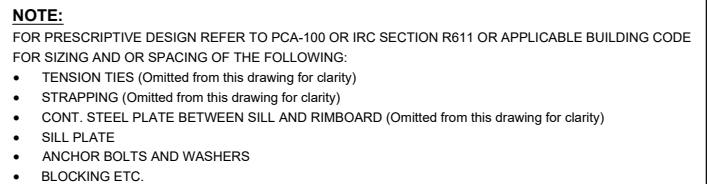


TIE NAME	CONCRETE CORE THICKNESS
BLUE TIE	= 4" [102mm]
YELLOW TIE	= 6" [152mm]
GREEN TIE	= 8" [203mm]
RED TIE	= 10" [254mm]
BROWN TIE	= 12" [305mm]
BLACK TIE + XT	= 14" [356mm]
ETC.	



Quad-Lock Building Systems
7398 - 132nd Street
Surrey, BC V3W 4M7
Canada

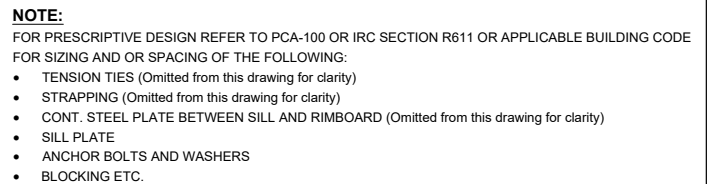
888.711.5625 - Toll Free
604.590.3111
604.590.8412 - fax
www.quadlock.com

IT IS THE RESPONSIBILITY OF THE USER TO COMPLY WITH ALL APPLICABLE REGULATIONS AND BUILDING CODE REQUIREMENTS CONCERNING THE USE OF THESE PRODUCTS.

IT IS FURTHER THE RESPONSIBILITY OF THE USER TO RESEARCH AND UNDERSTAND SAFE METHODS OF USE AND HANDLING OF THESE PRODUCTS.

DATE DRAWN:	2016-11-21	SCALE:	NOT TO SCALE
REVISION NO:	N/A	SHEET SIZE:	8.5" x 11" [216mm x 279mm]
REVISION DATE:	YYYY-MM-DD	APPROVED ON:	2016-11-29
DRAWN BY:	Z. PROSTRAN	APPROVED BY:	G. KUSTERMAN
			<div>DRAWING NO:</div> <div>QLU-201</div>

TIE NAME	CONCRETE CORE THICKNESS
BLUE TIE	= 4" [102mm]
YELLOW TIE	= 6" [152mm]
GREEN TIE	= 8" [203mm]
RED TIE	= 10" [254mm]
BROWN TIE	= 12" [305mm]
BLACK TIE + XT	= 14" [356mm]
ETC.	



Quad-Lock Building Systems
7398 - 132nd Street
Surrey, BC V3W 4M7
Canada

888.711.5625 - Toll Free
604.590.3111
604.590.8412 - fax
www.quadlock.com

IT IS THE RESPONSIBILITY OF THE USER TO COMPLY WITH ALL APPLICABLE REGULATIONS AND BUILDING CODE REQUIREMENTS CONCERNING THE USE OF THESE PRODUCTS.

IT IS FURTHER THE RESPONSIBILITY OF THE USER TO RESEARCH AND UNDERSTAND SAFE METHODS OF USE AND HANDLING OF THESE PRODUCTS.

DATE DRAWN:		2016-11-21		SCALE:		NOT TO SCALE	
REVISION NO:		N/A		SHEET SIZE:		8.5" x 11" [216mm x 279mm]	
REVISION DATE:		YYYY-MM-DD		APPROVED ON:		2016-11-29	
DRAWN BY:		Z. PROSTRAN		APPROVED BY:		G. KUSTERMANN	
						DRAWING NO:	
						QLU-202	

TIE NAME	CONCRETE CORE THICKNESS
BLUE TIE	= 4" [102mm]
YELLOW TIE	= 6" [152mm]
GREEN TIE	= 8" [203mm]
RED TIE	= 10" [254mm]
BROWN TIE	= 12" [305mm]
BLACK TIE + XT	= 14" [356mm]
ETC.	



- TENSION TIES (Omitted from this drawing for clarity)
- STRAPPING (Omitted from this drawing for clarity)
- CONT. STEEL PLATE BETWEEN SILL AND RIMBOARD (Omitted from this drawing for clarity)
- SILL PLATE
- ANCHOR BOLTS AND WASHERS
- BLOCKING ETC.

Quad-Lock Building Systems
7398 - 132nd Street
Surrey, BC V3W 4M7
Canada

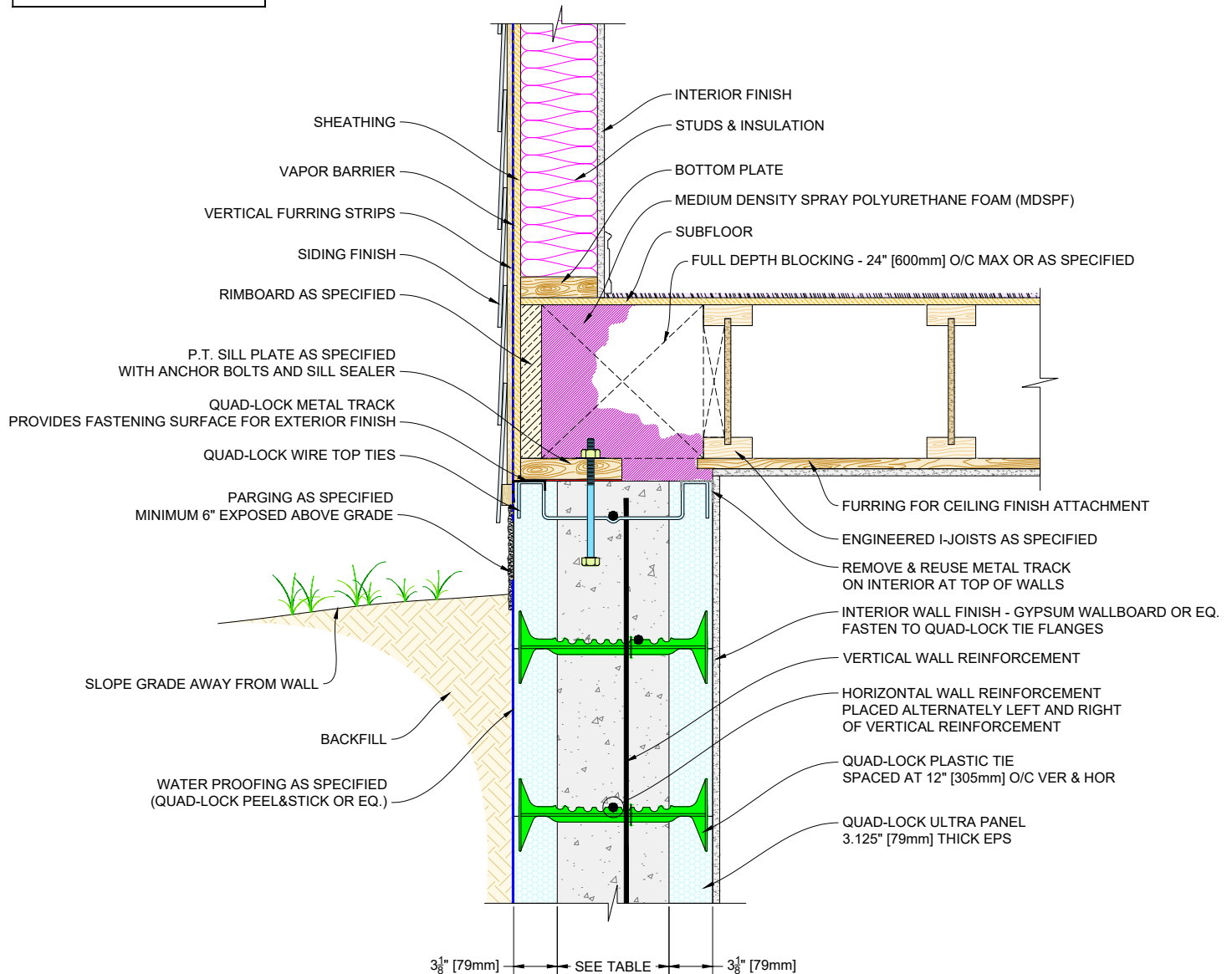
888.711.5625 - Toll Free
604.590.3111
604.590.8412 - fax
www.quadlock.com

IT IS FURTHER THE RESPONSIBILITY OF THE USER TO RESEARCH AND UNDERSTAND SAFE METHODS OF USE AND HANDLING OF THESE PRODUCTS.

DATE DRAWN: 2016-11-21		SCALE: NOT TO SCALE	
REVISION NO: N/A		SHEET SIZE: 8.5" x 11" [216mm x 279mm]	
REVISION DATE: YYYY-MM-DD		APPROVED ON: 2016-11-29	DRAWING NO: QLU-203
DRAWN BY: Z. PROSTRAN		APPROVED BY: G. KUSTERMANN	

QUAD-LOCK R-28 [U-0.21] WALL

TIE NAME	CONCRETE CORE THICKNESS
BLUE TIE = 4" [102mm]	
YELLOW TIE = 6" [152mm]	
GREEN TIE = 8" [203mm]	
RED TIE = 10" [254mm]	
BROWN TIE = 12" [305mm]	
BLACK TIE + XT = 14" [356mm]	
ETC.	



NOTE:

FOR PRESCRIPTIVE DESIGN REFER TO PCA-100 OR IRC SECTION R611 OR APPLICABLE BUILDING CODE FOR SIZING AND OR SPACING OF THE FOLLOWING:

- TENSION TIES (Omitted from this drawing for clarity)
- STRAPPING (Omitted from this drawing for clarity)
- CONT. STEEL PLATE BETWEEN SILL AND RIMBOARD (Omitted from this drawing for clarity)
- SILL PLATE
- ANCHOR BOLTS AND WASHERS
- BLOCKING ETC.

QUAD-LOCK®
Building Systems

Quad-Lock Building Systems
7398 - 132nd Street
Surrey, BC V3W 4M7
Canada
888.711.5625 - Toll Free
604.590.3111
604.590.8412 - fax
www.quadlock.com

IT IS THE RESPONSIBILITY OF THE USER TO COMPLY WITH ALL APPLICABLE REGULATIONS AND BUILDING CODE REQUIREMENTS CONCERNING THE USE OF THESE PRODUCTS.

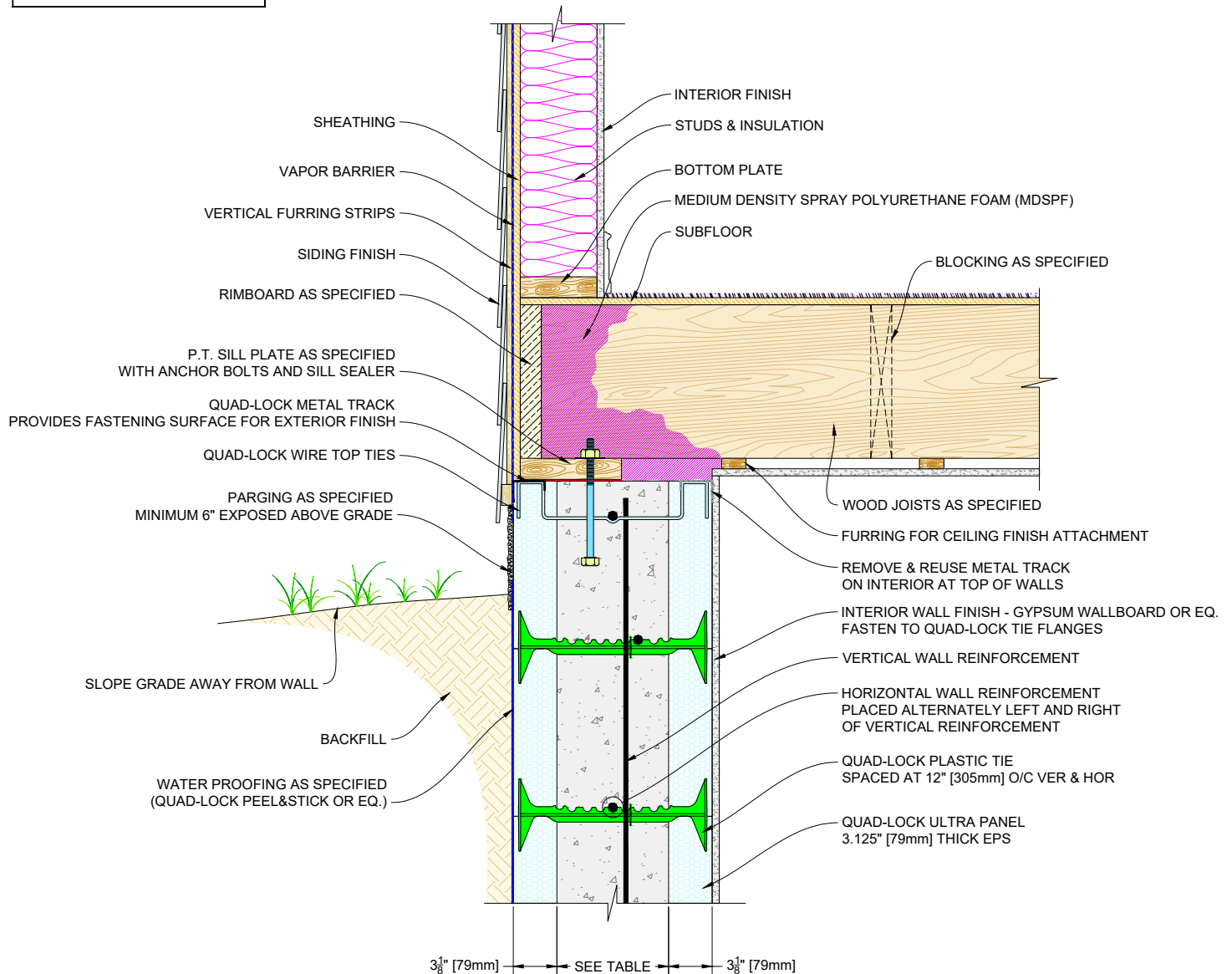
IT IS FURTHER THE RESPONSIBILITY OF THE USER TO RESEARCH AND UNDERSTAND SAFE METHODS OF USE AND HANDLING OF THESE PRODUCTS.

FLOOR ON TOP OF QUAD-LOCK WALL TJI'S PARALLEL TO WALL

DATE DRAWN:	2016-11-21	SCALE:	NOT TO SCALE
REVISION NO:	N/A	SHEET SIZE:	8.5" x 11" [216mm x 279mm]
REVISION DATE:	YYYY-MM-DD	APPROVED ON:	2016-11-29
DRAWN BY:	Z. PROSTRAN	APPROVED BY:	G. KUSTERMANN
			DRAWING NO: QLU-204

QUAD-LOCK R-28 [U-0.21] WALL

TIE NAME	CONCRETE CORE THICKNESS
BLUE TIE = 4" [102mm]	
YELLOW TIE = 6" [152mm]	
GREEN TIE = 8" [203mm]	
RED TIE = 10" [254mm]	
BROWN TIE = 12" [305mm]	
BLACK TIE + XT = 14" [356mm]	
ETC.	



NOTE:

FOR PRESCRIPTIVE DESIGN REFER TO PCA-100 OR IRC SECTION R611 OR APPLICABLE BUILDING CODE FOR SIZING AND OR SPACING OF THE FOLLOWING:

- TENSION TIES (Omitted from this drawing for clarity)
- STRAPPING (Omitted from this drawing for clarity)
- CONT. STEEL PLATE BETWEEN SILL AND RIMBOARD (Omitted from this drawing for clarity)
- SILL PLATE
- ANCHOR BOLTS AND WASHERS
- BLOCKING ETC.

QUAD-LOCK®
Building Systems

Quad-Lock Building Systems
7398 - 132nd Street
Surrey, BC V3W 4M7
Canada
888.711.5625 - Toll Free
604.590.3111
604.590.8412 - fax
www.quadlock.com

IT IS THE RESPONSIBILITY OF THE USER TO COMPLY WITH ALL APPLICABLE REGULATIONS AND BUILDING CODE REQUIREMENTS CONCERNING THE USE OF THESE PRODUCTS.

IT IS FURTHER THE RESPONSIBILITY OF THE USER TO RESEARCH AND UNDERSTAND SAFE METHODS OF USE AND HANDLING OF THESE PRODUCTS.

FLOOR ON TOP OF QUAD-LOCK WALL WOOD JOISTS PERPENDICULAR TO WALL

DATE DRAWN:	2016-11-21	SCALE:	NOT TO SCALE
REVISION NO:	N/A	SHEET SIZE:	8.5" x 11" [216mm x 279mm]
REVISION DATE:	YYYY-MM-DD	APPROVED ON:	2016-11-29
DRAWN BY:	Z. PROSTRAN	APPROVED BY:	G. KUSTERMANN
			DRAWING NO: QLU-205

TIE NAME	CONCRETE CORE THICKNESS
BLUE TIE	= 4" [102mm]
YELLOW TIE	= 6" [152mm]
GREEN TIE	= 8" [203mm]
RED TIE	= 10" [254mm]
BROWN TIE	= 12" [305mm]
BLACK TIE + XT	= 14" [356mm]
ETC.	



FOR PRESCRIPTIVE DESIGN REFER TO PCA-100 OR IRC SECTION R611 OR APPLICABLE BUILDING CODE
FOR SIZING AND OR SPACING OF THE FOLLOWING:

- TENSION TIES (Omitted from this drawing for clarity)
- STRAPPING (Omitted from this drawing for clarity)
- CONT. STEEL PLATE BETWEEN SILL AND RIMBOARD (Omitted from this drawing for clarity)
- SILL PLATE
- ANCHOR BOLTS AND WASHERS
- BLOCKING ETC.

QUAD-LOCK®
Building Systems

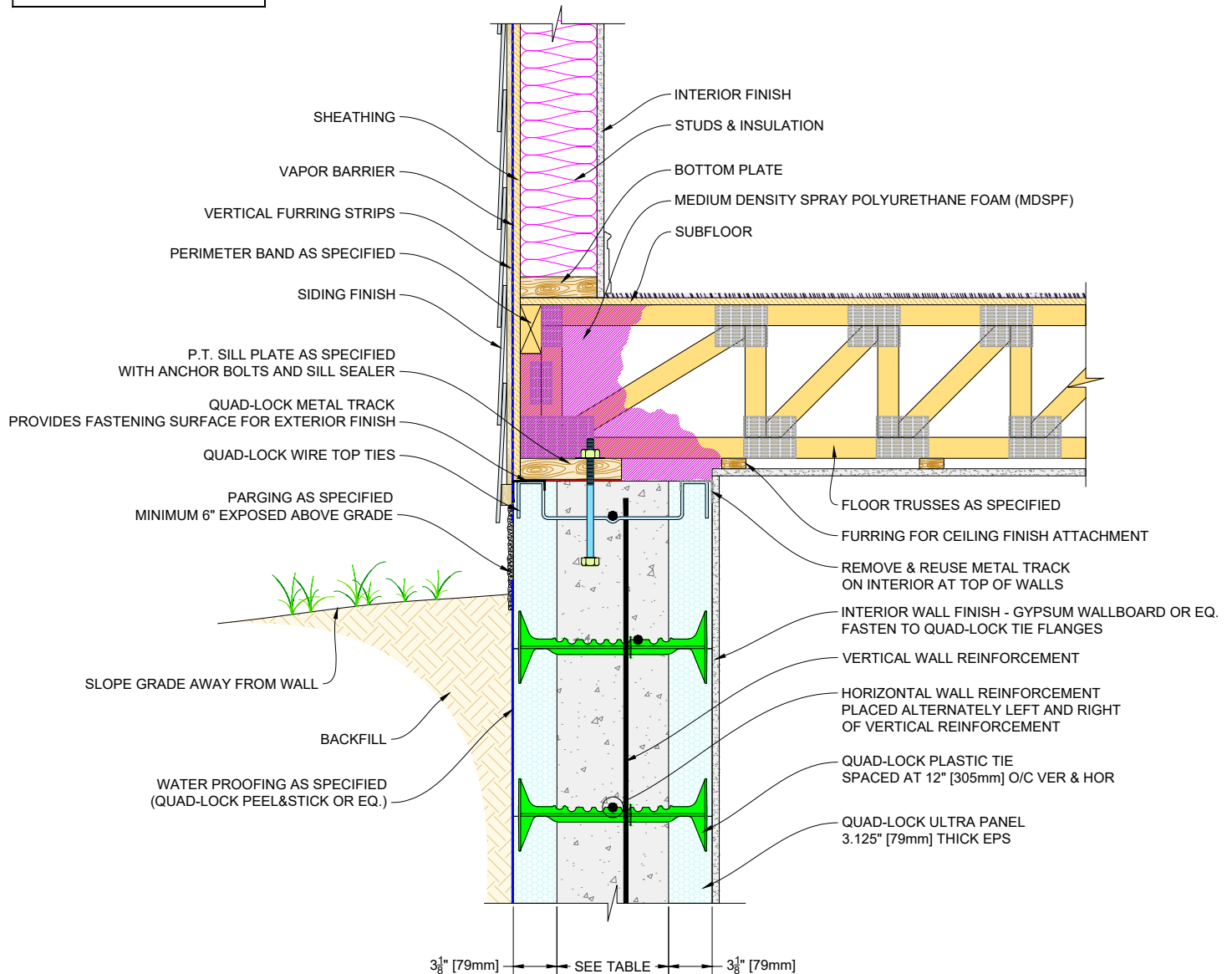
Quad-Lock Building Systems
7398 - 132nd Street
Surrey, BC V3W 4M7
Canada

888.711.5625 - Toll Free
604.590.3111
604.590.8412 - fax
www.quadlock.com

DATE DRAWN: 2016-11-21		SCALE: NOT TO SCALE	
REVISION NO: N/A		SHEET SIZE: 8.5" x 11" [216mm x 279mm]	
REVISION DATE: YYYY-MM-DD		APPROVED ON: 2016-11-29	DRAWING NO: QLU-206
DRAWN BY: Z. PROSTRAN		APPROVED BY: G. KUSTERMANN	

QUAD-LOCK R-28 [U-0.21] WALL

TIE NAME	CONCRETE CORE THICKNESS
BLUE TIE = 4" [102mm]	
YELLOW TIE = 6" [152mm]	
GREEN TIE = 8" [203mm]	
RED TIE = 10" [254mm]	
BROWN TIE = 12" [305mm]	
BLACK TIE + XT = 14" [356mm]	
ETC.	



NOTE:

FOR PRESCRIPTIVE DESIGN REFER TO PCA-100 OR IRC SECTION R611 OR APPLICABLE BUILDING CODE FOR SIZING AND OR SPACING OF THE FOLLOWING:

- TENSION TIES (Omitted from this drawing for clarity)
- STRAPPING (Omitted from this drawing for clarity)
- CONT. STEEL PLATE BETWEEN SILL AND RIMBOARD (Omitted from this drawing for clarity)
- SILL PLATE
- ANCHOR BOLTS AND WASHERS
- BLOCKING ETC.

QUAD-LOCK®
Building Systems

Quad-Lock Building Systems
7398 - 132nd Street
Surrey, BC V3W 4M7
Canada
888.711.5625 - Toll Free
604.590.3111
604.590.8412 - fax
www.quadlock.com

IT IS THE RESPONSIBILITY OF THE USER TO COMPLY WITH ALL APPLICABLE REGULATIONS AND BUILDING CODE REQUIREMENTS CONCERNING THE USE OF THESE PRODUCTS.

IT IS FURTHER THE RESPONSIBILITY OF THE USER TO RESEARCH AND UNDERSTAND SAFE METHODS OF USE AND HANDLING OF THESE PRODUCTS.

FLOOR ON TOP OF QUAD-LOCK WALL WOOD TRUSSES PERPENDICULAR TO WALL

DATE DRAWN:	2016-11-21	SCALE:	NOT TO SCALE
REVISION NO:	N/A	SHEET SIZE:	8.5" x 11" [216mm x 279mm]
REVISION DATE:	YYYY-MM-DD	APPROVED ON:	2016-11-29
DRAWN BY:	Z. PROSTRAN	APPROVED BY:	G. KUSTERMANN
			DRAWING NO: QLU-207

TIE NAME	CONCRETE CORE THICKNESS
BLUE TIE	= 4" [102mm]
YELLOW TIE	= 6" [152mm]
GREEN TIE	= 8" [203mm]
RED TIE	= 10" [254mm]
BROWN TIE	= 12" [305mm]
BLACK TIE + XT	= 14" [356mm]
ETC.	



- TENSION TIES (Omitted from this drawing for clarity)
- STRAPPING (Omitted from this drawing for clarity)
- CONT. STEEL PLATE BETWEEN SILL AND RIMBOARD (Omitted from this drawing for clarity)
- SILL PLATE
- ANCHOR BOLTS AND WASHERS
- BLOCKING ETC.

QUAD-LOCK®
Building Systems

Quad-Lock Building Systems
7398 - 132nd Street
Surrey, BC V3W 4M7
Canada

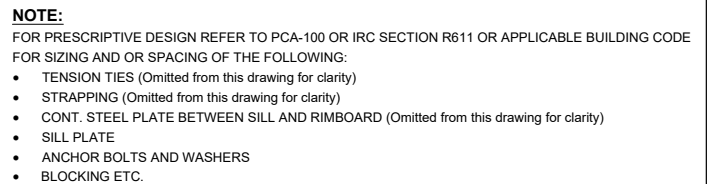
888.711.5625 - Toll Free
604.590.3111
604.590.8412 - fax
www.quadlock.com

DATE DRAWN:		2016-11-21		SCALE:		NOT TO SCALE	
REVISION NO:		N/A		SHEET SIZE:		8.5" x 11" [216mm x 279mm]	
REVISION DATE:		YYYY-MM-DD		APPROVED ON:		2016-11-29	
DRAWN BY:		Z. PROSTRAN		APPROVED BY:		G. KUSTERMANN	
						DRAWING NO:	
						QLU-208	

IT IS THE RESPONSIBILITY OF THE USER TO COMPLY WITH ALL APPLICABLE REGULATIONS AND BUILDING CODE REQUIREMENTS CONCERNING THE USE OF THESE PRODUCTS.

IT IS FURTHER THE RESPONSIBILITY OF THE USER TO RESEARCH AND UNDERSTAND SAFE METHODS OF USE AND HANDLING OF THESE PRODUCTS.

TIE NAME	CONCRETE CORE THICKNESS
BLUE TIE	= 4" [102mm]
YELLOW TIE	= 6" [152mm]
GREEN TIE	= 8" [203mm]
RED TIE	= 10" [254mm]
BROWN TIE	= 12" [305mm]
BLACK TIE + XT	= 14" [356mm]
ETC.	



Quad-Lock Building Systems
7398 - 132nd Street
Surrey, BC V3W 4M7
Canada

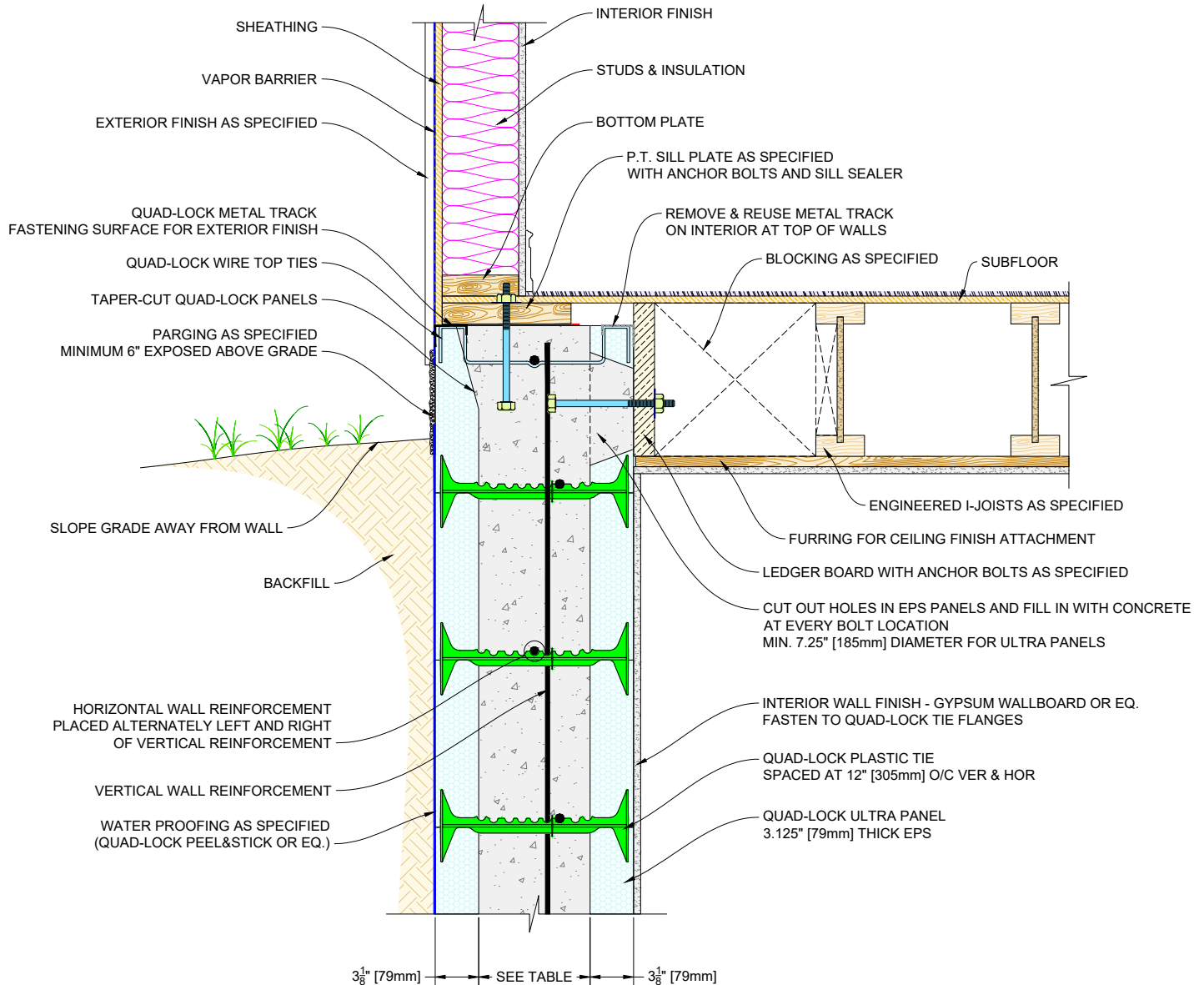
888.711.5625 - Toll Free
604.590.3111
604.590.8412 - fax
www.quadlock.com

FLOOR AGAINST TOP OF QUAD-LOCK WALL
TJ'S PERPENDICULAR TO WALL

DATE DRAWN: 2016-11-21		SCALE: NOT TO SCALE	
REVISION NO: N/A		SHEET SIZE: 8.5" x 11" [216mm x 279mm]	
REVISION DATE: YYYY-MM-DD		APPROVED ON: 2016-11-29	
DRAWN BY: Z. PROSTRAN		APPROVED BY: G. KUSTERMANN	
		DRAWING NO: QLU-209	

QUAD-LOCK R-28 [U-0.21] WALL

TIE NAME	CONCRETE CORE THICKNESS
BLUE TIE = 4" [102mm]	
YELLOW TIE = 6" [152mm]	
GREEN TIE = 8" [203mm]	
RED TIE = 10" [254mm]	
BROWN TIE = 12" [305mm]	
BLACK TIE + XT = 14" [356mm]	
ETC.	



NOTE:

FOR PRESCRIPTIVE DESIGN REFER TO PCA-100 OR IRC SECTION R611 OR APPLICABLE BUILDING CODE FOR SIZING AND OR SPACING OF THE FOLLOWING:

- TENSION TIES (Omitted from this drawing for clarity)
- STRAPPING (Omitted from this drawing for clarity)
- CONT. STEEL PLATE BETWEEN SILL AND RIMBOARD (Omitted from this drawing for clarity)
- SILL PLATE
- ANCHOR BOLTS AND WASHERS
- BLOCKING ETC.

QUAD-LOCK®
Building Systems

Quad-Lock Building Systems
7398 - 132nd Street
Surrey, BC V3W 4M7
Canada
888.711.5625 - Toll Free
604.590.3111
604.590.8412 - fax
www.quadlock.com

IT IS THE RESPONSIBILITY OF THE USER TO COMPLY WITH ALL APPLICABLE REGULATIONS AND BUILDING CODE REQUIREMENTS CONCERNING THE USE OF THESE PRODUCTS.

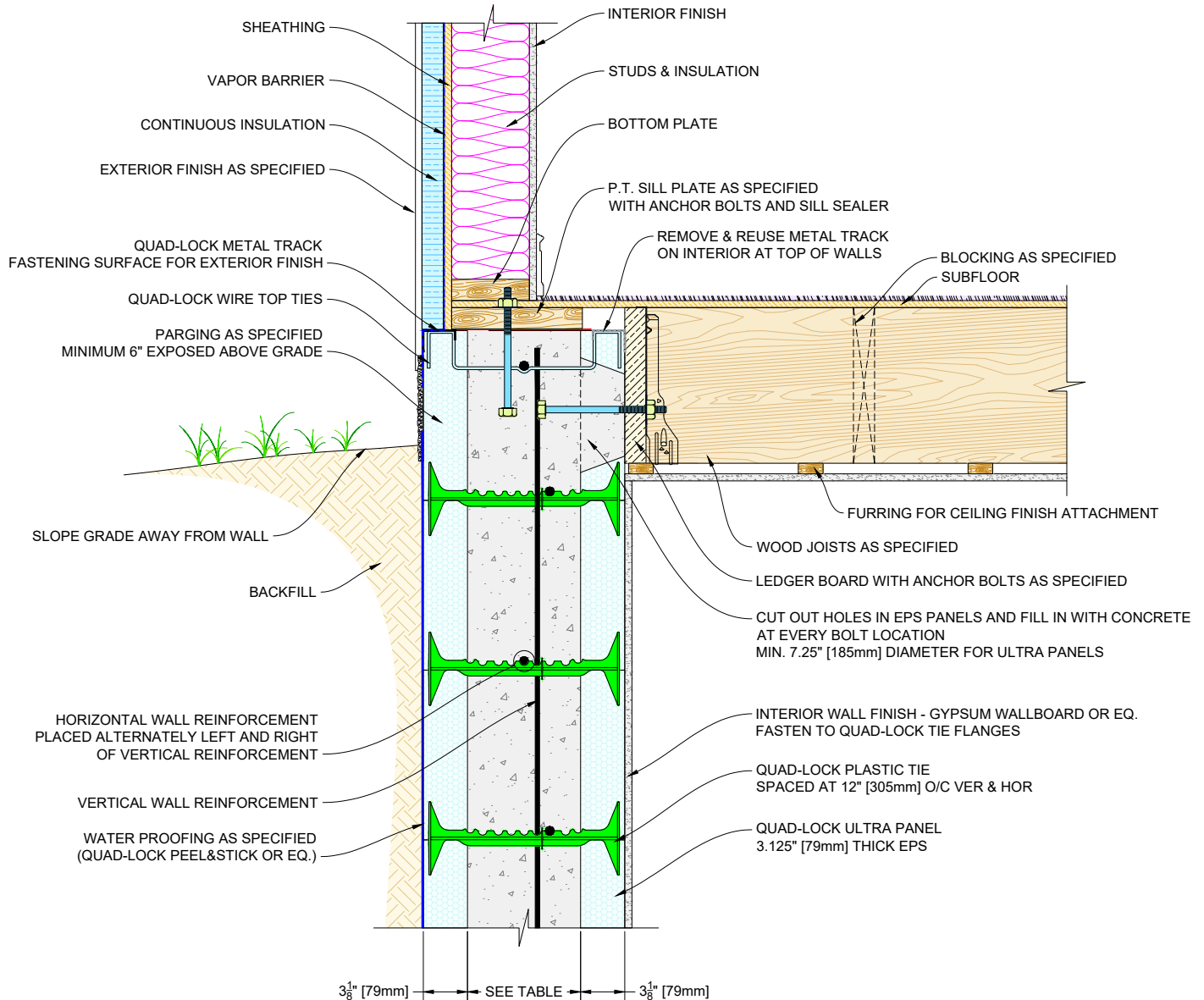
IT IS FURTHER THE RESPONSIBILITY OF THE USER TO RESEARCH AND UNDERSTAND SAFE METHODS OF USE AND HANDLING OF THESE PRODUCTS.

FLOOR AGAINST TOP OF QUAD-LOCK WALL TJI'S PARALLEL TO WALL

DATE DRAWN:	2016-11-21	SCALE:	NOT TO SCALE
REVISION NO:	N/A	SHEET SIZE:	8.5" x 11" [216mm x 279mm]
REVISION DATE:	YYYY-MM-DD	APPROVED ON:	2016-11-29
DRAWN BY:	Z. PROSTRAN	APPROVED BY:	G. KUSTERMANN
			QLU-210

QUAD-LOCK R-28 [U-0.21] WALL

TIE NAME	CONCRETE CORE THICKNESS
BLUE TIE = 4" [102mm]	
YELLOW TIE = 6" [152mm]	
GREEN TIE = 8" [203mm]	
RED TIE = 10" [254mm]	
BROWN TIE = 12" [305mm]	
BLACK TIE + XT = 14" [356mm]	
ETC.	



NOTE:

FOR PRESCRIPTIVE DESIGN REFER TO PCA-100 OR IRC SECTION R611 OR APPLICABLE BUILDING CODE FOR SIZING AND OR SPACING OF THE FOLLOWING:

- TENSION TIES (Omitted from this drawing for clarity)
- STRAPPING (Omitted from this drawing for clarity)
- CONT. STEEL PLATE BETWEEN SILL AND RIMBOARD (Omitted from this drawing for clarity)
- SILL PLATE
- ANCHOR BOLTS AND WASHERS
- BLOCKING ETC.

QUAD-LOCK®
Building Systems

Quad-Lock Building Systems
7398 - 132nd Street
Surrey, BC V3W 4M7
Canada
888.711.5625 - Toll Free
604.590.3111
604.590.8412 - fax
www.quadlock.com

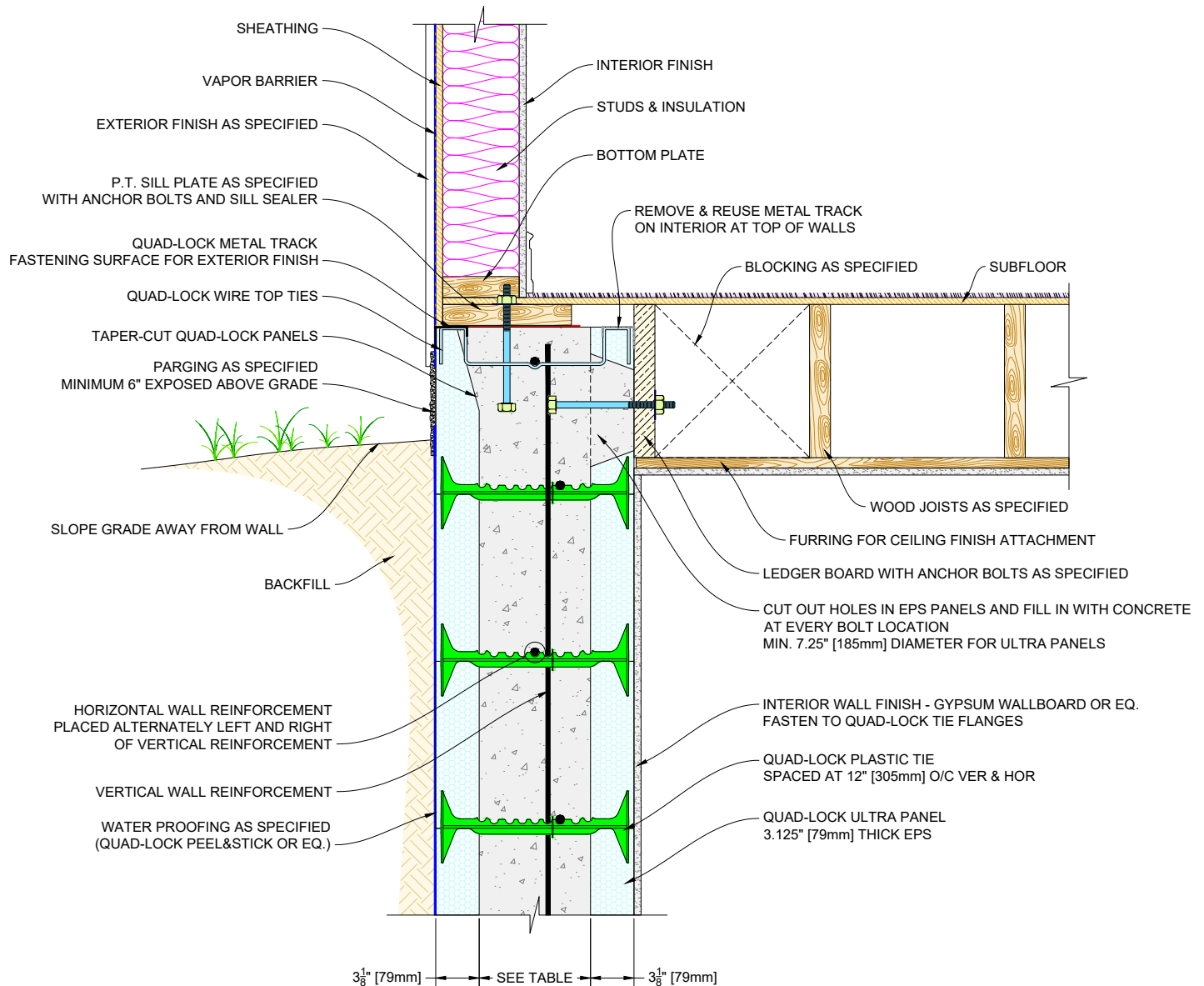
IT IS THE RESPONSIBILITY OF THE USER TO COMPLY WITH ALL APPLICABLE REGULATIONS AND BUILDING CODE REQUIREMENTS CONCERNING THE USE OF THESE PRODUCTS.

IT IS FURTHER THE RESPONSIBILITY OF THE USER TO RESEARCH AND UNDERSTAND SAFE METHODS OF USE AND HANDLING OF THESE PRODUCTS.

FLOOR AGAINST TOP OF QUAD-LOCK WALL WOOD JOISTS PERPENDICULAR TO WALL

DATE DRAWN:	2016-11-21	SCALE:	NOT TO SCALE
REVISION NO:	N/A	SHEET SIZE:	8.5" x 11" [216mm x 279mm]
REVISION DATE:	YYYY-MM-DD	APPROVED ON:	2016-11-29
DRAWN BY:	Z. PROSTRAN	APPROVED BY:	G. KUSTERMANN
			DRAWING NO: QLU-211

TIE NAME	CONCRETE CORE THICKNESS
BLUE TIE	= 4" [102mm]
YELLOW TIE	= 6" [152mm]
GREEN TIE	= 8" [203mm]
RED TIE	= 10" [254mm]
BROWN TIE	= 12" [305mm]
BLACK TIE + XT	= 14" [356mm]
ETC.	



FOR PRESCRIPTIVE DESIGN REFER TO PCA-100 OR IRC SECTION R611 OR APPLICABLE BUILDING CODE
FOR SIZING AND OR SPACING OF THE FOLLOWING:

- TENSION TIES (Omitted from this drawing for clarity)
- STRAPPING (Omitted from this drawing for clarity)
- CONT. STEEL PLATE BETWEEN SILL AND RIMBOARD (Omitted from this drawing for clarity)
- SILL PLATE
- ANCHOR BOLTS AND WASHERS
- BLOCKING ETC.

QUAD-LOCK®
Building Systems

Quad-Lock Building Systems
7398 - 132nd Street
Surrey, BC V3W 4M7
Canada

888.711.5625 - Toll Free
604.590.3111
604.590.8412 - fax
www.quadlock.com

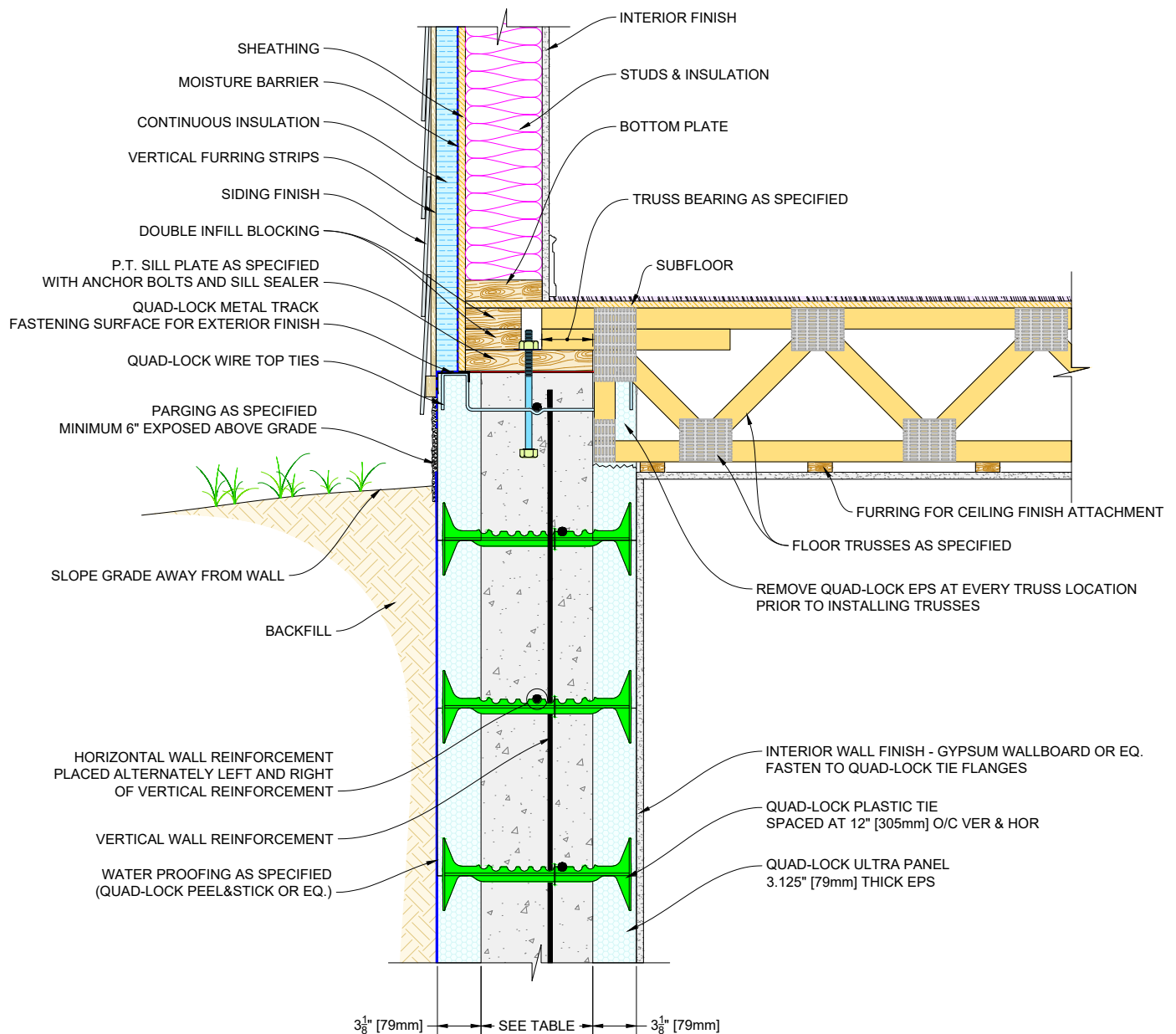
IT IS THE RESPONSIBILITY OF THE USER TO COMPLY WITH ALL APPLICABLE REGULATIONS AND BUILDING CODE REQUIREMENTS CONCERNING THE USE OF THESE PRODUCTS.

IT IS FURTHER THE RESPONSIBILITY OF THE USER TO RESEARCH AND UNDERSTAND SAFE METHODS OF USE AND HANDLING OF THESE PRODUCTS.

FLOOR AGAINST TOP OF QUAD-LOCK WALL
WOOD JOISTS PARALLEL TO WALL

DATE DRAWN:		2016-11-21		SCALE:		NOT TO SCALE	
REVISION NO:		N/A		SHEET SIZE:		8.5" x 11" [216mm x 279mm]	
REVISION DATE:		YYYY-MM-DD		APPROVED ON:		2016-11-29	
DRAWN BY:		Z. PROSTRAN		APPROVED BY:		G. KUSTERMAN	
						DRAWING NO:	
						QLU-212	

TIE NAME	CONCRETE CORE THICKNESS
BLUE TIE	= 4" [102mm]
YELLOW TIE	= 6" [152mm]
GREEN TIE	= 8" [203mm]
RED TIE	= 10" [254mm]
BROWN TIE	= 12" [305mm]
BLACK TIE + XT	= 14" [356mm]
ETC.	



FOR PRESCRIPTIVE DESIGN REFER TO PCA-100 OR IRC SECTION R611 OR APPLICABLE BUILDING CODE
FOR SIZING AND OR SPACING OF THE FOLLOWING:

- QUAD-LOCK®**
Building Systems

Quad-Lock Building Systems
7398 - 132nd Street
Surrey, BC V3W 4M7
Canada

888.711.5625 - Toll Free
604.590.3111
604.590.8412 - fax
www.quadlock.com

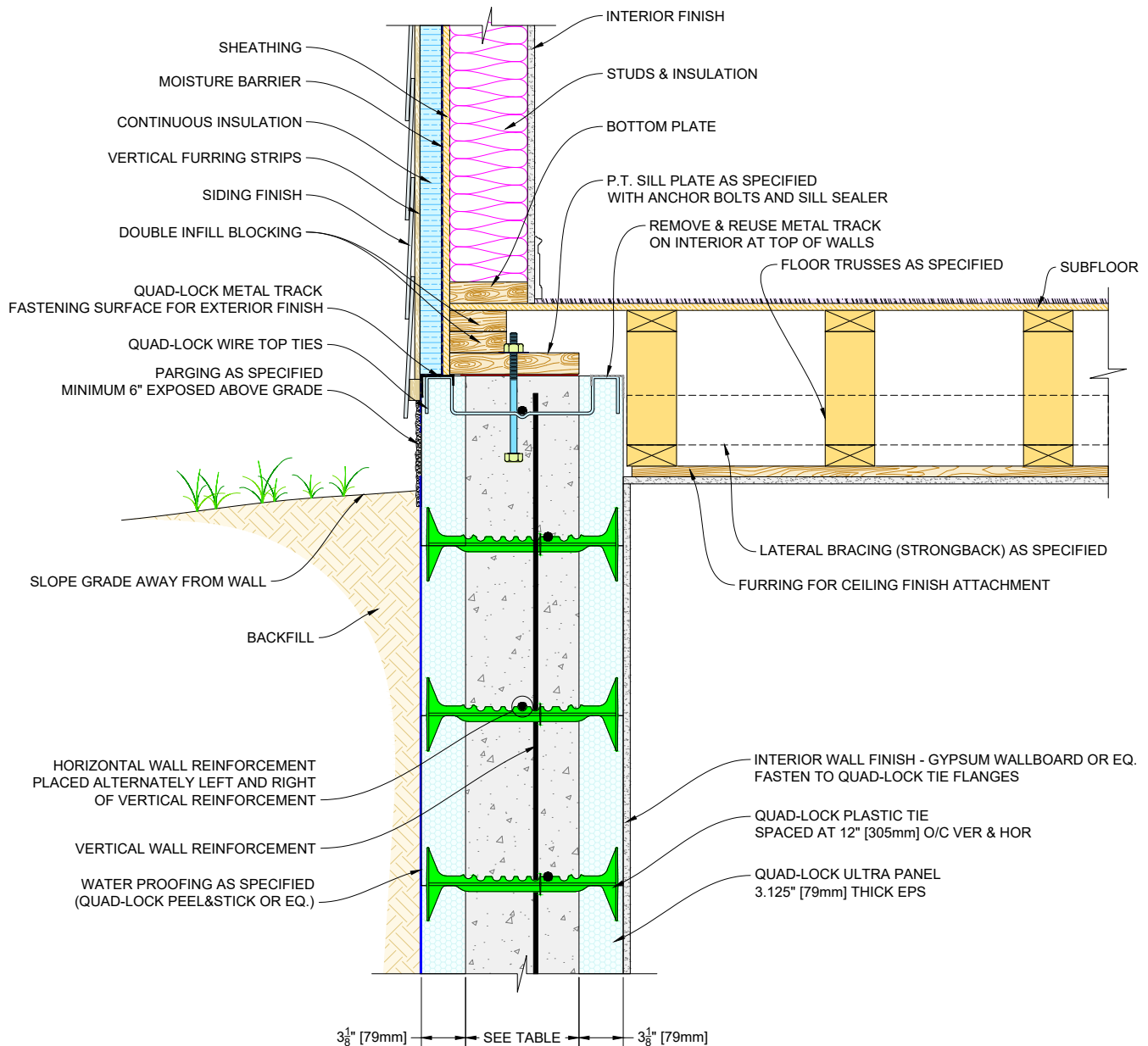
IT IS THE RESPONSIBILITY OF THE USER TO COMPLY WITH ALL APPLICABLE REGULATIONS AND BUILDING CODE REQUIREMENTS CONCERNING THE USE OF THESE PRODUCTS.

IT IS FURTHER THE RESPONSIBILITY OF THE USER TO RESEARCH AND UNDERSTAND SAFE METHODS OF USE AND HANDLING OF THESE PRODUCTS.

DATE DRAWN: 2016-11-21		SCALE: NOT TO SCALE	
REVISION NO: N/A		SHEET SIZE: 8.5" x 11" [216mm x 279mm]	
REVISION DATE: YYYY-MM-DD		APPROVED ON: 2016-11-29	DRAWING NO: QLU-213
DRAWN BY: Z. PROSTRAN		APPROVED BY: G. KUSTERMANN	

QUAD-LOCK R-28 [U-0.21] WALL

TIE NAME	CONCRETE CORE THICKNESS
BLUE TIE = 4" [102mm]	
YELLOW TIE = 6" [152mm]	
GREEN TIE = 8" [203mm]	
RED TIE = 10" [254mm]	
BROWN TIE = 12" [305mm]	
BLACK TIE + XT = 14" [356mm]	
ETC.	



NOTE:

FOR PRESCRIPTIVE DESIGN REFER TO PCA-100 OR IRC SECTION R611 OR APPLICABLE BUILDING CODE FOR SIZING AND OR SPACING OF THE FOLLOWING:

- TENSION TIES (Omitted from this drawing for clarity)
- STRAPPING (Omitted from this drawing for clarity)
- CONT. STEEL PLATE BETWEEN SILL AND RIMBOARD (Omitted from this drawing for clarity)
- SILL PLATE
- ANCHOR BOLTS AND WASHERS
- BLOCKING ETC.

QUAD-LOCK®
Building Systems

Quad-Lock Building Systems
7398 - 132nd Street
Surrey, BC V3W 4M7
Canada
888.711.5625 - Toll Free
604.590.3111
604.590.8412 - fax
www.quadlock.com

IT IS THE RESPONSIBILITY OF THE USER TO COMPLY WITH ALL APPLICABLE REGULATIONS AND BUILDING CODE REQUIREMENTS CONCERNING THE USE OF THESE PRODUCTS.

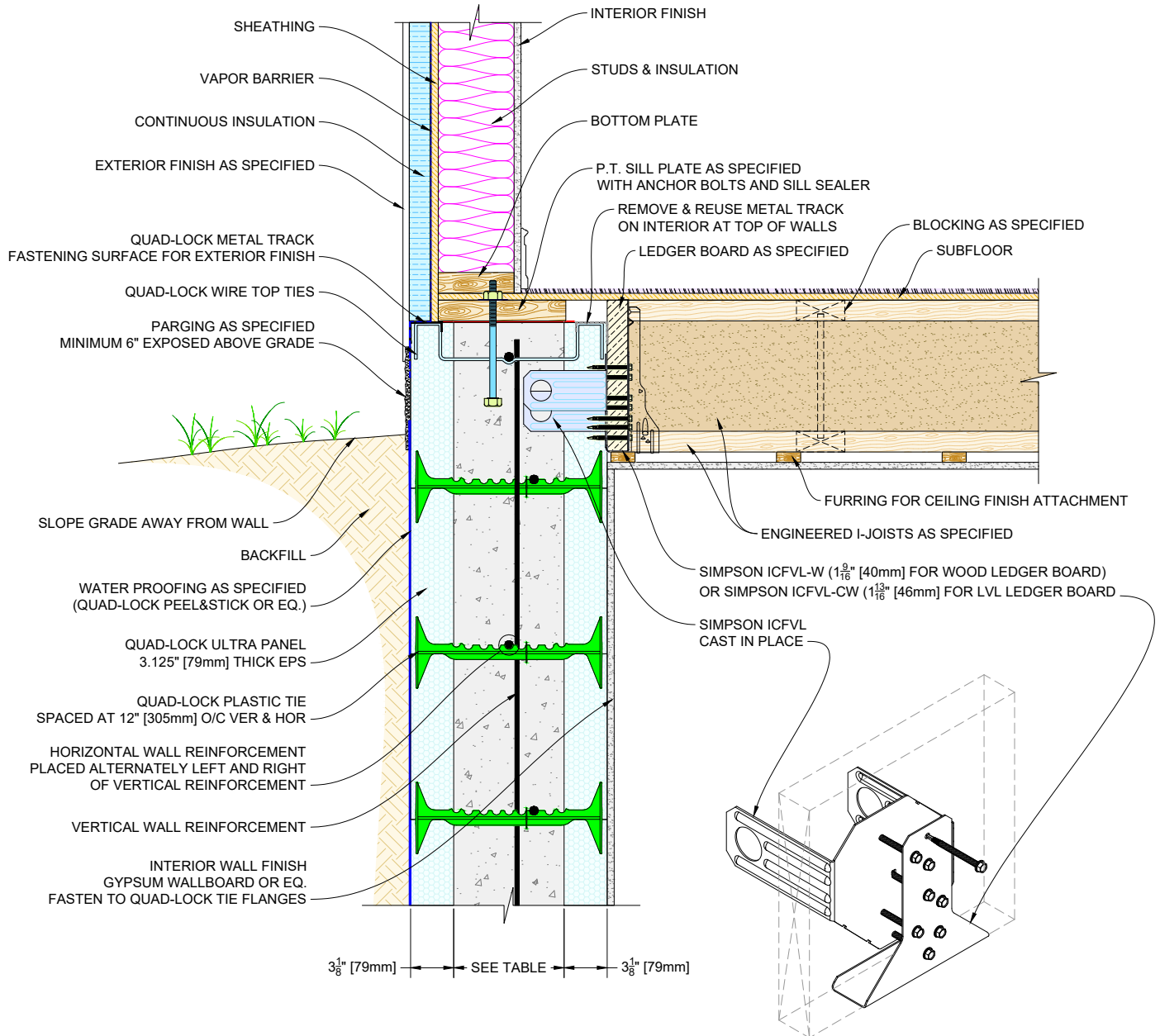
IT IS FURTHER THE RESPONSIBILITY OF THE USER TO RESEARCH AND UNDERSTAND SAFE METHODS OF USE AND HANDLING OF THESE PRODUCTS.

FLOOR AGAINST TOP OF QUAD-LOCK WALL WOOD TRUSSES PARALLEL TO WALL

DATE DRAWN:	2016-11-21	SCALE:	NOT TO SCALE
REVISION NO:	N/A	SHEET SIZE:	8.5" x 11" [216mm x 279mm]
REVISION DATE:	YYYY-MM-DD	APPROVED ON:	2016-11-29
DRAWN BY:	Z. PROSTRAN	APPROVED BY:	G. KUSTERMANN
			DRAWING NO: QLU-214

QUAD-LOCK R-28 [U-0.21] WALL

TIE NAME	CONCRETE CORE THICKNESS
BLUE TIE = 4" [102mm]	
YELLOW TIE = 6" [152mm]	
GREEN TIE = 8" [203mm]	
RED TIE = 10" [254mm]	
BROWN TIE = 12" [305mm]	
BLACK TIE + XT = 14" [356mm]	
ETC.	



QUAD-LOCK®
Building Systems

Quad-Lock Building Systems
7398 - 132nd Street
Surrey, BC V3W 4M7
Canada
888.711.5625 - Toll Free
604.590.3111
604.590.8412 - fax
www.quadlock.com

IT IS THE RESPONSIBILITY OF THE USER TO COMPLY WITH ALL APPLICABLE REGULATIONS AND BUILDING CODE REQUIREMENTS CONCERNING THE USE OF THESE PRODUCTS.

IT IS FURTHER THE RESPONSIBILITY OF THE USER TO RESEARCH AND UNDERSTAND SAFE METHODS OF USE AND HANDLING OF THESE PRODUCTS.

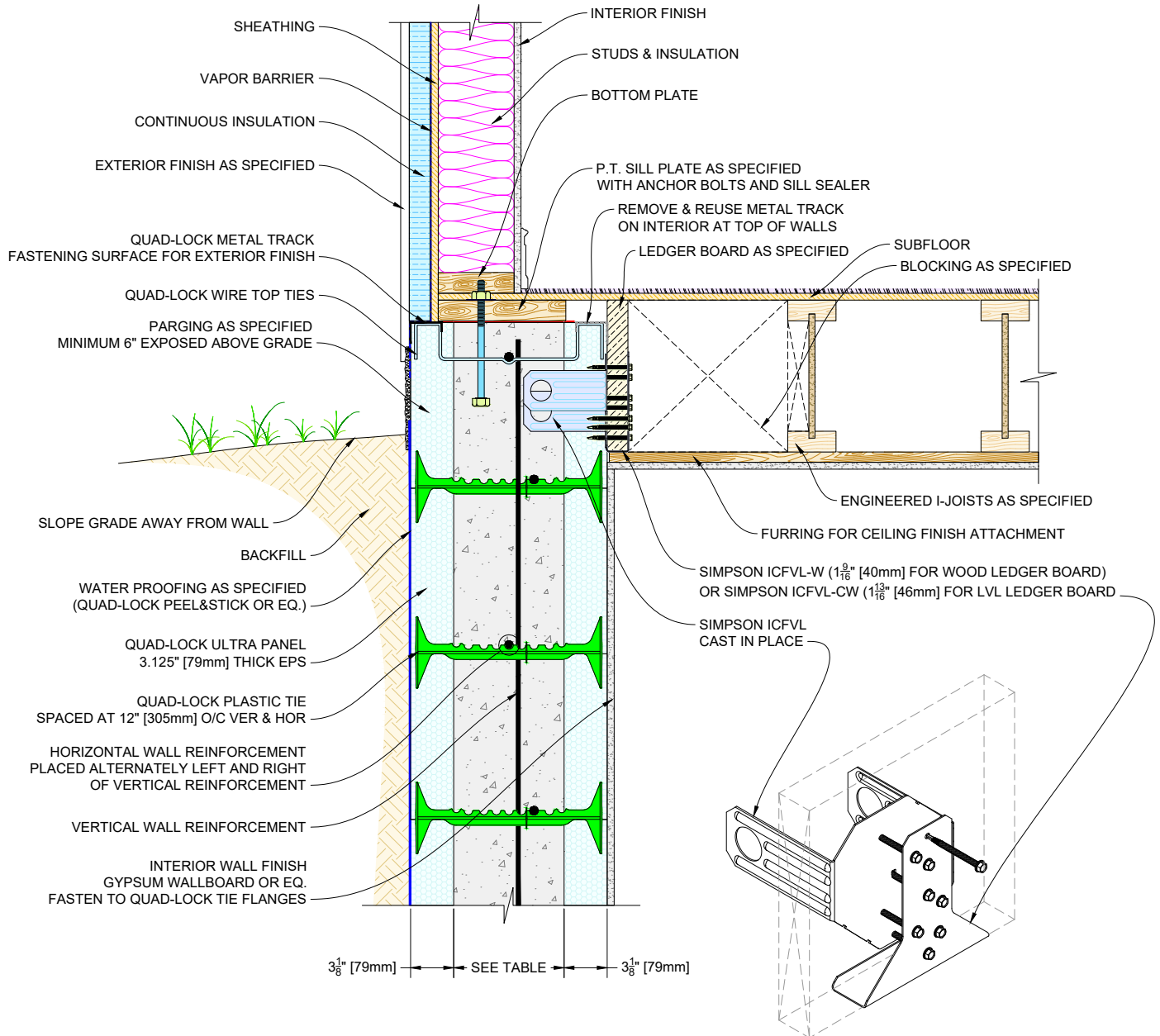
FLOOR AGAINST TOP OF QUAD-LOCK WALL

TJI'S PERPENDICULAR TO WALL W/ SIMPSON LEDGER CONNECTOR

DATE DRAWN:	2016-11-21	SCALE:	NOT TO SCALE
REVISION NO:	N/A	SHEET SIZE:	8.5" x 11" [216mm x 279mm]
REVISION DATE:	YYYY-MM-DD	APPROVED ON:	2016-11-29
DRAWN BY:	Z. PROSTRAN	APPROVED BY:	G. KUSTERMANN
			DRAWING NO: QLU-215

QUAD-LOCK R-28 [U-0.21] WALL

TIE NAME	CONCRETE CORE THICKNESS
BLUE TIE = 4" [102mm]	
YELLOW TIE = 6" [152mm]	
GREEN TIE = 8" [203mm]	
RED TIE = 10" [254mm]	
BROWN TIE = 12" [305mm]	
BLACK TIE + XT = 14" [356mm]	
ETC.	



QUAD-LOCK®
Building Systems

Quad-LOCK Building Systems
7398 - 132nd Street
Surrey, BC V3W 4M7
Canada
888.711.5625 - Toll Free
604.590.3111
604.590.8412 - fax
www.quadlock.com

IT IS THE RESPONSIBILITY OF THE USER TO COMPLY WITH ALL APPLICABLE REGULATIONS AND BUILDING CODE REQUIREMENTS CONCERNING THE USE OF THESE PRODUCTS.

IT IS FURTHER THE RESPONSIBILITY OF THE USER TO RESEARCH AND UNDERSTAND SAFE METHODS OF USE AND HANDLING OF THESE PRODUCTS.

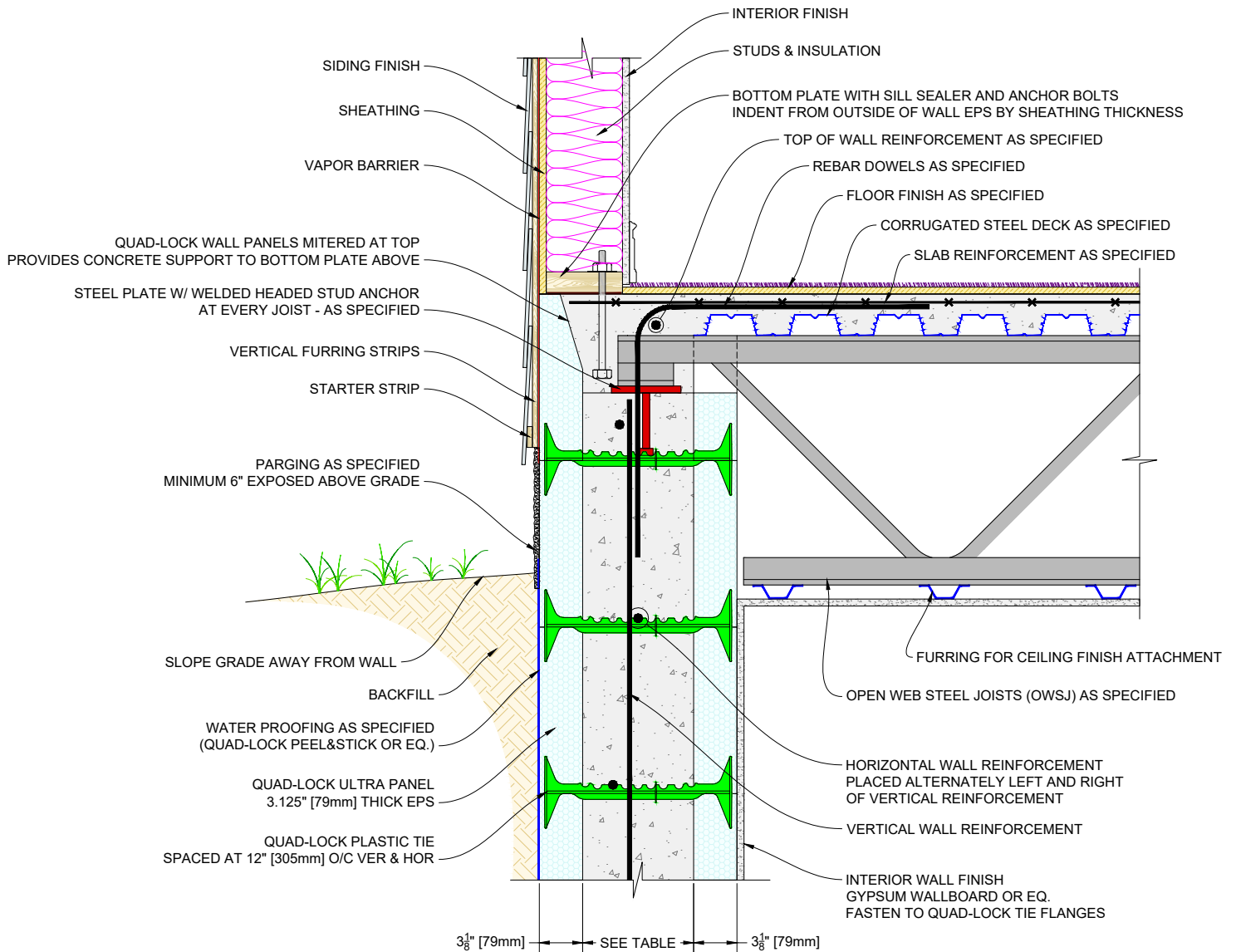
FLOOR AGAINST TOP OF QUAD-LOCK WALL

TJI'S PARALLEL TO WALL W/ SIMPSON LEDGER CONNECTOR

DATE DRAWN:	2016-11-21	SCALE:	NOT TO SCALE
REVISION NO:	N/A	SHEET SIZE:	8.5" x 11" [216mm x 279mm]
REVISION DATE:	YYYY-MM-DD	APPROVED ON:	2016-11-29
DRAWN BY:	Z. PROSTRAN	APPROVED BY:	G. KUSTERMANN
			DRAWING NO: QLU-216

QUAD-LOCK R-28 [U-0.21] WALL

TIE NAME	CONCRETE CORE THICKNESS
BLUE TIE = 4" [102mm]	
YELLOW TIE = 6" [152mm]	
GREEN TIE = 8" [203mm]	
RED TIE = 10" [254mm]	
BROWN TIE = 12" [305mm]	
BLACK TIE + XT = 14" [356mm]	
ETC.	



QUAD-LOCK®
Building Systems

Quad-Lock Building Systems
7398 - 132nd Street
Surrey, BC V3W 4M7
Canada
888.711.5625 - Toll Free
604.590.3111
604.590.8412 - fax
www.quadlock.com

IT IS THE RESPONSIBILITY OF THE USER TO COMPLY WITH ALL APPLICABLE REGULATIONS AND BUILDING CODE REQUIREMENTS CONCERNING THE USE OF THESE PRODUCTS.

IT IS FURTHER THE RESPONSIBILITY OF THE USER TO RESEARCH AND UNDERSTAND SAFE METHODS OF USE AND HANDLING OF THESE PRODUCTS.

OWSJ FLOOR ON TOP OF QUAD-LOCK WALL

JOISTS PERPENDICULAR TO WALL

DATE DRAWN:	2016-11-21	SCALE:	NOT TO SCALE
REVISION NO:	N/A	SHEET SIZE:	8.5" x 11" [216mm x 279mm]
REVISION DATE:	YYYY-MM-DD	APPROVED ON:	2016-11-29
DRAWN BY:	Z. PROSTRAN	APPROVED BY:	G. KUSTERMANN
			DRAWING NO: QLU-217