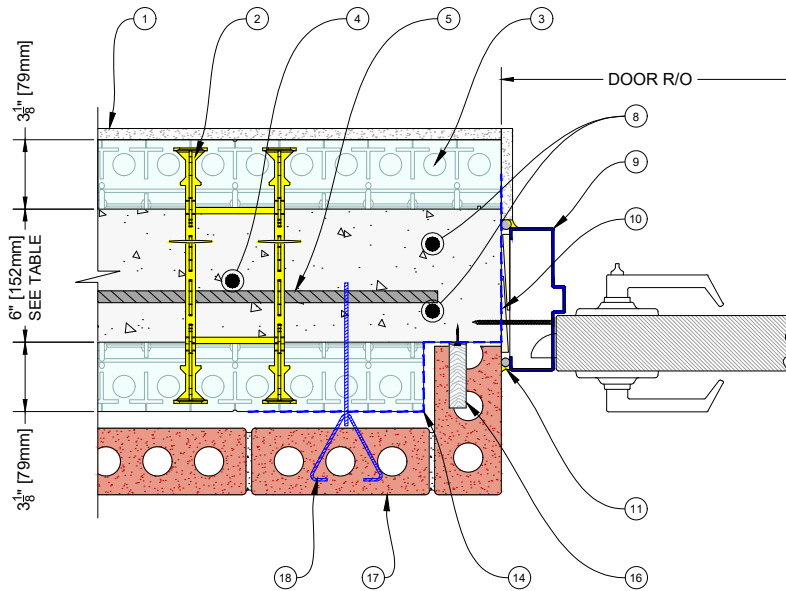
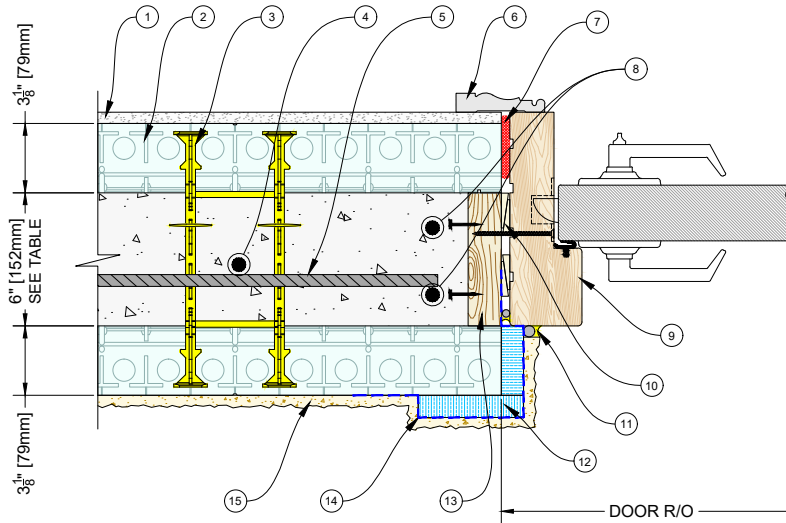


QUAD-LOCK R-28 [U-0.21] WALL

TIE NAME	CONCRETE CORE THICKNESS
BLUE TIE = 4" [102mm]	
YELLOW TIE = 6" [152mm]	
GREEN TIE = 8" [203mm]	
RED TIE = 10" [254mm]	
BROWN TIE = 12" [305mm]	
BLACK TIE + XT = 14" [356mm]	
ETC.	



1. INTERIOR WALL FINISH - GYPSUM WALLBOARD OR EQ. FASTEN TO PLASTIC TIE FLANGES
2. QUAD-LOCK PLASTIC TIE (YELLOW SHOWN) SPACED AT 12" [305mm] O/C VER & HOR
3. QUAD-LOCK ULTRA PANEL 3.125" [79mm] THICK EPS
4. VERTICAL WALL REINFORCEMENT
5. HORIZONTAL WALL REINFORCEMENT
6. DOOR TRIM
7. SELF EXPANDING SEAL TAPE
8. JAMB REINFORCEMENT AS SPECIFIED
9. DOOR JAMB
10. SHIMS
11. CAULKING WITH BACKER ROD
12. STUCCO FOAM TRIM - COVERED WITH STUCCO TAPE
13. PRESSURE TREATED WOOD BUCK WITH NAILS OR LAG BOLTS FOR SHEAR RESISTANCE
14. SELF ADHERED MEMBRANE (SAM) FLASHING APPLY WATER BASED PRIMER ON ALL EXPOSED CONTACT SURFACES - SEE DETAIL QLU-425
15. EXTERIOR WALL FINISH - STUCCO
16. STANDARD BRICK TIE
17. BRICK VENEER
18. ICF BRICK TIE - INSERTED PRIOR TO POUR AT SPECIFIED INTERVALS

QUAD-LOCK®
Building Systems

Quad-Lock Building Systems
7398 - 132nd Street
Surrey, BC V3W 4M7
Canada
888.711.5625 - Toll Free
604.590.3111
604.590.8412 - fax
www.quadlock.com

IT IS THE RESPONSIBILITY OF THE USER TO COMPLY WITH ALL APPLICABLE REGULATIONS AND BUILDING CODE REQUIREMENTS CONCERNING THE USE OF THESE PRODUCTS.

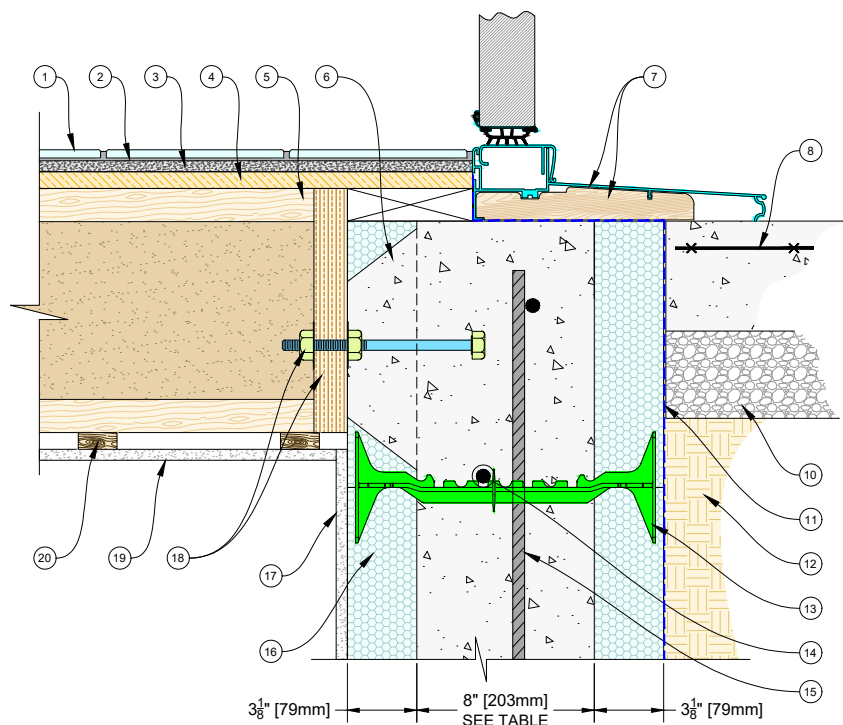
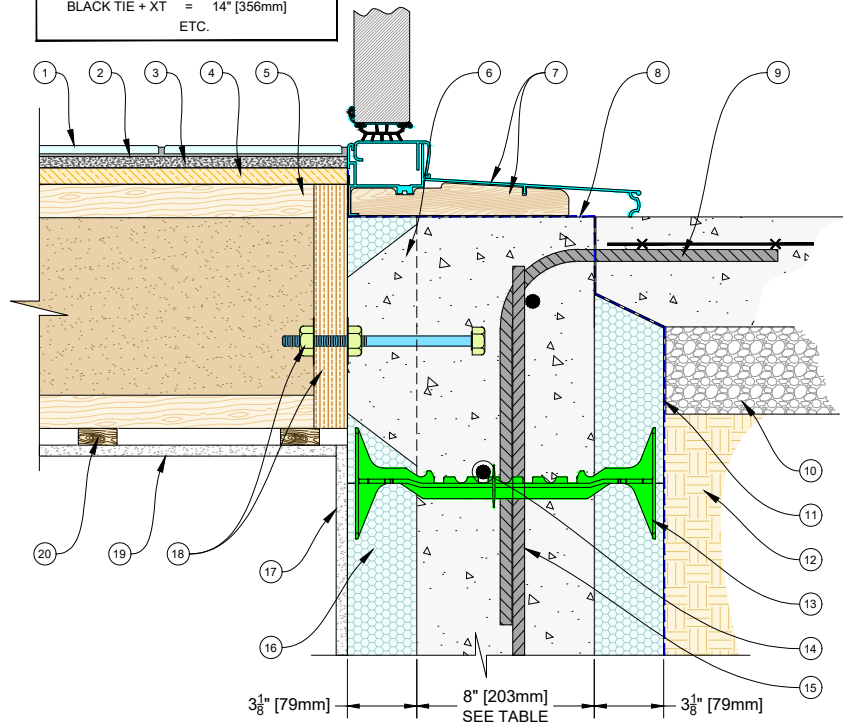
IT IS FURTHER THE RESPONSIBILITY OF THE USER TO RESEARCH AND UNDERSTAND SAFE METHODS OF USE AND HANDLING OF THESE PRODUCTS.

EXTERIOR DOOR JAMB DETAILS WITH STUCCO AND BRICK FINISH

DATE DRAWN:	2018-06-01	SCALE:	NOT TO SCALE
REVISION NO:	N/A	SHEET SIZE:	8.5" x 11" [216mm x 279mm]
REVISION DATE:	YYYY-MM-DD	APPROVED ON:	2018-06-04
DRAWN BY:	Z. PROSTRAN	APPROVED BY:	G. KUSTERMAN
			DRAWING NO: QLU-401

QUAD-LOCK R-28 [U-0.21] WALL

TIE NAME	CONCRETE CORE THICKNESS
BLUE TIE = 4" [102mm]	
YELLOW TIE = 6" [152mm]	
GREEN TIE = 8" [203mm]	
RED TIE = 10" [254mm]	
BROWN TIE = 12" [305mm]	
BLACK TIE + XT = 14" [356mm]	
ETC.	



1.	FLOOR TILE FINISH
2.	TILE GROUT
3.	CEMENT BACKER BOARD
4.	SUBFLOOR
5.	WOOD I-JOISTS AS SPECIFIED
6.	CUT OUT EPS TO ALLOW CONCRETE TO COME TO SURFACE AT BOLT LOCATIONS
7.	DOOR THRESHOLD - FASTEN TO CONCRETE
8.	APPLY WATER BASED PRIMER ON ALL EXPOSED CONCRETE SURFACES
9.	REBAR DOWELS AS SPECIFIED
10.	ZERO COMPACTION SAND OR GRAVEL
11.	PEEL&STICK WATER PROOFING
12.	BACKFILL
13.	QUAD-LOCK PLASTIC TIE (GREEN SHOWN) SPACED AT 12" [305mm] O/C VER & HOR
14.	HORIZONTAL WALL REINFORCEMENT PLACED ALTERNATELY LEFT AND RIGHT OF VER. REINF.
15.	VERTICAL WALL REINFORCEMENT
16.	QUAD-LOCK ULTRA PANEL 3.125" [79mm] THICK EPS
17.	INTERIOR WALL FINISH - GYPSUM WALLBOARD OR EQ. FASTEN TO PLASTIC TIE FLANGES
18.	LEDGER BOARD WITH STUDDED BOLTS AS SPECIFIED
19.	CEILING FINISH
20.	FURRING FOR CEILING FINISH ATTACHMENT

QUAD-LOCK®
Building Systems

Quad-Lock Building Systems
7398 - 132nd Street
Surrey, BC V3W 4M7
Canada
888.711.5625 - Toll Free
604.590.3111
604.590.8412 - fax
www.quadlock.com

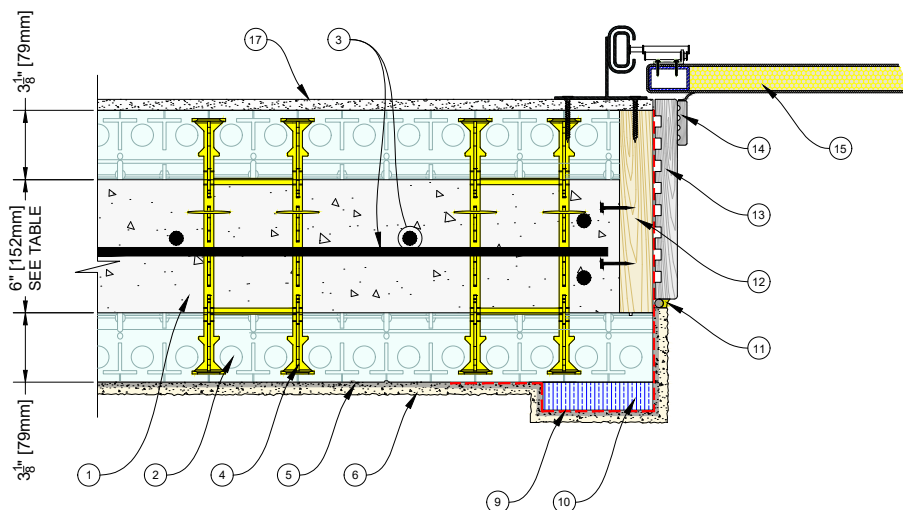
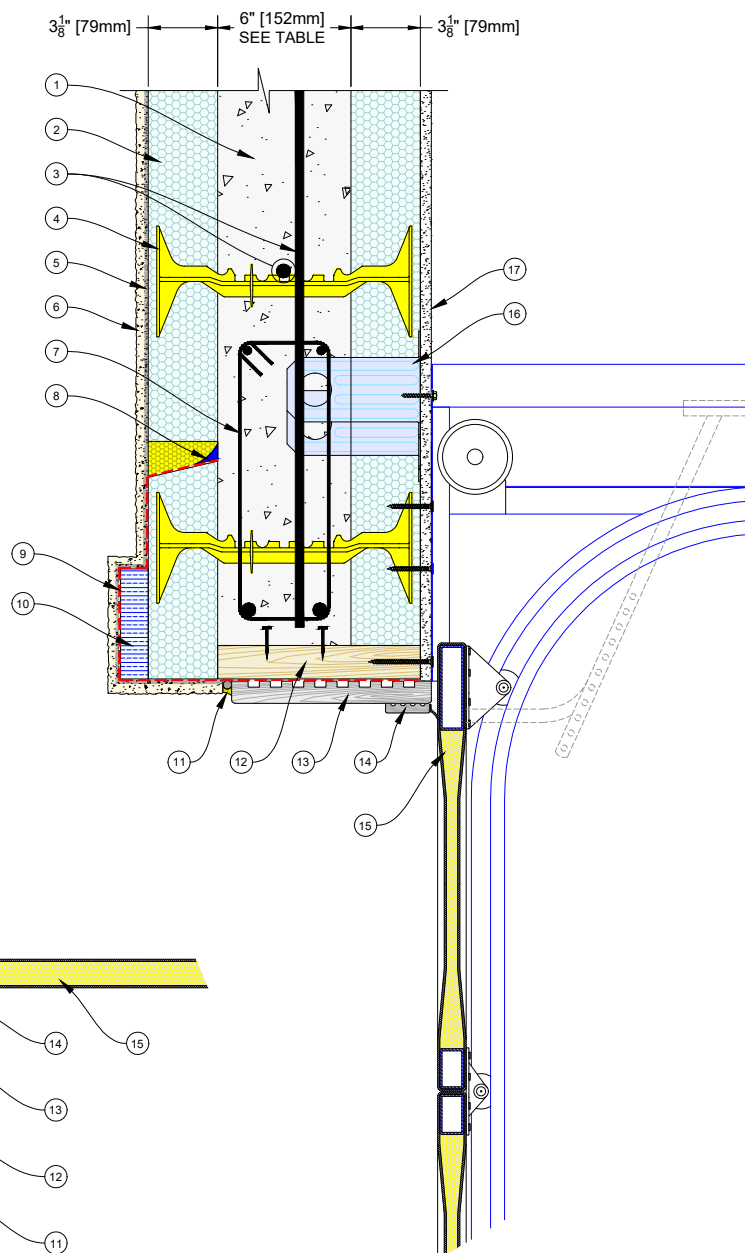
IT IS THE RESPONSIBILITY OF THE USER TO COMPLY WITH ALL APPLICABLE REGULATIONS AND BUILDING CODE REQUIREMENTS CONCERNING THE USE OF THESE PRODUCTS.

IT IS FURTHER THE RESPONSIBILITY OF THE USER TO RESEARCH AND UNDERSTAND SAFE METHODS OF USE AND HANDLING OF THESE PRODUCTS.

DOOR THRESHOLD DETAILS SLAB CONNECTED TO WALL AND BUTTING TO EPS

DATE DRAWN:	2018-06-01	SCALE:	NOT TO SCALE
REVISION NO.:	N/A	SHEET SIZE:	8.5" x 11" [216mm x 279mm]
REVISION DATE:	YYYY-MM-DD	APPROVED ON:	2018-06-04
DRAWN BY:	Z. PROSTRAN	APPROVED BY:	G. KUSTERMANN
			DRAWING NO. QLU-402

1.	REINFORCED CONCRETE CORE
2.	QUAD-LOCK ULTRA PANEL 3.125" [79mm] THICK EPS
3.	VERTICAL & HORIZONTAL WALL REINFORCEMENT
4.	QUAD-LOCK PLASTIC TIE (YELLOW SHOWN) SPACED AT 12" [305mm] O/C VER & HOR
5.	BASE COAT
6.	STUCCO FINISH COAT
7.	LINTEL REINFORCEMENT AS SPECIFIED
8.	CUT OUT EPS REGLET (~15° SLOPE) AT HEAD TO EXPOSE CONCRETE. REGLET TO EXTEND MIN. 6" [150mm] BEYOND OPENING. RE-INSULATE WITH CUT-OUT EPS OR SPRAY-FOAM. SEE DETAIL QLU-425
9.	SELF ADHERED MEMBRANE (SAM) WITH FABRIC SURFACE - CAULKED TO CONCRETE. PRIME ALL CONTACT SURFACES WITH WATER BASED PRIMER. THE PRIMER MUST BE COMPATIBLE WITH ANY CAULKING APPLIED. SEE DETAIL QLU-425
10.	EPS STUCCO TRIM
11.	BACKER ROD AND SEALANT
12.	'HYBRID' WOOD BUCK WITH SHEAR FASTENERS
13.	DOOR FINISH TRIM
14.	STOP MOLDING TRIM WITH VINYL SEAL FLAP
15.	GARAGE DOOR & HARDWARE
16.	ATTACHMENT POINTS AT REQUIRED SPACING: SIMPSON ICFVL OR REMOVE EPS & BUILD OUT WITH WOOD OR BRING CONCRETE TO SURFACE
17.	INTERIOR WALL FINISH - GYPSUM WALLBOARD OR EQ. FASTEN TO PLASTIC TIE FLANGES



QUAD-LOCK R-28 [U-0.21] WALL	
TIE NAME	CONCRETE CORE THICKNESS
BLUE TIE	= 4" [102mm]
YELLOW TIE	= 6" [152mm]
GREEN TIE	= 8" [203mm]
RED TIE	= 10" [254mm]
BROWN TIE	= 12" [305mm]
BLACK TIE + XT	= 14" [356mm]
ETC.	

QUAD-LOCK®
Building Systems

Quad-Lock Building Systems
7398 - 132nd Street
Surrey, BC V3W 4M7
Canada
888.711.5625 - Toll Free
604.590.3111
604.590.8412 - fax
www.quadlock.com

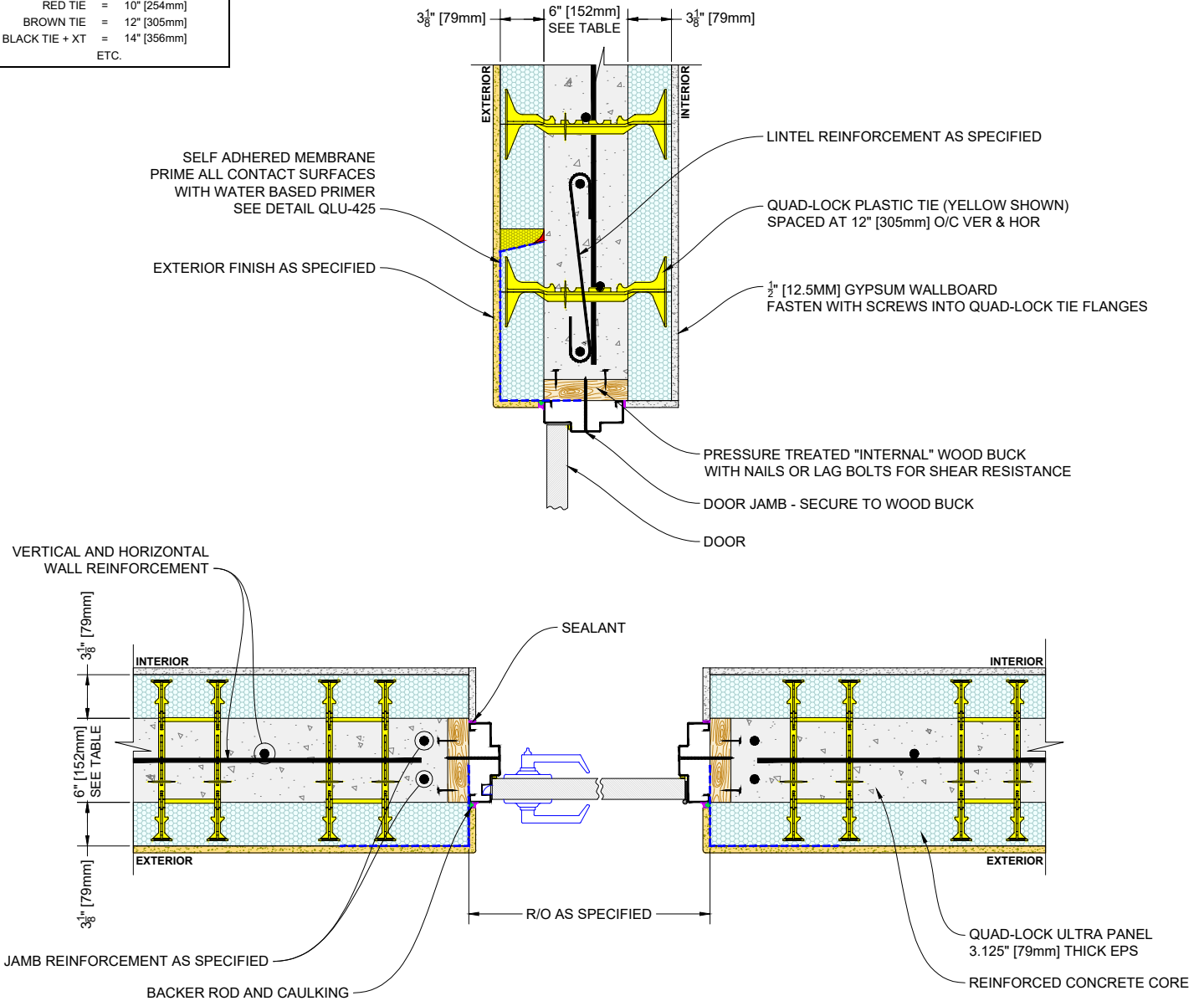
IT IS THE RESPONSIBILITY OF THE USER TO COMPLY WITH ALL APPLICABLE REGULATIONS AND BUILDING CODE REQUIREMENTS CONCERNING THE USE OF THESE PRODUCTS.

IT IS FURTHER THE RESPONSIBILITY OF THE USER TO RESEARCH AND UNDERSTAND SAFE METHODS OF USE AND HANDLING OF THESE PRODUCTS.

GARAGE DOOR DETAILS - HEAD AND JAMB

DATE DRAWN:	2018-06-01	SCALE:	NOT TO SCALE
REVISION NO:	N/A	SHEET SIZE:	8.5" x 11" [216mm x 279mm]
REVISION DATE:	YYYY-MM-DD	APPROVED ON:	2018-06-04
DRAWN BY:	Z. PROSTRAN	APPROVED BY:	G. KUSTERMANN
			QLU-403

QUAD-LOCK R-28 [U-0.21] WALL	
TIE NAME	CONCRETE CORE THICKNESS
BLUE TIE	= 4" [102mm]
YELLOW TIE	= 6" [152mm]
GREEN TIE	= 8" [203mm]
RED TIE	= 10" [254mm]
BROWN TIE	= 12" [305mm]
BLACK TIE + XT	= 14" [356mm]
ETC.	



QUAD-LOCK®
Building Systems

Quad-Lock Building Systems
7398 - 132nd Street
Surrey, BC V3W 4M7
Canada
888.711.5625 - Toll Free
604.590.3111
604.590.8412 - fax
www.quadlock.com

IT IS THE RESPONSIBILITY OF THE USER TO COMPLY WITH ALL APPLICABLE REGULATIONS AND BUILDING CODE REQUIREMENTS CONCERNING THE USE OF THESE PRODUCTS.

IT IS FURTHER THE RESPONSIBILITY OF THE USER TO RESEARCH AND UNDERSTAND SAFE METHODS OF USE AND HANDLING OF THESE PRODUCTS.

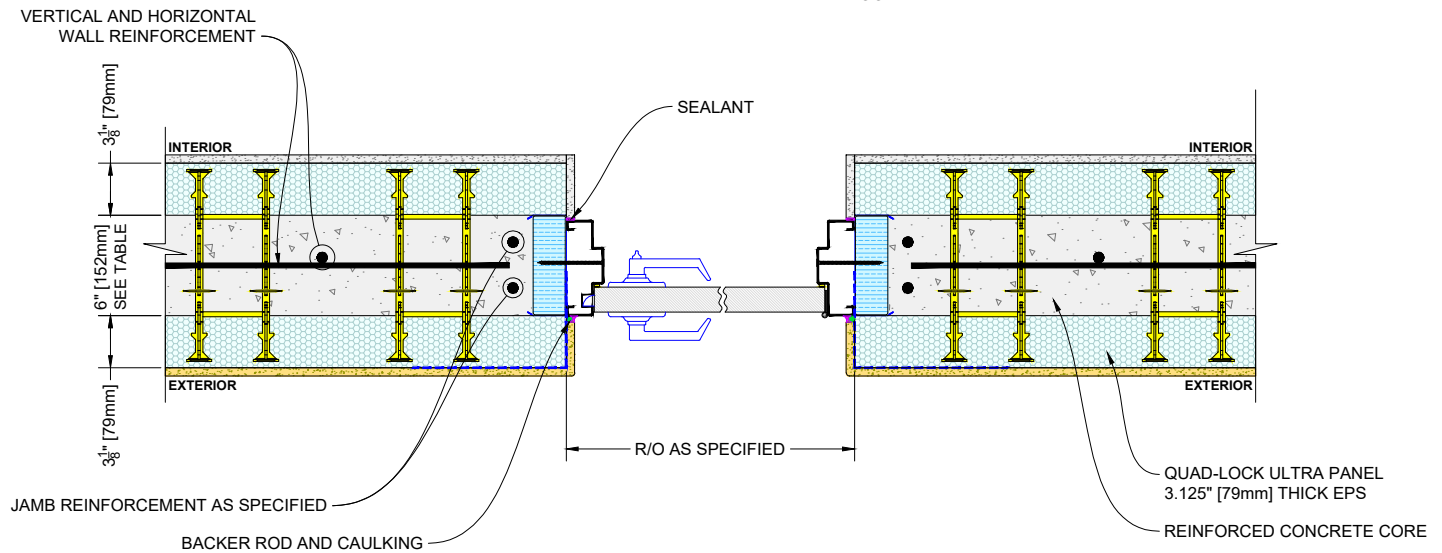
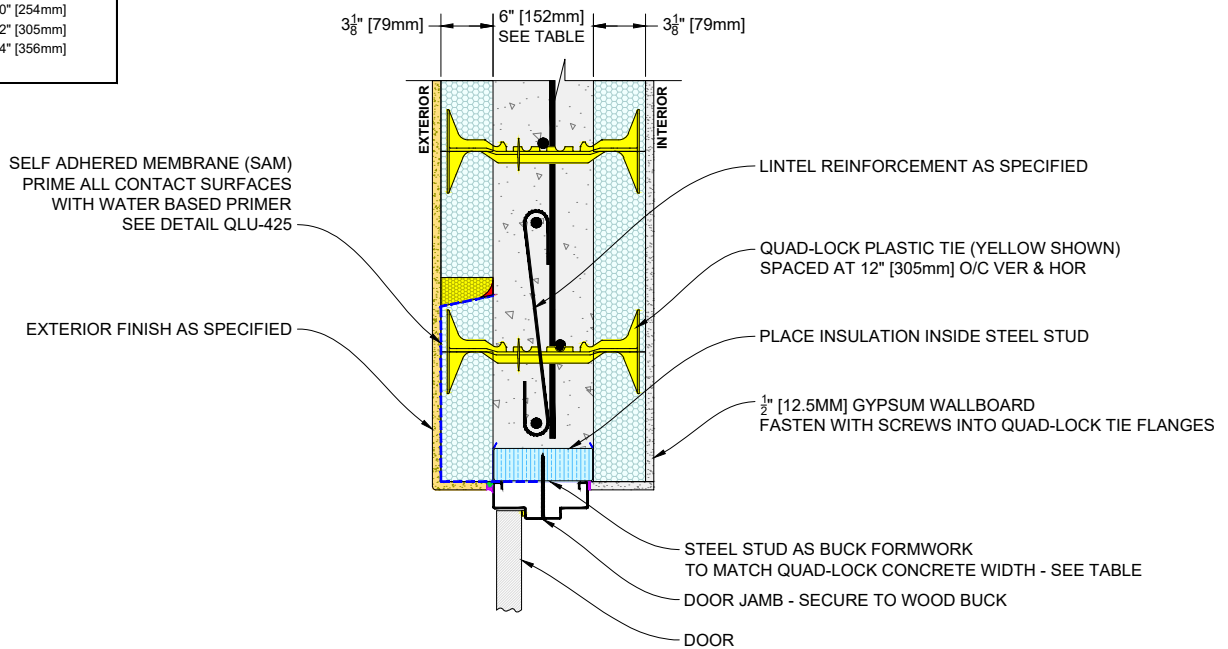
EXTERIOR DOOR HEAD AND JAMB DETAIL

DOOR FRAME ATTACHED TO WOOD BUCK

DATE DRAWN:	2018-06-01	SCALE:	NOT TO SCALE
REVISION NO.:	N/A	SHEET SIZE:	8.5" x 11" [216mm x 279mm]
REVISION DATE:	YYYY-MM-DD	APPROVED ON:	2018-06-04
DRAWN BY:	Z. PROSTRAN	APPROVED BY:	G. KUSTERMAN
			DRAWING NO. QLU-404

QUAD-LOCK R-28 [U-0.21] WALL

TIE NAME	CONCRETE CORE THICKNESS
BLUE TIE = 4" [102mm]	
YELLOW TIE = 6" [152mm]	
GREEN TIE = 8" [203mm]	
RED TIE = 10" [254mm]	
BROWN TIE = 12" [305mm]	
BLACK TIE + XT = 14" [356mm]	
ETC.	



QUAD-LOCK®
Building Systems

Quad-Lock Building Systems
7398 - 132nd Street
Surrey, BC V3W 4M7
Canada
888.711.5625 - Toll Free
604.590.3111
604.590.8412 - fax
www.quadlock.com

IT IS THE RESPONSIBILITY OF THE USER TO COMPLY WITH ALL APPLICABLE REGULATIONS AND BUILDING CODE REQUIREMENTS CONCERNING THE USE OF THESE PRODUCTS.

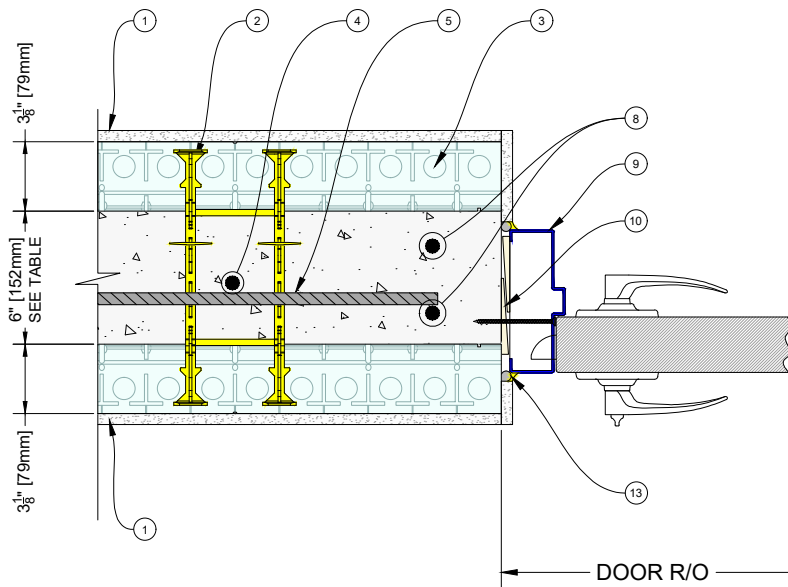
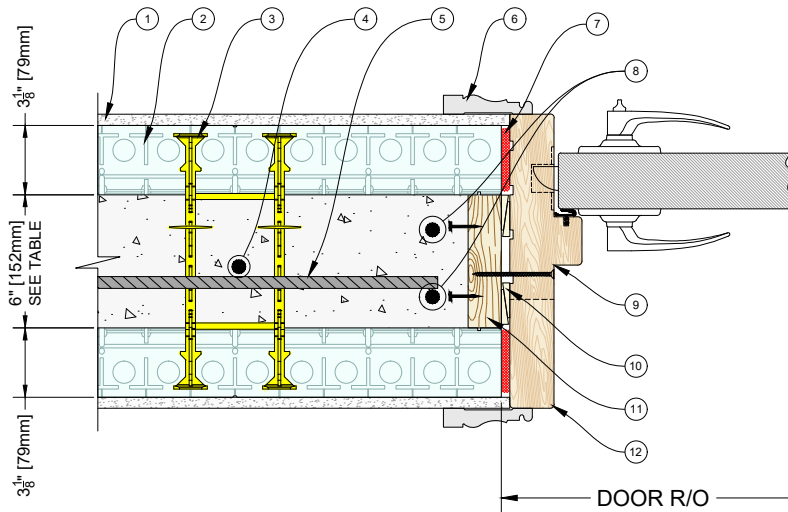
IT IS FURTHER THE RESPONSIBILITY OF THE USER TO RESEARCH AND UNDERSTAND SAFE METHODS OF USE AND HANDLING OF THESE PRODUCTS.

EXTERIOR DOOR HEAD AND JAMB DETAIL DOOR FRAME ATTACHED TO INSULATED STEEL STUD BUCK

DATE DRAWN:	2018-06-01	SCALE:	NOT TO SCALE
REVISION NO.:	N/A	SHEET SIZE:	8.5" x 11" [216mm x 279mm]
REVISION DATE:	YYYY-MM-DD	APPROVED ON:	2018-06-04
DRAWN BY:	Z. PROSTRAN	APPROVED BY:	G. KUSTERMANN
			DRAWING NO. QLU-405

QUAD-LOCK R-28 [U-0.21] WALL

TIE NAME	CONCRETE CORE THICKNESS
BLUE TIE = 4" [102mm]	
YELLOW TIE = 6" [152mm]	
GREEN TIE = 8" [203mm]	
RED TIE = 10" [254mm]	
BROWN TIE = 12" [305mm]	
BLACK TIE + XT = 14" [356mm]	
ETC.	



1.	INTERIOR WALL FINISH - FASTEN TO PLASTIC TIE FLANGES
2.	QUAD-LOCK PLASTIC TIE (YELLOW SHOWN) SPACED AT 12" [305mm] O/C VER & HOR
3.	QUAD-LOCK ULTRA PANEL 3.125" [79mm] THICK EPS
4.	VERTICAL WALL REINFORCEMENT
5.	HORIZONTAL WALL REINFORCEMENT
6.	DOOR TRIM
7.	SELF EXPANDING SEAL TAPE
8.	JAMB REINFORCEMENT AS SPECIFIED
9.	DOOR JAMB
10.	SHIMS
11.	PRESSURE TREATED "INTERNAL" WOOD BUCK WITH NAILS OR LAG BOLTS FOR SHEAR RESISTANCE
12.	JAMB EXTENSION
13.	BACKER ROD AND CAULKING

QUAD-LOCK®
Building Systems

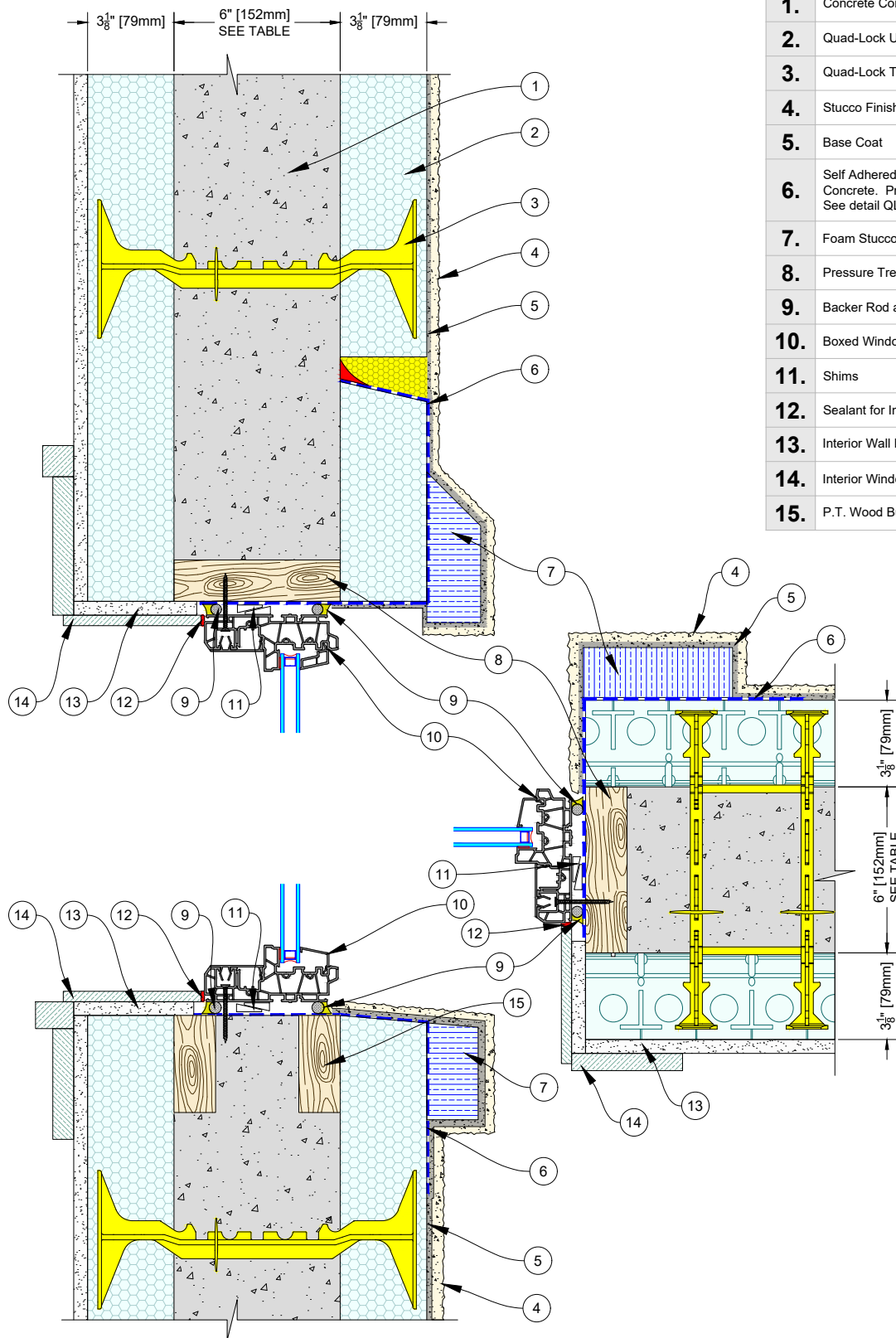
Quad-Lock Building Systems
7398 - 132nd Street
Surrey, BC V3W 4M7
Canada
888.711.5625 - Toll Free
604.590.3111
604.590.8412 - fax
www.quadlock.com

IT IS THE RESPONSIBILITY OF THE USER TO COMPLY WITH ALL APPLICABLE REGULATIONS AND BUILDING CODE REQUIREMENTS CONCERNING THE USE OF THESE PRODUCTS.

IT IS FURTHER THE RESPONSIBILITY OF THE USER TO RESEARCH AND UNDERSTAND SAFE METHODS OF USE AND HANDLING OF THESE PRODUCTS.

INTERIOR DOOR JAMB DETAILS WITH WOOD AND METAL JAMB

DATE DRAWN:	2018-06-01	SCALE:	NOT TO SCALE
REVISION NO:	N/A	SHEET SIZE:	8.5" x 11" [216mm x 279mm]
REVISION DATE:	YYYY-MM-DD	APPROVED ON:	2018-06-04
DRAWN BY:	Z. PROSTRAN	APPROVED BY:	G. KUSTERMAN
			DRAWING NO: QLU-406



1.	Concrete Core - Reinforcement Omitted For Clarity
2.	Quad-Lock Ultra Panel - 3.125\" [79mm] Thick EPS
3.	Quad-Lock Tie (Yellow Shown) @ 12\" [305mm] O/C Ver & Hor
4.	Stucco Finish Coat
5.	Base Coat
6.	Self Adhered Membrane (SAM) with Fabric Surface - Caulked to Concrete. Prime all contact surfaces with water based primer. See detail QLU-425
7.	Foam Stucco Trim
8.	Pressure Treated Internal Wood Buck
9.	Backer Rod and Sealant
10.	Boxed Window Frame
11.	Shims
12.	Sealant for Interior Window Trim
13.	Interior Wall Finish (Gypsum Wallboard or eq.)
14.	Interior Window Trim
15.	P.T. Wood Buck With Space for Concrete Pour

QUAD-LOCK R-28 [U-0.21] WALL	
TIE NAME	CONCRETE CORE THICKNESS
BLUE TIE = 4\" [102mm]	
YELLOW TIE = 6\" [152mm]	
GREEN TIE = 8\" [203mm]	
RED TIE = 10\" [254mm]	
BROWN TIE = 12\" [305mm]	
BLACK TIE + XT = 14\" [356mm]	
ETC.	

QUAD-LOCK®
Building Systems

Quad-Lock Building Systems
7398 - 132nd Street
Surrey, BC V3W 4M7
Canada
888.711.5625 - Toll Free
604.590.3111
604.590.8412 - fax
www.quadlock.com

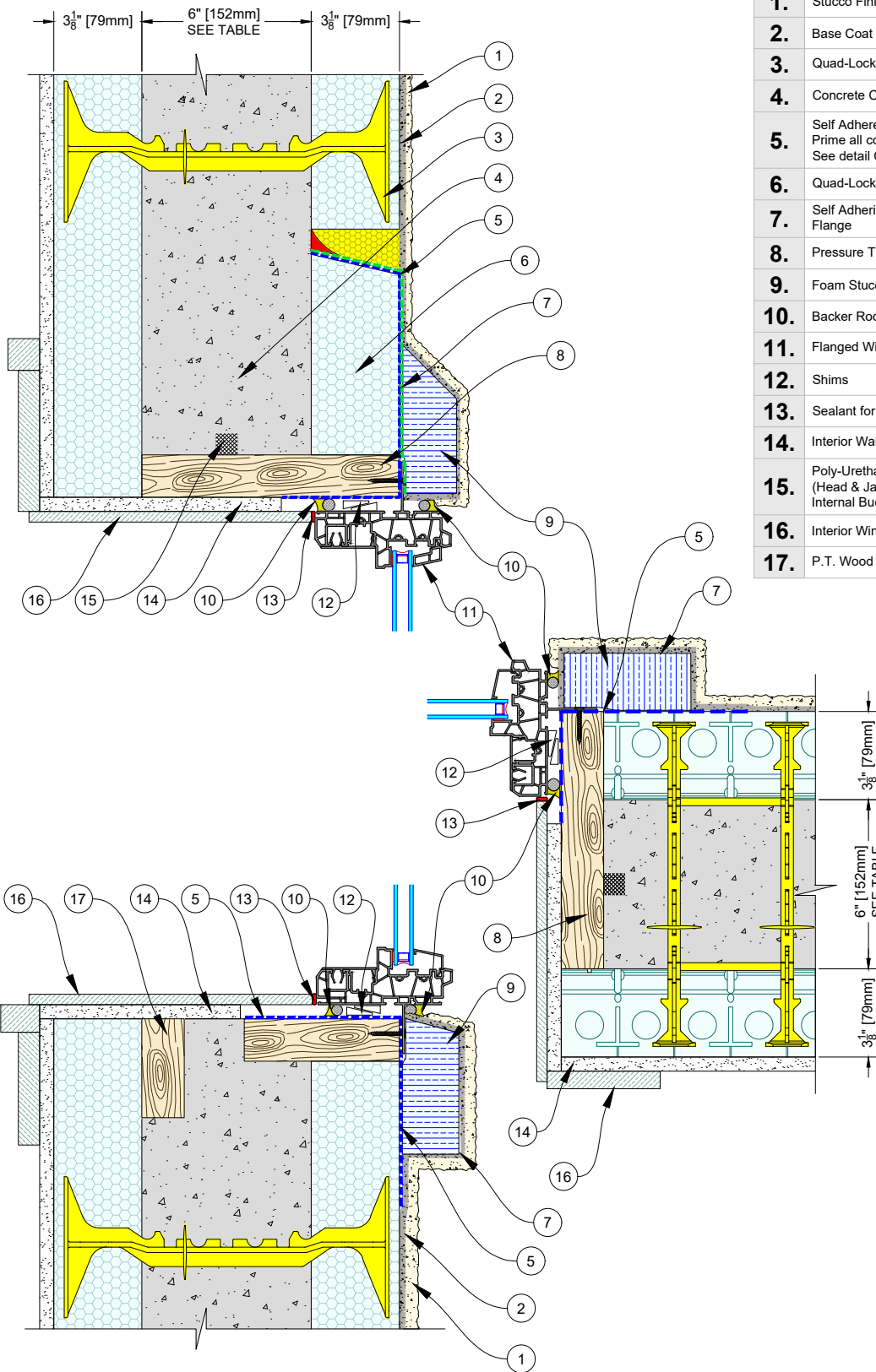
IT IS THE RESPONSIBILITY OF THE USER TO COMPLY WITH ALL APPLICABLE REGULATIONS AND BUILDING CODE REQUIREMENTS CONCERNING THE USE OF THESE PRODUCTS.

IT IS FURTHER THE RESPONSIBILITY OF THE USER TO RESEARCH AND UNDERSTAND SAFE METHODS OF USE AND HANDLING OF THESE PRODUCTS.

WINDOW DETAILS - HEAD, JAMB AND SILL

STUCCO FINISH - BOXED WINDOW CENTERED - ATTACHED TO WOOD BUCK

DATE DRAWN:	2018-06-01	SCALE:	NOT TO SCALE
REVISION NO:	N/A	SHEET SIZE:	8.5" x 11" [216mm x 279mm]
REVISION DATE:	YYYY-MM-DD	APPROVED ON:	2018-06-04
DRAWN BY:	Z. PROSTRAN	APPROVED BY:	G. KUSTERMANN
			QLU-407



1.	Stucco Finish Coat
2.	Base Coat
3.	Quad-Lock Tie (Yellow Shown) @ 12" [305mm] O/C Ver & Hor
4.	Concrete Core - Reinforcement Omitted For Clarity
5.	Self Adhered Membrane (SAM) with Fabric Surface. Prime all contact surfaces with water based primer. See detail QLU-425
6.	Quad-Lock Ultra Panel - 3.125" [79mm] Thick EPS
7.	Self Adhering Stucco Tape with Fabric Surface over the Window Flange
8.	Pressure Treated "Hybrid" Wood Buck
9.	Foam Stucco Trim
10.	Backer Rod and Sealant
11.	Flanged Window Frame
12.	Shims
13.	Sealant for Interior Window Trim
14.	Interior Wall Finish (Gypsum Wallboard or eq.)
15.	Poly-Urethane Tape Installed on Concrete Face of Wood Buck (Head & Jamb) Prior to Pour. This Tape is Not Required for Internal Bucks
16.	Interior Window Trim
17.	P.T. Wood Buck With Space for Concrete Pour

QUAD-LOCK R-28 [U-0.21] WALL	
TIE NAME	CONCRETE CORE THICKNESS
BLUE TIE	= 4" [102mm]
YELLOW TIE	= 6" [152mm]
GREEN TIE	= 8" [203mm]
RED TIE	= 10" [254mm]
BROWN TIE	= 12" [305mm]
BLACK TIE + XT	= 14" [356mm]
ETC.	

QUAD-LOCK®
Building Systems

Quad-Lock Building Systems
7398 - 132nd Street
Surrey, BC V3W 4M7
Canada
888.711.5625 - Toll Free
604.590.3111
604.590.8412 - fax
www.quadlock.com

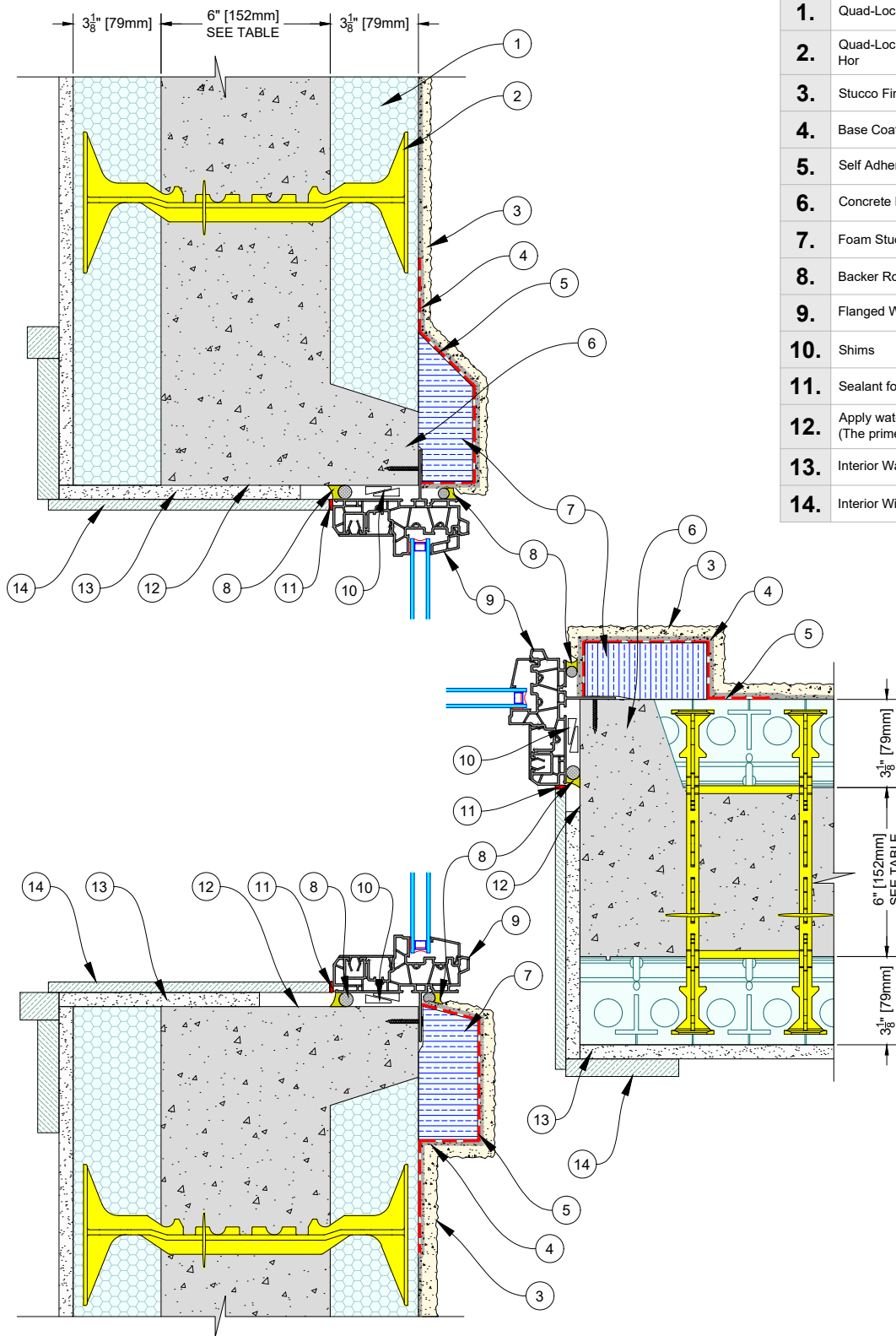
IT IS THE RESPONSIBILITY OF THE USER TO COMPLY WITH ALL APPLICABLE REGULATIONS AND BUILDING CODE REQUIREMENTS CONCERNING THE USE OF THESE PRODUCTS.

IT IS FURTHER THE RESPONSIBILITY OF THE USER TO RESEARCH AND UNDERSTAND SAFE METHODS OF USE AND HANDLING OF THESE PRODUCTS.

WINDOW DETAILS - HEAD, JAMB AND SILL

STUCCO FINISH - FLANGED WINDOW FLUSHED - ATTACHED TO WOOD BUCK

DATE DRAWN:	2018-06-01	SCALE:	NOT TO SCALE
REVISION NO:	N/A	SHEET SIZE:	8.5" x 11" [216mm x 279mm]
REVISION DATE:	YYYY-MM-DD	APPROVED ON:	2018-06-04
DRAWN BY:	Z. PROSTRAN	APPROVED BY:	G. KUSTERMAN
			QLU-408



1.	Quad-Lock Ultra Panel - 3.125" [79mm] Thick EPS
2.	Quad-Lock Tie (Yellow Shown) @ 12" [305mm] O/C Ver & Hor
3.	Stucco Finish Coat
4.	Base Coat
5.	Self Adhering Stucco Tape with Fabric Surface
6.	Concrete Brought Out as Waterproof Plane (SEE 12 BELOW)
7.	Foam Stucco Trim
8.	Backer Rod and Sealant
9.	Flanged Window Frame
10.	Shims
11.	Sealant for Interior Window Trim
12.	Apply water based primer on all exposed concrete surfaces (The primer must be compatible with the caulking)
13.	Interior Wall Finish (Gypsum Wallboard or eq.)
14.	Interior Window Trim

QUAD-LOCK R-28 [U-0.21] WALL	
TIE NAME	CONCRETE CORE THICKNESS
BLUE TIE	= 4" [102mm]
YELLOW TIE	= 6" [152mm]
GREEN TIE	= 8" [203mm]
RED TIE	= 10" [254mm]
BROWN TIE	= 12" [305mm]
BLACK TIE + XT	= 14" [356mm]
ETC.	

QUAD-LOCK®
Building Systems

Quad-Lock Building Systems
7398 - 132nd Street
Surrey, BC V3W 4M7
Canada
888.711.5625 - Toll Free
604.590.3111
604.590.8412 - fax
www.quadlock.com

IT IS THE RESPONSIBILITY OF THE USER TO COMPLY WITH ALL APPLICABLE REGULATIONS AND BUILDING CODE REQUIREMENTS CONCERNING THE USE OF THESE PRODUCTS.

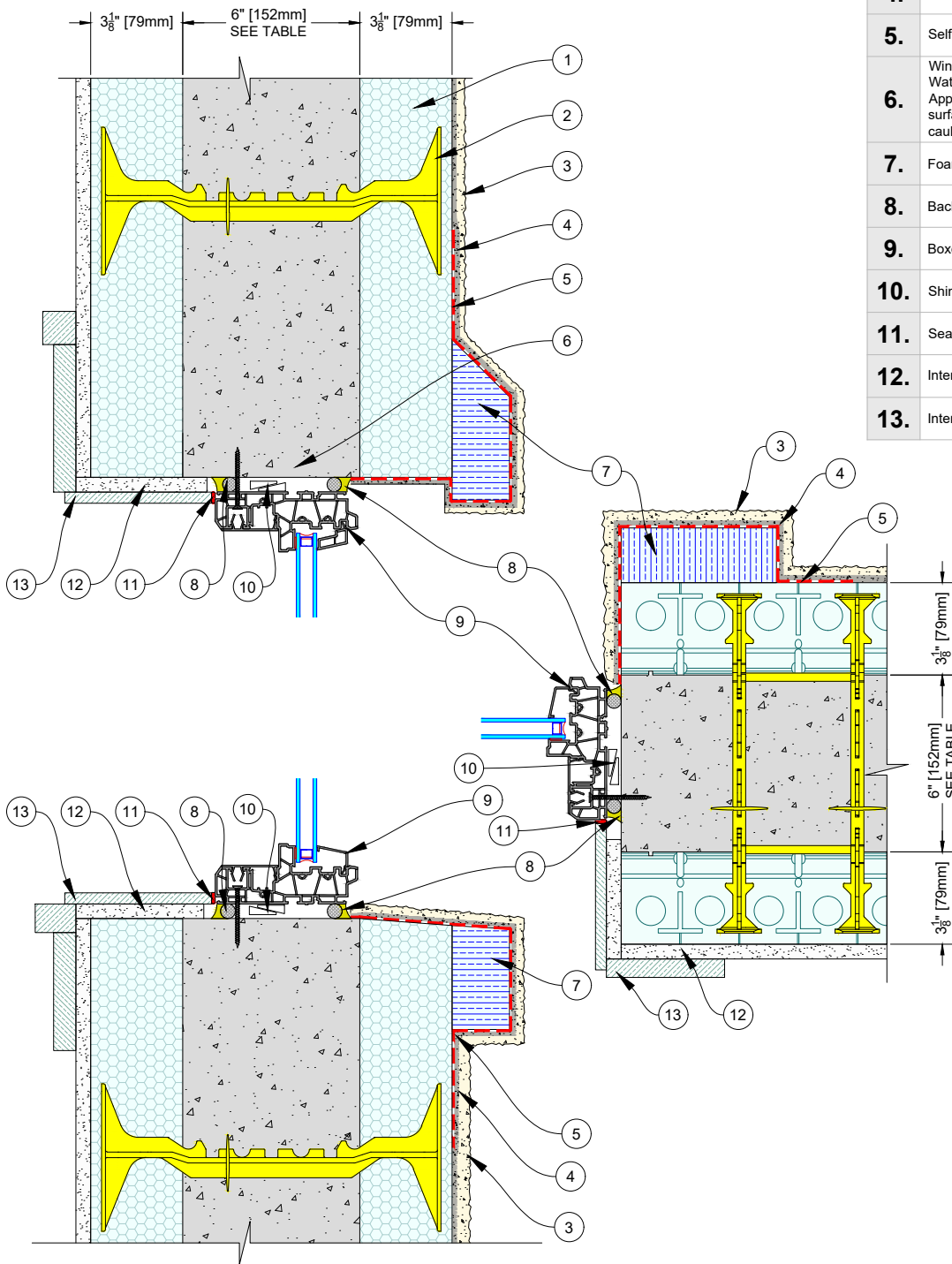
IT IS FURTHER THE RESPONSIBILITY OF THE USER TO RESEARCH AND UNDERSTAND SAFE METHODS OF USE AND HANDLING OF THESE PRODUCTS.

WINDOW DETAILS - HEAD, JAMB AND SILL

STUCCO FINISH - FLANGED WINDOW FLUSHED - ATTACHED TO CONCRETE

DATE DRAWN:	2018-06-01	SCALE:	NOT TO SCALE
REVISION NO:	N/A	SHEET SIZE:	8.5" x 11" [216mm x 279mm]
REVISION DATE:	YYYY-MM-DD	APPROVED ON:	2018-06-04
DRAWN BY:	Z. PROSTRAN	APPROVED BY:	G. KUSTERMANN
			QLU-409

1.	Quad-Lock Ultra Panel - 3.125" [79mm] Thick EPS
2.	Quad-Lock Tie (Yellow Shown) @ 12" [305mm] O/C Ver & Hor
3.	Stucco Finish Coat
4.	Base Coat
5.	Self Adhering Stucco Tape with Fabric Surface
6.	Window Attached Directly to Concrete Which Acts as Waterproof Plane Apply water based primer on all exposed concrete surfaces (The primer must be compatible with the caulking)
7.	Foam Stucco Trim
8.	Backer Rod and Sealant
9.	Boxed Window Frame
10.	Shims
11.	Sealant for Interior Window Trim
12.	Interior Wall Finish (Gypsum Wallboard or eq.)
13.	Interior Window Trim



QUAD-LOCK R-28 [U-0.21] WALL	
TIE NAME	CONCRETE CORE THICKNESS
BLUE TIE	= 4" [102mm]
YELLOW TIE	= 6" [152mm]
GREEN TIE	= 8" [203mm]
RED TIE	= 10" [254mm]
BROWN TIE	= 12" [305mm]
BLACK TIE + XT	= 14" [356mm]
ETC.	

QUAD-LOCK®
Building Systems

Quad-Lock Building Systems
7398 - 132nd Street
Surrey, BC V3W 4M7
Canada
888.711.5625 - Toll Free
604.590.3111
604.590.8412 - fax
www.quadlock.com

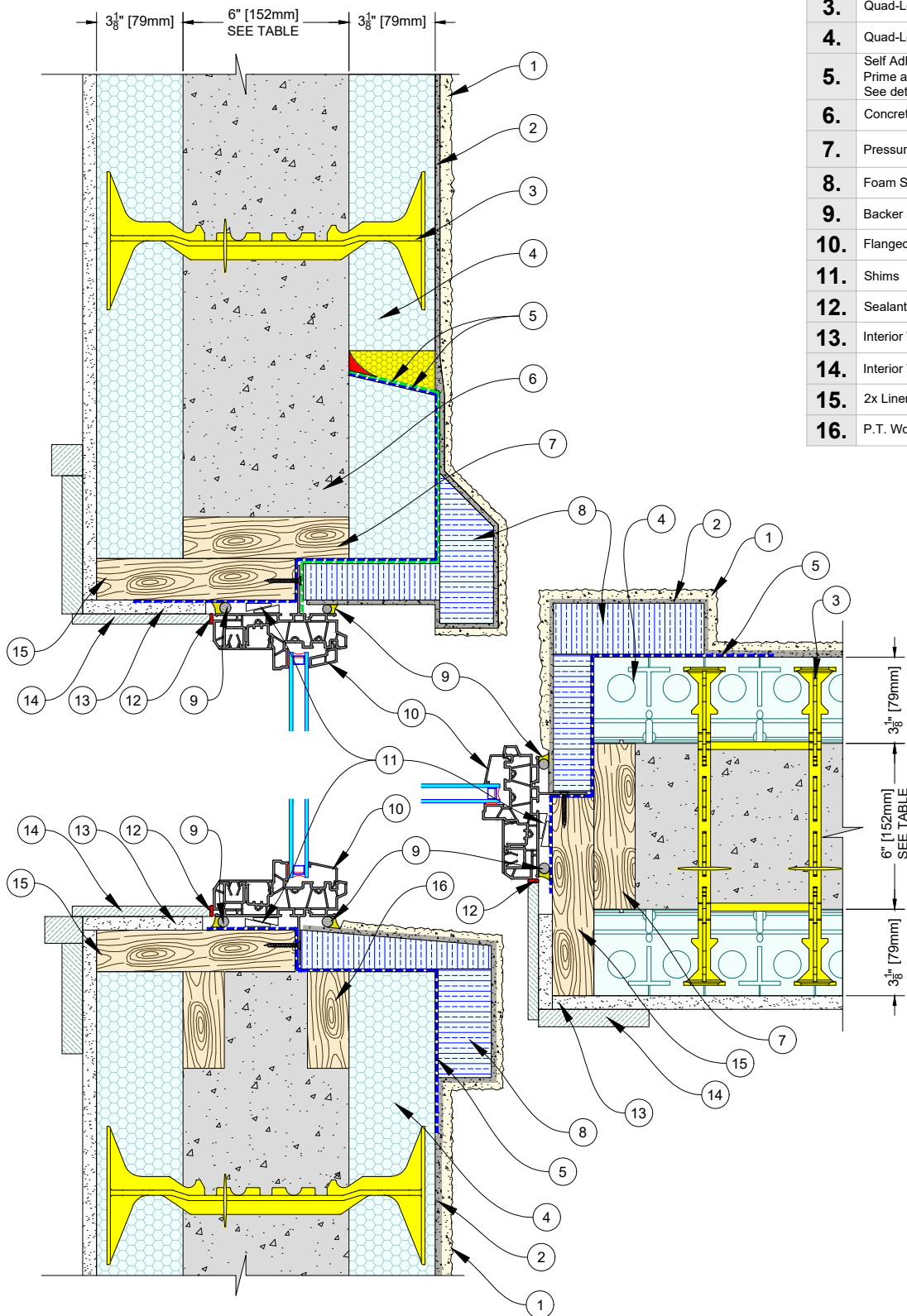
IT IS THE RESPONSIBILITY OF THE USER TO COMPLY WITH ALL APPLICABLE REGULATIONS AND BUILDING CODE REQUIREMENTS CONCERNING THE USE OF THESE PRODUCTS.

IT IS FURTHER THE RESPONSIBILITY OF THE USER TO RESEARCH AND UNDERSTAND SAFE METHODS OF USE AND HANDLING OF THESE PRODUCTS.

WINDOW DETAILS - HEAD, JAMB AND SILL

STUCCO FINISH - BOXED WINDOW CENTERED - ATTACHED TO CONCRETE

DATE DRAWN:	2018-06-01	SCALE:	NOT TO SCALE
REVISION NO:	N/A	SHEET SIZE:	8.5" x 11" [216mm x 279mm]
REVISION DATE:	YYYY-MM-DD	APPROVED ON:	2018-06-04
DRAWN BY:	Z. PROSTRAN	APPROVED BY:	G. KUSTERMANN
			QLU-410



1.	Stucco Finish Coat
2.	Base Coat
3.	Quad-Lock Tie (Yellow Shown) @ 12" [305mm] O/C Ver & Hor
4.	Quad-Lock Ultra Panel - 3.125" [79mm] Thick EPS
5.	Self Adhered Membrane (SAM) sealed to concrete. Prime all contact surfaces with water based primer. See detail QLU-425
6.	Concrete Core - Reinforcement Omitted For Clarity
7.	Pressure Treated "Internal" Wood Buck
8.	Foam Stucco Trim
9.	Backer Rod and Sealant
10.	Flanged Window Frame
11.	Shims
12.	Sealant for Interior Window Trim
13.	Interior Wall Finish (Gypsum Wallboard or eq.)
14.	Interior Window Trim
15.	2x Liner for Flanged Window Attachment
16.	P.T. Wood Buck With Space for Concrete Pour

QUAD-LOCK R-28 [U-0.21] WALL	
TIE NAME	CONCRETE CORE THICKNESS
BLUE TIE = 4" [102mm]	
YELLOW TIE = 6" [152mm]	
GREEN TIE = 8" [203mm]	
RED TIE = 10" [254mm]	
BROWN TIE = 12" [305mm]	
BLACK TIE + XT = 14" [356mm]	
ETC.	

QUAD-LOCK®
Building Systems

Quad-Lock Building Systems
7398 - 132nd Street
Surrey, BC V3W 4M7
Canada
888.711.5625 - Toll Free
604.590.3111
604.590.8412 - fax
www.quadlock.com

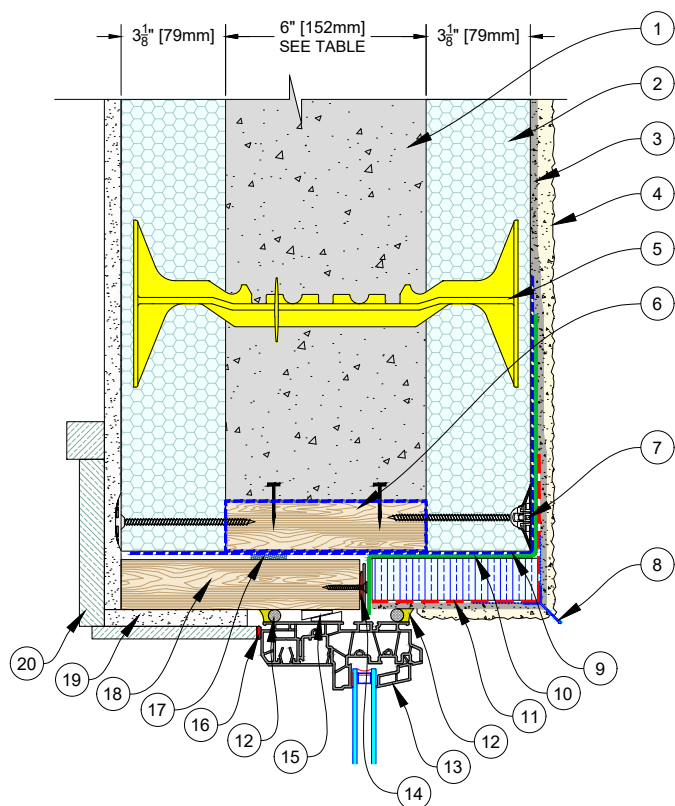
IT IS THE RESPONSIBILITY OF THE USER TO COMPLY WITH ALL APPLICABLE REGULATIONS AND BUILDING CODE REQUIREMENTS CONCERNING THE USE OF THESE PRODUCTS.

IT IS FURTHER THE RESPONSIBILITY OF THE USER TO RESEARCH AND UNDERSTAND SAFE METHODS OF USE AND HANDLING OF THESE PRODUCTS.

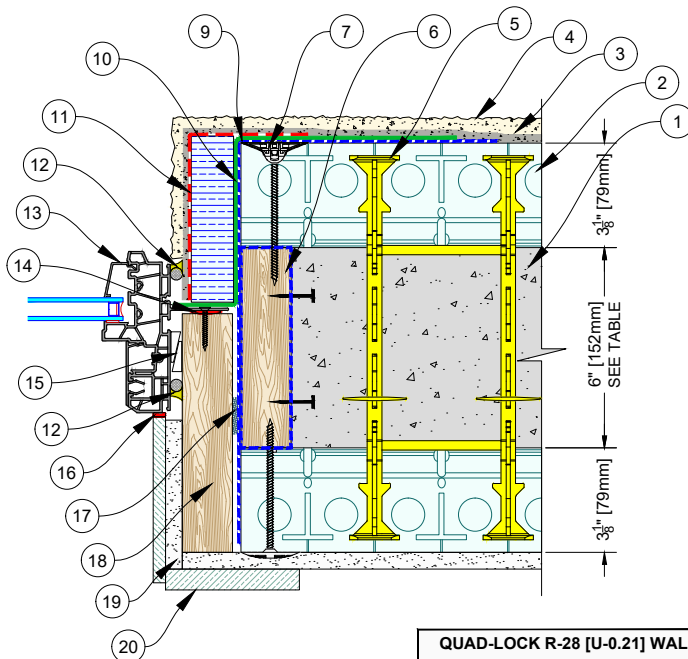
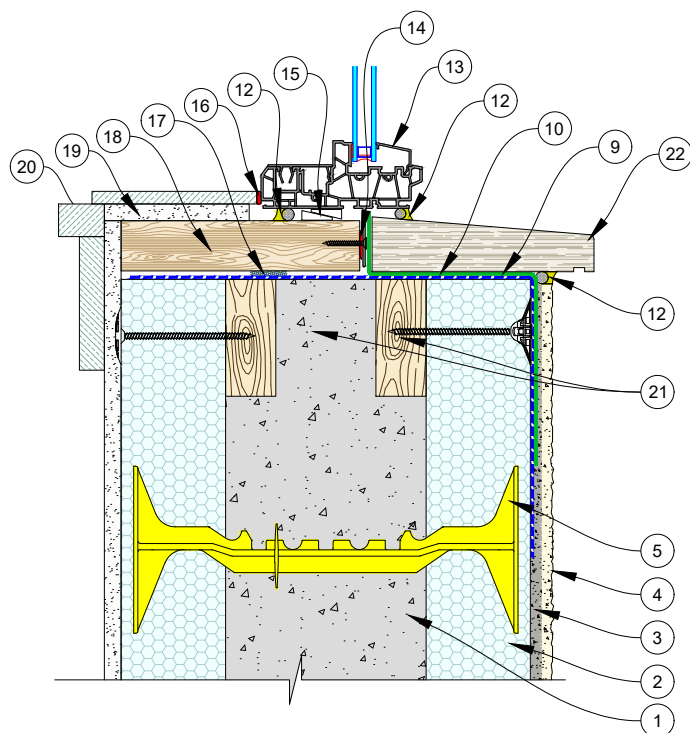
WINDOW DETAILS - HEAD, JAMB AND SILL

STUCCO FINISH - FLANGED WINDOW CENTERED, ATTACHED TO WOOD BUCK

DATE DRAWN:	2018-06-01	SCALE:	NOT TO SCALE
REVISION NO:	N/A	SHEET SIZE:	8.5" x 11" [216mm x 279mm]
REVISION DATE:	YYYY-MM-DD	APPROVED ON:	2018-06-04
DRAWN BY:	Z. PROSTRAN	APPROVED BY:	G. KUSTERMANN
			QLU-411



1. Concrete Core - Reinforcement Omitted For Clarity
2. Quad-Lock Ultra Panel - 3.125\" [79mm] Thick EPS
3. Stucco Base Coat
4. Stucco Finish Coat
5. Quad-Lock Tie (Yellow Shown) @ 12\" [305mm] O/C Ver & Hor
6. Internal Wood Buck with Shear Fasteners. Sealed with Water Based Liquid Applied Membrane (Ames® Blue Max™ or Eq.)
7. Buck Fasteners with Windlock Plastic Washers
8. Drip Edge Extrusion
9. --- Water Based Liquid Applied Membrane (Ames® Blue Max™ or Eq.)
10. --- Self Adhered Membrane (Peel&Stick Approved for flashing)
11. --- Self Adhering Stucco Tape with Fabric Surface
12. Backer Rod and Caulking
13. Flanged Window Frame - Fasten to Liner
14. Sealant for Window Flange
15. Shims
16. Sealant for Interior Window Trim
17. Double Faced Butyl Tape Between Liquid Waterproofing & Liner
18. Wood or LVL Liner - Fasten to Internal Wood Buck
19. Interior Wall Finish (Gypsum Wallboard or eq.)
20. Interior Window Trim
21. Wood Buck With Space for Concrete Pour (Double P.T. 2x on Edge)
22. Window Sill/Pan - Natural/Cultured Stone or Metal



QUAD-LOCK R-28 [U-0.21] WALL

TIE NAME	CONCRETE CORE THICKNESS
BLUE TIE = 4\" [102mm]	
YELLOW TIE = 6\" [152mm]	
GREEN TIE = 8\" [203mm]	
RED TIE = 10\" [254mm]	
BROWN TIE = 12\" [305mm]	
BLACK TIE + XT = 14\" [356mm]	
ETC.	

QUAD-LOCK®
Building Systems

Quad-Lock Building Systems
7398 - 132nd Street
Surrey, BC V3W 4M7
Canada
888.711.5625 - Toll Free
604.590.3111
604.590.8412 - fax
www.quadlock.com

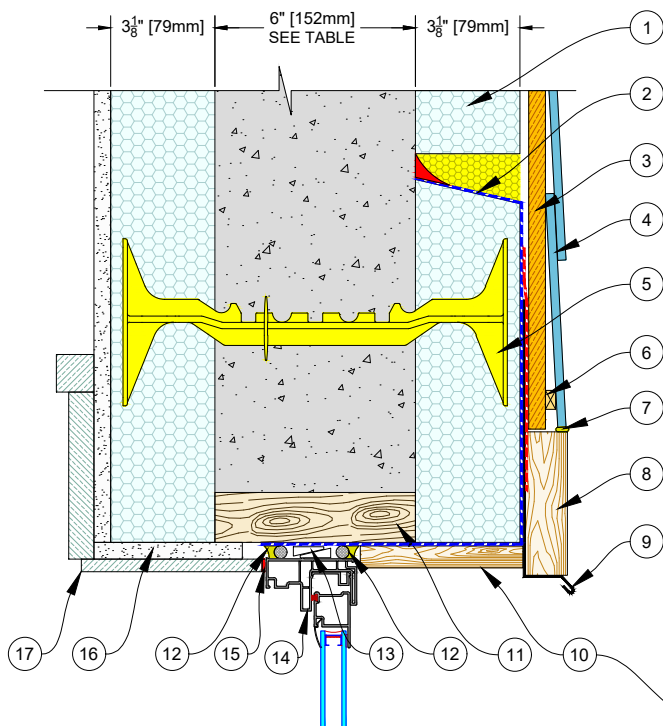
IT IS THE RESPONSIBILITY OF THE USER TO COMPLY WITH ALL APPLICABLE REGULATIONS AND BUILDING CODE REQUIREMENTS CONCERNING THE USE OF THESE PRODUCTS.

IT IS FURTHER THE RESPONSIBILITY OF THE USER TO RESEARCH AND UNDERSTAND SAFE METHODS OF USE AND HANDLING OF THESE PRODUCTS.

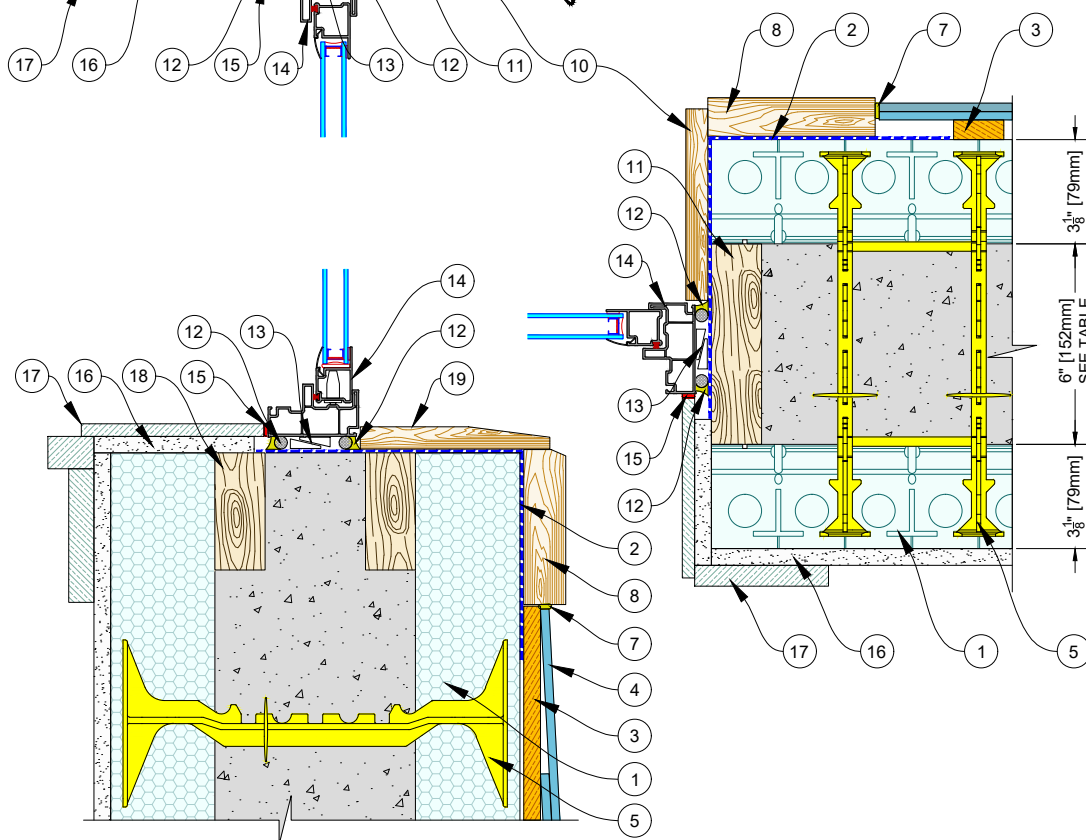
WINDOW DETAILS - HEAD, JAMB AND SILL

STUCCO FINISH - FLANGED WINDOW CENTERED, ATTACHED TO WOOD BUCK

DATE DRAWN:	2018-06-01	SCALE:	NOT TO SCALE
REVISION NO:	N/A	SHEET SIZE:	8.5" x 11" [216mm x 279mm]
REVISION DATE:	YYYY-MM-DD	APPROVED ON:	2018-06-04
DRAWN BY:	Z. PROSTRAN	APPROVED BY:	G. KUSTERMANN
			QLU-412



1.	Quad-Lock Ultra Panel - 3.125\" [79mm] Thick EPS
2.	Self Adhered Membrane (SAM) sealed to concrete. Prime all contact surfaces with water based primer. See detail QLU-425
3.	Furring Strips - Fasten to Quad-Lock Ties
4.	Lapped Siding - Fasten to Furring
5.	Quad-Lock Tie (Yellow Shown) @ 12\" [305mm] O/C Ver & Hor
6.	Starter Strip
7.	Sealant
8.	Siding Trim
9.	Metal Flashing with SAM Counter-Flashing
10.	Trim
11.	Pressure Treated Internal Wood Buck
12.	Backer Rod and Sealant - Between Frame & SAM
13.	Shims
14.	Boxed Window Frame
15.	Sealant for Interior Window Trim
16.	Interior Wall Finish (Gypsum Wallboard or eq.)
17.	Interior Window Trim
18.	Double 2x4 [38mm x 89mm] P.T. Wood Buck with Space for Concrete Pour
19.	Exterior Sill Trim



QUAD-LOCK R-28 [U-0.21] WALL	
TIE NAME	CONCRETE CORE THICKNESS
BLUE TIE = 4\" [102mm]	
YELLOW TIE = 6\" [152mm]	
GREEN TIE = 8\" [203mm]	
RED TIE = 10\" [254mm]	
BROWN TIE = 12\" [305mm]	
BLACK TIE + XT = 14\" [356mm]	
ETC.	

QUAD-LOCK®
Building Systems

Quad-Lock Building Systems
7398 - 132nd Street
Surrey, BC V3W 4M7
Canada
888.711.5625 - Toll Free
604.590.3111
604.590.8412 - fax
www.quadlock.com

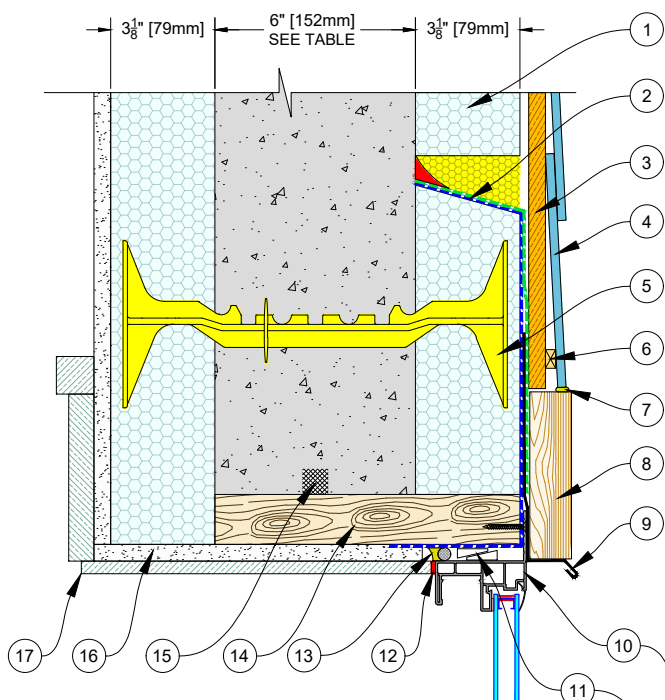
IT IS THE RESPONSIBILITY OF THE USER TO COMPLY WITH ALL APPLICABLE REGULATIONS AND BUILDING CODE REQUIREMENTS CONCERNING THE USE OF THESE PRODUCTS.

IT IS FURTHER THE RESPONSIBILITY OF THE USER TO RESEARCH AND UNDERSTAND SAFE METHODS OF USE AND HANDLING OF THESE PRODUCTS.

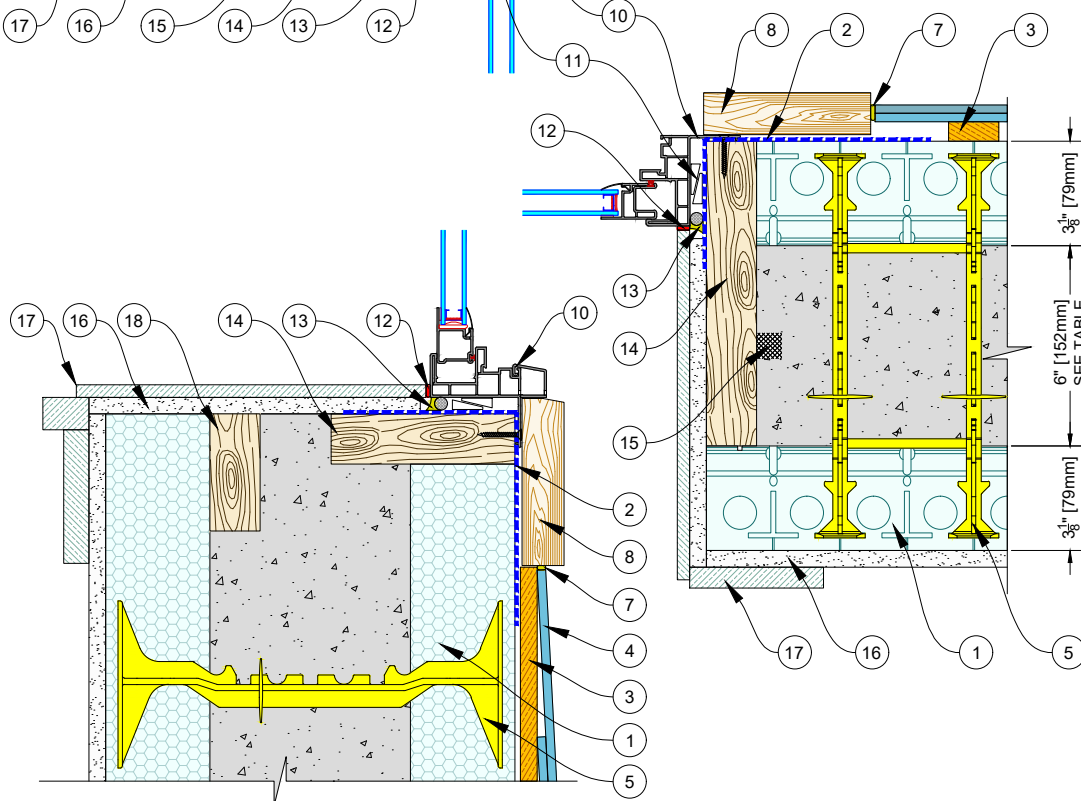
WINDOW DETAILS - HEAD, JAMB AND SILL

SIDING FINISH - BOXED WINDOW CENTERED - ATTACHED TO WOOD BUCK

DATE DRAWN:	2018-06-01	SCALE:	NOT TO SCALE
REVISION NO:	N/A	SHEET SIZE:	8.5" x 11" [216mm x 279mm]
REVISION DATE:	YYYY-MM-DD	APPROVED ON:	2018-06-04
DRAWN BY:	Z. PROSTRAN	APPROVED BY:	G. KUSTERMANN
			QLU-413



1. Quad-Lock Ultra Panel - 3.125" [79mm] Thick EPS
2. Self Adhered Membrane (SAM) sealed to concrete. Prime all contact surfaces with water based primer. See detail QLU-425
3. Furring Strips - Fasten to Quad-Lock Ties
4. Lapped Siding - Fasten to Furring
5. Quad-Lock Tie (Yellow Shown) @ 12" [305mm] O/C Ver & Hor
6. Starter Strip
7. Sealant
8. Siding Trim
9. Metal Flashing with SAM Counter-Flashing on top sealed to concrete
10. Flanged Window Frame
11. Shims
12. Sealant for Interior Window Trim
13. Backer Rod and Sealant - Between Frame & SAM
14. Hybrid Buck - Pressure Treated 2x
15. Poly-Urethane Tape Installed on Concrete Face of Wood Buck (Head & Jambs) Prior to Pour. This Tape is Not Required for Internal Bucks
16. Interior Wall Finish (Gypsum Wallboard or eq.)
17. Interior Window Trim
18. P.T. Wood Buck with Space for Concrete Pour



QUAD-LOCK R-28 [U-0.21] WALL	
TIE NAME	CONCRETE CORE THICKNESS
BLUE TIE	= 4" [102mm]
YELLOW TIE	= 6" [152mm]
GREEN TIE	= 8" [203mm]
RED TIE	= 10" [254mm]
BROWN TIE	= 12" [305mm]
BLACK TIE + XT	= 14" [356mm]
ETC.	

QUAD-LOCK®
Building Systems

Quad-Lock Building Systems
7398 - 132nd Street
Surrey, BC V3W 4M7
Canada
888.711.5625 - Toll Free
604.590.3111
604.590.8412 - fax
www.quadlock.com

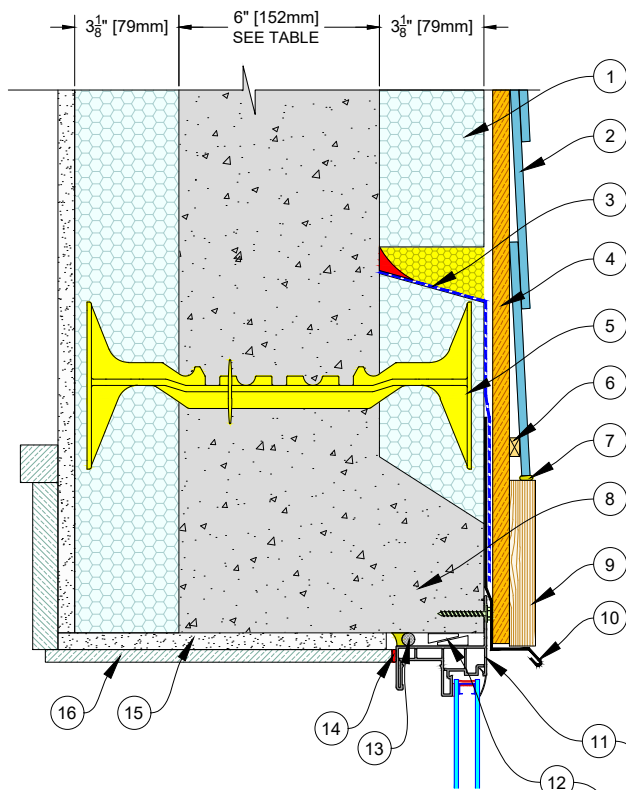
IT IS THE RESPONSIBILITY OF THE USER TO COMPLY WITH ALL APPLICABLE REGULATIONS AND BUILDING CODE REQUIREMENTS CONCERNING THE USE OF THESE PRODUCTS.

IT IS FURTHER THE RESPONSIBILITY OF THE USER TO RESEARCH AND UNDERSTAND SAFE METHODS OF USE AND HANDLING OF THESE PRODUCTS.

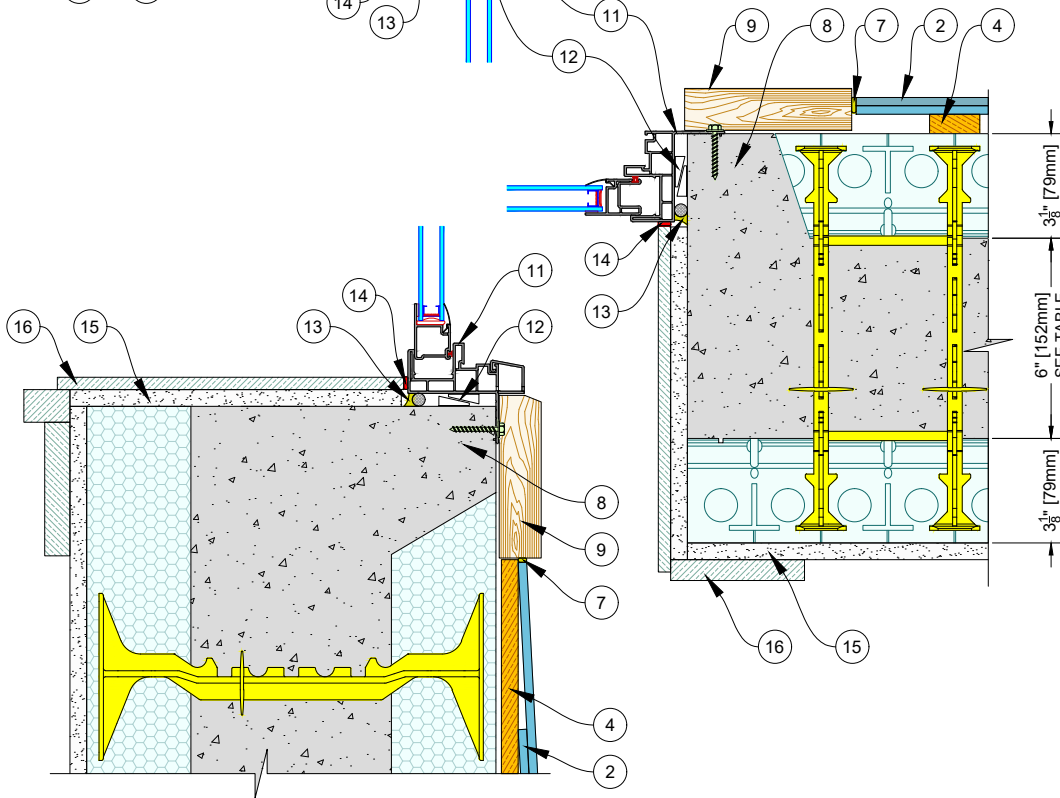
WINDOW DETAILS - HEAD, JAMB AND SILL

SIDING FINISH - FLANGED WINDOW FLUSHED - ATTACHED TO WOOD BUCK

DATE DRAWN:	2018-06-01	SCALE:	NOT TO SCALE
REVISION NO:	N/A	SHEET SIZE:	8.5" x 11" [216mm x 279mm]
REVISION DATE:	YYYY-MM-DD	APPROVED ON:	2018-06-04
DRAWN BY:	Z. PROSTRAN	APPROVED BY:	G. KUSTERMANN
			QLU-414



1.	Quad-Lock Ultra Panel - 3.125\" [79mm] Thick EPS
2.	Lapped Siding Fasten to Furring
3.	Self Adhered Membrane (SAM) sealed to concrete. Prime all contact surfaces with water based primer. See detail QLU-425
4.	Furring Strips - Fasten to Quad-Lock Ties
5.	Quad-Lock Tie (Yellow Shown) @ 12\" [305mm] O/C Ver & Hor
6.	Starter Strip
7.	Sealant
8.	Concrete brought out as waterproof plane. Apply water based primer on all exposed concrete surfaces (The primer must be compatible with the caulking)
9.	Siding Trim
10.	Metal Flashing
11.	Flanged Window Frame
12.	Shims
13.	Backer Rod and Sealant
14.	Sealant for Interior Window Trim
15.	Interior Wall Finish (Gypsum Wallboard or eq.)
16.	Interior Window Trim



QUAD-LOCK R-28 [U-0.21] WALL	
TIE NAME	CONCRETE CORE THICKNESS
BLUE TIE = 4\" [102mm]	
YELLOW TIE = 6\" [152mm]	
GREEN TIE = 8\" [203mm]	
RED TIE = 10\" [254mm]	
BROWN TIE = 12\" [305mm]	
BLACK TIE + XT = 14\" [356mm]	
ETC.	

QUAD-LOCK®
Building Systems

Quad-Lock Building Systems
7398 - 132nd Street
Surrey, BC V3W 4M7
Canada
888.711.5625 - Toll Free
604.590.3111
604.590.8412 - fax
www.quadlock.com

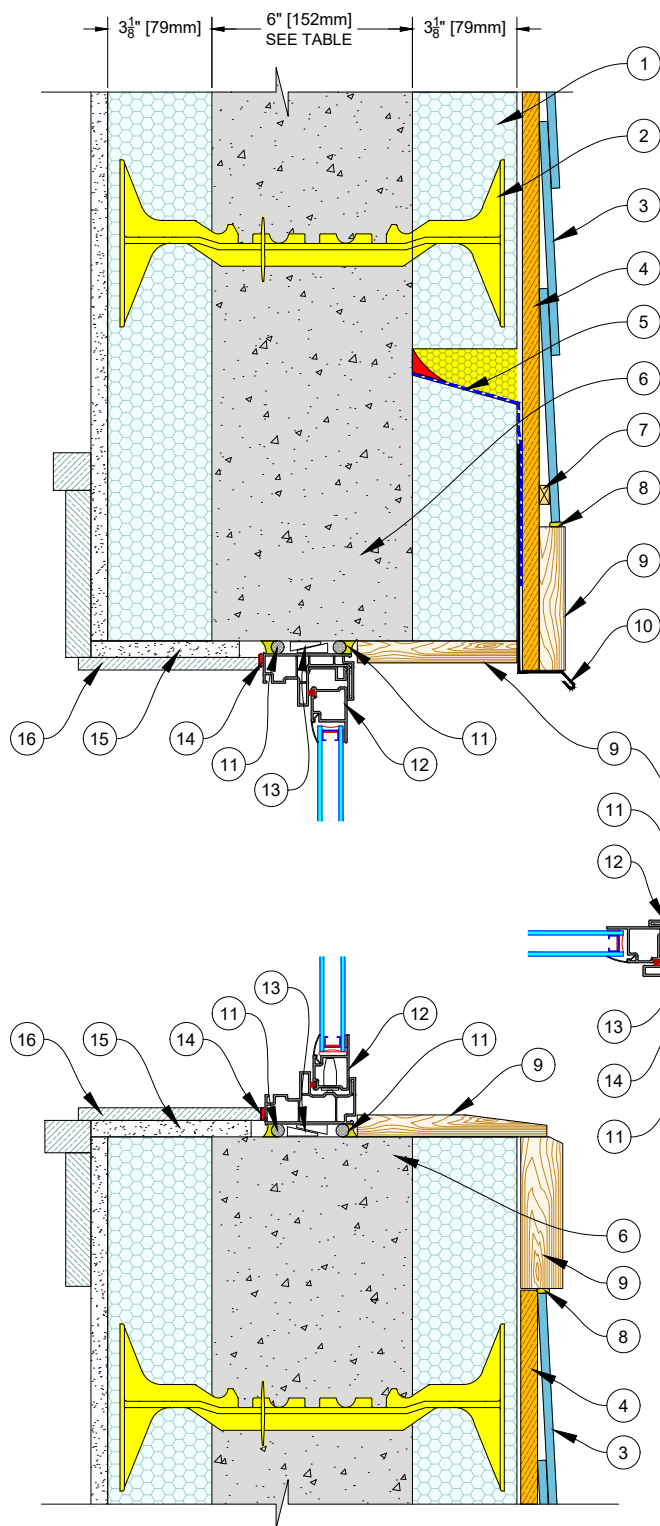
IT IS THE RESPONSIBILITY OF THE USER TO COMPLY WITH ALL APPLICABLE REGULATIONS AND BUILDING CODE REQUIREMENTS CONCERNING THE USE OF THESE PRODUCTS.

IT IS FURTHER THE RESPONSIBILITY OF THE USER TO RESEARCH AND UNDERSTAND SAFE METHODS OF USE AND HANDLING OF THESE PRODUCTS.

WINDOW DETAILS - HEAD, JAMB AND SILL

SIDING FINISH - FLANGED WINDOW FLUSHED - ATTACHED TO CONCRETE

DATE DRAWN:	2018-06-01	SCALE:	NOT TO SCALE
REVISION NO:	N/A	SHEET SIZE:	8.5" x 11" [216mm x 279mm]
REVISION DATE:	YYYY-MM-DD	APPROVED ON:	2018-06-04
DRAWN BY:	Z. PROSTRAN	APPROVED BY:	G. KUSTERMANN
			QLU-415



1.	Quad-Lock Ultra Panel - 3.125\" [79mm] Thick EPS
2.	Quad-Lock Tie (Yellow Shown) @ 12\" [305mm] O/C Ver & Hor
3.	Lapped Siding - Fasten to Furring
4.	Furring Strips - Fasten to Quad-Lock Ties
5.	Self Adhered Membrane (SAM) sealed to concrete. Prime all contact surfaces with water based primer. See detail QLU-425
6.	Apply water based primer on all exposed concrete surfaces (The primer must be compatible with the caulking)
7.	Starter Strip
8.	Sealant
9.	Siding Trim
10.	Metal Flashing
11.	Backer Rod and Sealant
12.	Flanged Window Frame
13.	Shims
14.	Sealant for Interior Window Trim
15.	Interior Wall Finish (Gypsum Wallboard or eq.)
16.	Interior Window Trim

QUAD-LOCK R-28 [U-0.21] WALL	
TIE NAME	CONCRETE CORE THICKNESS
BLUE TIE	= 4\" [102mm]
YELLOW TIE	= 6\" [152mm]
GREEN TIE	= 8\" [203mm]
RED TIE	= 10\" [254mm]
BROWN TIE	= 12\" [305mm]
BLACK TIE + XT	= 14\" [356mm]
ETC.	

QUAD-LOCK®
Building Systems

Quad-Lock Building Systems
7398 - 132nd Street
Surrey, BC V3W 4M7
Canada
888.711.5625 - Toll Free
604.590.3111
604.590.8412 - fax
www.quadlock.com

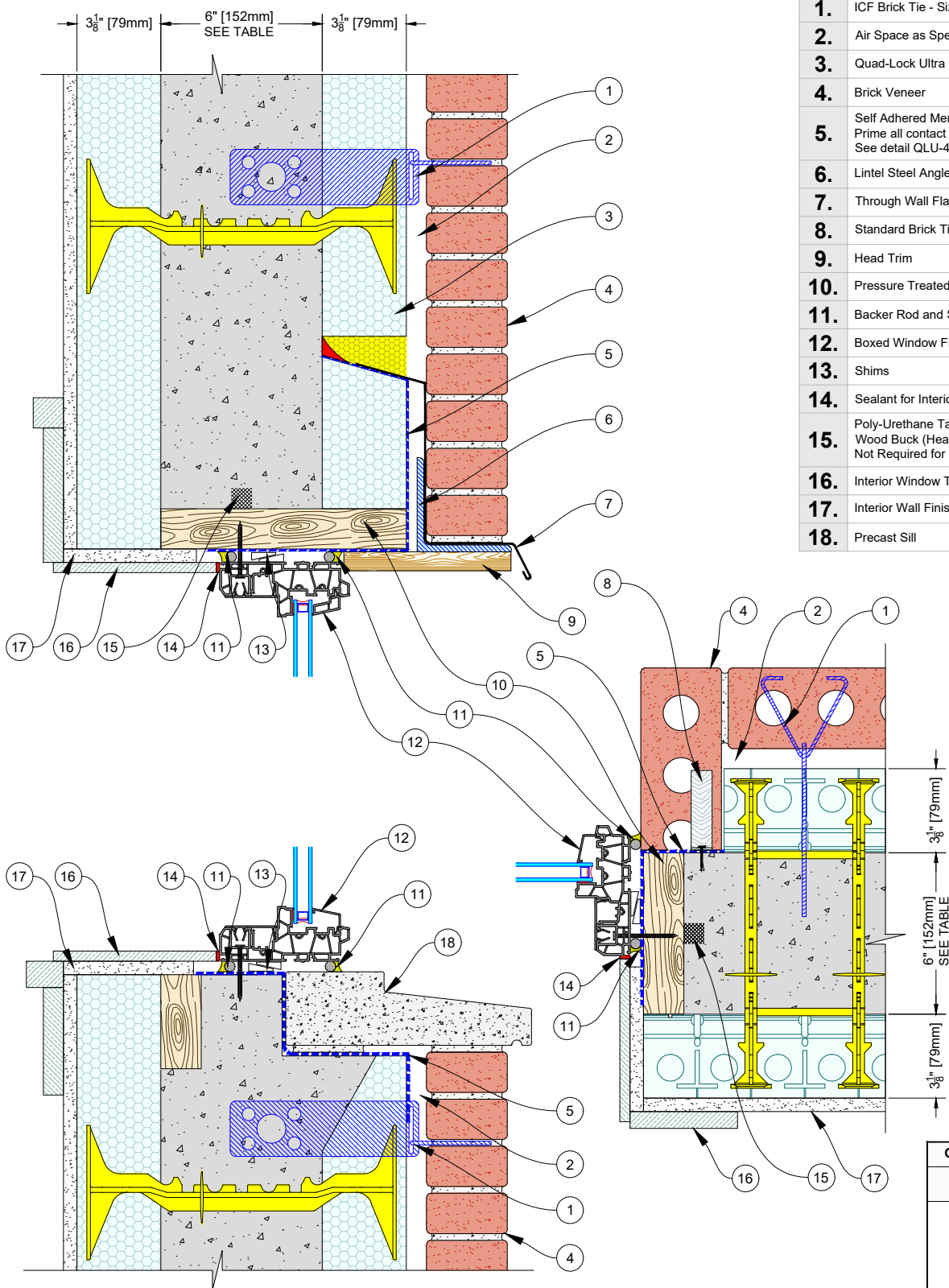
IT IS THE RESPONSIBILITY OF THE USER TO COMPLY WITH ALL APPLICABLE REGULATIONS AND BUILDING CODE REQUIREMENTS CONCERNING THE USE OF THESE PRODUCTS.

IT IS FURTHER THE RESPONSIBILITY OF THE USER TO RESEARCH AND UNDERSTAND SAFE METHODS OF USE AND HANDLING OF THESE PRODUCTS.

WINDOW DETAILS - HEAD, JAMB AND SILL

SIDING FINISH - BOXED WINDOW CENTERED - ATTACHED TO CONCRETE

DATE DRAWN:	2018-06-01	SCALE:	NOT TO SCALE
REVISION NO:	N/A	SHEET SIZE:	8.5" x 11" [216mm x 279mm]
REVISION DATE:	YYYY-MM-DD	APPROVED ON:	2018-06-04
DRAWN BY:	Z. PROSTRAN	APPROVED BY:	G. KUSTERMANN
			DRAWING NO: QLU-416



1.	ICF Brick Tie - Size and Spacing as Specified
2.	Air Space as Specified
3.	Quad-Lock Ultra Panel - 3.125" [79mm] Thick EPS
4.	Brick Veneer
5.	Self Adhered Membrane (SAM) sealed to concrete. Prime all contact surfaces with water based primer. See detail QLU-425
6.	Lintel Steel Angle as Specified
7.	Through Wall Flashing as per Code or as Specified
8.	Standard Brick Tie as Specified
9.	Head Trim
10.	Pressure Treated "Hybrid" Wood Buck
11.	Backer Rod and Sealant
12.	Boxed Window Frame
13.	Shims
14.	Sealant for Interior Window Trim
15.	Poly-Urethane Tape Installed on Concrete Face of Wood Buck (Head & Jamb) Prior to Pour. This Tape is Not Required for Internal Bucks
16.	Interior Window Trim
17.	Interior Wall Finish (Gypsum Wallboard or eq.)
18.	Precast Sill

QUAD-LOCK R-28 [U-0.21] WALL	
TIE NAME	CONCRETE CORE THICKNESS
BLUE TIE	= 4" [102mm]
YELLOW TIE	= 6" [152mm]
GREEN TIE	= 8" [203mm]
RED TIE	= 10" [254mm]
BROWN TIE	= 12" [305mm]
BLACK TIE + XT	= 14" [356mm]
ETC.	

QUAD-LOCK®
Building Systems

Quad-Lock Building Systems
7398 - 132nd Street
Surrey, BC V3W 4M7
Canada
888.711.5625 - Toll Free
604.590.3111
604.590.8412 - fax
www.quadlock.com

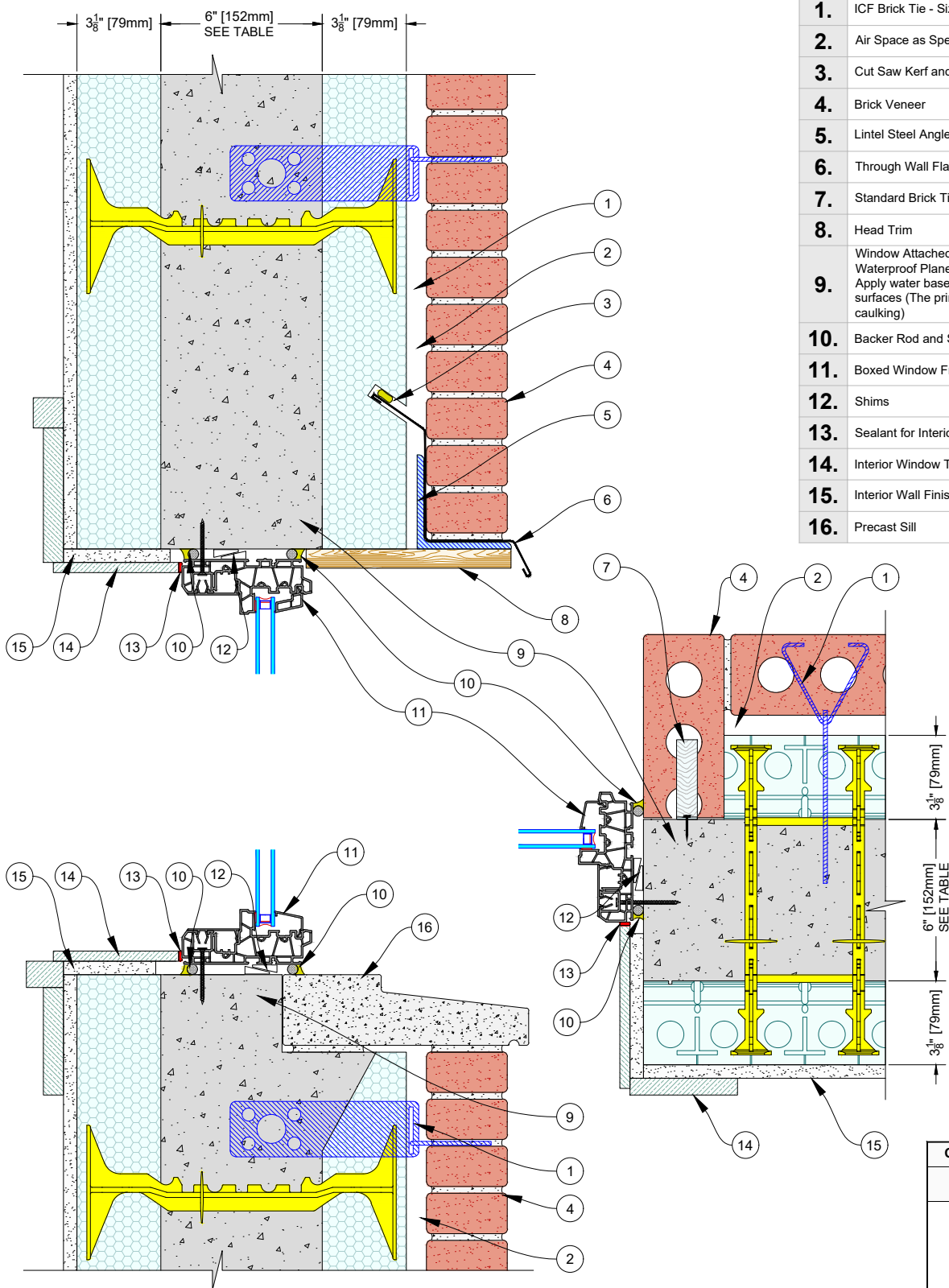
IT IS THE RESPONSIBILITY OF THE USER TO COMPLY WITH ALL APPLICABLE REGULATIONS AND BUILDING CODE REQUIREMENTS CONCERNING THE USE OF THESE PRODUCTS.

IT IS FURTHER THE RESPONSIBILITY OF THE USER TO RESEARCH AND UNDERSTAND SAFE METHODS OF USE AND HANDLING OF THESE PRODUCTS.

WINDOW DETAILS - HEAD, JAMB AND SILL

BRICK FINISH - BOXED WINDOW CENTERED - ATTACHED TO WOOD BUCK

DATE DRAWN:	2018-06-01	SCALE:	NOT TO SCALE
REVISION NO:	N/A	SHEET SIZE:	8.5" x 11" [216mm x 279mm]
REVISION DATE:	YYYY-MM-DD	APPROVED ON:	2018-06-04
DRAWN BY:	Z. PROSTRAN	APPROVED BY:	G. KUSTERMAN
			QLU-417



1. ICF Brick Tie - Size and Spacing as Specified
2. Air Space as Specified
3. Cut Saw Kerf and Insert Flashing with Sealant
4. Brick Veneer
5. Lintel Steel Angle as Specified
6. Through Wall Flashing as per Code or as Specified
7. Standard Brick Tie as Specified
8. Head Trim
9. Window Attached Directly to Concrete Which Acts as Waterproof Plane
Apply water based primer on all exposed concrete surfaces (The primer must be compatible with the caulking)
10. Backer Rod and Sealant
11. Boxed Window Frame
12. Shims
13. Sealant for Interior Window Trim
14. Interior Window Trim
15. Interior Wall Finish (Gypsum Wallboard or eq.)
16. Precast Sill

QUAD-LOCK R-28 [U-0.21] WALL	
TIE NAME	CONCRETE CORE THICKNESS
BLUE TIE = 4" [102mm]	
YELLOW TIE = 6" [152mm]	
GREEN TIE = 8" [203mm]	
RED TIE = 10" [254mm]	
BROWN TIE = 12" [305mm]	
BLACK TIE + XT = 14" [356mm]	
ETC.	

QUAD-LOCK®
Building Systems

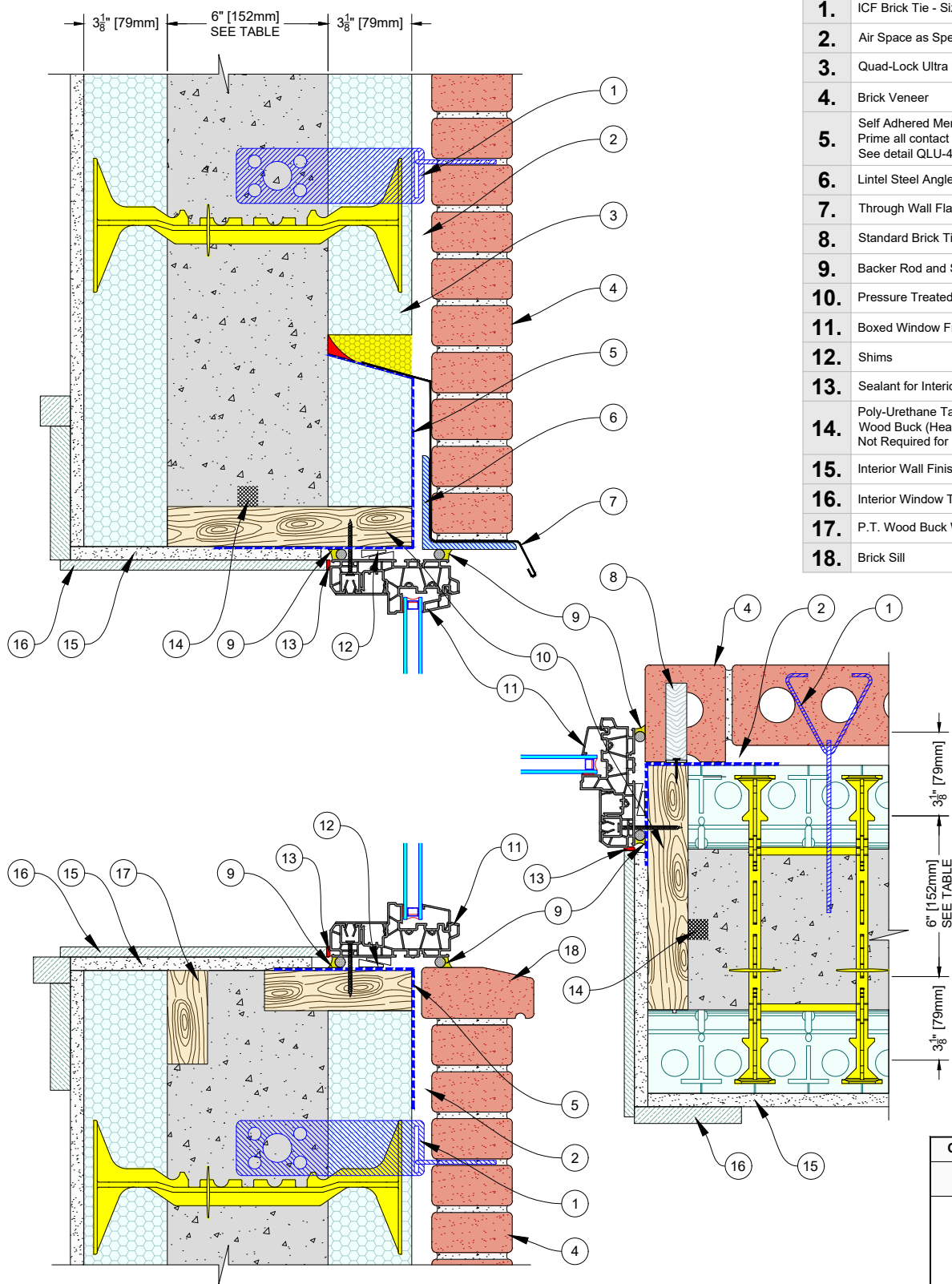
Quad-Lock Building Systems
7398 - 132nd Street
Surrey, BC V3W 4M7
Canada
888.711.5625 - Toll Free
604.590.3111
604.590.8412 - fax
www.quadlock.com

IT IS THE RESPONSIBILITY OF THE USER TO COMPLY WITH ALL APPLICABLE REGULATIONS AND BUILDING CODE REQUIREMENTS CONCERNING THE USE OF THESE PRODUCTS.
IT IS FURTHER THE RESPONSIBILITY OF THE USER TO RESEARCH AND UNDERSTAND SAFE METHODS OF USE AND HANDLING OF THESE PRODUCTS.

WINDOW DETAILS - HEAD, JAMB AND SILL

BRICK FINISH - BOXED WINDOW CENTERED - ATTACHED TO CONCRETE

DATE DRAWN:	2018-06-01	SCALE:	NOT TO SCALE
REVISION NO:	N/A	SHEET SIZE:	8.5" x 11" [216mm x 279mm]
REVISION DATE:	YYYY-MM-DD	APPROVED ON:	2018-06-04
DRAWN BY:	Z. PROSTRAN	APPROVED BY:	G. KUSTERMANN
			QLU-418



1.	ICF Brick Tie - Size and Spacing as Specified
2.	Air Space as Specified
3.	Quad-Lock Ultra Panel - 3.125\" [79mm] Thick EPS
4.	Brick Veneer
5.	Self Adhered Membrane (SAM) sealed to concrete. Prime all contact surfaces with water based primer. See detail QLU-425
6.	Lintel Steel Angle as Specified
7.	Through Wall Flashing as per Code or as Specified
8.	Standard Brick Tie as Specified
9.	Backer Rod and Sealant
10.	Pressure Treated "Hybrid" Wood Buck
11.	Boxed Window Frame
12.	Shims
13.	Sealant for Interior Window Trim
14.	Poly-Urethane Tape Installed on Concrete Face of Wood Buck (Head & Jamb) Prior to Pour. This Tape is Not Required for Internal Bucks
15.	Interior Wall Finish (Gypsum Wallboard or eq.)
16.	Interior Window Trim
17.	P.T. Wood Buck With Space for Concrete Pour
18.	Brick Sill

QUAD-LOCK R-28 [U-0.21] WALL	
TIE NAME	CONCRETE CORE THICKNESS
BLUE TIE	= 4\" [102mm]
YELLOW TIE	= 6\" [152mm]
GREEN TIE	= 8\" [203mm]
RED TIE	= 10\" [254mm]
BROWN TIE	= 12\" [305mm]
BLACK TIE + XT	= 14\" [356mm]
ETC.	

QUAD-LOCK®
Building Systems

Quad-Lock Building Systems
7398 - 132nd Street
Surrey, BC V3W 4M7
Canada
888.711.5625 - Toll Free
604.590.3111
604.590.8412 - fax
www.quadlock.com

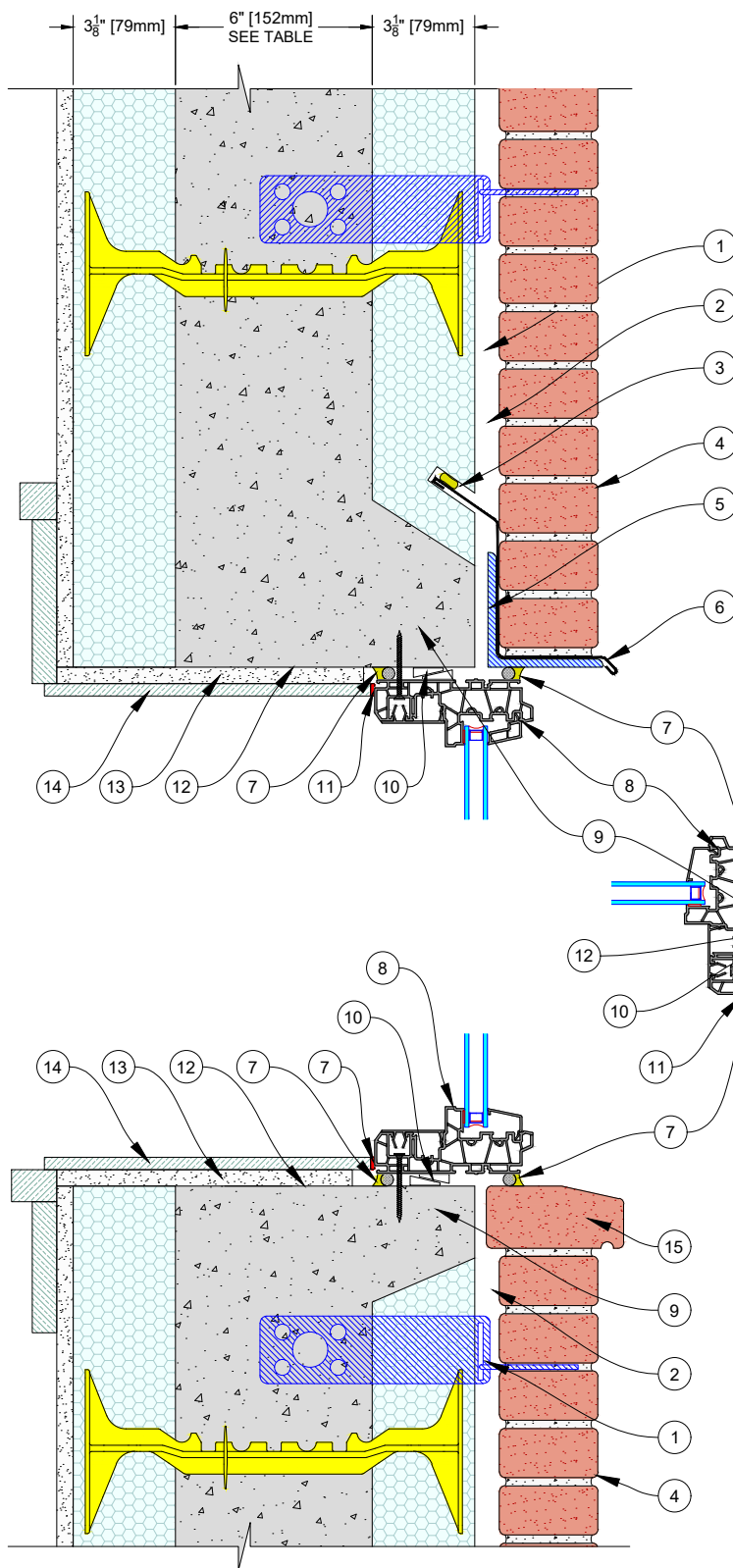
IT IS THE RESPONSIBILITY OF THE USER TO COMPLY WITH ALL APPLICABLE REGULATIONS AND BUILDING CODE REQUIREMENTS CONCERNING THE USE OF THESE PRODUCTS.

IT IS FURTHER THE RESPONSIBILITY OF THE USER TO RESEARCH AND UNDERSTAND SAFE METHODS OF USE AND HANDLING OF THESE PRODUCTS.

WINDOW DETAILS - HEAD, JAMB AND SILL

BRICK FINISH - BOXED WINDOW FLUSHED - ATTACHED TO WOOD BUCK

DATE DRAWN:	2018-06-01	SCALE:	NOT TO SCALE
REVISION NO:	N/A	SHEET SIZE:	8.5" x 11" [216mm x 279mm]
REVISION DATE:	YYYY-MM-DD	APPROVED ON:	2018-06-04
DRAWN BY:	Z. PROSTRAN	APPROVED BY:	G. KUSTERMANN
			QLU-419



1.	ICF Brick Tie - Size and Spacing as Specified
2.	Air Space as Specified
3.	Cut Saw Kerf and Insert Flashing with Sealant
4.	Brick Veneer
5.	Lintel Steel Angle as Specified
6.	Through Wall Flashing as per Code or as Specified
7.	Backer Rod and Sealant
8.	Boxed Window Frame
9.	Window Attached Directly to Concrete Which Acts as Waterproof Plane (see 12 below)
10.	Shims
11.	Sealant for Interior Window Trim
12.	Apply water based primer on all exposed concrete surfaces (The primer must be compatible with the caulking)
13.	Interior Wall Finish (Gypsum Wallboard or eq.)
14.	Interior Window Trim
15.	Brick Sill
16.	Standard Brick Tie as Specified

QUAD-LOCK R-28 [U-0.21] WALL	
TIE NAME	CONCRETE CORE THICKNESS
BLUE TIE = 4" [102mm]	
YELLOW TIE = 6" [152mm]	
GREEN TIE = 8" [203mm]	
RED TIE = 10" [254mm]	
BROWN TIE = 12" [305mm]	
BLACK TIE + XT = 14" [356mm]	
ETC.	

QUAD-LOCK®
Building Systems

Quad-Lock Building Systems
7398 - 132nd Street
Surrey, BC V3W 4M7
Canada
888.711.5625 - Toll Free
604.590.3111
604.590.8412 - fax
www.quadlock.com

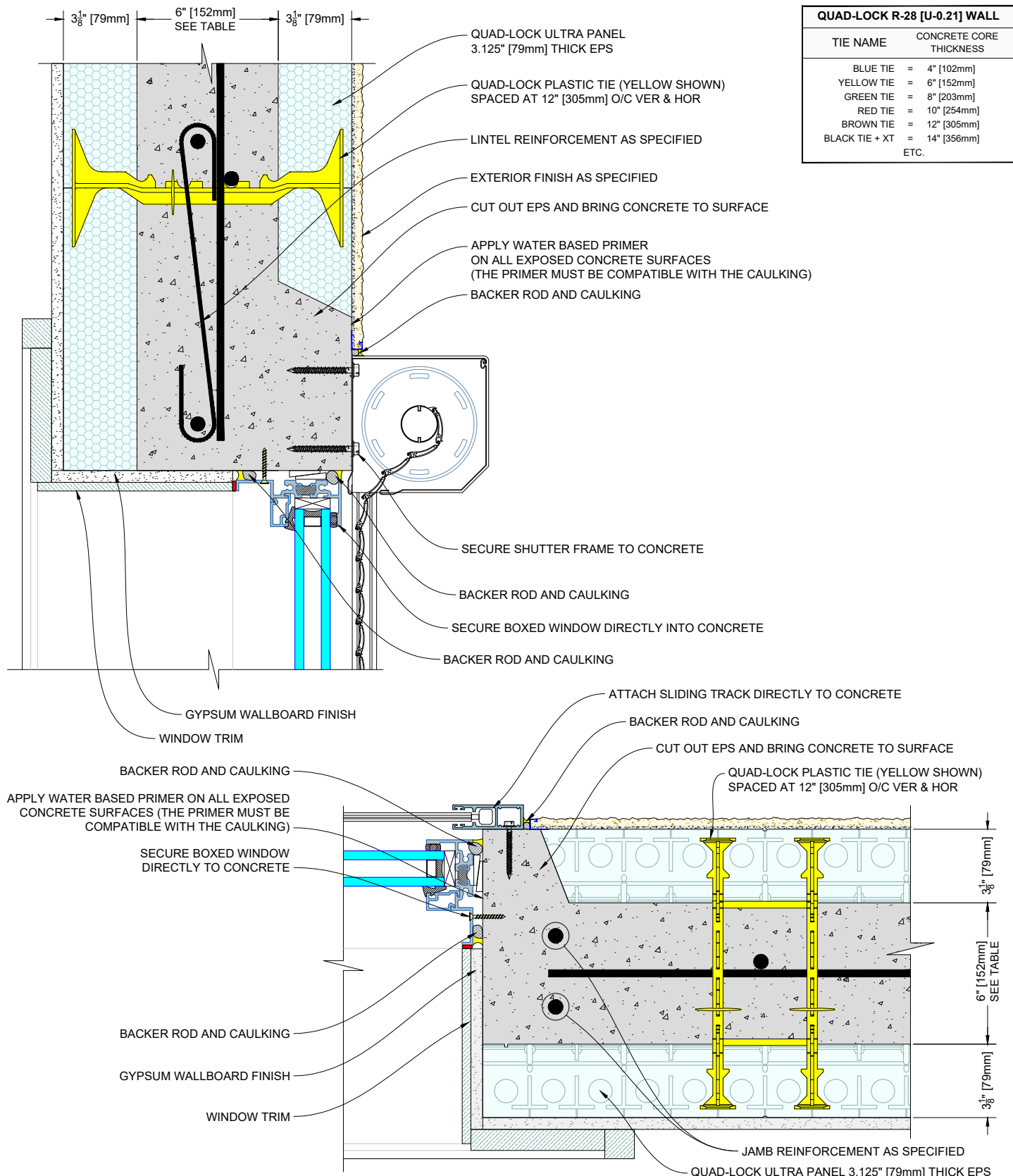
IT IS THE RESPONSIBILITY OF THE USER TO COMPLY WITH ALL APPLICABLE REGULATIONS AND BUILDING CODE REQUIREMENTS CONCERNING THE USE OF THESE PRODUCTS.

IT IS FURTHER THE RESPONSIBILITY OF THE USER TO RESEARCH AND UNDERSTAND SAFE METHODS OF USE AND HANDLING OF THESE PRODUCTS.

WINDOW DETAILS - HEAD, JAMB AND SILL

BRICK FINISH - BOXED WINDOW FLUSHED - ATTACHED TO CONCRETE

DATE DRAWN:	2018-06-01	SCALE:	NOT TO SCALE
REVISION NO.:	N/A	SHEET SIZE:	8.5" x 11" [216mm x 279mm]
REVISION DATE:	YYYY-MM-DD	APPROVED ON:	2018-06-04
DRAWN BY:	Z. PROSTRAN	APPROVED BY:	G. KUSTERMANN
			QLU-420



QUAD-LOCK®
Building Systems

Quad-Lock Building Systems
7398 - 132nd Street
Surrey, BC V3W 4M7
Canada
888.711.5625 - Toll Free
604.590.3111
604.590.8412 - fax
www.quadlock.com

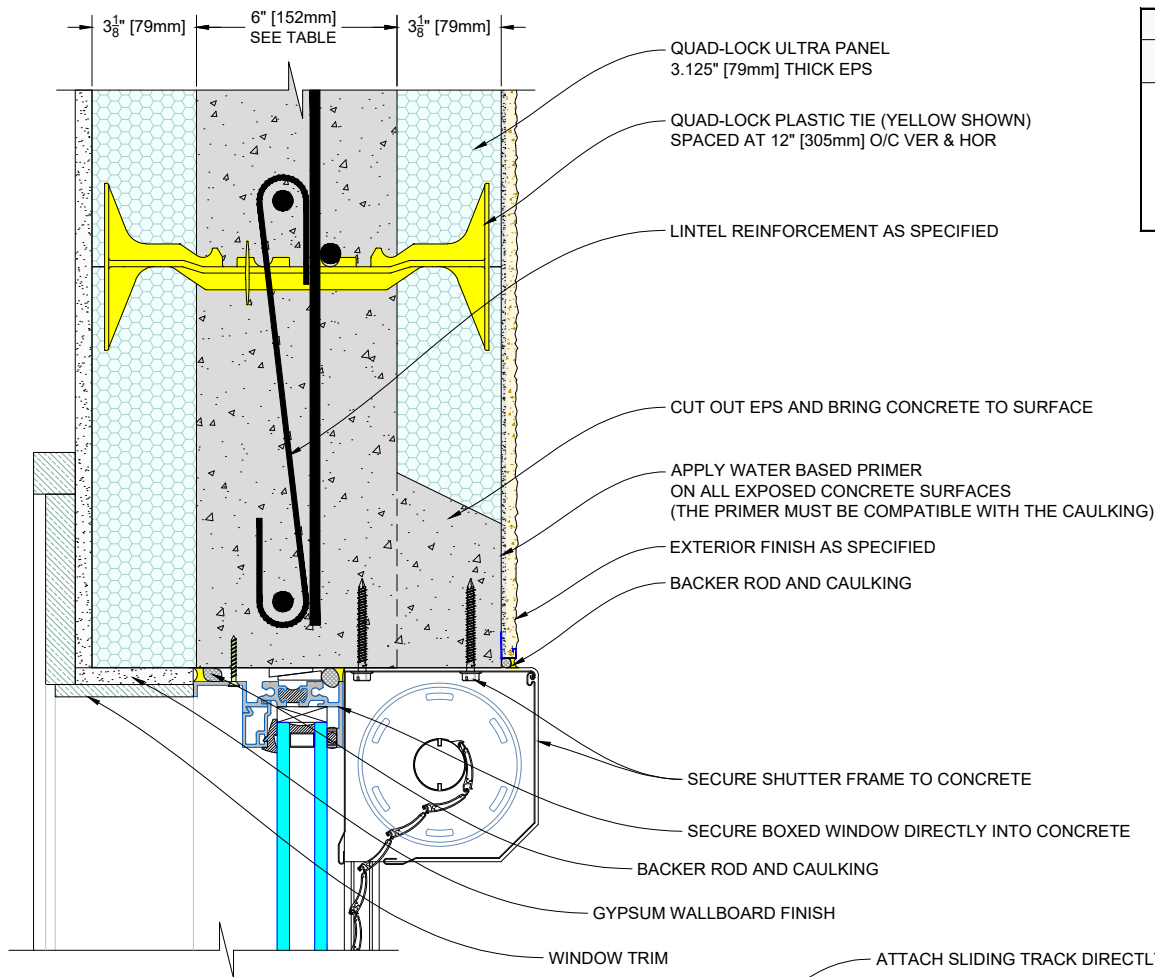
IT IS THE RESPONSIBILITY OF THE USER TO COMPLY WITH ALL APPLICABLE REGULATIONS AND BUILDING CODE REQUIREMENTS CONCERNING THE USE OF THESE PRODUCTS.

IT IS FURTHER THE RESPONSIBILITY OF THE USER TO RESEARCH AND UNDERSTAND SAFE METHODS OF USE AND HANDLING OF THESE PRODUCTS.

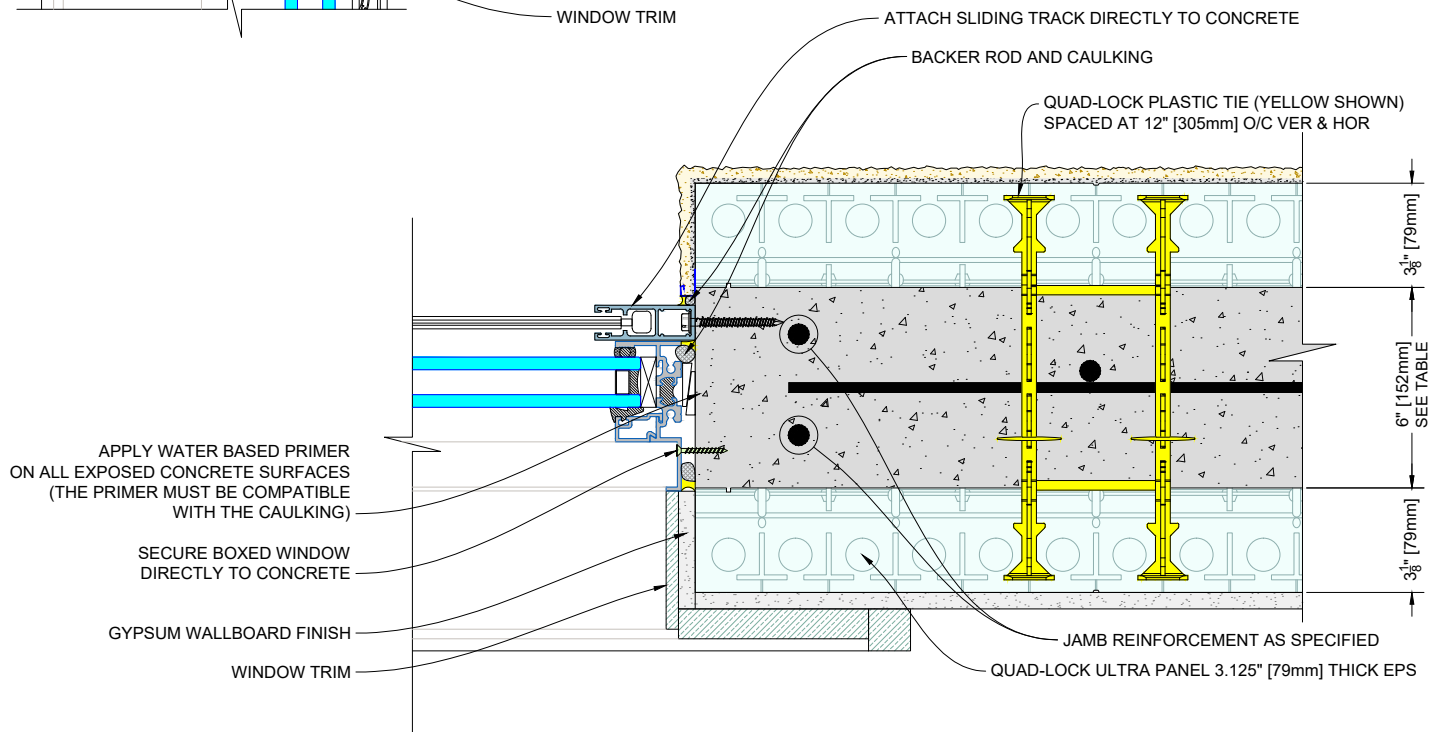
WINDOW DETAILS - HEAD AND JAMB

SHUTTER SYSTEM ON OUTSIDE OF WALL

DATE DRAWN:	2018-06-01	SCALE:	NOT TO SCALE
REVISION NO:	N/A	SHEET SIZE:	8.5" x 11" [216mm x 279mm]
REVISION DATE:	YYYY-MM-DD	APPROVED ON:	2018-06-04
DRAWN BY:	Z. PROSTRAN	APPROVED BY:	G. KUSTERMANN
			DRAWING NO: QLU-421



QUAD-LOCK R-28 [U-0.21] WALL	
TIE NAME	CONCRETE CORE THICKNESS
BLUE TIE	= 4" [102mm]
YELLOW TIE	= 6" [152mm]
GREEN TIE	= 8" [203mm]
RED TIE	= 10" [254mm]
BROWN TIE	= 12" [305mm]
BLACK TIE + XT	= 14" [356mm]
ETC.	



QUAD-LOCK®
Building Systems

Quad-Lock Building Systems
7398 - 132nd Street
Surrey, BC V3W 4M7
Canada
888.711.5625 - Toll Free
604.590.3111
604.590.8412 - fax
www.quadlock.com

IT IS THE RESPONSIBILITY OF THE USER TO COMPLY WITH ALL APPLICABLE REGULATIONS AND BUILDING CODE REQUIREMENTS CONCERNING THE USE OF THESE PRODUCTS.

IT IS FURTHER THE RESPONSIBILITY OF THE USER TO RESEARCH AND UNDERSTAND SAFE METHODS OF USE AND HANDLING OF THESE PRODUCTS.

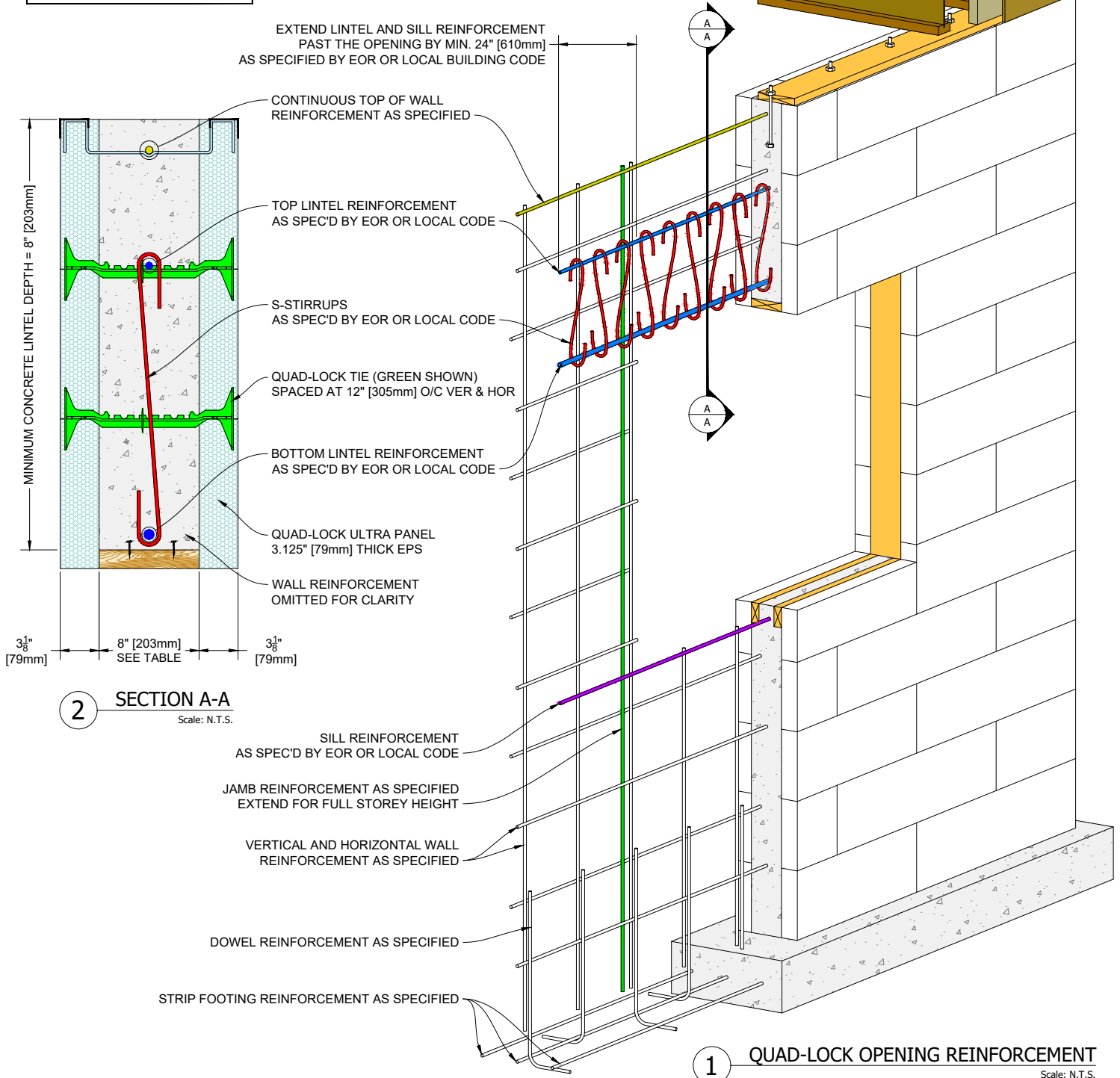
WINDOW DETAILS - HEAD AND JAMB


SHUTTER SYSTEM RECESSED IN OPENING

DATE DRAWN:	2018-06-01	SCALE:	NOT TO SCALE
REVISION NO:	N/A	SHEET SIZE:	8.5" x 11" [216mm x 279mm]
REVISION DATE:	YYYY-MM-DD	APPROVED ON:	2018-06-04
DRAWN BY:	Z. PROSTRAN	APPROVED BY:	G. KUSTERMANN
			DRAWING NO:
			QLU-422

QUAD-LOCK R-28 [U-0.21] WALL

TIE NAME	CONCRETE CORE THICKNESS
BLUE TIE = 4" [102mm]	
YELLOW TIE = 6" [152mm]	
GREEN TIE = 8" [203mm]	
RED TIE = 10" [254mm]	
BROWN TIE = 12" [305mm]	
BLACK TIE + XT = 14" [356mm]	
ETC.	





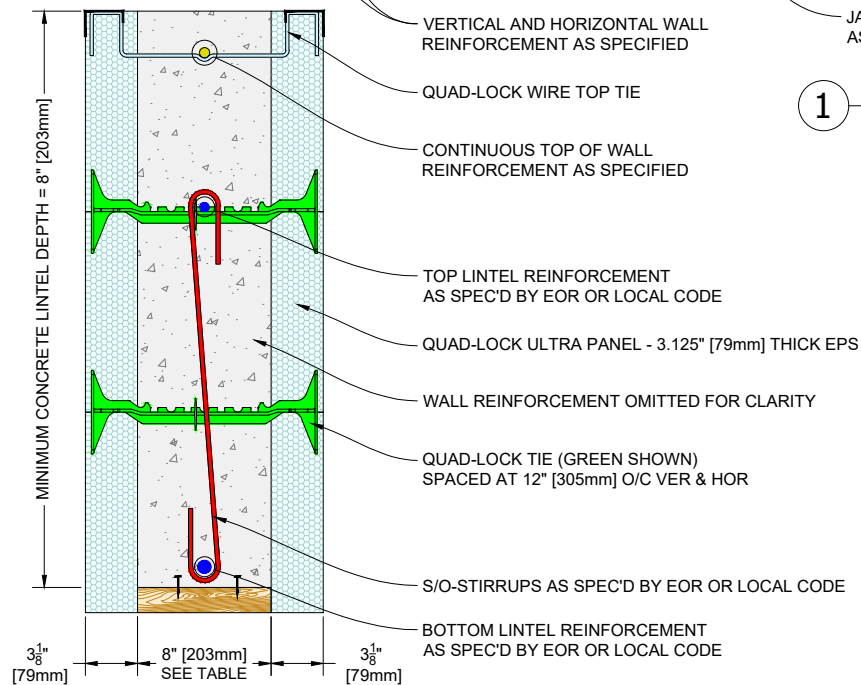
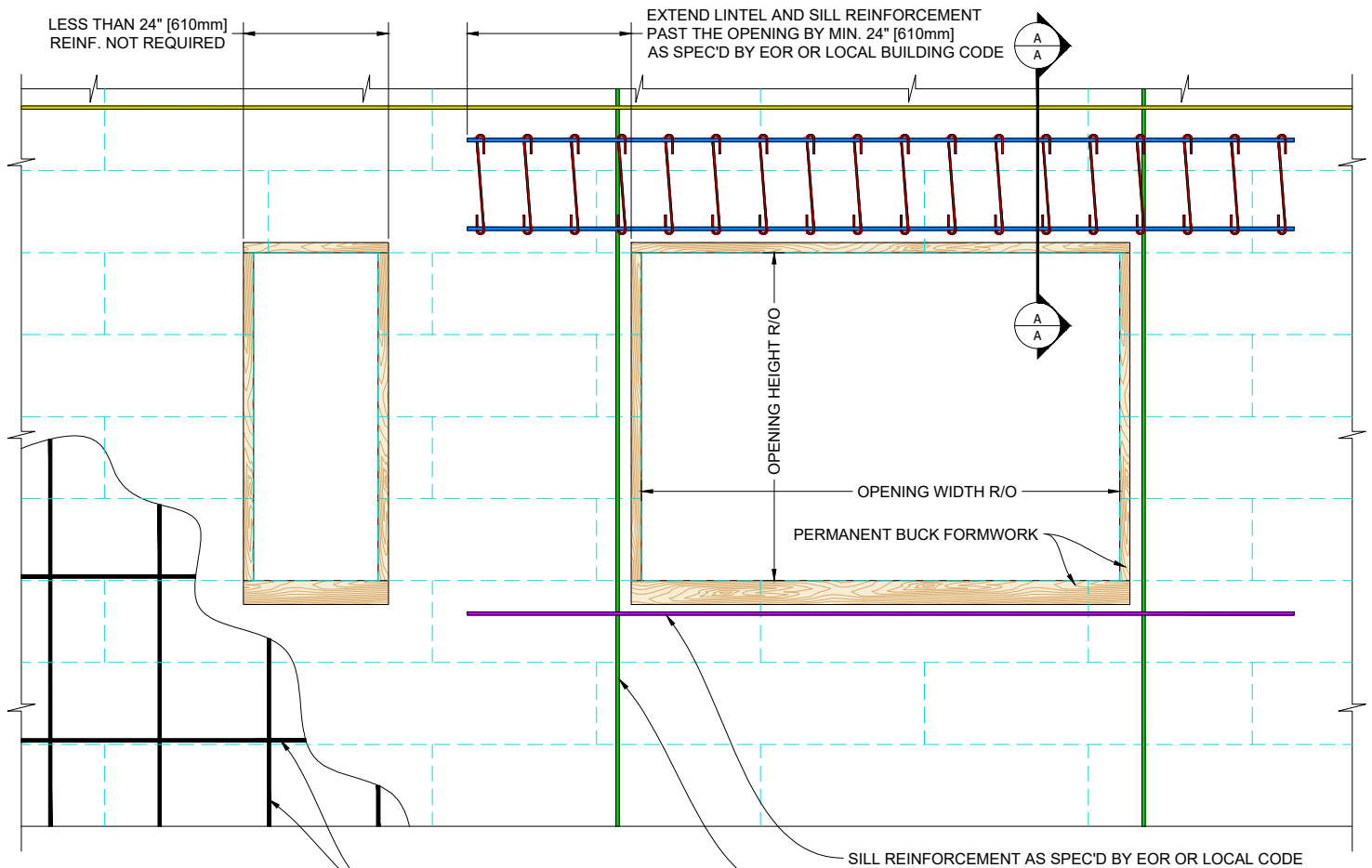
Quad-Lock Building Systems
 7398 - 132nd Street
 Surrey, BC V3W 4M7
 Canada
 888.711.5625 - Toll Free
 604.590.3111
 604.590.8412 - fax
 www.quadlock.com

IT IS THE RESPONSIBILITY OF THE USER TO COMPLY WITH ALL APPLICABLE REGULATIONS AND BUILDING CODE REQUIREMENTS CONCERNING THE USE OF THESE PRODUCTS.

IT IS FURTHER THE RESPONSIBILITY OF THE USER TO RESEARCH AND UNDERSTAND SAFE METHODS OF USE AND HANDLING OF THESE PRODUCTS.

QUAD-LOCK WALL OPENING REINFORCEMENT DETAIL

DATE DRAWN:	2018-06-01	SCALE:	NOT TO SCALE
REVISION NO:	N/A	SHEET SIZE:	8.5" x 11" [216mm x 279mm]
REVISION DATE:	YYYY-MM-DD	APPROVED ON:	2018-06-04
DRAWN BY:	Z. PROSTRAN	APPROVED BY:	G. KUSTERMANN
			DRAWING NO: QLU-423



2 SECTION A-A
Scale: N.T.S.

1 QUAD-LOCK OPENING REINFORCEMENT
Scale: N.T.S.

RESIDENTIAL PRESCRIPTIVE DESIGN

USA: International Residential Code, IRC (or applicable state code)
Chapter 4 for Below Grade Construction
Chapter 6, Section R611 for Above Grade Construction

Canada: National Building Code of Canada, NBCC (or applicable provincial code)
Division B, Section 9.15 for Below Grade Construction
Division B, Section 9.20 for Above Grade Construction

QUAD-LOCK R-28 [U-0.21] WALL	
TIE NAME	CONCRETE CORE THICKNESS
BLUE TIE	= 4" [102mm]
YELLOW TIE	= 6" [152mm]
GREEN TIE	= 8" [203mm]
RED TIE	= 10" [254mm]
BROWN TIE	= 12" [305mm]
BLACK TIE + XT	= 14" [356mm]
ETC.	

QUAD-LOCK®
Building Systems

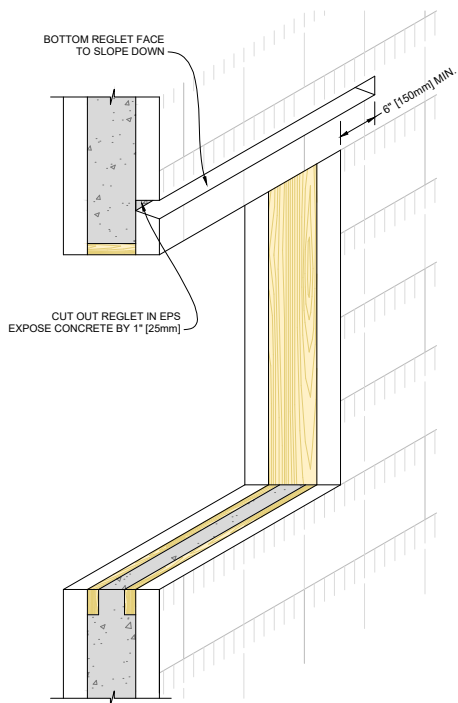
Quad-Lock Building Systems
7398 - 132nd Street
Surrey, BC V3W 4M7
Canada
888.711.5625 - Toll Free
604.590.3111
604.590.8412 - fax
www.quadlock.com

IT IS THE RESPONSIBILITY OF THE USER TO COMPLY WITH ALL APPLICABLE REGULATIONS AND BUILDING CODE REQUIREMENTS CONCERNING THE USE OF THESE PRODUCTS.

IT IS FURTHER THE RESPONSIBILITY OF THE USER TO RESEARCH AND UNDERSTAND SAFE METHODS OF USE AND HANDLING OF THESE PRODUCTS.

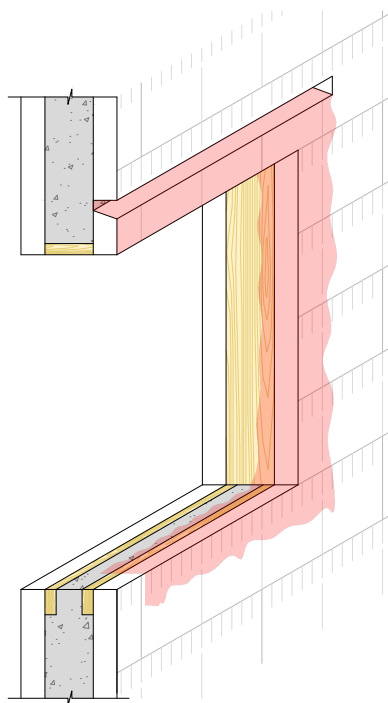
QUAD-LOCK WALL OPENING REINFORCEMENT DETAIL

DATE DRAWN:	2018-06-01	SCALE:	NOT TO SCALE
REVISION NO.:	N/A	SHEET SIZE:	8.5" x 11" [216mm x 279mm]
REVISION DATE:	YYYY-MM-DD	APPROVED ON:	2018-06-04
DRAWN BY:	Z. PROSTRAN	APPROVED BY:	G. KUSTERMANN
			QLU-424



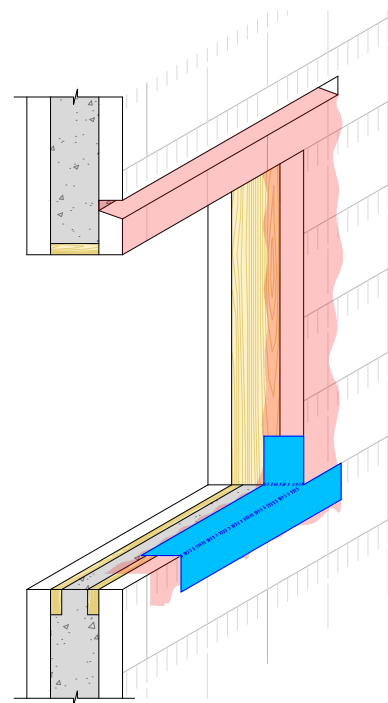
STEP 1

CUT 1" - 2" [25MM TO 50MM] TALL REGLET BACK TO CONCRETE
EXTEND REGLET BEYOND WINDOW BY MIN. 6" [150mm]



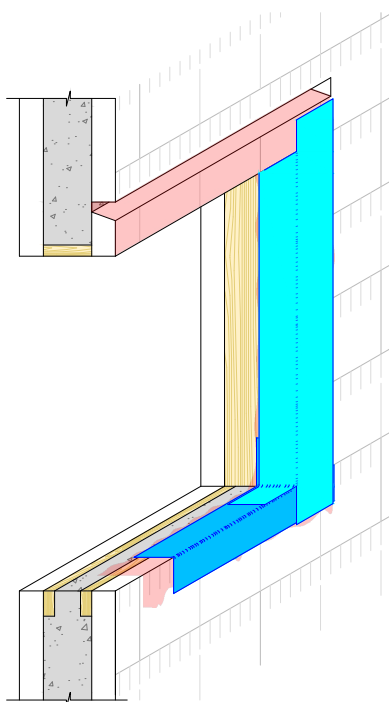
STEP 2

APPLY WATER BASED PRIMER ON ALL SURFACES TO BE FLASHED



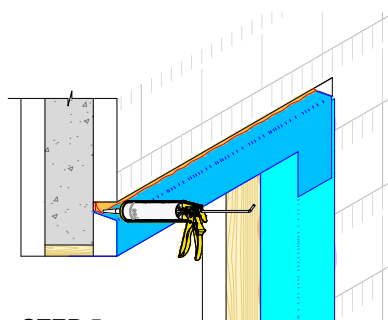
STEP 3

APPLY SELF ADHERED MEMBRANE "SAM" FLASHING AT SILL.
EXTEND MIN. 6" [150mm] ONTO WALL AND AS REQUIRED ONTO SILL.



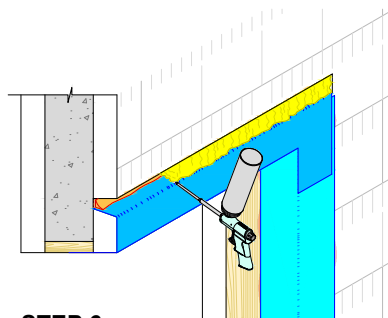
STEP 4

APPLY SAM FLASHING AT JAMB.
EXTEND MIN. 6" [150mm] ONTO WALL AND AS REQUIRED ONTO SILL.



STEP 5

APPLY SELF ADHERED MEMBRANE SAM FLASHING AT HEAD.
TURN INTO REGLET AND SECURE WITH CAULKING TO CONCRETE

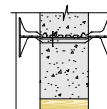


STEP 6

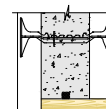
INSULATE WITH SPRAYFOAM OR REPLACE REGLET CUT OUT INSULATION

IMPORTANT NOTES:

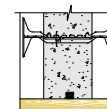
1. HYBRID AND EXTERNAL WOOD BUCKS MUST HAVE POLY-URETHANE TAPE INSTALLED ON CONCRETE FACE OF WOOD BUCK (HEAD AND JAMBS) PRIOR TO POUR. THIS TAPE IS NOT REQUIRED FOR INTERNAL BUCKS WHICH IS SHOWN IN 5 STEPS ON THIS PAGE.



INTERNAL BUCK



HYBRID BUCK



EXTERNAL BUCK

2. SAM FLASHING (CAULKED TO CONCRETE AT REGLET) IS REQUIRED FOR ALL 3 TYPES OF BUCKS SHOWN ABOVE. PRIME ALL SURFACES (WOOD, EPS & CONCRETE) WITH WATER BASED PRIMER PRIOR TO APPLYING THE SAM.
3. IF WINDOW/DOOR FRAME IS CAULKED DIRECTLY TO PRIMED CONCRETE SURFACE, SAM FLASHING CAN BE OMITTED.
4. WINDOW/DOOR FRAMES MUST BE CAULKED (WITH BACKER RODS) EITHER DIRECTLY TO PRIMED CONCRETE OR TO SAM FLASHING.
5. FLANGED WINDOWS TO HAVE ONE ADDITIONAL SAM LAYER AT HEAD OVER THE FLANGE - CAULKED TO CONCRETE

QUAD-LOCK®
Building Systems

Quad-Lock Building Systems
7398 - 132nd Street
Surrey, BC V3W 4M7
Canada
888.711.5625 - Toll Free
604.590.3111
604.590.8412 - fax
www.quadlock.com

IT IS THE RESPONSIBILITY OF THE USER TO COMPLY WITH ALL APPLICABLE REGULATIONS AND BUILDING CODE REQUIREMENTS CONCERNING THE USE OF THESE PRODUCTS.

IT IS FURTHER THE RESPONSIBILITY OF THE USER TO RESEARCH AND UNDERSTAND SAFE METHODS OF USE AND HANDLING OF THESE PRODUCTS.

OPENING FLASHING DETAIL

DATE DRAWN:	2018-06-01	SCALE:	NOT TO SCALE
REVISION NO:	N/A	SHEET SIZE:	8.5" x 11" [216mm x 279mm]
REVISION DATE:	YYYY-MM-DD	APPROVED ON:	2018-06-04
DRAWN BY:	Z. PROSTRAN	APPROVED BY:	G. KUSTERMANN
			DRAWING NO:
			QLU-425