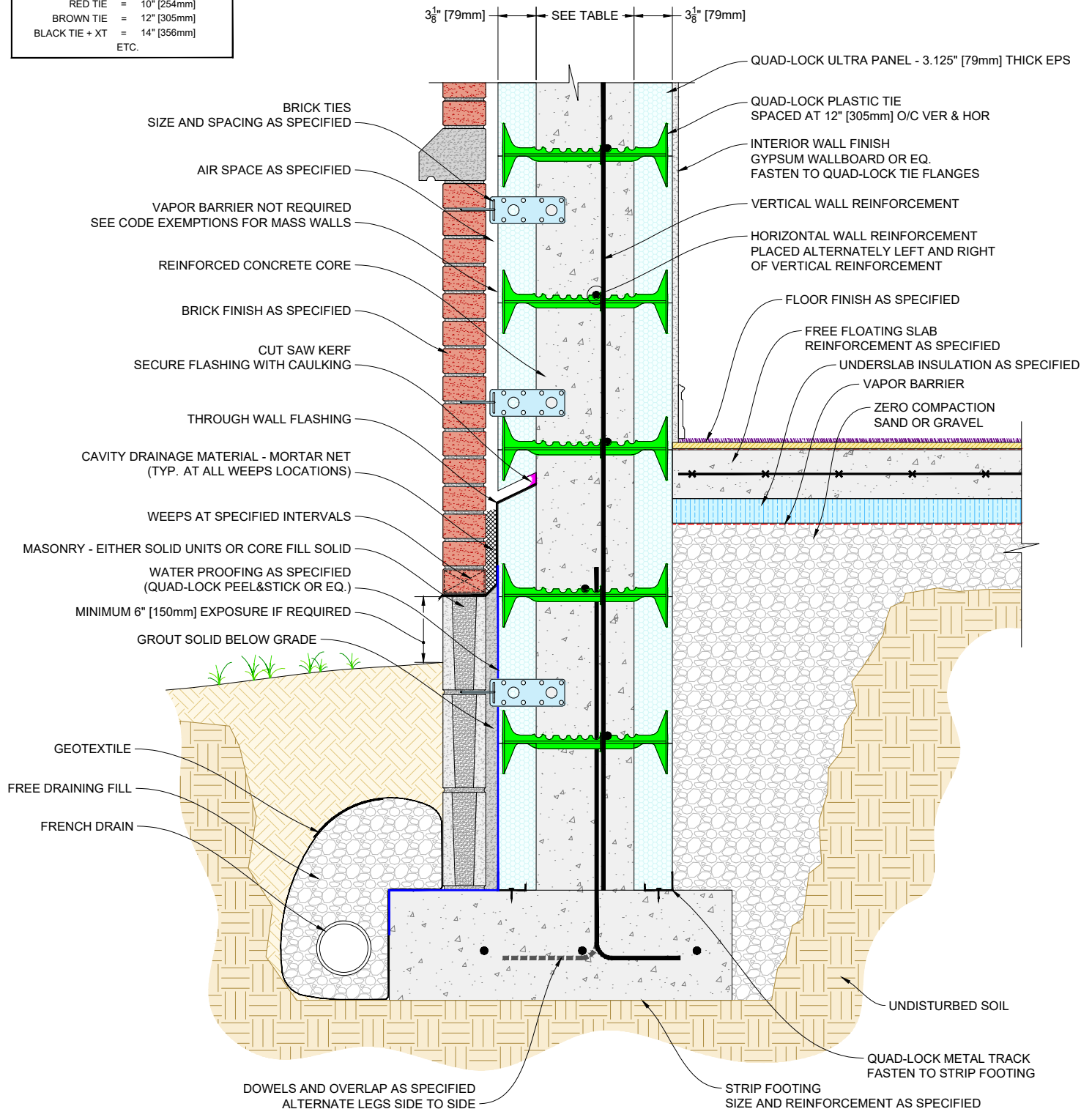


# QUAD-LOCK R-28 [U-0.21] WALL

TIE NAME	CONCRETE CORE THICKNESS
BLUE TIE = 4" [102mm]	
YELLOW TIE = 6" [152mm]	
GREEN TIE = 8" [203mm]	
RED TIE = 10" [254mm]	
BROWN TIE = 12" [305mm]	
BLACK TIE + XT = 14" [356mm]	
ETC.	



**QUAD-LOCK®**  
Building Systems

Quad-Lock Building Systems  
7398 - 132nd Street  
Surrey, BC V3W 4M7  
Canada  
888.711.5625 - Toll Free  
604.590.3111  
604.590.8412 - fax  
www.quadlock.com

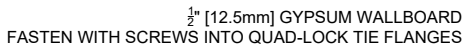
IT IS THE RESPONSIBILITY OF THE USER TO COMPLY WITH ALL APPLICABLE REGULATIONS AND BUILDING CODE REQUIREMENTS CONCERNING THE USE OF THESE PRODUCTS.

IT IS FURTHER THE RESPONSIBILITY OF THE USER TO RESEARCH AND UNDERSTAND SAFE METHODS OF USE AND HANDLING OF THESE PRODUCTS.

## QUAD-LOCK WALL WITH BRICK FINISH BRICK BEARING ON FOOTING

DATE DRAWN:	2018-06-01	SCALE:	NOT TO SCALE
REVISION NO:	N/A	SHEET SIZE:	8.5" x 11" [216mm x 279mm]
REVISION DATE:	YYYY-MM-DD	APPROVED ON:	2018-06-04
DRAWN BY:	Z. PROSTRAN	APPROVED BY:	G. KUSTERMANN
			DRAWING NO: QLU-601

QUAD-LOCK R-28 [U-0.21] WALL	
TIE NAME	CONCRETE CORE THICKNESS
BLUE TIE	= 4" [102mm]
YELLOW TIE	= 6" [152mm]
GREEN TIE	= 8" [203mm]
RED TIE	= 10" [254mm]
BROWN TIE	= 12" [305mm]
BLACK TIE + XT	= 14" [356mm]
ETC.	



QUAD-LOCK PLASTIC TIE (YELLOW SHOWN)  
SPACED AT 12" [305mm] O/C VER & HOR

VERTICAL AND HORIZONTAL  
WALL REINFORCEMENT AS SPECIFIED

3 $\frac{1}{8}$ " [79mm] ——— 6" [152mm] ——— 3 $\frac{1}{8}$ " [79mm]  
SEE TABLE

- AIR SPACE AS SPECIFIED

BRICK TIES  
SIZE AND SPACING AS SPECIFIED

— BRICK FINISH AS SPECIFIED

– VAPOR BARRIER NOT REQUIRED  
SEE CODE EXEMPTIONS FOR MASS WALLS

— CUT SAW KERF  
SECURE FLASHING WITH CAULKING

— METAL FLASHING

—  $\frac{5}{8}$ " [16mm] CONCRETE ANCHOR BOLT  
WITH FERRO WASHER

— CUT OUT EPS FOAM AT BRACKET LOCATION  
(SPRAYFOAM OVER BRACKETS  
AFTER INSTALLATION COMPLETE)

— GALVANIZED STEEL 4" [102mm] 'FAST'  
BRACKET BY FERRO  
USE  $\frac{1}{8}$ " [3mm] FERRO SHIM PLATES  
BETWEEN CONCRETE AND BRACKET

– STEEL ANGLE 4"x4"x $\frac{1}{2}$ " [102mm x 102mm x 6mm]

- SLOPE GRADE AWAY FROM WALL

— PARGING AS SPECIFIED  
MINIMUM 6" EXPOSED ABOVE GRADE

– WATER PROOFING AS SPECIFIED  
(QUAD-LOCK PEEL&STICK OR EQ.)

- BACKFILL

**QUAD-LOCK**  
Building Systems

**Quad-Lock Building Systems**  
7398 - 132nd Street  
Surrey, BC V3W 4M7  
Canada

888.711.5625 - Toll Free  
604.590.3111  
604.590.8412 - fax  
[www.quadlock.com](http://www.quadlock.com)

## QUAD-LOCK WALL WITH BRICK FINISH

DATE DRAWN: 2018-06-01

REVISION NO: N/A

REVISION DATE: YYYY-MM-DD

DRAWN BY: Z. PROSTRAN

SCALE: NOT TO SCALE

SHEET SIZE: 8.5" x 11" [216mm x 279mm]

APPROVED ON: 2018-06-04

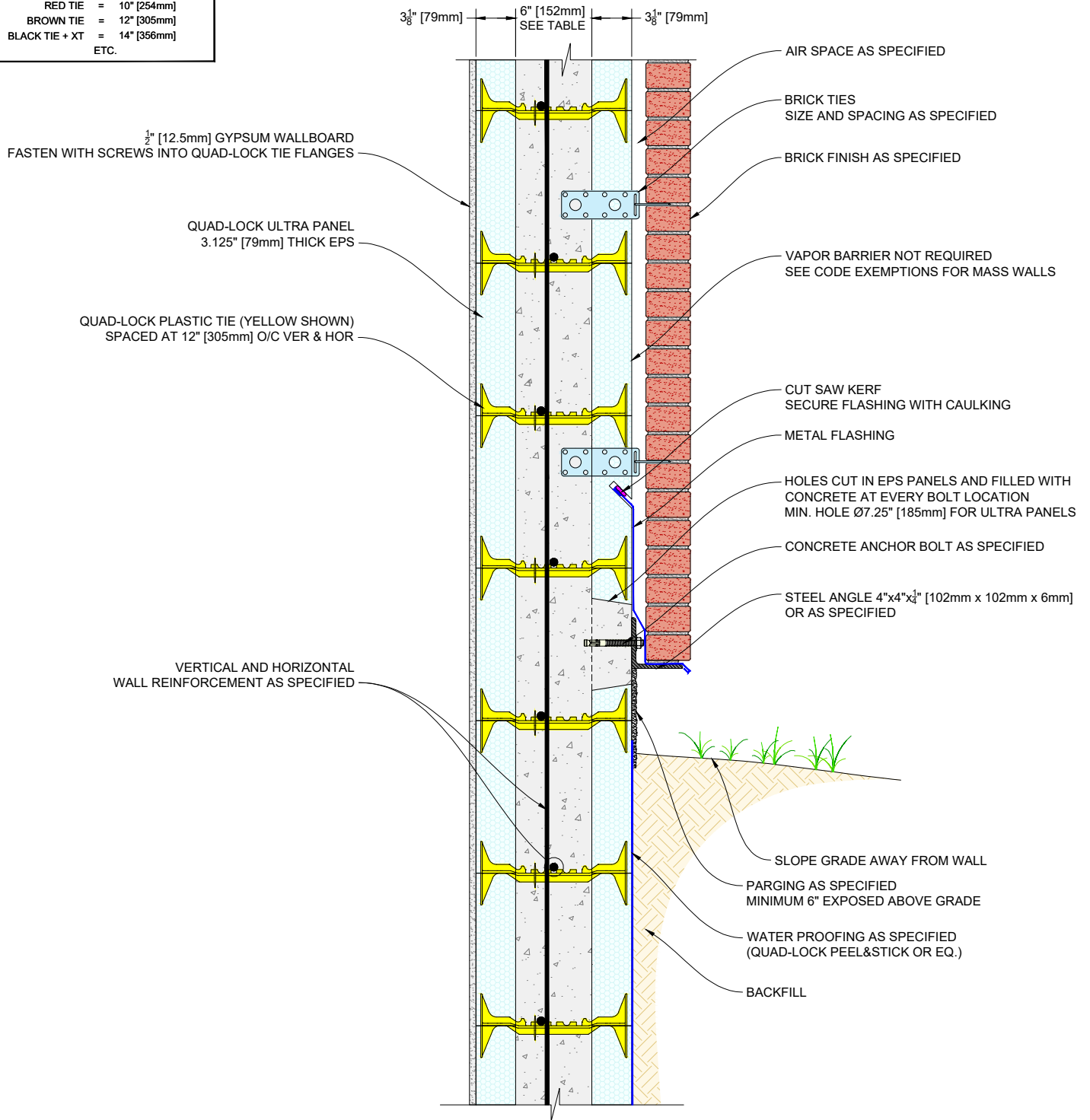
APPROVED BY: **G. KUSTERMANN**

QLU-602

IT IS THE RESPONSIBILITY OF THE USER TO COMPLY WITH ALL APPLICABLE REGULATIONS AND BUILDING CODE REQUIREMENTS CONCERNING THE USE OF THESE PRODUCTS.

IT IS FURTHER THE RESPONSIBILITY OF THE USER TO RESEARCH AND UNDERSTAND SAFE METHODS OF USE AND HANDLING OF THESE PRODUCTS.

QUAD-LOCK R-28 [U-0.21] WALL	
TIE NAME	CONCRETE CORE THICKNESS
BLUE TIE = 4" [102mm]	
YELLOW TIE = 6" [152mm]	
GREEN TIE = 8" [203mm]	
RED TIE = 10" [254mm]	
BROWN TIE = 12" [305mm]	
BLACK TIE + XT = 14" [356mm]	
ETC.	



**QUAD-LOCK®**  
Building Systems

Quad-Lock Building Systems  
7398 - 132nd Street  
Surrey, BC V3W 4M7  
Canada  
888.711.5625 - Toll Free  
604.590.3111  
604.590.8412 - fax  
www.quadlock.com

IT IS THE RESPONSIBILITY OF THE USER TO COMPLY WITH ALL APPLICABLE REGULATIONS AND BUILDING CODE REQUIREMENTS CONCERNING THE USE OF THESE PRODUCTS.

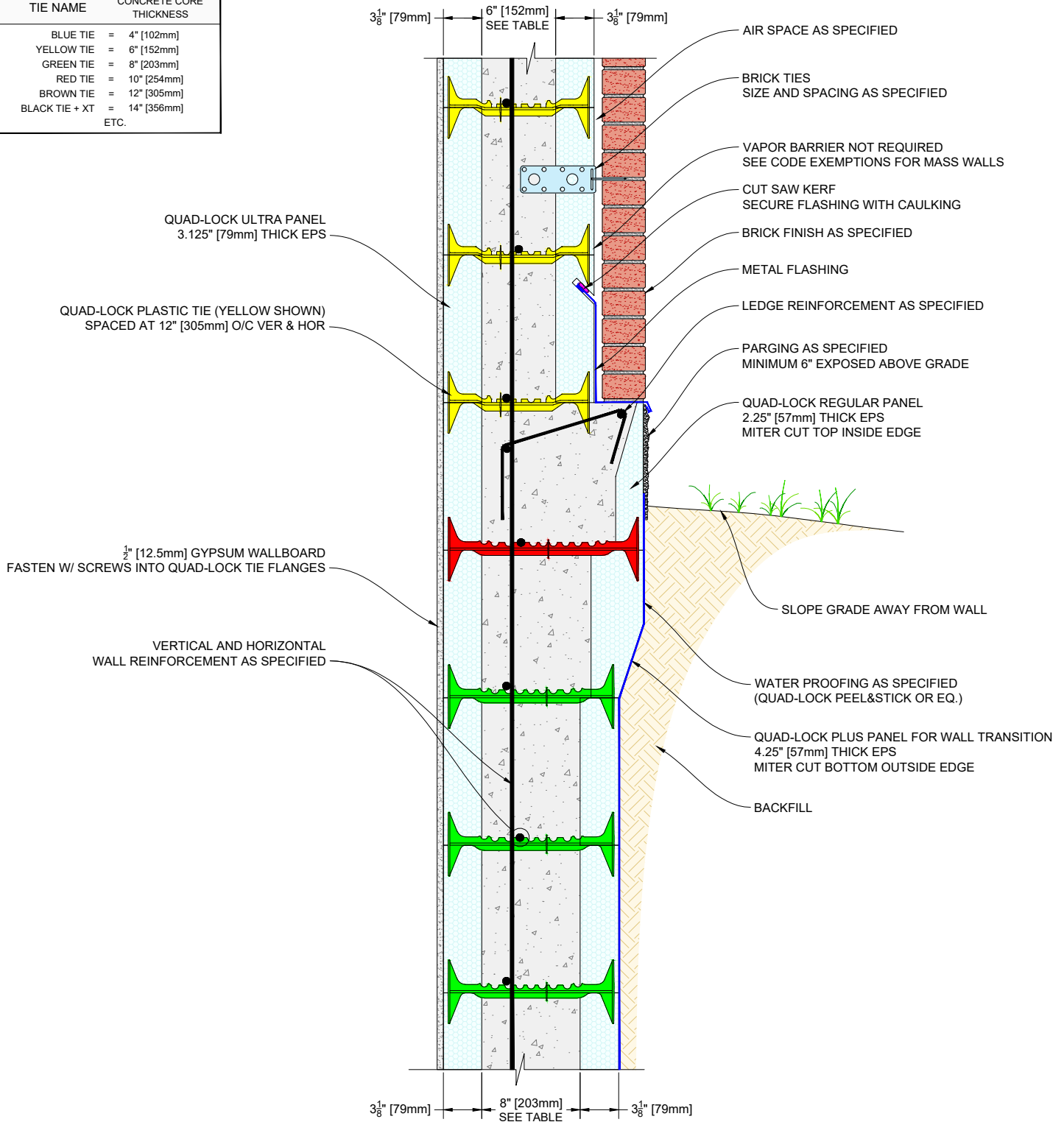
IT IS FURTHER THE RESPONSIBILITY OF THE USER TO RESEARCH AND UNDERSTAND SAFE METHODS OF USE AND HANDLING OF THESE PRODUCTS.

## QUAD-LOCK WALL WITH BRICK FINISH ANGLE BOLTED TO CONCRETE

DATE DRAWN:	2018-06-01	SCALE:	NOT TO SCALE
REVISION NO:	N/A	SHEET SIZE:	8.5" x 11" [216mm x 279mm]
REVISION DATE:	YYYY-MM-DD	APPROVED ON:	2018-06-04
DRAWN BY:	Z. PROSTRAN	APPROVED BY:	G. KUSTERMANN
			DRAWING NO: <b>QLU-603</b>

# QUAD-LOCK R-28 [U-0.21] WALL

TIE NAME	CONCRETE CORE THICKNESS
BLUE TIE = 4" [102mm]	
YELLOW TIE = 6" [152mm]	
GREEN TIE = 8" [203mm]	
RED TIE = 10" [254mm]	
BROWN TIE = 12" [305mm]	
BLACK TIE + XT = 14" [356mm]	
ETC.	



**QUAD-LOCK®**  
Building Systems

Quad-Lock Building Systems  
7398 - 132nd Street  
Surrey, BC V3W 4M7  
Canada  
888.711.5625 - Toll Free  
604.590.3111  
604.590.8412 - fax  
www.quadlock.com

IT IS THE RESPONSIBILITY OF THE USER TO COMPLY WITH ALL APPLICABLE REGULATIONS AND BUILDING CODE REQUIREMENTS CONCERNING THE USE OF THESE PRODUCTS.

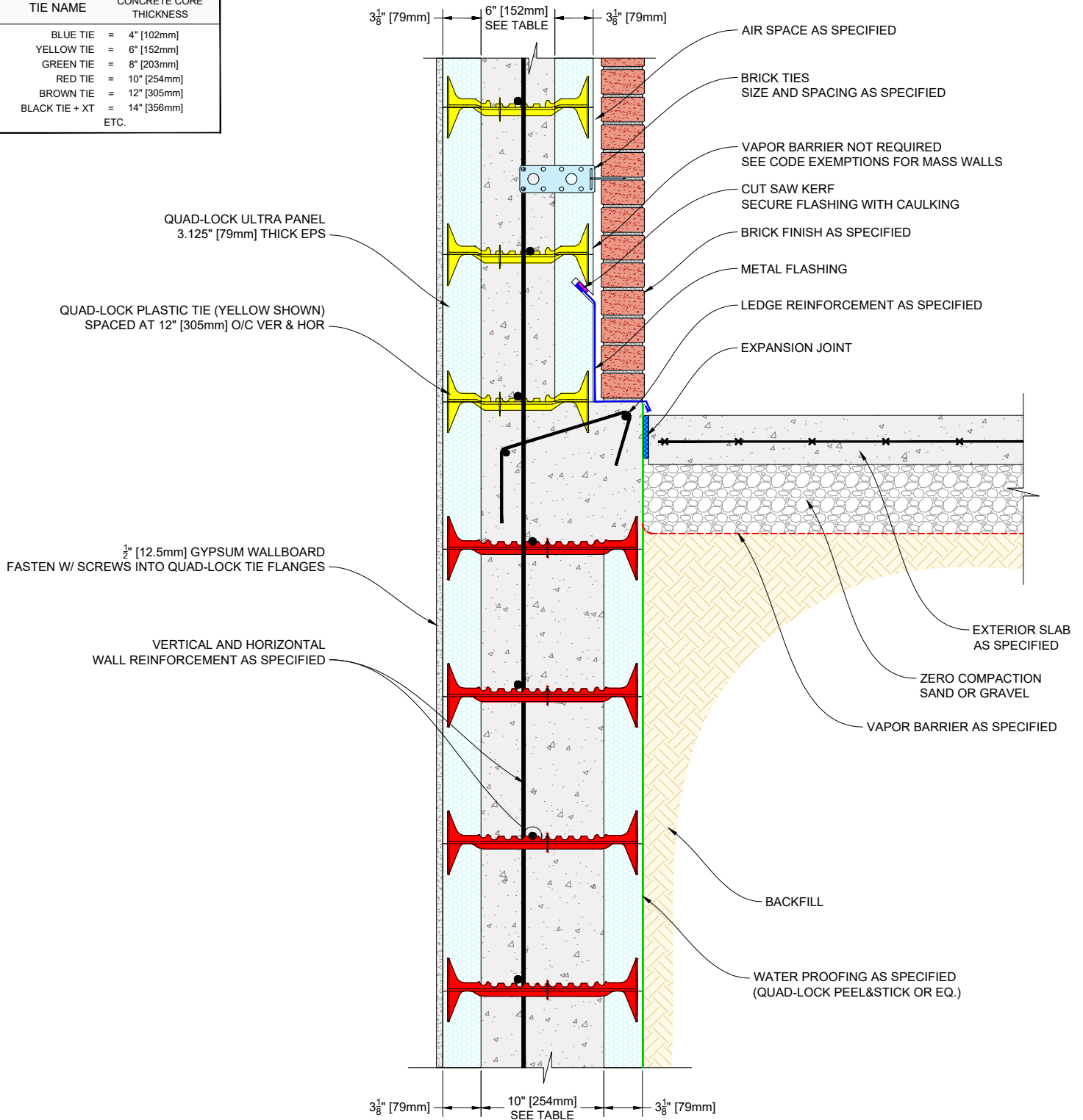
IT IS FURTHER THE RESPONSIBILITY OF THE USER TO RESEARCH AND UNDERSTAND SAFE METHODS OF USE AND HANDLING OF THESE PRODUCTS.

## QUAD-LOCK WALL WITH BRICK FINISH CONCRETE STEPPING OUT

DATE DRAWN:	2018-06-01	SCALE:	NOT TO SCALE
REVISION NO:	N/A	SHEET SIZE:	8.5" x 11" [216mm x 279mm]
REVISION DATE:	YYYY-MM-DD	APPROVED ON:	2018-06-04
DRAWN BY:	Z. PROSTRAN	APPROVED BY:	G. KUSTERMANN
			DRAWING NO: <b>QLU-604</b>

# QUAD-LOCK R-28 [U-0.21] WALL

TIE NAME	CONCRETE CORE THICKNESS
BLUE TIE = 4" [102mm]	
YELLOW TIE = 6" [152mm]	
GREEN TIE = 8" [203mm]	
RED TIE = 10" [254mm]	
BROWN TIE = 12" [305mm]	
BLACK TIE + XT = 14" [356mm]	
ETC.	



**QUAD-LOCK®**  
Building Systems

Quad-Lock Building Systems  
7398 - 132nd Street  
Surrey, BC V3W 4M7  
Canada  
888.711.5625 - Toll Free  
604.590.3111  
604.590.8412 - fax  
www.quadlock.com

IT IS THE RESPONSIBILITY OF THE USER TO COMPLY WITH ALL APPLICABLE REGULATIONS AND BUILDING CODE REQUIREMENTS CONCERNING THE USE OF THESE PRODUCTS.

IT IS FURTHER THE RESPONSIBILITY OF THE USER TO RESEARCH AND UNDERSTAND SAFE METHODS OF USE AND HANDLING OF THESE PRODUCTS.

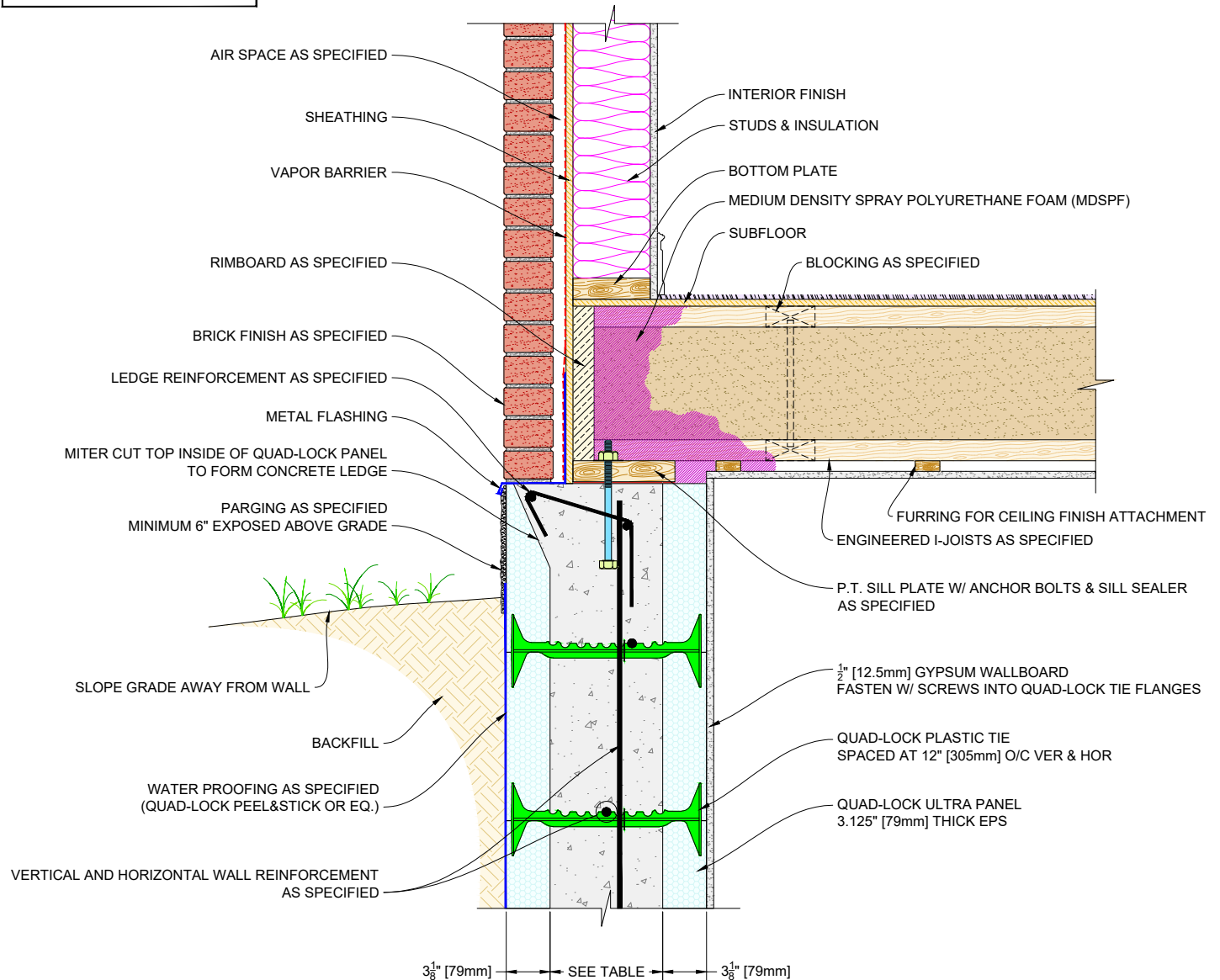
## QUAD-LOCK WALL WITH BRICK FINISH CONCRETE STEPPED OUT WITH EXTERIOR SLAB

DATE DRAWN:	2018-06-01	SCALE:	NOT TO SCALE
REVISION NO:	N/A	SHEET SIZE:	8.5" x 11" [216mm x 279mm]
REVISION DATE:	YYYY-MM-DD	APPROVED ON:	2018-06-04
DRAWN BY:	Z. PROSTRAN	APPROVED BY:	G. KUSTERMANN
			DRAWING NO: <b>QLU-605</b>



# QUAD-LOCK R-28 [U-0.21] WALL

TIE NAME	CONCRETE CORE THICKNESS
BLUE TIE = 4" [102mm]	
YELLOW TIE = 6" [152mm]	
GREEN TIE = 8" [203mm]	
RED TIE = 10" [254mm]	
BROWN TIE = 12" [305mm]	
BLACK TIE + XT = 14" [356mm]	
ETC.	



**QUAD-LOCK®**  
Building Systems

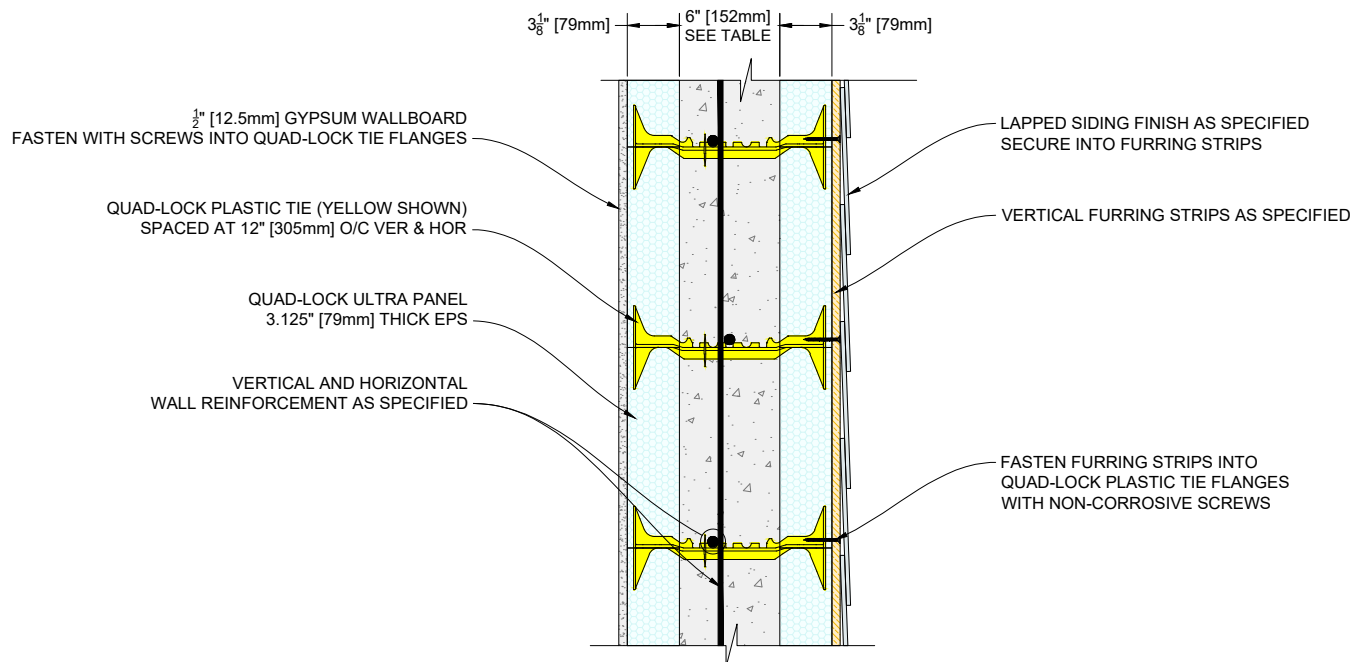
Quad-Lock Building Systems  
7398 - 132nd Street  
Surrey, BC V3W 4M7  
Canada  
888.711.5625 - Toll Free  
604.590.3111  
604.590.8412 - fax  
www.quadlock.com

IT IS THE RESPONSIBILITY OF THE USER TO COMPLY WITH ALL APPLICABLE REGULATIONS AND BUILDING CODE REQUIREMENTS CONCERNING THE USE OF THESE PRODUCTS.

IT IS FURTHER THE RESPONSIBILITY OF THE USER TO RESEARCH AND UNDERSTAND SAFE METHODS OF USE AND HANDLING OF THESE PRODUCTS.

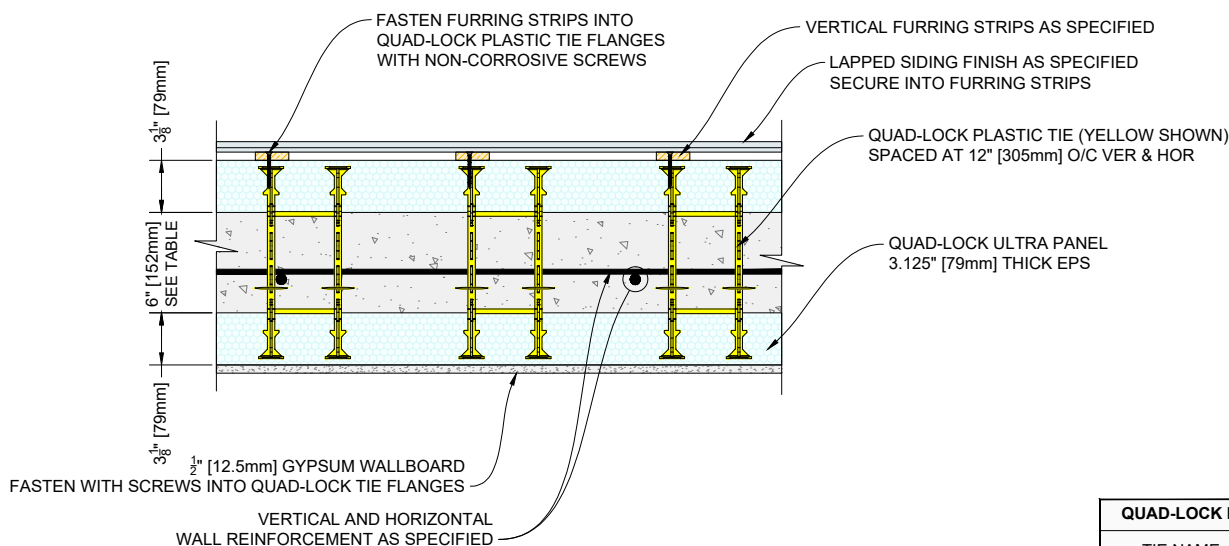
## QUAD-LOCK WALL WITH BRICK FINISH ON TOP CONCRETE CORBELLED OUT

DATE DRAWN:	2018-06-01	SCALE:	NOT TO SCALE
REVISION NO:	N/A	SHEET SIZE:	8.5" x 11" [216mm x 279mm]
REVISION DATE:	YYYY-MM-DD	APPROVED ON:	2018-06-04
DRAWN BY:	Z. PROSTRAN	APPROVED BY:	G. KUSTERMANN
			DRAWING NO: <b>QLU-606</b>



**1** SIDING FINISH - WALL SIDE VIEW

Scale: N.T.S.



**2** SIDING FINISH - WALL TOP VIEW

Scale: N.T.S.

QUAD-LOCK R-28 [U-0.21] WALL	
TIE NAME	CONCRETE CORE THICKNESS
BLUE TIE = 4" [102mm]	
YELLOW TIE = 6" [152mm]	
GREEN TIE = 8" [203mm]	
RED TIE = 10" [254mm]	
BROWN TIE = 12" [305mm]	
BLACK TIE + XT = 14" [356mm]	
ETC.	

**QUAD-LOCK®**  
Building Systems

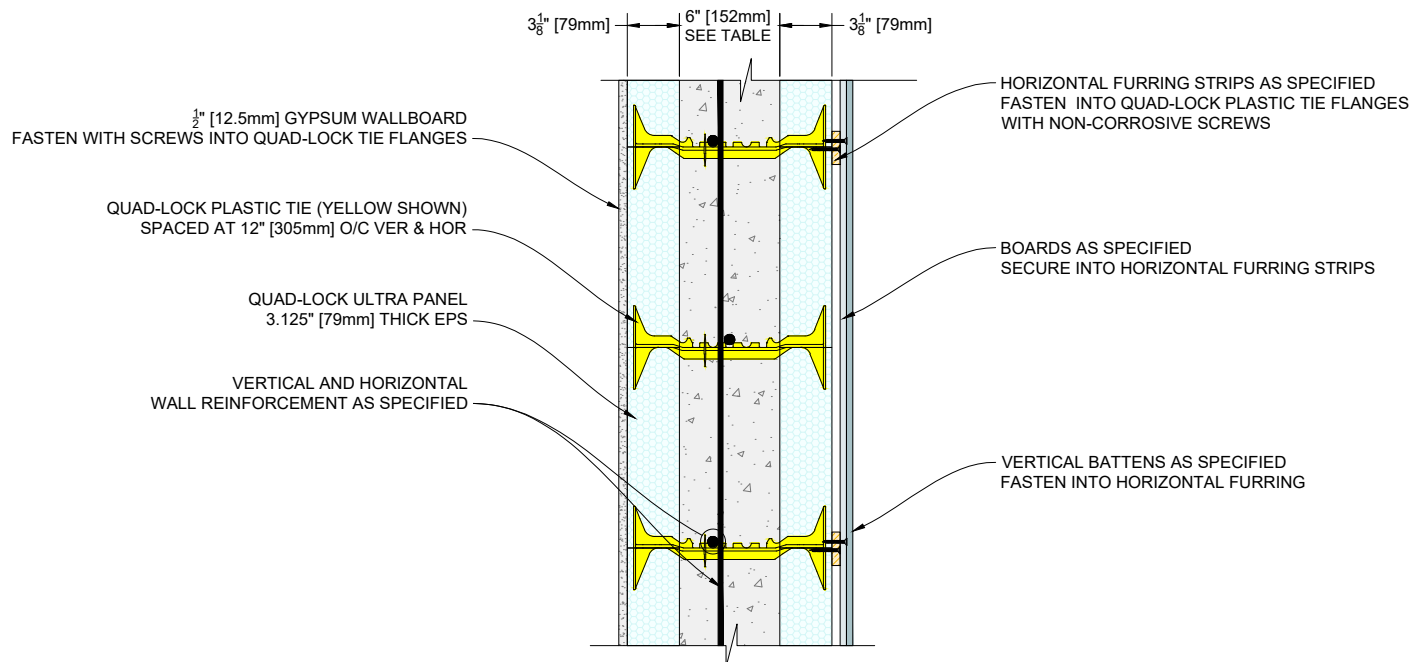
Quad-Lock Building Systems  
7398 - 132nd Street  
Surrey, BC V3W 4M7  
Canada  
888.711.5625 - Toll Free  
604.590.3111  
604.590.8412 - fax  
www.quadlock.com

IT IS THE RESPONSIBILITY OF THE USER TO COMPLY WITH ALL APPLICABLE REGULATIONS AND BUILDING CODE REQUIREMENTS CONCERNING THE USE OF THESE PRODUCTS.

IT IS FURTHER THE RESPONSIBILITY OF THE USER TO RESEARCH AND UNDERSTAND SAFE METHODS OF USE AND HANDLING OF THESE PRODUCTS.

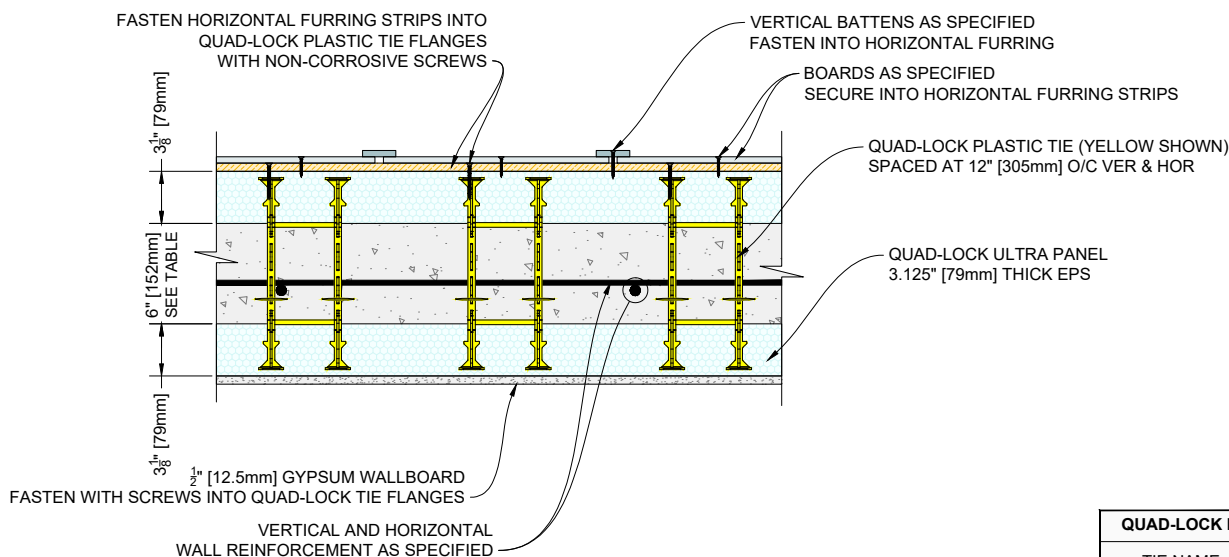
## QUAD-LOCK WALL WITH LAPPED SIDING FINISH WITH VERTICAL FURRING STRIPS

DATE DRAWN:	2018-06-01	SCALE:	NOT TO SCALE
REVISION NO:	N/A	SHEET SIZE:	8.5" x 11" [216mm x 279mm]
REVISION DATE:	YYYY-MM-DD	APPROVED ON:	2018-06-04
DRAWN BY:	Z. PROSTRAN	APPROVED BY:	G. KUSTERMANN
			QLU-607



**1 BOARD&BATTEN FINISH - WALL SIDE VIEW**

Scale: N.T.S.



**2 BOARD&BATTEN FINISH - WALL TOP VIEW**

Scale: N.T.S.

QUAD-LOCK R-28 [U-0.21] WALL	
TIE NAME	CONCRETE CORE THICKNESS
BLUE TIE = 4" [102mm]	
YELLOW TIE = 6" [152mm]	
GREEN TIE = 8" [203mm]	
RED TIE = 10" [254mm]	
BROWN TIE = 12" [305mm]	
BLACK TIE + XT = 14" [356mm]	
ETC.	

**QUAD-LOCK®**  
Building Systems

Quad-Lock Building Systems  
7398 - 132nd Street  
Surrey, BC V3W 4M7  
Canada  
888.711.5625 - Toll Free  
604.590.3111  
604.590.8412 - fax  
www.quadlock.com

IT IS THE RESPONSIBILITY OF THE USER TO COMPLY WITH ALL APPLICABLE REGULATIONS AND BUILDING CODE REQUIREMENTS CONCERNING THE USE OF THESE PRODUCTS.

IT IS FURTHER THE RESPONSIBILITY OF THE USER TO RESEARCH AND UNDERSTAND SAFE METHODS OF USE AND HANDLING OF THESE PRODUCTS.

## QUAD-LOCK WALL WITH BOARD&BATTEN FINISH WITH HORIZONTAL FURRING STRIPS

DATE DRAWN:	2018-06-01	SCALE:	NOT TO SCALE
REVISION NO:	N/A	SHEET SIZE:	8.5" x 11" [216mm x 279mm]
REVISION DATE:	YYYY-MM-DD	APPROVED ON:	2018-06-04
DRAWN BY:	Z. PROSTRAN	APPROVED BY:	G. KUSTERMANN
			QLU-608



**QUAD-LOCK R-28 [U-0.21] WALL**

TIE NAME	CONCRETE CORE THICKNESS
BLUE TIE	= 4" [102mm]
YELLOW TIE	= 6" [152mm]
GREEN TIE	= 8" [203mm]
RED TIE	= 10" [254mm]
BROWN TIE	= 12" [305mm]
BLACK TIE + XT	= 14" [356mm]
ETC.	

QUAD-LOCK PLASTIC TIE (YELLOW SHOWN)  
SPACED AT 12" [305mm] O/C VER & HOR

QUAD-LOCK ULTRA PANEL  
3.125" [79mm] THICK EPS

VERTICAL AND HORIZONTAL  
WALL REINFORCEMENT AS SPECIFIED

STUCCO FINISH COAT

SECOND LAYER OF BASE COAT

BASE COAT

EMBED NYLON MESH INTO BASE COAT

EPS SURFACE RASPED OR PRESSURE WASHED  
TO REMOVE UV RESIDUE

3 1/8" [79mm]

6" [152mm]  
SEE TABLE

3 1/8" [79mm]

**QUAD-LOCK®**  
Building Systems

Quad-Lock Building Systems  
7398 - 132nd Street  
Surrey, BC V3W 4M7  
Canada  
888.711.5625 - Toll Free  
604.590.3111  
604.590.8412 - fax  
www.quadlock.com

IT IS THE RESPONSIBILITY OF THE USER TO COMPLY WITH ALL APPLICABLE  
REGULATIONS AND BUILDING CODE REQUIREMENTS CONCERNING THE USE OF  
THESE PRODUCTS.

IT IS FURTHER THE RESPONSIBILITY OF THE USER TO RESEARCH AND UNDERSTAND  
SAFE METHODS OF USE AND HANDLING OF THESE PRODUCTS.

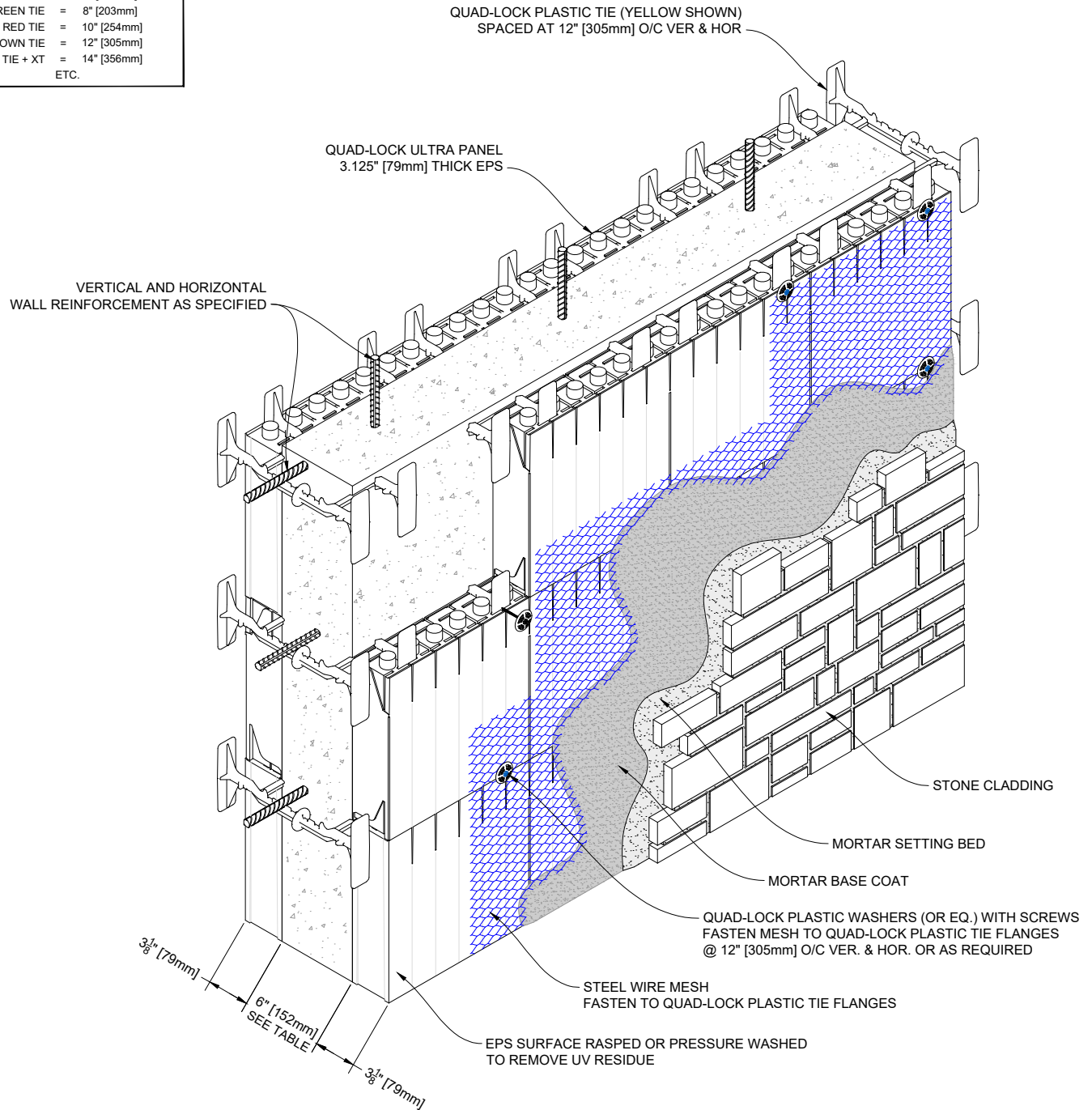
## QUAD-LOCK WALL WITH STUCCO FINISH

### NYLON MESH EMBEDDED IN BASE COAT

DATE DRAWN:	2018-06-01	SCALE:	NOT TO SCALE
REVISION NO.:	N/A	SHEET SIZE:	8.5" x 11" [216mm x 279mm]
REVISION DATE:	YYYY-MM-DD	APPROVED ON:	2018-06-04
DRAWN BY:	Z. PROSTRAN	APPROVED BY:	G. KUSTERMANN
			DRAWING NO.: QLU-609

**QUAD-LOCK R-28 [U-0.21] WALL**

TIE NAME	CONCRETE CORE THICKNESS
BLUE TIE	= 4" [102mm]
YELLOW TIE	= 6" [152mm]
GREEN TIE	= 8" [203mm]
RED TIE	= 10" [254mm]
BROWN TIE	= 12" [305mm]
BLACK TIE + XT	= 14" [356mm]
ETC.	



**QUAD-LOCK®**  
Building Systems

Quad-Lock Building Systems  
7398 - 132nd Street  
Surrey, BC V3W 4M7  
Canada  
888.711.5625 - Toll Free  
604.590.3111  
604.590.8412 - fax  
www.quadlock.com

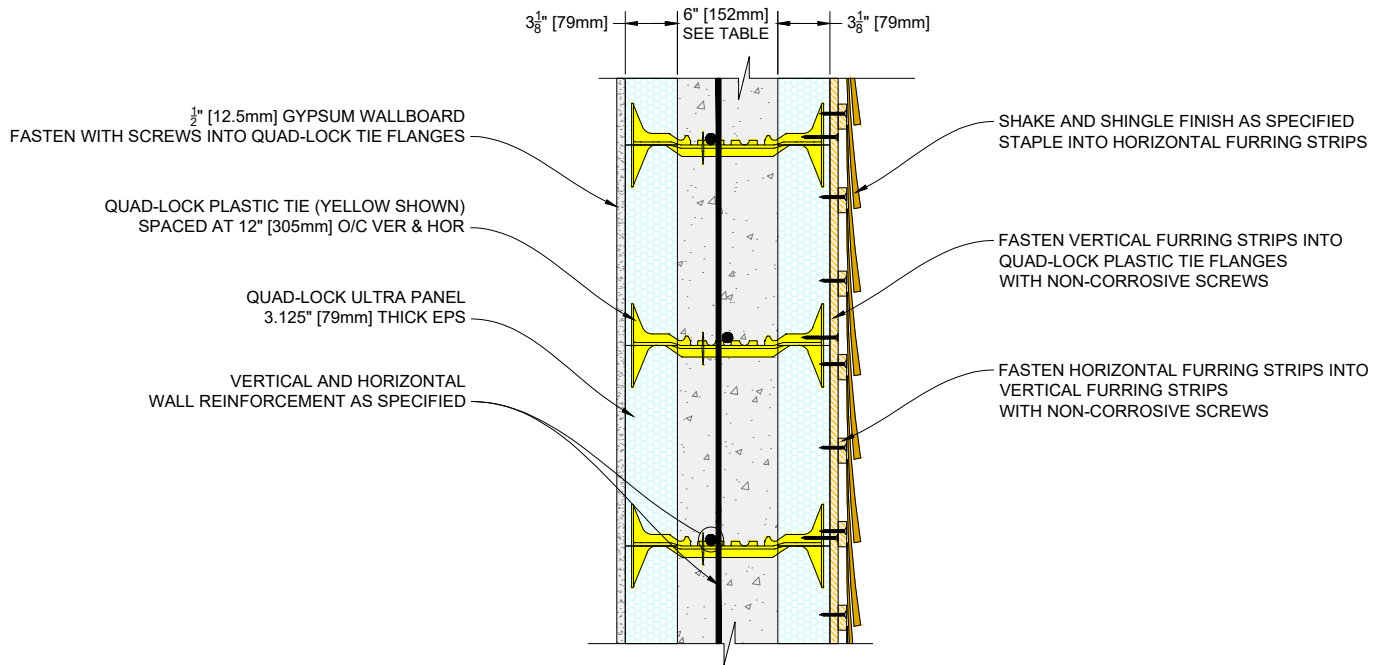
IT IS THE RESPONSIBILITY OF THE USER TO COMPLY WITH ALL APPLICABLE  
REGULATIONS AND BUILDING CODE REQUIREMENTS CONCERNING THE USE OF  
THESE PRODUCTS.

IT IS FURTHER THE RESPONSIBILITY OF THE USER TO RESEARCH AND UNDERSTAND  
SAFE METHODS OF USE AND HANDLING OF THESE PRODUCTS.

**QUAD-LOCK WALL WITH STONE CLADDING FINISH**

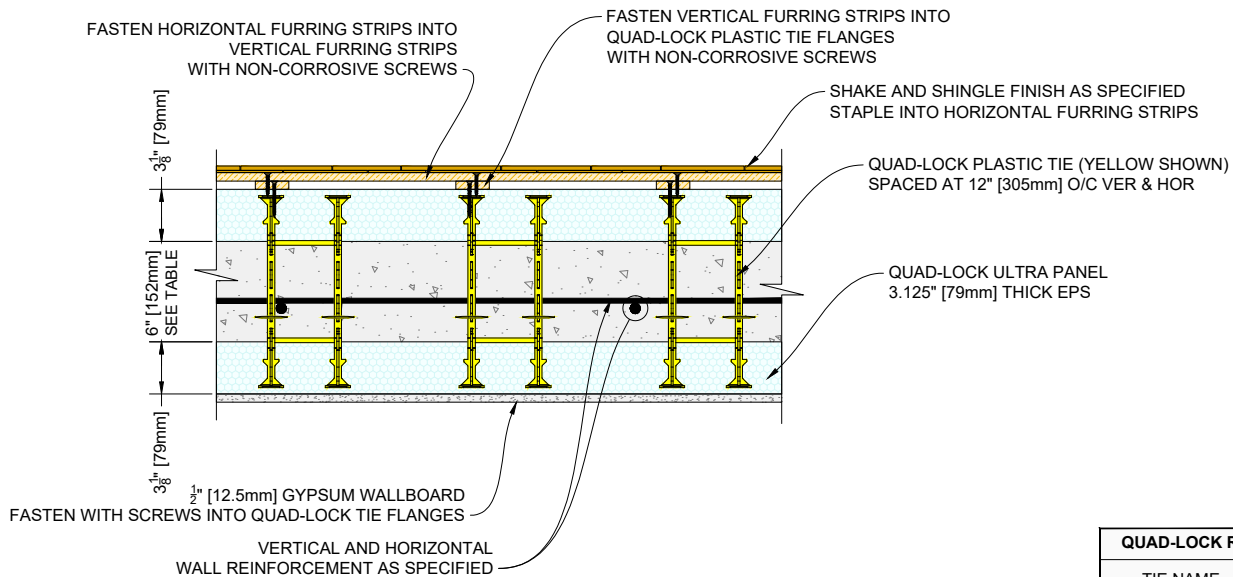
STEEL WIRE MESH FASTENED TO QUAD-LOCK TIE FLANGES

DATE DRAWN:	2018-06-01	SCALE:	NOT TO SCALE
REVISION NO:	N/A	SHEET SIZE:	8.5" x 11" [216mm x 279mm]
REVISION DATE:	YYYY-MM-DD	APPROVED ON:	2018-06-04
DRAWN BY:	Z. PROSTRAN	APPROVED BY:	G. KUSTERMANN
			DRAWING NO: <b>QLU-610</b>



1 SHAKE & SHINGLE FINISH - WALL SIDE VIEW

Scale: N.T.S.



2 SHAKE & SHINGLE FINISH - WALL TOP VIEW

Scale: N.T.S.

QUAD-LOCK R-28 [U-0.21] WALL	
TIE NAME	CONCRETE CORE THICKNESS
BLUE TIE = 4" [102mm]	
YELLOW TIE = 6" [152mm]	
GREEN TIE = 8" [203mm]	
RED TIE = 10" [254mm]	
BROWN TIE = 12" [305mm]	
BLACK TIE + XT = 14" [356mm]	
ETC.	

**QUAD-LOCK**<sup>®</sup>  
Building Systems

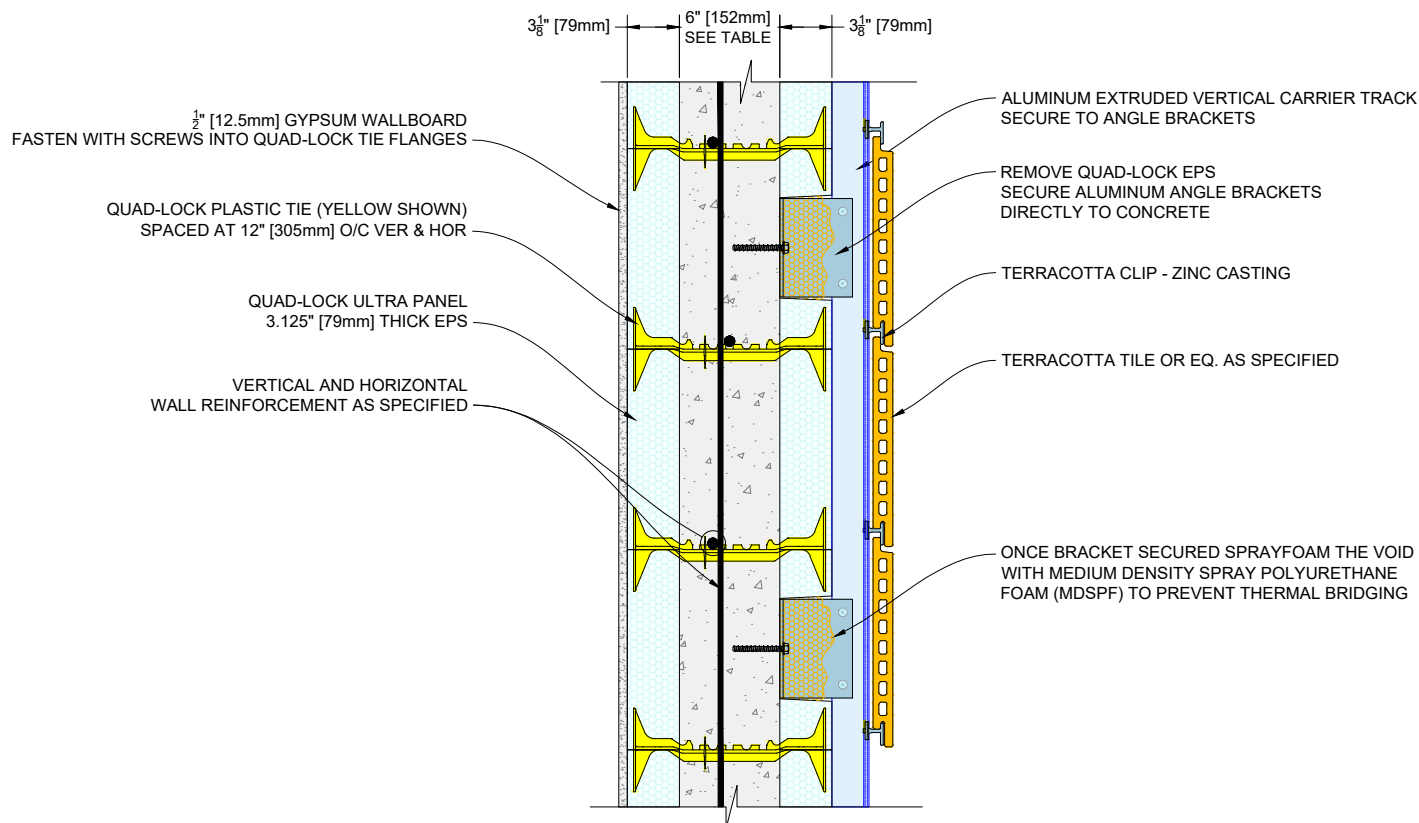
Quad-Lock Building Systems  
7398 - 132nd Street  
Surrey, BC V3W 4M7  
Canada  
888.711.5625 - Toll Free  
604.590.3111  
604.590.8412 - fax  
www.quadlock.com

IT IS THE RESPONSIBILITY OF THE USER TO COMPLY WITH ALL APPLICABLE REGULATIONS AND BUILDING CODE REQUIREMENTS CONCERNING THE USE OF THESE PRODUCTS.

IT IS FURTHER THE RESPONSIBILITY OF THE USER TO RESEARCH AND UNDERSTAND SAFE METHODS OF USE AND HANDLING OF THESE PRODUCTS.

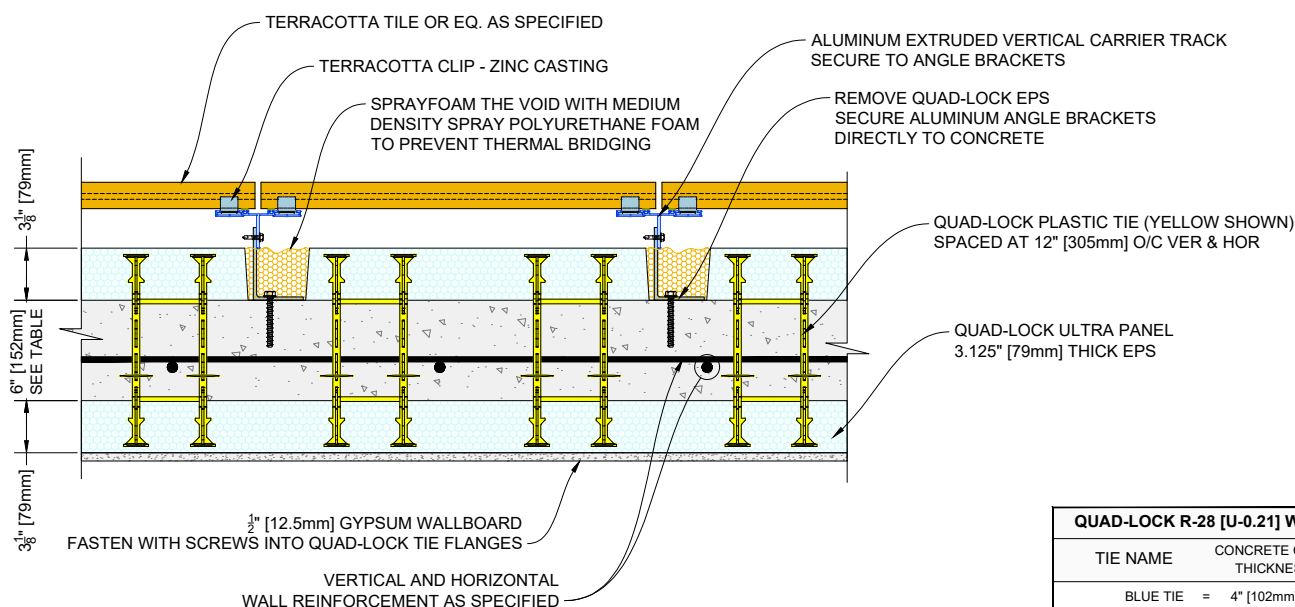
## QUAD-LOCK WALL WITH SHAKE&SHINGLE FINISH WITH HORIZONTAL FURRING ATTACHED TO VERTICAL FURRING

DATE DRAWN:	2018-06-01	SCALE:	NOT TO SCALE
REVISION NO:	N/A	SHEET SIZE:	8.5" x 11" [216mm x 279mm]
REVISION DATE:	YYYY-MM-DD	APPROVED ON:	2018-06-04
DRAWN BY:	Z. PROSTRAN	APPROVED BY:	G. KUSTERMANN
			QLU-611



**1** SHAKE & SHINGLE FINISH - WALL SIDE VIEW

Scale: N.T.S.



**2** SHAKE & SHINGLE FINISH - WALL TOP VIEW

Scale: N.T.S.

**QUAD-LOCK R-28 [U-0.21] WALL**

TIE NAME	CONCRETE CORE THICKNESS
BLUE TIE = 4" [102mm]	
YELLOW TIE = 6" [152mm]	
GREEN TIE = 8" [203mm]	
RED TIE = 10" [254mm]	
BROWN TIE = 12" [305mm]	
BLACK TIE + XT = 14" [356mm]	
ETC.	

**QUAD-LOCK®**  
Building Systems

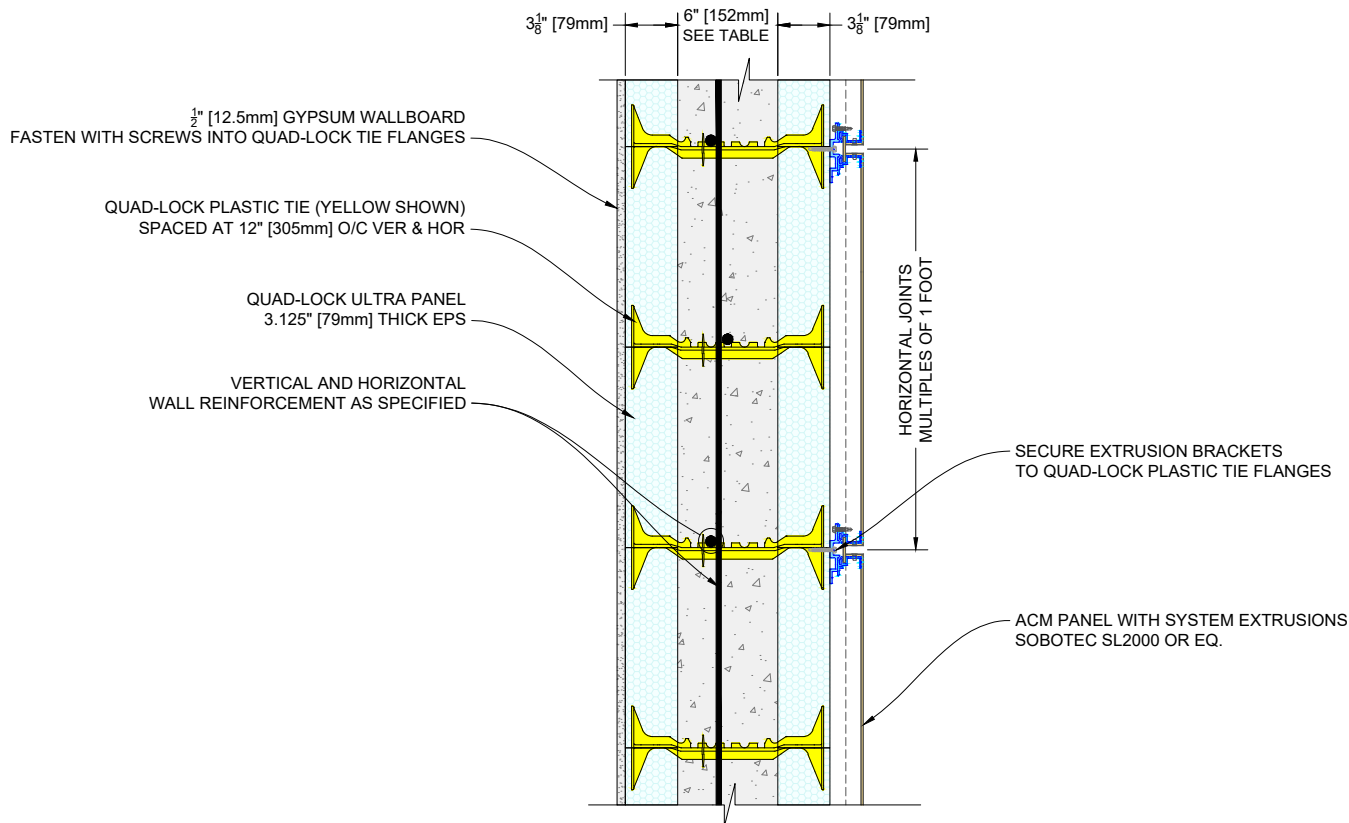
Quad-Lock Building Systems  
7398 - 132nd Street  
Surrey, BC V3W 4M7  
Canada  
888.711.5625 - Toll Free  
604.590.3111  
604.590.8412 - fax  
www.quadlock.com

IT IS THE RESPONSIBILITY OF THE USER TO COMPLY WITH ALL APPLICABLE REGULATIONS AND BUILDING CODE REQUIREMENTS CONCERNING THE USE OF THESE PRODUCTS.

IT IS FURTHER THE RESPONSIBILITY OF THE USER TO RESEARCH AND UNDERSTAND SAFE METHODS OF USE AND HANDLING OF THESE PRODUCTS.

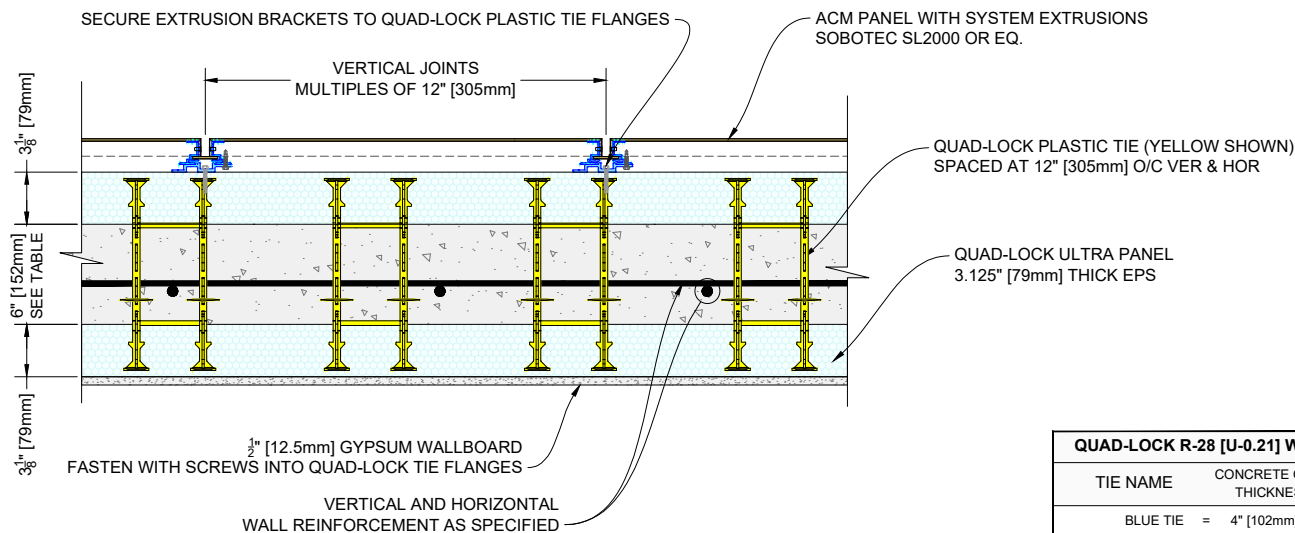
## QUAD-LOCK WALL WITH TERRA COTTA TILE FINISH

DATE DRAWN:	2018-06-01	SCALE:	NOT TO SCALE
REVISION NO:	N/A	SHEET SIZE:	8.5" x 11" [216mm x 279mm]
REVISION DATE:	YYYY-MM-DD	APPROVED ON:	2018-06-04
DRAWN BY:	Z. PROSTRAN	APPROVED BY:	G. KUSTERMANN
			QLU-612



1 ACM PANEL FINISH - WALL SIDE VIEW

Scale: N.T.S.



2 ACM PANEL FINISH - WALL TOP VIEW

Scale: N.T.S.

**QUAD-LOCK R-28 [U-0.21] WALL**

TIE NAME	CONCRETE CORE THICKNESS
BLUE TIE = 4" [102mm]	
YELLOW TIE = 6" [152mm]	
GREEN TIE = 8" [203mm]	
RED TIE = 10" [254mm]	
BROWN TIE = 12" [305mm]	
BLACK TIE + XT = 14" [356mm]	
ETC.	

**QUAD-LOCK®**  
Building Systems

Quad-Lock Building Systems  
7398 - 132nd Street  
Surrey, BC V3W 4M7  
Canada  
888.711.5625 - Toll Free  
604.590.3111  
604.590.8412 - fax  
www.quadlock.com

IT IS THE RESPONSIBILITY OF THE USER TO COMPLY WITH ALL APPLICABLE REGULATIONS AND BUILDING CODE REQUIREMENTS CONCERNING THE USE OF THESE PRODUCTS.

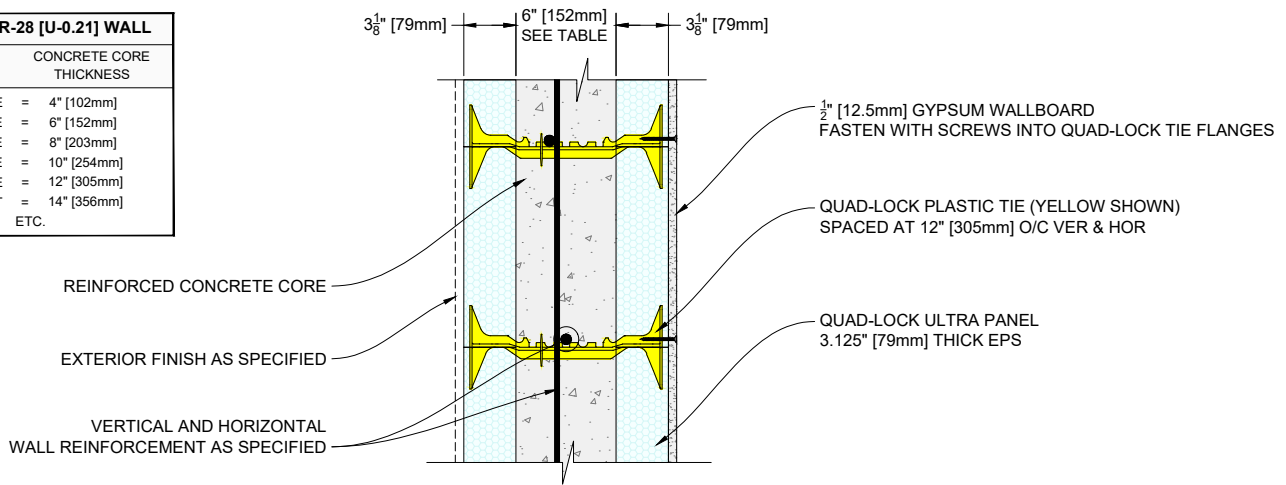
IT IS FURTHER THE RESPONSIBILITY OF THE USER TO RESEARCH AND UNDERSTAND SAFE METHODS OF USE AND HANDLING OF THESE PRODUCTS.

**QUAD-LOCK WALL WITH ACM PANEL FINISH**

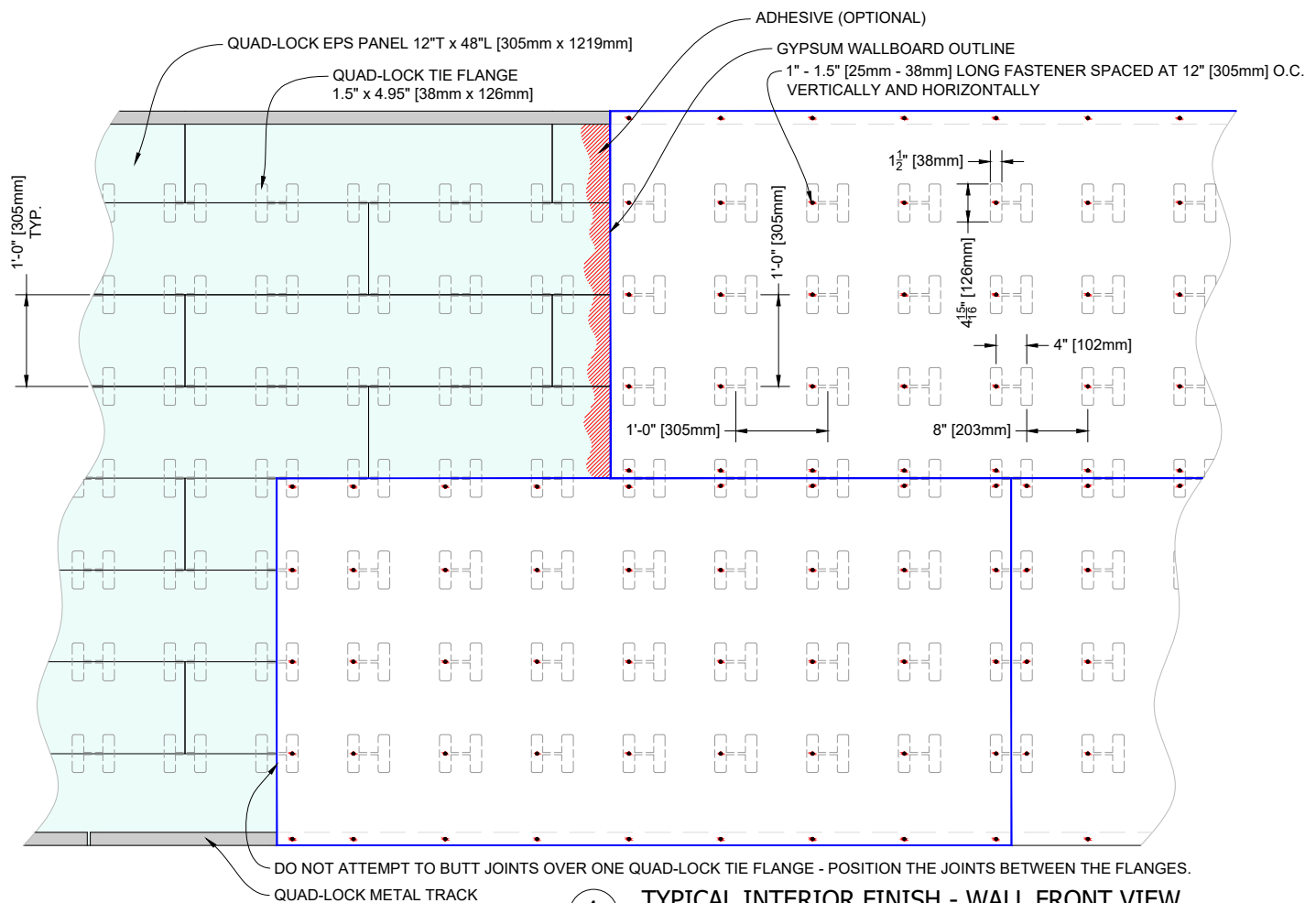
DATE DRAWN:	2018-06-01	SCALE:	NOT TO SCALE
REVISION NO:	N/A	SHEET SIZE:	8.5" x 11" [216mm x 279mm]
REVISION DATE:	YYYY-MM-DD	APPROVED ON:	2018-06-04
DRAWN BY:	Z. PROSTRAN	APPROVED BY:	G. KUSTERMANN
			QLU-613



QUAD-LOCK R-28 [U-0.21] WALL	
TIE NAME	CONCRETE CORE THICKNESS
BLUE TIE	= 4" [102mm]
YELLOW TIE	= 6" [152mm]
GREEN TIE	= 8" [203mm]
RED TIE	= 10" [254mm]
BROWN TIE	= 12" [305mm]
BLACK TIE + XT	= 14" [356mm]
ETC.	



**1** TYPICAL INTERIOR FINISH - WALL SIDE VIEW  
Scale: N.T.S.



**1** TYPICAL INTERIOR FINISH - WALL FRONT VIEW  
Scale: N.T.S.

**NOTES:**  
 USER TO COMPLY WITH APPLICABLE CODE SECTION FOR INTERIOR WALL AND CEILING FINISHES  
 ALSO CONFORM TO FIRE PROTECTION AND SOUND CONTROL REQUIREMENTS AS SET OUT BY THE APPLICABLE CODE  
 NAILS ARE NOT RECOMMENDED  
 STUD-FINDERS ARE USED TO LOCATE THE TIE FLANGES IF THEY ARE NOT POSITIONED REGULARLY  
 ALTERNATIVELY A COMBINATION OF MECHANICAL FASTENING AND ADHESIVE IS PERMITTED GIVEN THAT THE ADHESIVE IS WATER BASED (EPS COMPATIBLE)

**QUAD-LOCK®**  
 Building Systems

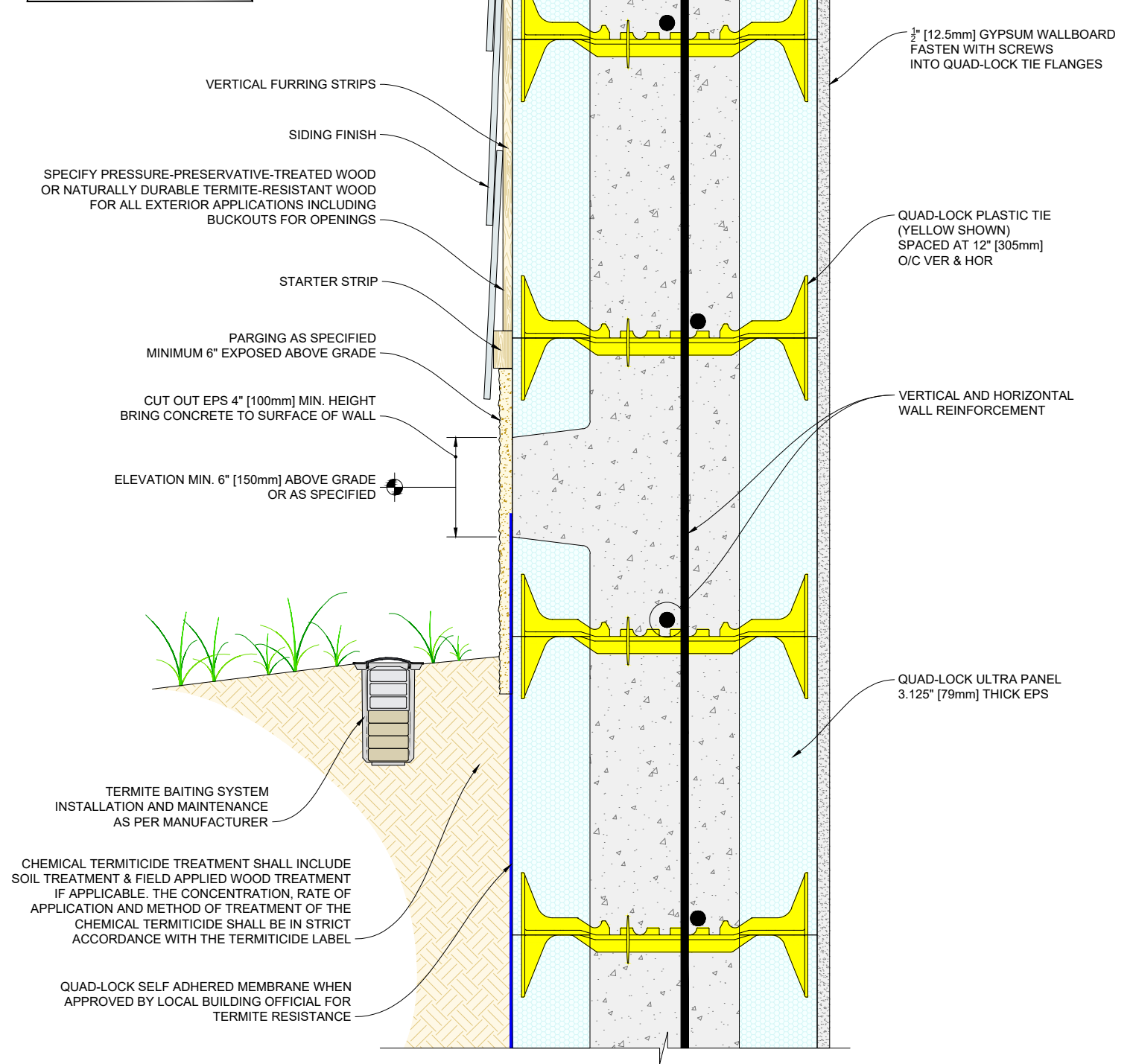
Quad-Lock Building Systems  
 7398 - 132nd Street  
 Surrey, BC V3W 4M7  
 Canada  
 888.711.5625 - Toll Free  
 604.590.3111  
 604.590.8412 - fax  
 www.quadlock.com

IT IS THE RESPONSIBILITY OF THE USER TO COMPLY WITH ALL APPLICABLE REGULATIONS AND BUILDING CODE REQUIREMENTS CONCERNING THE USE OF THESE PRODUCTS.  
 IT IS FURTHER THE RESPONSIBILITY OF THE USER TO RESEARCH AND UNDERSTAND SAFE METHODS OF USE AND HANDLING OF THESE PRODUCTS.

## QUAD-LOCK WALL INTERIOR FINISH GYPSUM WALLBOARD

DATE DRAWN:	2018-06-01	SCALE:	NOT TO SCALE
REVISION NO:	N/A	SHEET SIZE:	8.5" x 11" [216mm x 279mm]
REVISION DATE:	YYYY-MM-DD	APPROVED ON:	2018-06-04
DRAWN BY:	Z. PROSTRAN	APPROVED BY:	G. KUSTERMANN
			QLU-614

QUAD-LOCK R-28 [U-0.21] WALL	
TIE NAME	CONCRETE CORE THICKNESS
BLUE TIE	= 4" [102mm]
YELLOW TIE	= 6" [152mm]
GREEN TIE	= 8" [203mm]
RED TIE	= 10" [254mm]
BROWN TIE	= 12" [305mm]
BLACK TIE + XT	= 14" [356mm]
ETC.	



**QUAD-LOCK®**  
Building Systems

Quad-Lock Building Systems  
7398 - 132nd Street  
Surrey, BC V3W 4M7  
Canada  
888.711.5625 - Toll Free  
604.590.3111  
604.590.8412 - fax  
www.quadlock.com

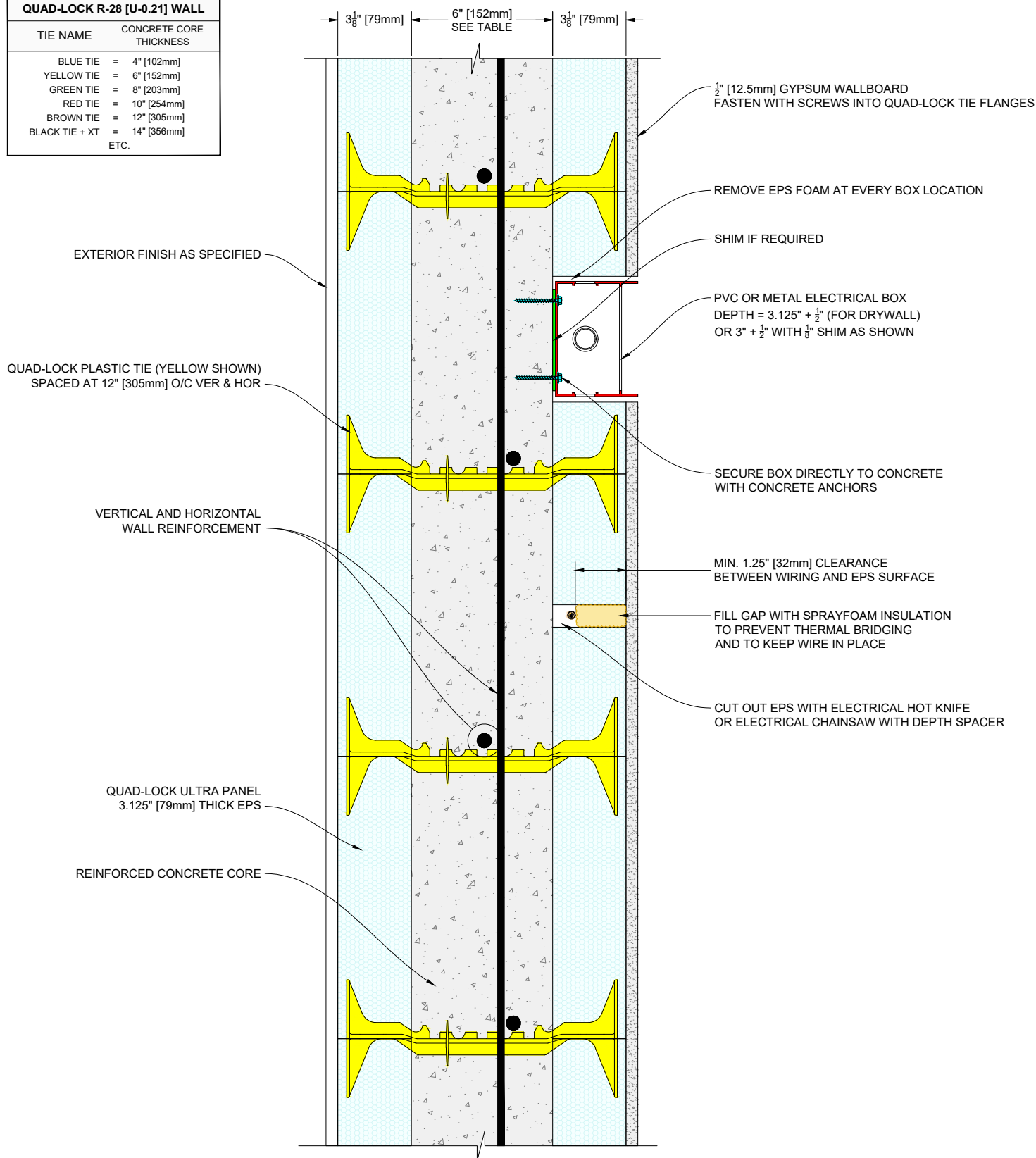
IT IS THE RESPONSIBILITY OF THE USER TO COMPLY WITH ALL APPLICABLE REGULATIONS AND BUILDING CODE REQUIREMENTS CONCERNING THE USE OF THESE PRODUCTS.

IT IS FURTHER THE RESPONSIBILITY OF THE USER TO RESEARCH AND UNDERSTAND SAFE METHODS OF USE AND HANDLING OF THESE PRODUCTS.

## QUAD-LOCK WALL TERMITE DETAIL

DATE DRAWN:	2018-06-01	SCALE:	NOT TO SCALE
REVISION NO.:	N/A	SHEET SIZE:	8.5" x 11" [216mm x 279mm]
REVISION DATE:	YYYY-MM-DD	APPROVED ON:	2018-06-04
DRAWN BY:	Z. PROSTRAN	APPROVED BY:	G. KUSTERMAN
			QLU-615

QUAD-LOCK R-28 [U-0.21] WALL	
TIE NAME	CONCRETE CORE THICKNESS
BLUE TIE	= 4" [102mm]
YELLOW TIE	= 6" [152mm]
GREEN TIE	= 8" [203mm]
RED TIE	= 10" [254mm]
BROWN TIE	= 12" [305mm]
BLACK TIE + XT	= 14" [356mm]
ETC.	



**QUAD-LOCK®**  
Building Systems

Quad-Lock Building Systems  
7398 - 132nd Street  
Surrey, BC V3W 4M7  
Canada  
888.711.5625 - Toll Free  
604.590.3111  
604.590.8412 - fax  
www.quadlock.com

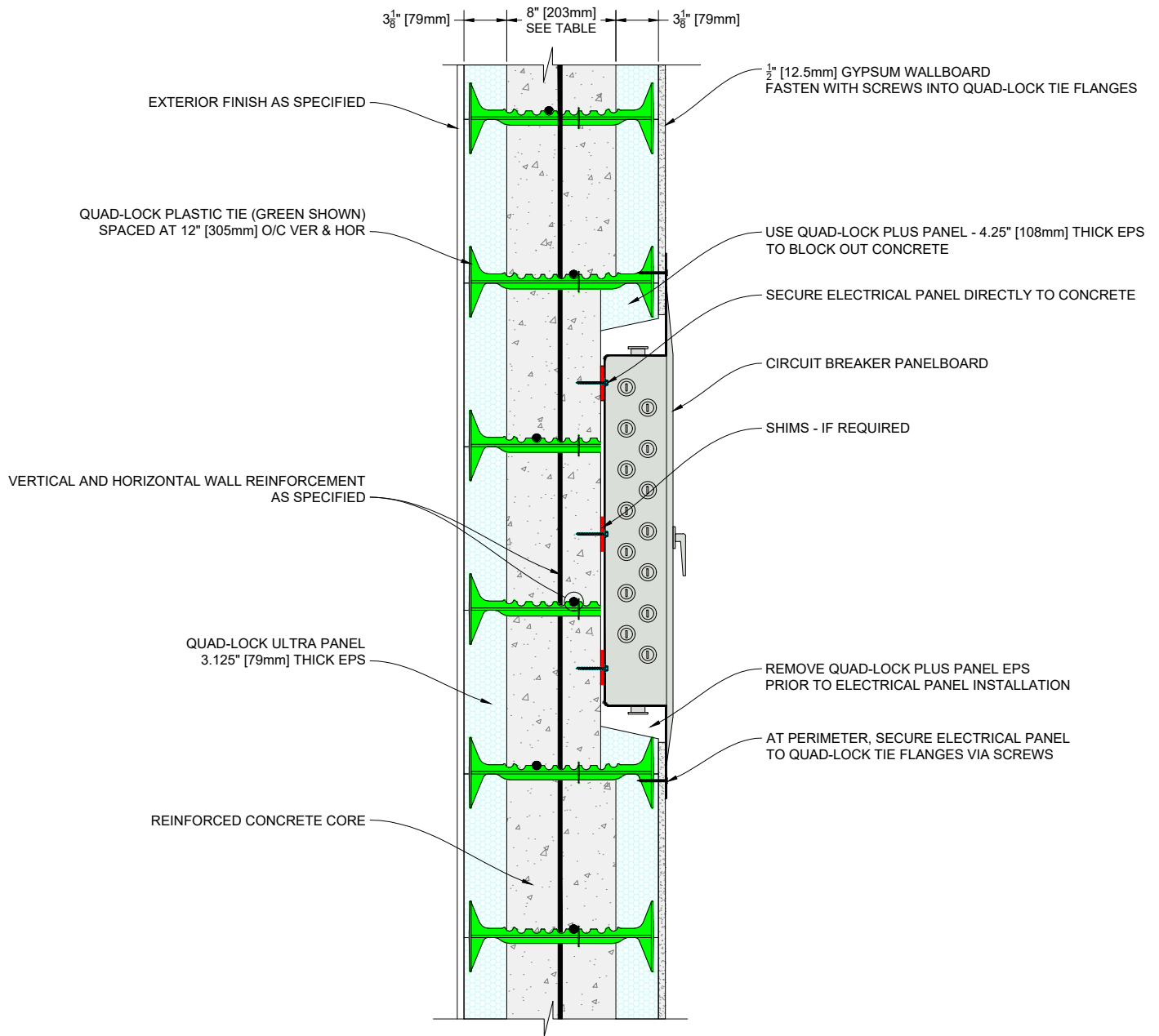
IT IS THE RESPONSIBILITY OF THE USER TO COMPLY WITH ALL APPLICABLE REGULATIONS AND BUILDING CODE REQUIREMENTS CONCERNING THE USE OF THESE PRODUCTS.

IT IS FURTHER THE RESPONSIBILITY OF THE USER TO RESEARCH AND UNDERSTAND SAFE METHODS OF USE AND HANDLING OF THESE PRODUCTS.

## HOLLOW CORE PRECAST PANELS PERPENDICULAR TO QUAD-LOCK

DATE DRAWN:	2018-06-01	SCALE:	NOT TO SCALE
REVISION NO:	N/A	SHEET SIZE:	8.5" x 11" [216mm x 279mm]
REVISION DATE:	YYYY-MM-DD	APPROVED ON:	2018-06-04
DRAWN BY:	Z. PROSTRAN	APPROVED BY:	G. KUSTERMANN
			QLU-616

QUAD-LOCK R-28 [U-0.21] WALL	
TIE NAME	CONCRETE CORE THICKNESS
BLUE TIE = 4" [102mm]	
YELLOW TIE = 6" [152mm]	
GREEN TIE = 8" [203mm]	
RED TIE = 10" [254mm]	
BROWN TIE = 12" [305mm]	
BLACK TIE + XT = 14" [356mm]	
ETC.	



**QUAD-LOCK®**  
Building Systems

Quad-Lock Building Systems  
7398 - 132nd Street  
Surrey, BC V3W 4M7  
Canada  
888.711.5625 - Toll Free  
604.590.3111  
604.590.8412 - fax  
www.quadlock.com

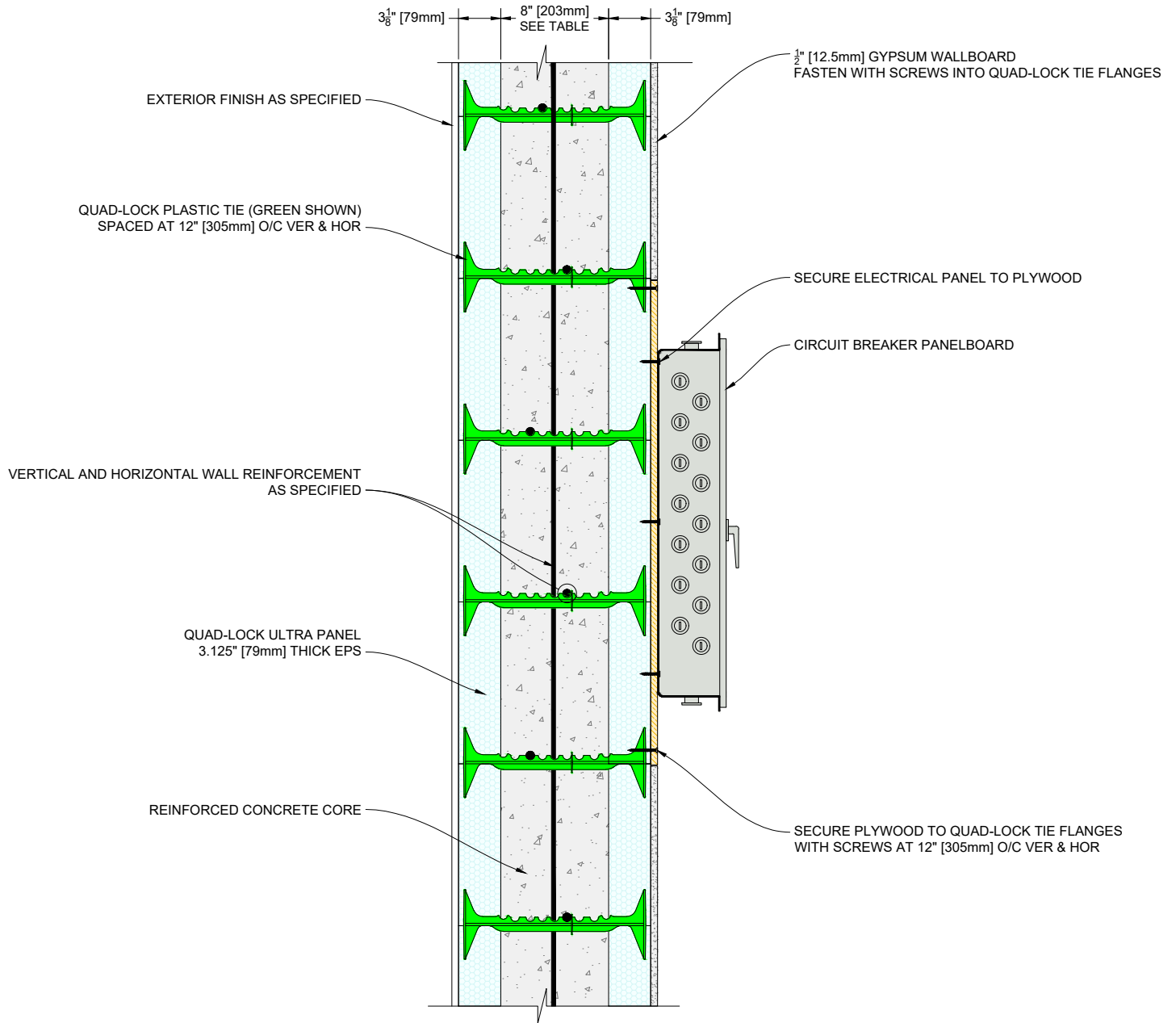
IT IS THE RESPONSIBILITY OF THE USER TO COMPLY WITH ALL APPLICABLE REGULATIONS AND BUILDING CODE REQUIREMENTS CONCERNING THE USE OF THESE PRODUCTS.

IT IS FURTHER THE RESPONSIBILITY OF THE USER TO RESEARCH AND UNDERSTAND SAFE METHODS OF USE AND HANDLING OF THESE PRODUCTS.

## FLUSH MOUNTED CIRCUIT BREAKER PANELBOARD

DATE DRAWN:	2018-06-01	SCALE:	NOT TO SCALE
REVISION NO:	N/A	SHEET SIZE:	8.5" x 11" [216mm x 279mm]
REVISION DATE:	YYYY-MM-DD	APPROVED ON:	2018-06-04
DRAWN BY:	Z. PROSTRAN	APPROVED BY:	G. KUSTERMANN
			DRAWING NO: <b>QLU-617</b>

QUAD-LOCK R-28 [U-0.21] WALL	
TIE NAME	CONCRETE CORE THICKNESS
BLUE TIE = 4" [102mm]	
YELLOW TIE = 6" [152mm]	
GREEN TIE = 8" [203mm]	
RED TIE = 10" [254mm]	
BROWN TIE = 12" [305mm]	
BLACK TIE + XT = 14" [356mm]	
ETC.	



**QUAD-LOCK®**  
Building Systems

Quad-Lock Building Systems  
7398 - 132nd Street  
Surrey, BC V3W 4M7  
Canada  
888.711.5625 - Toll Free  
604.590.3111  
604.590.8412 - fax  
www.quadlock.com

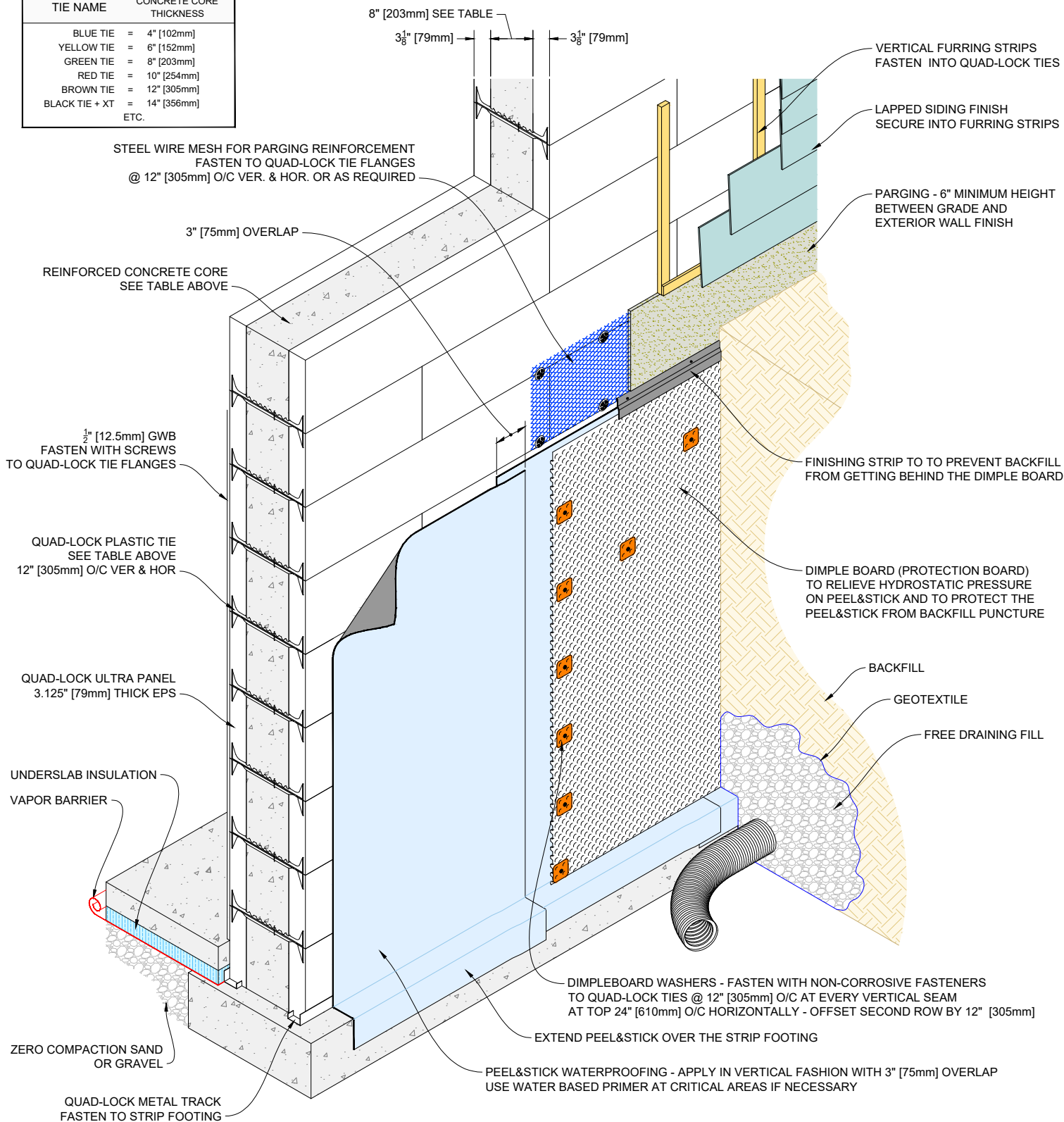
IT IS THE RESPONSIBILITY OF THE USER TO COMPLY WITH ALL APPLICABLE REGULATIONS AND BUILDING CODE REQUIREMENTS CONCERNING THE USE OF THESE PRODUCTS.  
IT IS FURTHER THE RESPONSIBILITY OF THE USER TO RESEARCH AND UNDERSTAND SAFE METHODS OF USE AND HANDLING OF THESE PRODUCTS.

## FACE MOUNTED CIRCUIT BREAKER PANELBOARD

DATE DRAWN:	2018-06-01	SCALE:	NOT TO SCALE
REVISION NO:	N/A	SHEET SIZE:	8.5" x 11" [216mm x 279mm]
REVISION DATE:	YYYY-MM-DD	APPROVED ON:	2018-06-04
DRAWN BY:	Z. PROSTRAN	APPROVED BY:	G. KUSTERMAN
			DRAWING NO: <b>QLU-618</b>



QUAD-LOCK R-28 [U-0.21] WALL	
TIE NAME	CONCRETE CORE THICKNESS
BLUE TIE	= 4" [102mm]
YELLOW TIE	= 6" [152mm]
GREEN TIE	= 8" [203mm]
RED TIE	= 10" [254mm]
BROWN TIE	= 12" [305mm]
BLACK TIE + XT	= 14" [356mm]
ETC.	



**QUAD-LOCK**<sup>®</sup>  
Building Systems

Quad-Lock Building Systems  
7398 - 132nd Street  
Surrey, BC V3W 4M7  
Canada  
888.711.5625 - Toll Free  
604.590.3111  
604.590.8412 - fax  
www.quadlock.com

IT IS THE RESPONSIBILITY OF THE USER TO COMPLY WITH ALL APPLICABLE REGULATIONS AND BUILDING CODE REQUIREMENTS CONCERNING THE USE OF THESE PRODUCTS.

IT IS FURTHER THE RESPONSIBILITY OF THE USER TO RESEARCH AND UNDERSTAND SAFE METHODS OF USE AND HANDLING OF THESE PRODUCTS.

## QUAD-LOCK WATER PROOFING DETAIL HIGH HYDROSTATIC PRESSURE

DATE DRAWN:	2018-06-01	SCALE:	NOT TO SCALE
REVISION NO:	N/A	SHEET SIZE:	8.5" x 11" [216mm x 279mm]
REVISION DATE:	YYYY-MM-DD	APPROVED ON:	2018-06-04
DRAWN BY:	Z. PROSTRAN	APPROVED BY:	G. KUSTERMANN
			QLU-619

# QUAD-LOCK R-28 [U-0.21] WALL

TIE NAME	CONCRETE CORE THICKNESS
BLUE TIE = 4" [102mm]	
YELLOW TIE = 6" [152mm]	
GREEN TIE = 8" [203mm]	
RED TIE = 10" [254mm]	
BROWN TIE = 12" [305mm]	
BLACK TIE + XT = 14" [356mm]	
ETC.	

8" [203mm] SEE TABLE

3 1/8" [79mm]

3 1/8" [79mm]

VERTICAL FURRING STRIPS  
FASTEN INTO QUAD-LOCK TIES

LAPPED SIDING FINISH  
SECURE INTO FURRING STRIPS

PARGING - 6" MINIMUM HEIGHT  
BETWEEN GRADE AND  
EXTERIOR WALL FINISH

STEEL WIRE MESH FOR PARGING REINFORCEMENT  
FASTEN TO QUAD-LOCK TIE FLANGES  
@ 12" [305mm] O/C VER. & HOR. OR AS REQUIRED

3" [75mm] OVERLAP

REINFORCED CONCRETE CORE  
SEE TABLE ABOVE

1/2" [12.5mm] GWB  
FASTEN WITH SCREWS  
TO QUAD-LOCK TIE FLANGES

QUAD-LOCK PLASTIC TIE  
SEE TABLE ABOVE  
12" [305mm] O/C VER & HOR

QUAD-LOCK ULTRA PANEL  
3.125" [79mm] THICK EPS

UNDERSLAB INSULATION  
VAPOR BARRIER

ZERO COMPACTION SAND  
OR GRAVEL

QUAD-LOCK METAL TRACK  
FASTEN TO STRIP FOOTING

EXTEND PEEL&STICK OVER THE STRIP FOOTING

PEEL&STICK WATERPROOFING - APPLY IN VERTICAL FASHION WITH 3" [75mm] OVERLAP  
USE WATER BASED PRIMER AT CRITICAL AREAS IF NECESSARY

BACKFILL

GEOTEXTILE

FREE DRAINING FILL

**QUAD-LOCK®**  
Building Systems

Quad-Lock Building Systems  
7398 - 132nd Street  
Surrey, BC V3W 4M7  
Canada  
888.711.5625 - Toll Free  
604.590.3111  
604.590.8412 - fax  
www.quadlock.com

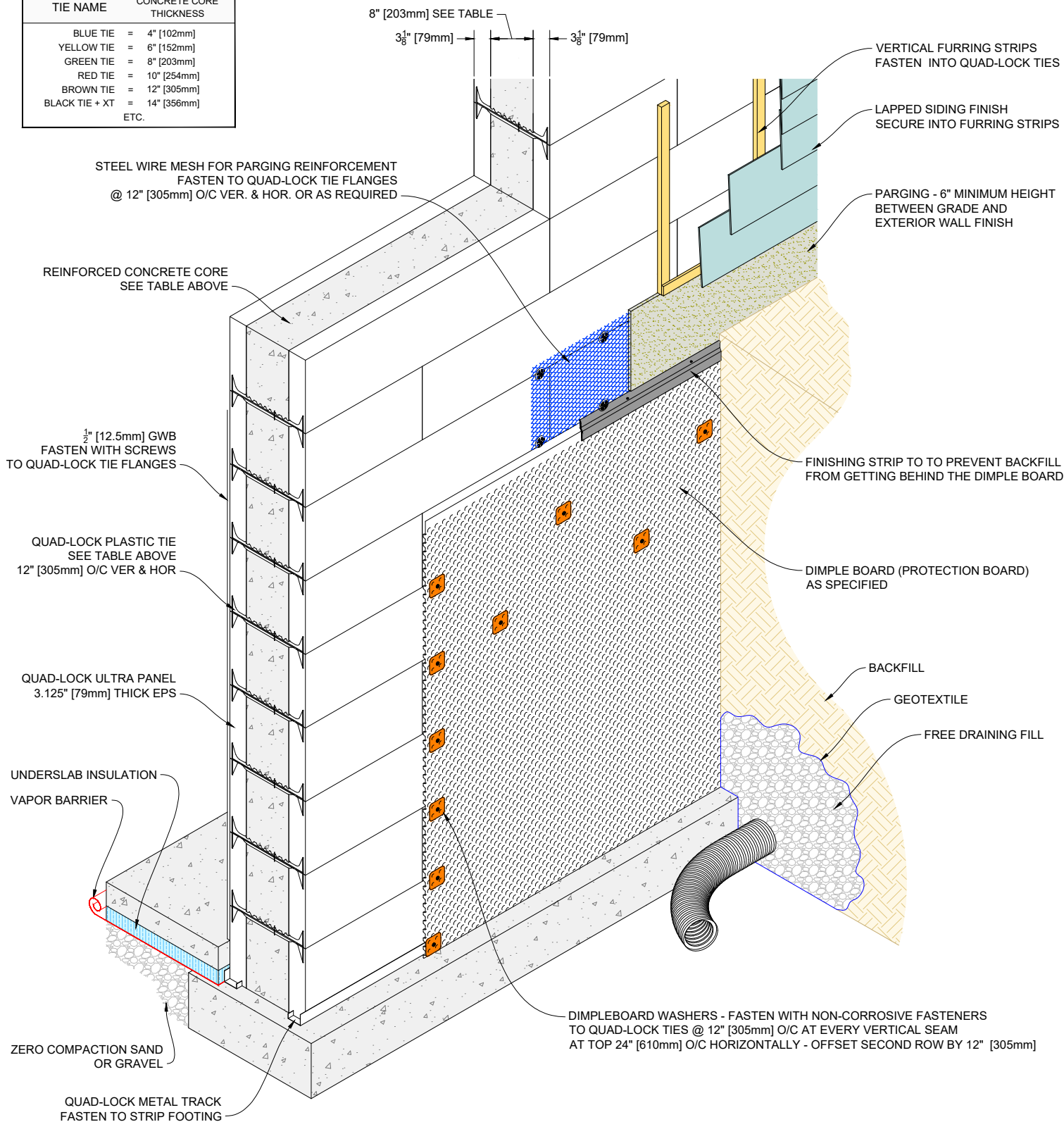
IT IS THE RESPONSIBILITY OF THE USER TO COMPLY WITH ALL APPLICABLE  
REGULATIONS AND BUILDING CODE REQUIREMENTS CONCERNING THE USE OF  
THESE PRODUCTS.

IT IS FURTHER THE RESPONSIBILITY OF THE USER TO RESEARCH AND UNDERSTAND  
SAFE METHODS OF USE AND HANDLING OF THESE PRODUCTS.

## QUAD-LOCK WATER PROOFING DETAIL

DATE DRAWN:	2018-06-01	SCALE:	NOT TO SCALE
REVISION NO:	N/A	SHEET SIZE:	8.5" x 11" [216mm x 279mm]
REVISION DATE:	YYYY-MM-DD	APPROVED ON:	2018-06-04
DRAWN BY:	Z. PROSTRAN	APPROVED BY:	G. KUSTERMANN
			DRAWING NO: <b>QLU-620</b>

QUAD-LOCK R-28 [U-0.21] WALL	
TIE NAME	CONCRETE CORE THICKNESS
BLUE TIE	= 4" [102mm]
YELLOW TIE	= 6" [152mm]
GREEN TIE	= 8" [203mm]
RED TIE	= 10" [254mm]
BROWN TIE	= 12" [305mm]
BLACK TIE + XT	= 14" [356mm]
ETC.	



**QUAD-LOCK®**  
Building Systems

Quad-Lock Building Systems  
7398 - 132nd Street  
Surrey, BC V3W 4M7  
Canada  
888.711.5625 - Toll Free  
604.590.3111  
604.590.8412 - fax  
www.quadlock.com

IT IS THE RESPONSIBILITY OF THE USER TO COMPLY WITH ALL APPLICABLE REGULATIONS AND BUILDING CODE REQUIREMENTS CONCERNING THE USE OF THESE PRODUCTS.

IT IS FURTHER THE RESPONSIBILITY OF THE USER TO RESEARCH AND UNDERSTAND SAFE METHODS OF USE AND HANDLING OF THESE PRODUCTS.

## QUAD-LOCK DAMP PROOFING DETAIL

DATE DRAWN:	2018-06-01	SCALE:	NOT TO SCALE
REVISION NO:	N/A	SHEET SIZE:	8.5" x 11" [216mm x 279mm]
REVISION DATE:	YYYY-MM-DD	APPROVED ON:	2018-06-04
DRAWN BY:	Z. PROSTRAN	APPROVED BY:	G. KUSTERMANN
			QLU-621