

| QUAD-LOCK R-28 [U-0.21] WALL | |
|------------------------------|-------------------------|
| TIE NAME | CONCRETE CORE THICKNESS |
| BLUE TIE = 4" [102mm] | |
| YELLOW TIE = 6" [152mm] | |
| GREEN TIE = 8" [203mm] | |
| RED TIE = 10" [254mm] | |
| BROWN TIE = 12" [305mm] | |
| BLACK TIE + XT = 14" [356mm] | |
| ETC. | |

QUAD-LOCK®
Building Systems

Quad-Lock Building Systems
7398 - 132nd Street
Surrey, BC V3W 4M7
Canada
888.711.5625 - Toll Free
604.590.3111
604.590.8412 - fax
www.quadlock.com

IT IS THE RESPONSIBILITY OF THE USER TO COMPLY WITH ALL APPLICABLE REGULATIONS AND BUILDING CODE REQUIREMENTS CONCERNING THE USE OF THESE PRODUCTS.

IT IS FURTHER THE RESPONSIBILITY OF THE USER TO RESEARCH AND UNDERSTAND SAFE METHODS OF USE AND HANDLING OF THESE PRODUCTS.

QUAD-LOCK 90° CORNER DETAIL

| | | | |
|----------------|-------------|--------------|----------------------------|
| DATE DRAWN: | 2018-06-01 | SCALE: | NOT TO SCALE |
| REVISION NO.: | N/A | SHEET SIZE: | 8.5" x 11" [216mm x 279mm] |
| REVISION DATE: | YYYY-MM-DD | APPROVED ON: | 2018-06-04 |
| DRAWN BY: | Z. PROSTRAN | APPROVED BY: | G. KUSTERMANN |
| | | | QLU-701 |

3 $\frac{1}{8}$ " [79mm] 8" [203mm] SEE TABLE 3 $\frac{1}{8}$ " [79mm]

QUAD-LOCK R-28 [U-0.21] WALL

| TIE NAME | CONCRETE CORE THICKNESS |
|----------------|-------------------------|
| BLUE TIE | = 4" [102mm] |
| YELLOW TIE | = 6" [152mm] |
| GREEN TIE | = 8" [203mm] |
| RED TIE | = 10" [254mm] |
| BROWN TIE | = 12" [305mm] |
| BLACK TIE + XT | = 14" [356mm] |
| ETC. | |

QUAD-LOCK ULTRA PANEL
3.125" [79mm] THICK EPS

QUAD-LOCK PLASTIC TIE (GREEN SHOWN)
SPACED AT 12" [305mm] O/C VER & HOR

QUAD-LOCK PLASTIC TIE (YELLOW SHOWN)
SPACED AT 12" [305mm] O/C VER & HOR

2 x QUAD-LOCK OUTSIDE CORNER BRACKET

2 x QUAD-LOCK INSIDE CORNER BRACKET

3 $\frac{1}{8}$ " [79mm]
6" [152mm] SEE TABLE
3 $\frac{1}{8}$ " [79mm]

CORNER DOWELS - ALTERNATE LEFT TO RIGHT OR AS SPECIFIED
OVERLAP AS SPECIFIED

EXTERIOR WALL FINISH AS SPECIFIED

HORIZONTAL WALL REINFORCEMENT AS SPECIFIED

VERTICAL WALL REINFORCEMENT AS SPECIFIED

1 $\frac{1}{2}$ " [12.5mm] GYPSUM WALLBOARD
FASTEN WITH SCREWS INTO QUAD-LOCK TIE FLANGES

QUAD-LOCK®
Building Systems

Quad-Lock Building Systems
7398 - 132nd Street
Surrey, BC V3W 4M7
Canada
888.711.5625 - Toll Free
604.590.3111
604.590.8412 - fax
www.quadlock.com

IT IS THE RESPONSIBILITY OF THE USER TO COMPLY WITH ALL APPLICABLE
REGULATIONS AND BUILDING CODE REQUIREMENTS CONCERNING THE USE OF
THESE PRODUCTS.

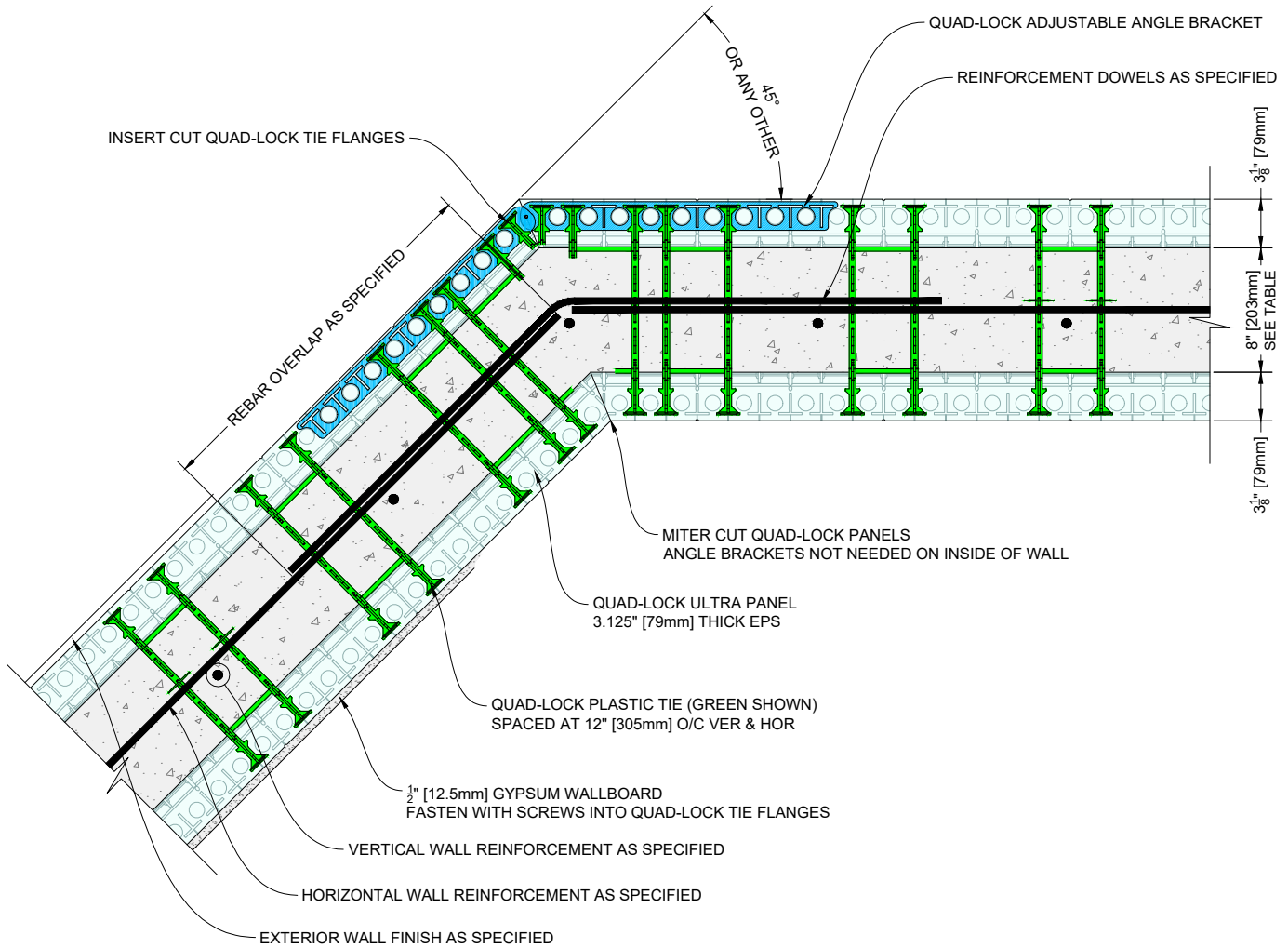
IT IS FURTHER THE RESPONSIBILITY OF THE USER TO RESEARCH AND UNDERSTAND
SAFE METHODS OF USE AND HANDLING OF THESE PRODUCTS.

QUAD-LOCK T-WALL DETAIL

| | | | |
|----------------|-------------|--------------|----------------------------|
| DATE DRAWN: | 2018-06-01 | SCALE: | NOT TO SCALE |
| REVISION NO.: | N/A | SHEET SIZE: | 8.5" x 11" [216mm x 279mm] |
| REVISION DATE: | YYYY-MM-DD | APPROVED ON: | 2018-06-04 |
| DRAWN BY: | Z. PROSTRAN | APPROVED BY: | G. KUSTERMAN |
| | | | DRAWING NO. QLU-702 |

QUAD-LOCK R-28 [U-0.21] WALL

| TIE NAME | CONCRETE CORE THICKNESS |
|------------------|-------------------------|
| BLUE TIE = | 4" [102mm] |
| YELLOW TIE = | 6" [152mm] |
| GREEN TIE = | 8" [203mm] |
| RED TIE = | 10" [254mm] |
| BROWN TIE = | 12" [305mm] |
| BLACK TIE + XT = | 14" [356mm] |
| ETC. | |



QUAD-LOCK®
Building Systems

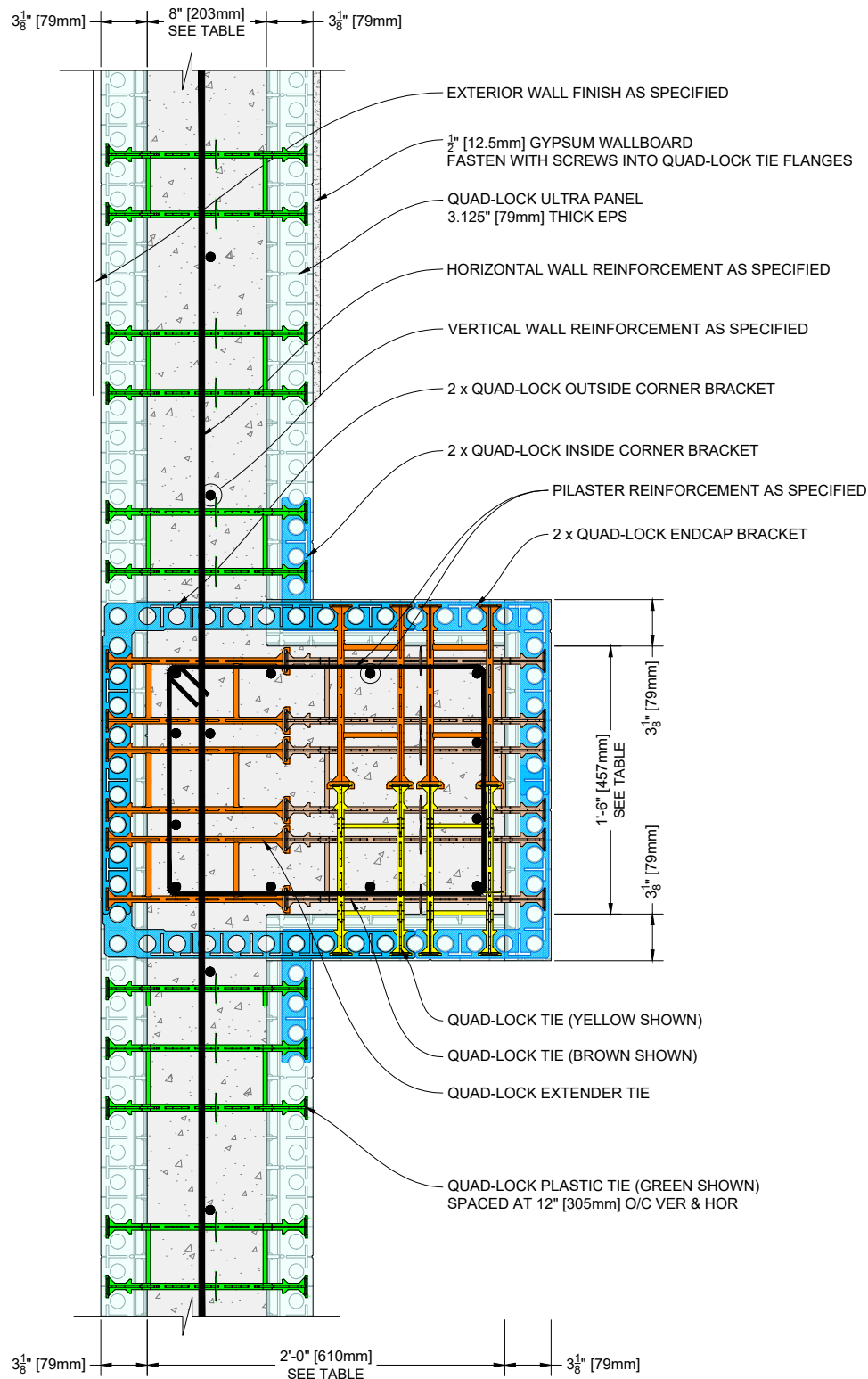
Quad-Lock Building Systems
7398 - 132nd Street
Surrey, BC V3W 4M7
Canada
888.711.5625 - Toll Free
604.590.3111
604.590.8412 - fax
www.quadlock.com

IT IS THE RESPONSIBILITY OF THE USER TO COMPLY WITH ALL APPLICABLE REGULATIONS AND BUILDING CODE REQUIREMENTS CONCERNING THE USE OF THESE PRODUCTS.

IT IS FURTHER THE RESPONSIBILITY OF THE USER TO RESEARCH AND UNDERSTAND SAFE METHODS OF USE AND HANDLING OF THESE PRODUCTS.

QUAD-LOCK NON-90° ANGLE DETAIL

| | | | |
|----------------|-------------|--------------|----------------------------|
| DATE DRAWN: | 2018-06-01 | SCALE: | NOT TO SCALE |
| REVISION NO: | N/A | SHEET SIZE: | 8.5" x 11" [216mm x 279mm] |
| REVISION DATE: | YYYY-MM-DD | APPROVED ON: | 2018-06-04 |
| DRAWN BY: | Z. PROSTRAN | APPROVED BY: | G. KUSTERMANN |
| | | | DRAWING NO: |
| | | | QLU-703 |



| QUAD-LOCK R-28 [U-0.21] WALL | |
|------------------------------|-------------------------|
| TIE NAME | CONCRETE CORE THICKNESS |
| BLUE TIE | = 4" [102mm] |
| YELLOW TIE | = 6" [152mm] |
| GREEN TIE | = 8" [203mm] |
| RED TIE | = 10" [254mm] |
| BROWN TIE | = 12" [305mm] |
| XT + BLACK TIE | = 14" [356mm] |
| XT + BLUE TIE | = 16" [406mm] |
| XT + YELLOW TIE | = 18" [457mm] |
| XT + GREEN TIE | = 20" [508mm] |
| XT + RED TIE | = 22" [559mm] |
| XT + BROWN TIE | = 24" [610mm] |
| XT + XT + BLACK TIE | = 26" [660mm] |
| XT + XT + BLUE TIE | = 28" [711mm] |
| ETC. | |

QUAD-LOCK®
Building Systems

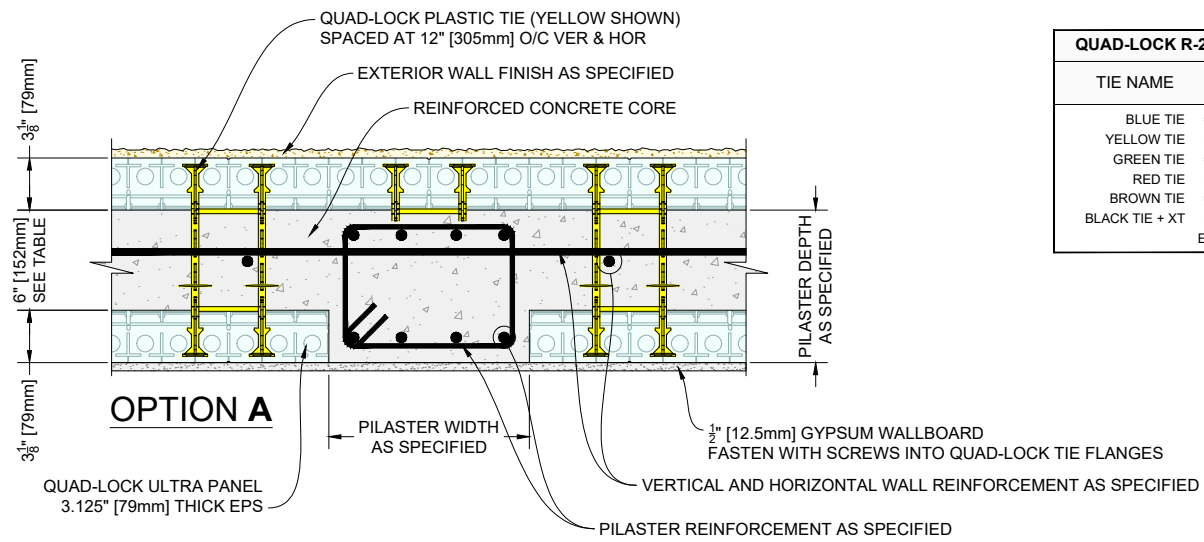
Quad-Lock Building Systems
7398 - 132nd Street
Surrey, BC V3W 4M7
Canada
888.711.5625 - Toll Free
604.590.3111
604.590.8412 - fax
www.quadlock.com

IT IS THE RESPONSIBILITY OF THE USER TO COMPLY WITH ALL APPLICABLE REGULATIONS AND BUILDING CODE REQUIREMENTS CONCERNING THE USE OF THESE PRODUCTS.

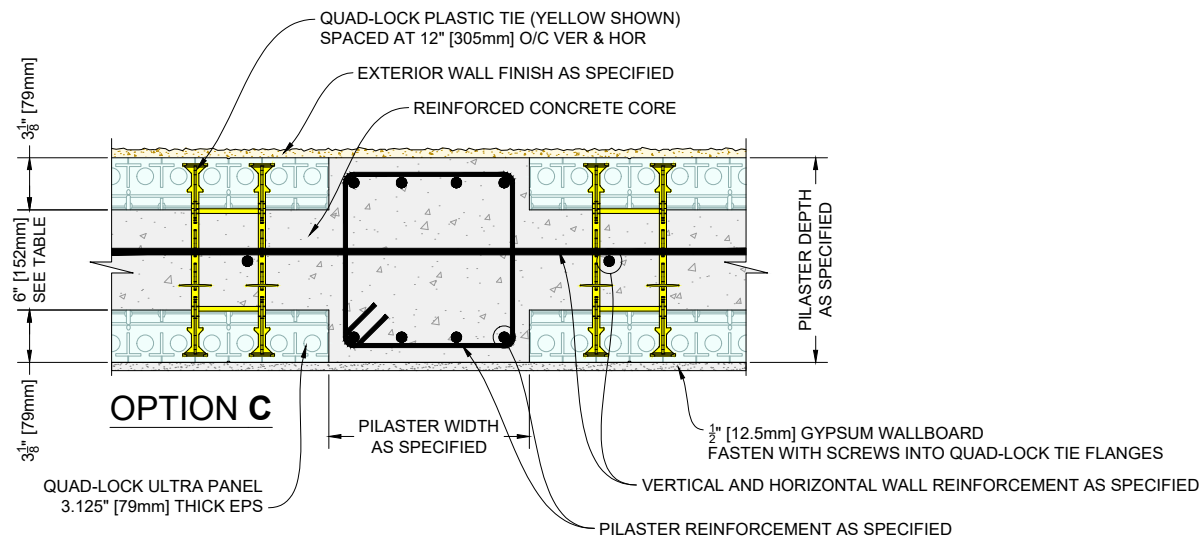
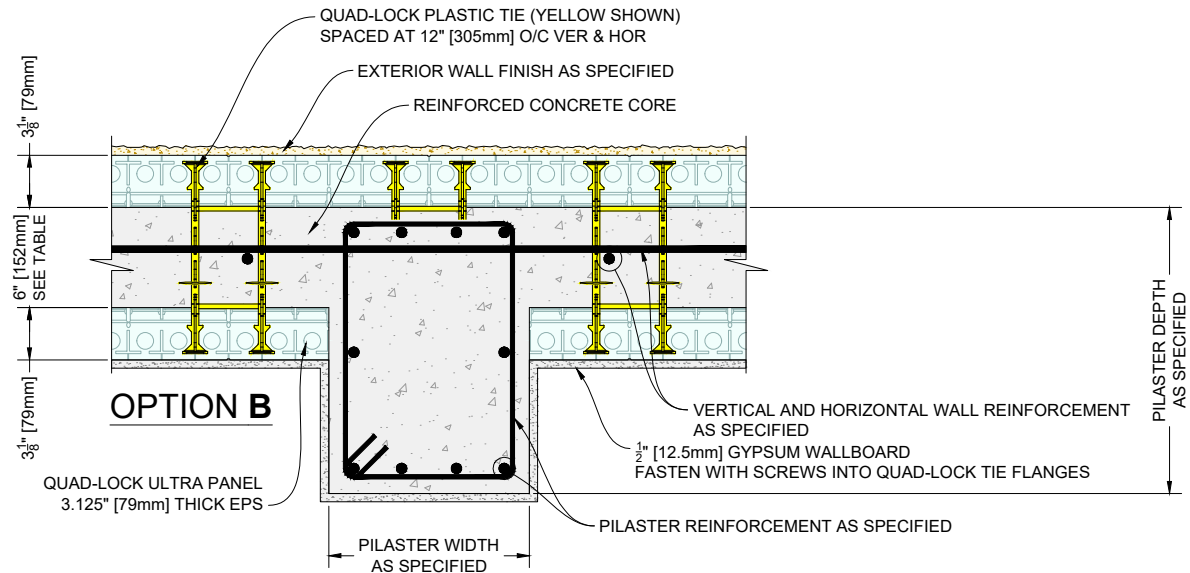
IT IS FURTHER THE RESPONSIBILITY OF THE USER TO RESEARCH AND UNDERSTAND SAFE METHODS OF USE AND HANDLING OF THESE PRODUCTS.

QUAD-LOCK FORMED PILASTER DETAIL

| | | | |
|----------------|-------------|--------------|----------------------------|
| DATE DRAWN: | 2018-06-01 | SCALE: | NOT TO SCALE |
| REVISION NO.: | N/A | SHEET SIZE: | 8.5" x 11" [216mm x 279mm] |
| REVISION DATE: | YYYY-MM-DD | APPROVED ON: | 2018-06-04 |
| DRAWN BY: | Z. PROSTRAN | APPROVED BY: | G. KUSTERMAN |
| | | | QLU-704 |



| QUAD-LOCK R-28 [U-0.21] WALL | |
|------------------------------|-------------------------|
| TIE NAME | CONCRETE CORE THICKNESS |
| BLUE TIE | = 4" [102mm] |
| YELLOW TIE | = 6" [152mm] |
| GREEN TIE | = 8" [203mm] |
| RED TIE | = 10" [254mm] |
| BROWN TIE | = 12" [305mm] |
| BLACK TIE + XT | = 14" [356mm] |
| ETC. | |



QUAD-LOCK®
Building Systems

Quad-Lock Building Systems
7398 - 132nd Street
Surrey, BC V3W 4M7
Canada
888.711.5625 - Toll Free
604.590.3111
604.590.8412 - fax
www.quadlock.com

IT IS THE RESPONSIBILITY OF THE USER TO COMPLY WITH ALL APPLICABLE REGULATIONS AND BUILDING CODE REQUIREMENTS CONCERNING THE USE OF THESE PRODUCTS.

IT IS FURTHER THE RESPONSIBILITY OF THE USER TO RESEARCH AND UNDERSTAND SAFE METHODS OF USE AND HANDLING OF THESE PRODUCTS.

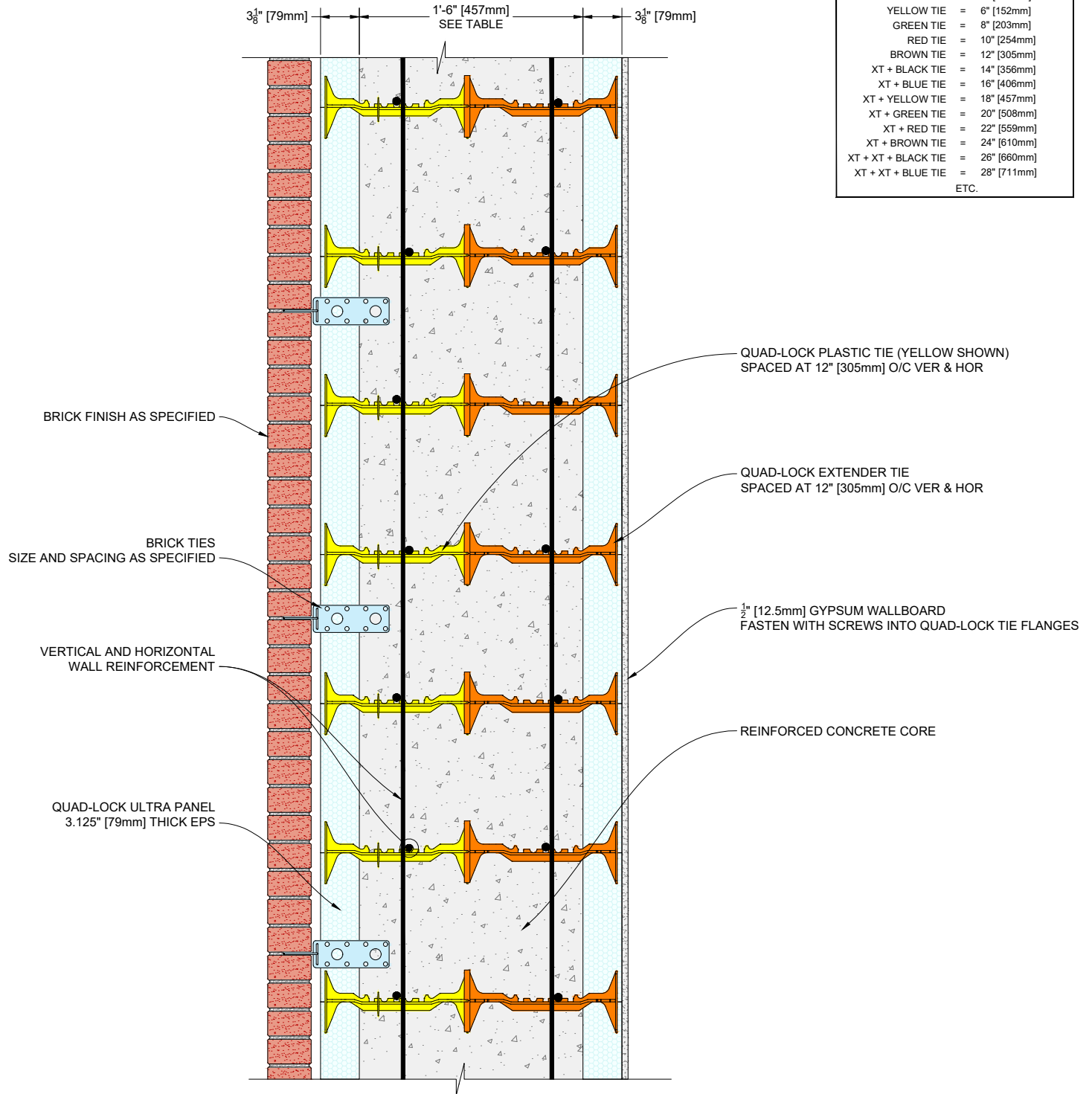
QUAD-LOCK PILASTER DETAILS

CONVENTIONALLY FORMED

| | | | |
|----------------|-------------|--------------|----------------------------|
| DATE DRAWN: | 2018-06-01 | SCALE: | NOT TO SCALE |
| REVISION NO: | N/A | SHEET SIZE: | 8.5" x 11" [216mm x 279mm] |
| REVISION DATE: | YYYY-MM-DD | APPROVED ON: | 2018-06-04 |
| DRAWN BY: | Z. PROSTRAN | APPROVED BY: | G. KUSTERMANN |
| | | | QLU-705 |

QUAD-LOCK R-28 [U-0.21] WALL

| TIE NAME | CONCRETE CORE THICKNESS |
|---------------------|-------------------------|
| BLUE TIE | = 4" [102mm] |
| YELLOW TIE | = 6" [152mm] |
| GREEN TIE | = 8" [203mm] |
| RED TIE | = 10" [254mm] |
| BROWN TIE | = 12" [305mm] |
| XT + BLACK TIE | = 14" [356mm] |
| XT + BLUE TIE | = 16" [406mm] |
| XT + YELLOW TIE | = 18" [457mm] |
| XT + GREEN TIE | = 20" [508mm] |
| XT + RED TIE | = 22" [559mm] |
| XT + BROWN TIE | = 24" [610mm] |
| XT + XT + BLACK TIE | = 26" [660mm] |
| XT + XT + BLUE TIE | = 28" [711mm] |
| ETC. | |



QUAD-LOCK[®]
Building Systems

Quad-Lock Building Systems
7398 - 132nd Street
Surrey, BC V3W 4M7
Canada
888.711.5625 - Toll Free
604.590.3111
604.590.8412 - fax
www.quadlock.com

IT IS THE RESPONSIBILITY OF THE USER TO COMPLY WITH ALL APPLICABLE REGULATIONS AND BUILDING CODE REQUIREMENTS CONCERNING THE USE OF THESE PRODUCTS.

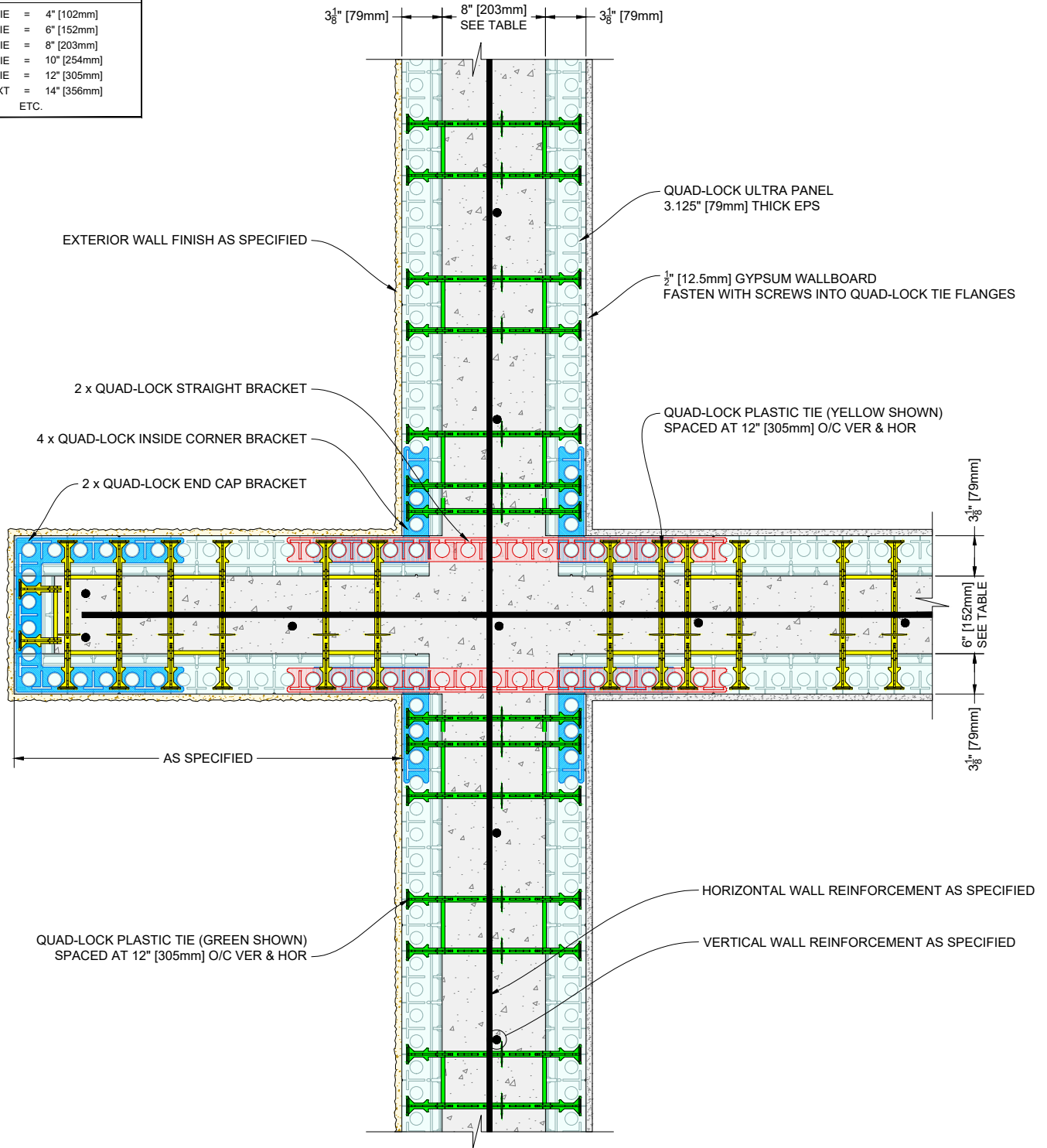
IT IS FURTHER THE RESPONSIBILITY OF THE USER TO RESEARCH AND UNDERSTAND SAFE METHODS OF USE AND HANDLING OF THESE PRODUCTS.

QUAD-LOCK WIDE WALL DETAIL

| | | | |
|----------------|-------------|--------------|----------------------------|
| DATE DRAWN: | 2018-06-01 | SCALE: | NOT TO SCALE |
| REVISION NO: | N/A | SHEET SIZE: | 8.5" x 11" [216mm x 279mm] |
| REVISION DATE: | YYYY-MM-DD | APPROVED ON: | 2018-06-04 |
| DRAWN BY: | Z. PROSTRAN | APPROVED BY: | G. KUSTERMAN |
| | | | QLU-706 |

QUAD-LOCK R-28 [U-0.21] WALL

| TIE NAME | CONCRETE CORE THICKNESS |
|------------------------------|-------------------------|
| BLUE TIE = 4" [102mm] | |
| YELLOW TIE = 6" [152mm] | |
| GREEN TIE = 8" [203mm] | |
| RED TIE = 10" [254mm] | |
| BROWN TIE = 12" [305mm] | |
| BLACK TIE + XT = 14" [356mm] | |
| ETC. | |



QUAD-LOCK®
Building Systems

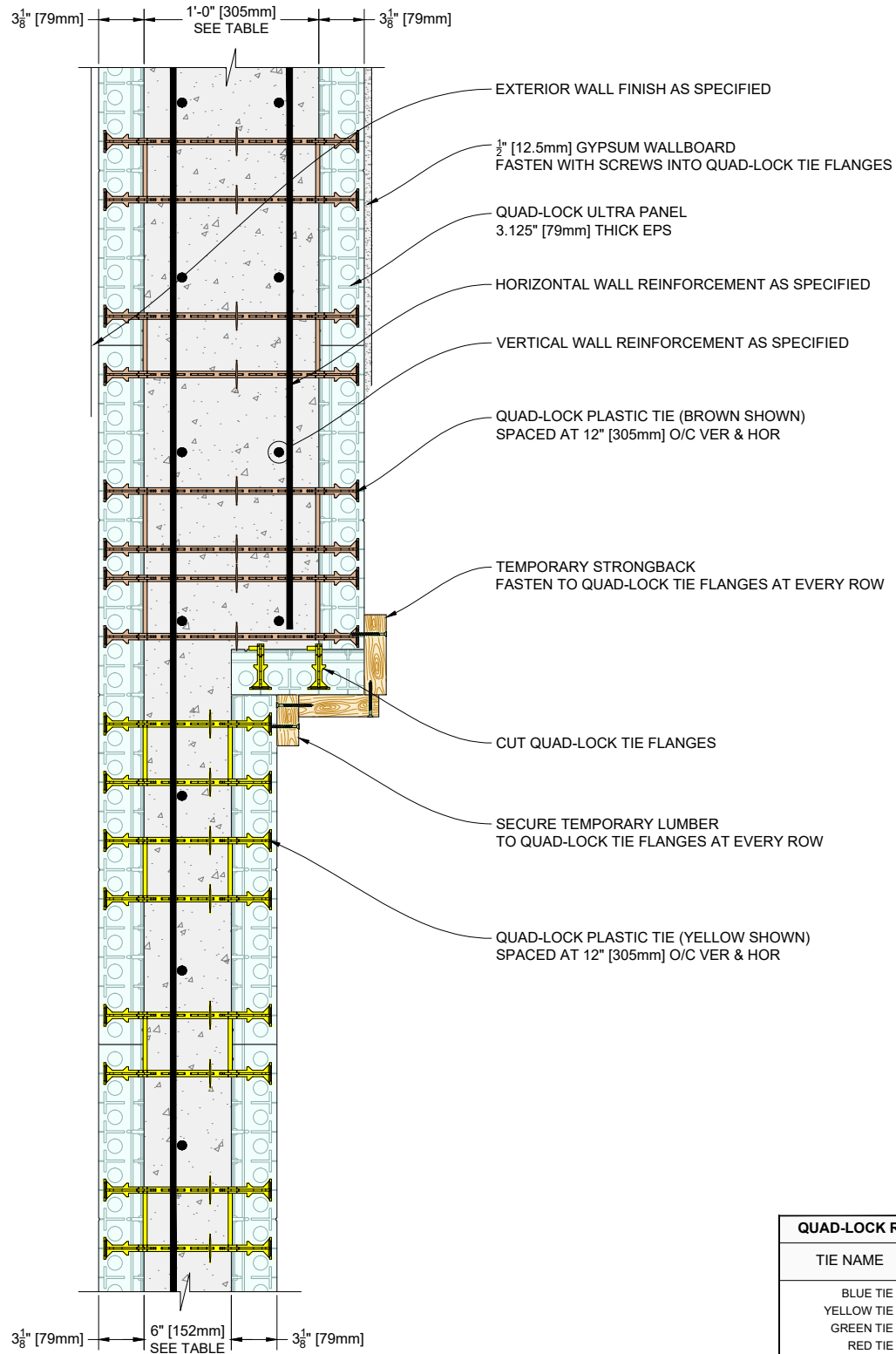
Quad-Lock Building Systems
7398 - 132nd Street
Surrey, BC V3W 4M7
Canada
888.711.5625 - Toll Free
604.590.3111
604.590.8412 - fax
www.quadlock.com

IT IS THE RESPONSIBILITY OF THE USER TO COMPLY WITH ALL APPLICABLE REGULATIONS AND BUILDING CODE REQUIREMENTS CONCERNING THE USE OF THESE PRODUCTS.

IT IS FURTHER THE RESPONSIBILITY OF THE USER TO RESEARCH AND UNDERSTAND SAFE METHODS OF USE AND HANDLING OF THESE PRODUCTS.

QUAD-LOCK 4-WAY INTERSECTION DETAIL

| | | | |
|----------------|-------------|--------------|-------------------------------|
| DATE DRAWN: | 2018-06-01 | SCALE: | NOT TO SCALE |
| REVISION NO: | N/A | SHEET SIZE: | 8.5" x 11" [216mm x 279mm] |
| REVISION DATE: | YYYY-MM-DD | APPROVED ON: | 2018-06-04 |
| DRAWN BY: | Z. PROSTRAN | APPROVED BY: | G. KUSTERMANN |
| | | | DRAWING NO: QLU-707 |



| QUAD-LOCK R-28 [U-0.21] WALL | |
|------------------------------|-------------------------|
| TIE NAME | CONCRETE CORE THICKNESS |
| BLUE TIE = | 4" [102mm] |
| YELLOW TIE = | 6" [152mm] |
| GREEN TIE = | 8" [203mm] |
| RED TIE = | 10" [254mm] |
| BROWN TIE = | 12" [305mm] |
| BLACK TIE + XT = | 14" [356mm] |
| ETC. | |

QUAD-LOCK®
Building Systems

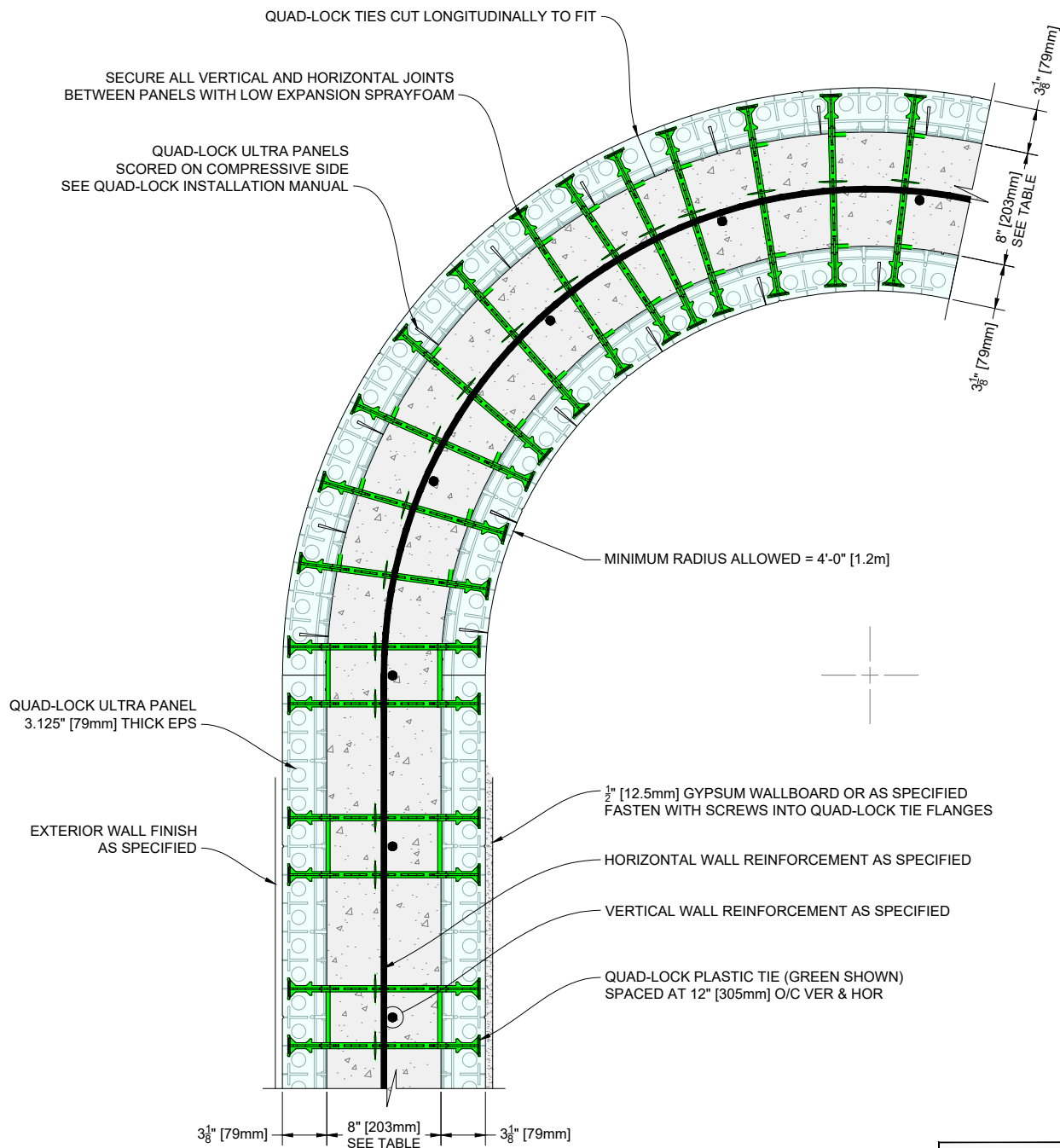
Quad-Lock Building Systems
7398 - 132nd Street
Surrey, BC V3W 4M7
Canada
888.711.5625 - Toll Free
604.590.3111
604.590.8412 - fax
www.quadlock.com

IT IS THE RESPONSIBILITY OF THE USER TO COMPLY WITH ALL APPLICABLE REGULATIONS AND BUILDING CODE REQUIREMENTS CONCERNING THE USE OF THESE PRODUCTS.

IT IS FURTHER THE RESPONSIBILITY OF THE USER TO RESEARCH AND UNDERSTAND SAFE METHODS OF USE AND HANDLING OF THESE PRODUCTS.

QUAD-LOCK WALL HORIZONTAL TRANSITION 12" [305mm] TO 6" [152mm] CONCRETE

| | | | |
|----------------|-------------|--------------|----------------------------|
| DATE DRAWN: | 2018-06-01 | SCALE: | NOT TO SCALE |
| REVISION NO.: | N/A | SHEET SIZE: | 8.5" x 11" [216mm x 279mm] |
| REVISION DATE: | YYYY-MM-DD | APPROVED ON: | 2018-06-04 |
| DRAWN BY: | Z. PROSTRAN | APPROVED BY: | G. KUSTERMAN |
| | | | QLU-708 |



| QUAD-LOCK R-28 [U-0.21] WALL | |
|------------------------------|-------------------------|
| TIE NAME | CONCRETE CORE THICKNESS |
| BLUE TIE = 4" [102mm] | |
| YELLOW TIE = 6" [152mm] | |
| GREEN TIE = 8" [203mm] | |
| RED TIE = 10" [254mm] | |
| BROWN TIE = 12" [305mm] | |
| BLACK TIE + XT = 14" [356mm] | |
| ETC. | |

QUAD-LOCK®
Building Systems

Quad-Lock Building Systems
7398 - 132nd Street
Surrey, BC V3W 4M7
Canada
888.711.5625 - Toll Free
604.590.3111
604.590.8412 - fax
www.quadlock.com

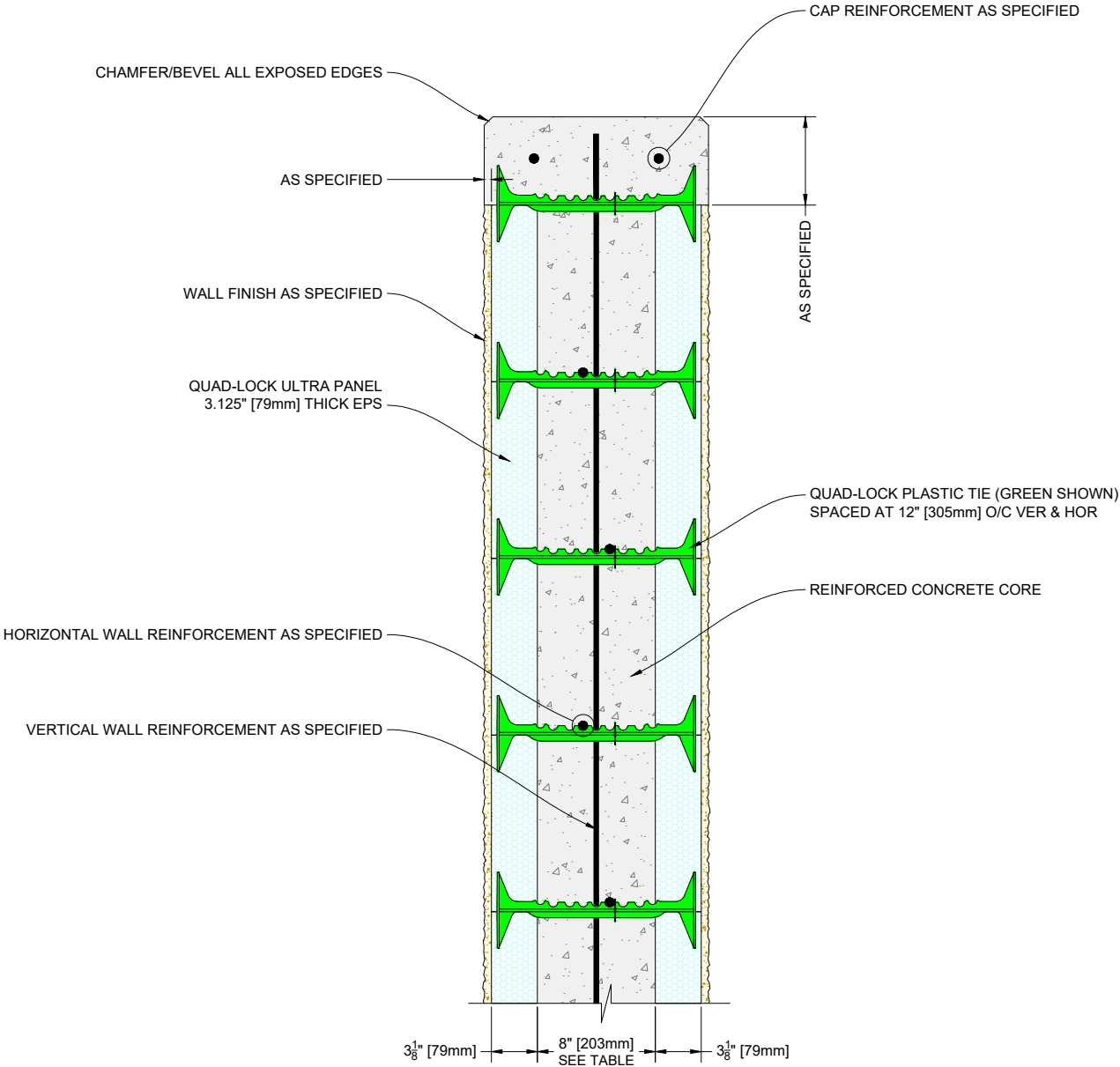
IT IS THE RESPONSIBILITY OF THE USER TO COMPLY WITH ALL APPLICABLE REGULATIONS AND BUILDING CODE REQUIREMENTS CONCERNING THE USE OF THESE PRODUCTS.

IT IS FURTHER THE RESPONSIBILITY OF THE USER TO RESEARCH AND UNDERSTAND SAFE METHODS OF USE AND HANDLING OF THESE PRODUCTS.

QUAD-LOCK RADIUS WALL DETAIL

| | | | |
|----------------|-------------|--------------|-------------------------------|
| DATE DRAWN: | 2018-06-01 | SCALE: | NOT TO SCALE |
| REVISION NO: | N/A | SHEET SIZE: | 8.5" x 11" [216mm x 279mm] |
| REVISION DATE: | YYYY-MM-DD | APPROVED ON: | 2018-06-04 |
| DRAWN BY: | Z. PROSTRAN | APPROVED BY: | G. KUSTERMANN |
| | | | DRAWING NO: QLU-709 |

| QUAD-LOCK R-28 [U-0.21] WALL | |
|------------------------------|-------------------------|
| TIE NAME | CONCRETE CORE THICKNESS |
| BLUE TIE = | 4" [102mm] |
| YELLOW TIE = | 6" [152mm] |
| GREEN TIE = | 8" [203mm] |
| RED TIE = | 10" [254mm] |
| BROWN TIE = | 12" [305mm] |
| BLACK TIE + XT = | 14" [356mm] |
| ETC. | |



Quad-Lock Building Systems
7398 - 132nd Street
Surrey, BC V3W 4M7
Canada

888.711.5625 - Toll Free
604.590.3111
604.590.8412 - fax
www.quadlock.com

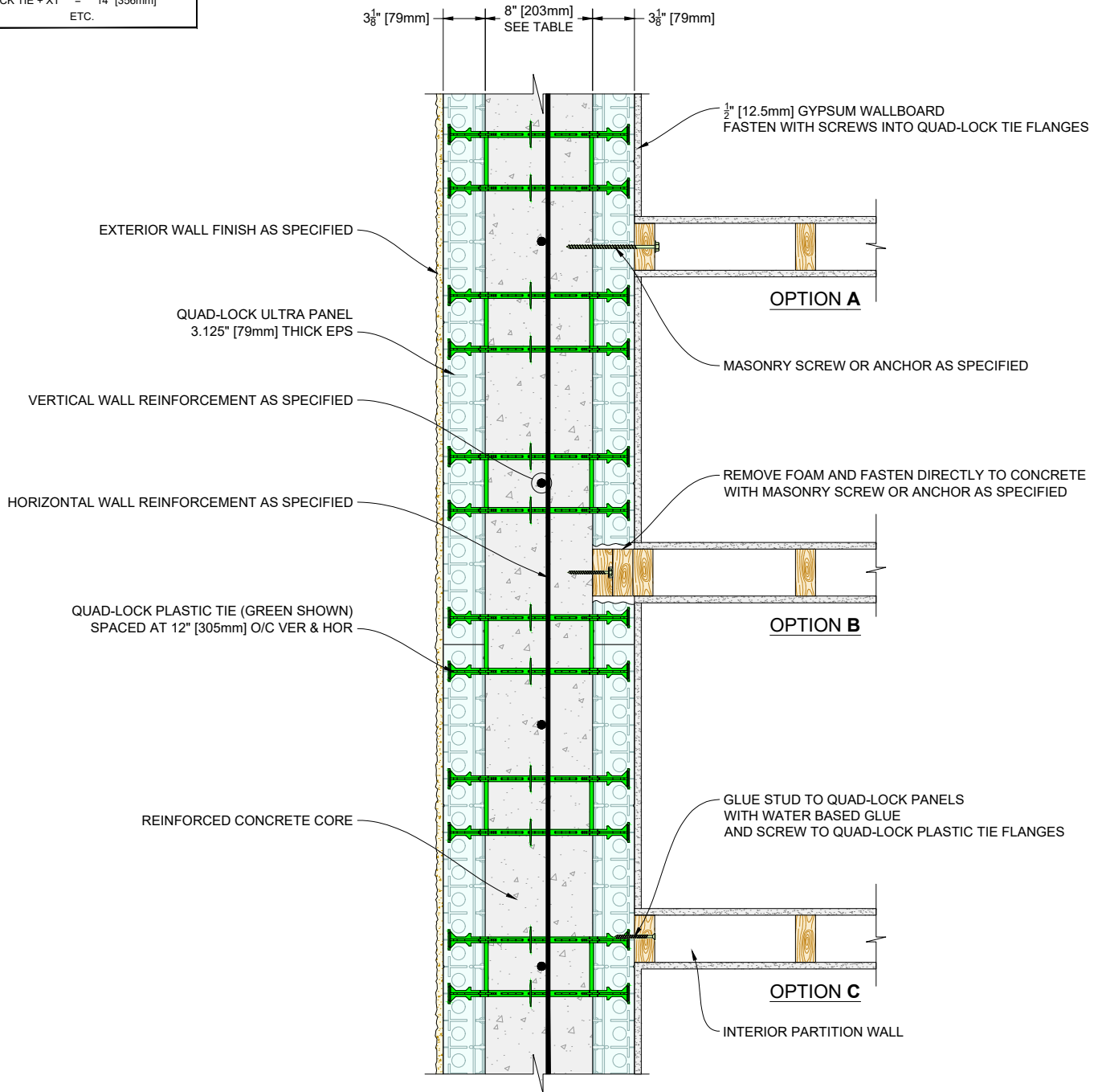
IT IS THE RESPONSIBILITY OF THE USER TO COMPLY WITH ALL APPLICABLE REGULATIONS AND BUILDING CODE REQUIREMENTS CONCERNING THE USE OF THESE PRODUCTS.
IT IS FURTHER THE RESPONSIBILITY OF THE USER TO RESEARCH AND UNDERSTAND SAFE METHODS OF USE AND HANDLING OF THESE PRODUCTS.

QUAD-LOCK WALL CAP DETAIL

| | | | |
|----------------|-------------|--------------|----------------------------|
| DATE DRAWN: | 2018-06-01 | SCALE: | NOT TO SCALE |
| REVISION NO: | N/A | SHEET SIZE: | 8.5" x 11" [216mm x 279mm] |
| REVISION DATE: | YYYY-MM-DD | APPROVED ON: | 2018-06-04 |
| DRAWN BY: | Z. PROSTRAN | APPROVED BY: | G. KUSTERMANN |
| | | | DRAWING NO: QLU-710 |

QUAD-LOCK R-28 [U-0.21] WALL

| TIE NAME | CONCRETE CORE THICKNESS |
|------------------------------|-------------------------|
| BLUE TIE = 4" [102mm] | |
| YELLOW TIE = 6" [152mm] | |
| GREEN TIE = 8" [203mm] | |
| RED TIE = 10" [254mm] | |
| BROWN TIE = 12" [305mm] | |
| BLACK TIE + XT = 14" [356mm] | |
| ETC. | |



QUAD-LOCK®
Building Systems

Quad-Lock Building Systems
7398 - 132nd Street
Surrey, BC V3W 4M7
Canada
888.711.5625 - Toll Free
604.590.3111
604.590.8412 - fax
www.quadlock.com

IT IS THE RESPONSIBILITY OF THE USER TO COMPLY WITH ALL APPLICABLE REGULATIONS AND BUILDING CODE REQUIREMENTS CONCERNING THE USE OF THESE PRODUCTS.

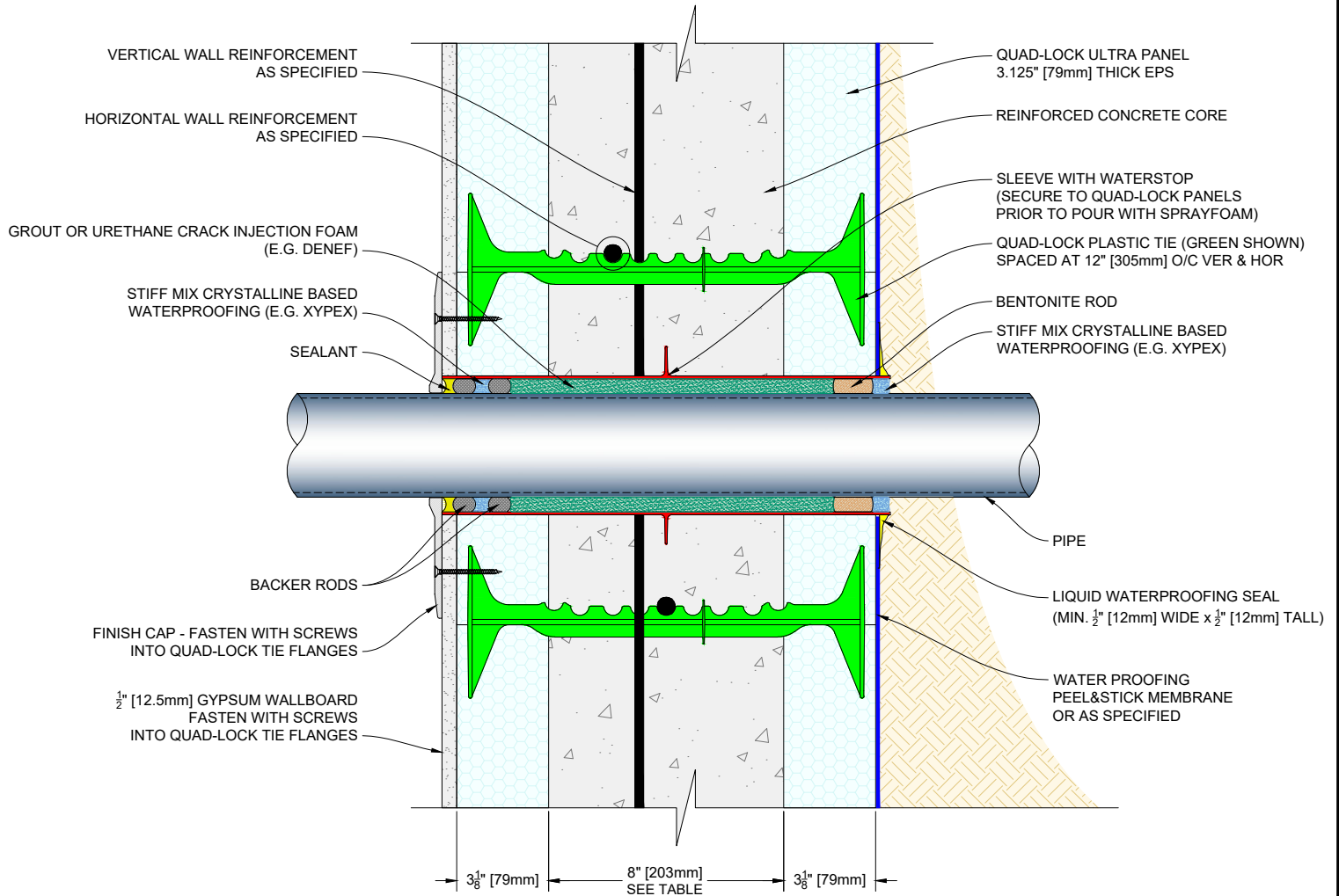
IT IS FURTHER THE RESPONSIBILITY OF THE USER TO RESEARCH AND UNDERSTAND SAFE METHODS OF USE AND HANDLING OF THESE PRODUCTS.

STUD WALL ATTACHMENT DETAILS

| | | | |
|----------------|-------------|--------------|-------------------------------|
| DATE DRAWN: | 2018-06-01 | SCALE: | NOT TO SCALE |
| REVISION NO: | N/A | SHEET SIZE: | 8.5" x 11" [216mm x 279mm] |
| REVISION DATE: | YYYY-MM-DD | APPROVED ON: | 2018-06-04 |
| DRAWN BY: | Z. PROSTRAN | APPROVED BY: | G. KUSTERMANN |
| | | | DRAWING NO: QLU-711 |

QUAD-LOCK R-28 [U-0.21] WALL

| TIE NAME | CONCRETE CORE THICKNESS |
|------------------------------|-------------------------|
| BLUE TIE = 4" [102mm] | |
| YELLOW TIE = 6" [152mm] | |
| GREEN TIE = 8" [203mm] | |
| RED TIE = 10" [254mm] | |
| BROWN TIE = 12" [305mm] | |
| BLACK TIE + XT = 14" [356mm] | |
| ETC. | |



QUAD-LOCK®
Building Systems

Quad-Lock Building Systems
7398 - 132nd Street
Surrey, BC V3W 4M7
Canada
888.711.5625 - Toll Free
604.590.3111
604.590.8412 - fax
www.quadlock.com

IT IS THE RESPONSIBILITY OF THE USER TO COMPLY WITH ALL APPLICABLE REGULATIONS AND BUILDING CODE REQUIREMENTS CONCERNING THE USE OF THESE PRODUCTS.

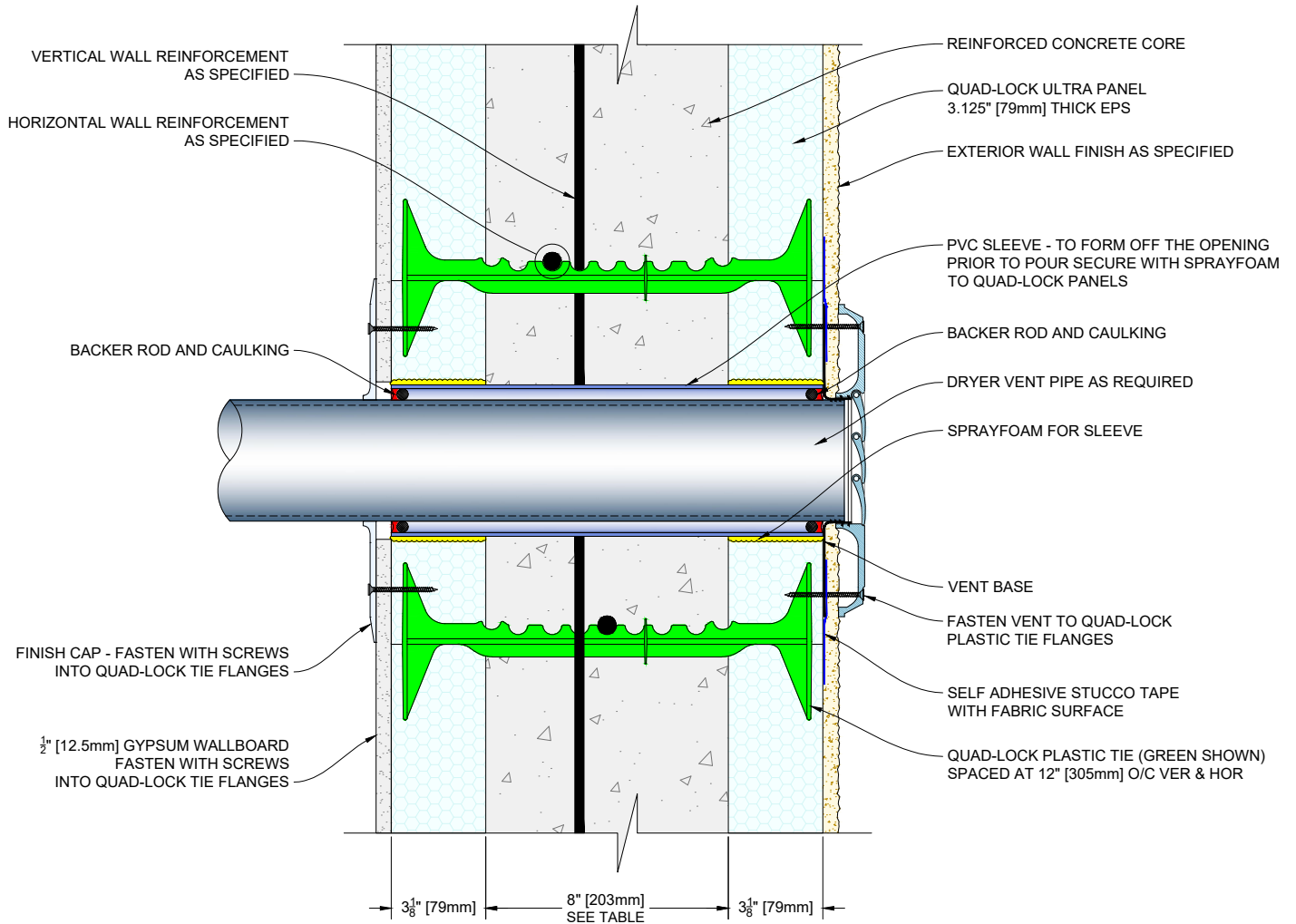
IT IS FURTHER THE RESPONSIBILITY OF THE USER TO RESEARCH AND UNDERSTAND SAFE METHODS OF USE AND HANDLING OF THESE PRODUCTS.

QUAD-LOCK WALL PLUMBING PENETRATION BELOW GRADE

| | | | |
|----------------|-------------|--------------|-------------------------------|
| DATE DRAWN: | 2018-06-01 | SCALE: | NOT TO SCALE |
| REVISION NO: | N/A | SHEET SIZE: | 8.5" x 11" [216mm x 279mm] |
| REVISION DATE: | YYYY-MM-DD | APPROVED ON: | 2018-06-04 |
| DRAWN BY: | Z. PROSTRAN | APPROVED BY: | G. KUSTERMANN |
| | | | DRAWING NO: QLU-712 |

QUAD-LOCK R-28 [U-0.21] WALL

| TIE NAME | CONCRETE CORE THICKNESS |
|------------------------------|-------------------------|
| BLUE TIE = 4" [102mm] | |
| YELLOW TIE = 6" [152mm] | |
| GREEN TIE = 8" [203mm] | |
| RED TIE = 10" [254mm] | |
| BROWN TIE = 12" [305mm] | |
| BLACK TIE + XT = 14" [356mm] | |
| ETC. | |



QUAD-LOCK®
Building Systems

Quad-Lock Building Systems
7398 - 132nd Street
Surrey, BC V3W 4M7
Canada
888.711.5625 - Toll Free
604.590.3111
604.590.8412 - fax
www.quadlock.com

IT IS THE RESPONSIBILITY OF THE USER TO COMPLY WITH ALL APPLICABLE REGULATIONS AND BUILDING CODE REQUIREMENTS CONCERNING THE USE OF THESE PRODUCTS.

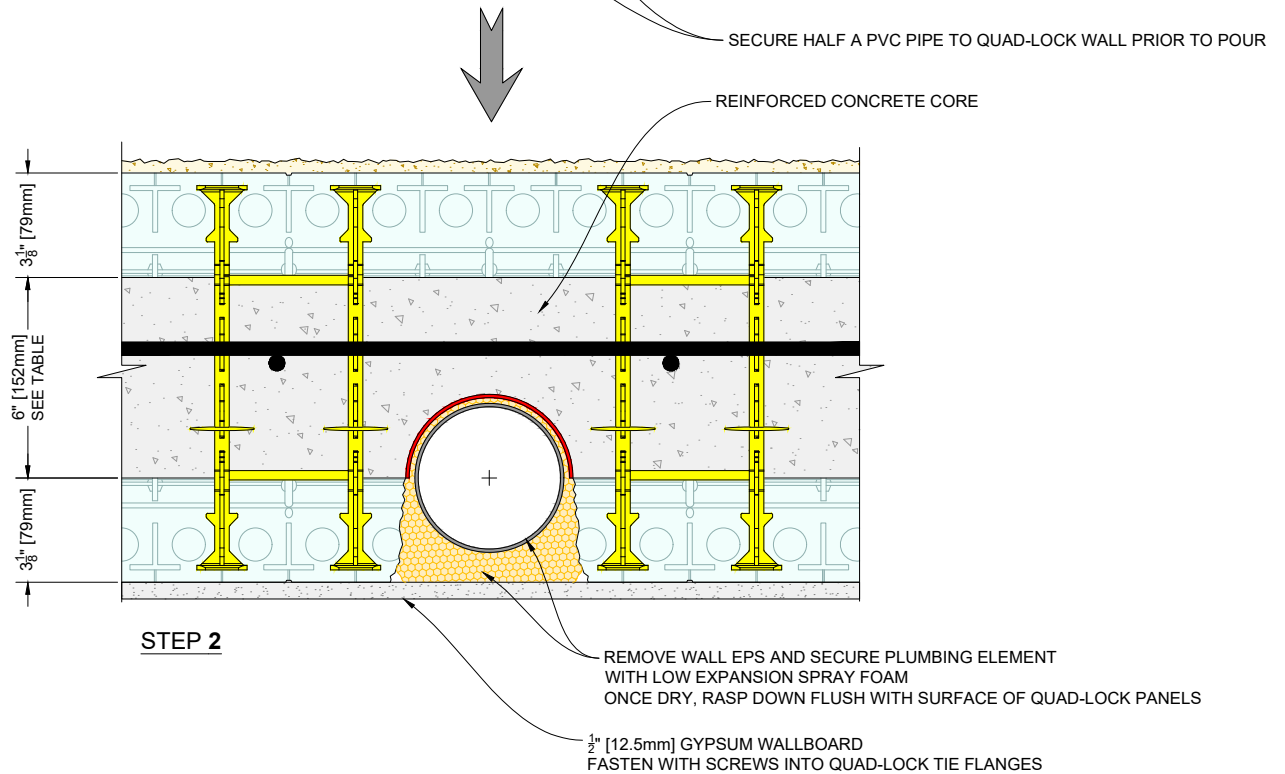
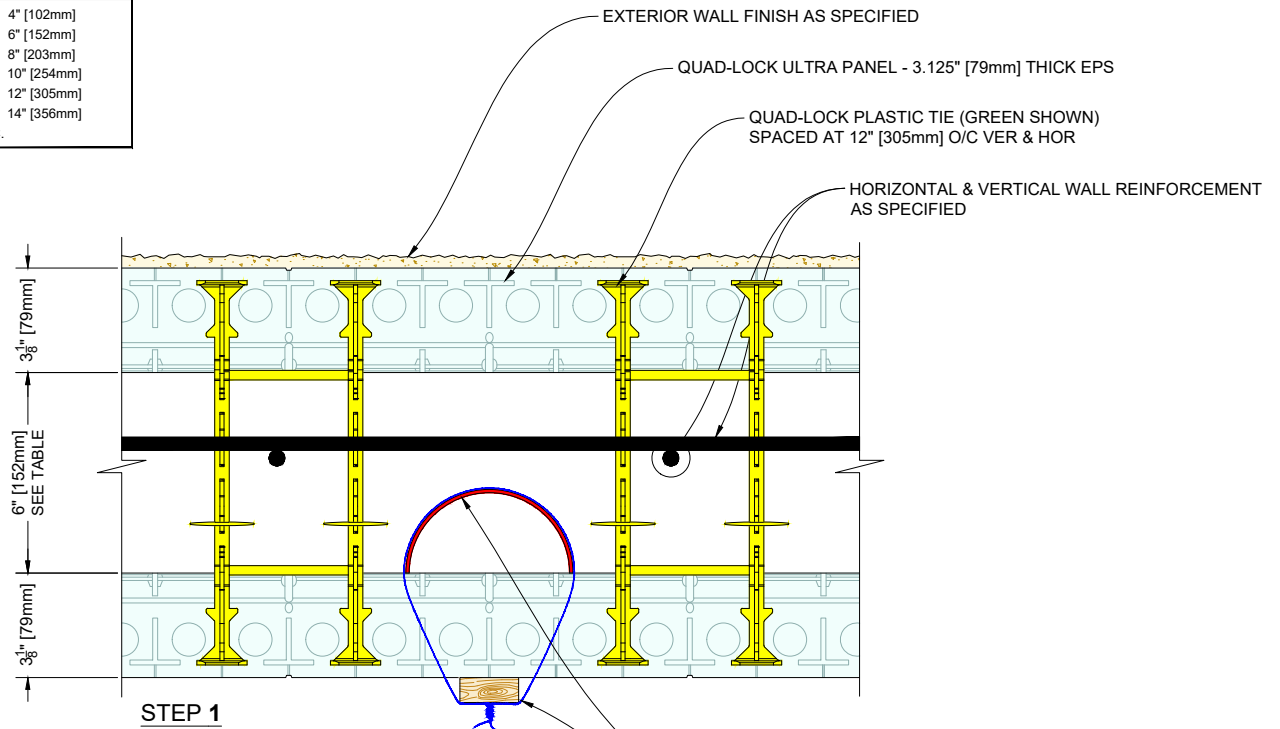
IT IS FURTHER THE RESPONSIBILITY OF THE USER TO RESEARCH AND UNDERSTAND SAFE METHODS OF USE AND HANDLING OF THESE PRODUCTS.

QUAD-LOCK WALL DRYER VENT PENETRATION

| | | | |
|----------------|-------------|--------------|-------------------------------|
| DATE DRAWN: | 2018-06-01 | SCALE: | NOT TO SCALE |
| REVISION NO: | N/A | SHEET SIZE: | 8.5" x 11" [216mm x 279mm] |
| REVISION DATE: | YYYY-MM-DD | APPROVED ON: | 2018-06-04 |
| DRAWN BY: | Z. PROSTRAN | APPROVED BY: | G. KUSTERMANN |
| | | | DRAWING NO: QLU-713 |

QUAD-LOCK R-28 [U-0.21] WALL

| TIE NAME | CONCRETE CORE THICKNESS |
|------------------------------|-------------------------|
| BLUE TIE = 4" [102mm] | |
| YELLOW TIE = 6" [152mm] | |
| GREEN TIE = 8" [203mm] | |
| RED TIE = 10" [254mm] | |
| BROWN TIE = 12" [305mm] | |
| BLACK TIE + XT = 14" [356mm] | |
| ETC. | |



QUAD-LOCK®
Building Systems

Quad-Lock Building Systems
7398 - 132nd Street
Surrey, BC V3W 4M7
Canada
888.711.5625 - Toll Free
604.590.3111
604.590.8412 - fax
www.quadlock.com

IT IS THE RESPONSIBILITY OF THE USER TO COMPLY WITH ALL APPLICABLE REGULATIONS AND BUILDING CODE REQUIREMENTS CONCERNING THE USE OF THESE PRODUCTS.

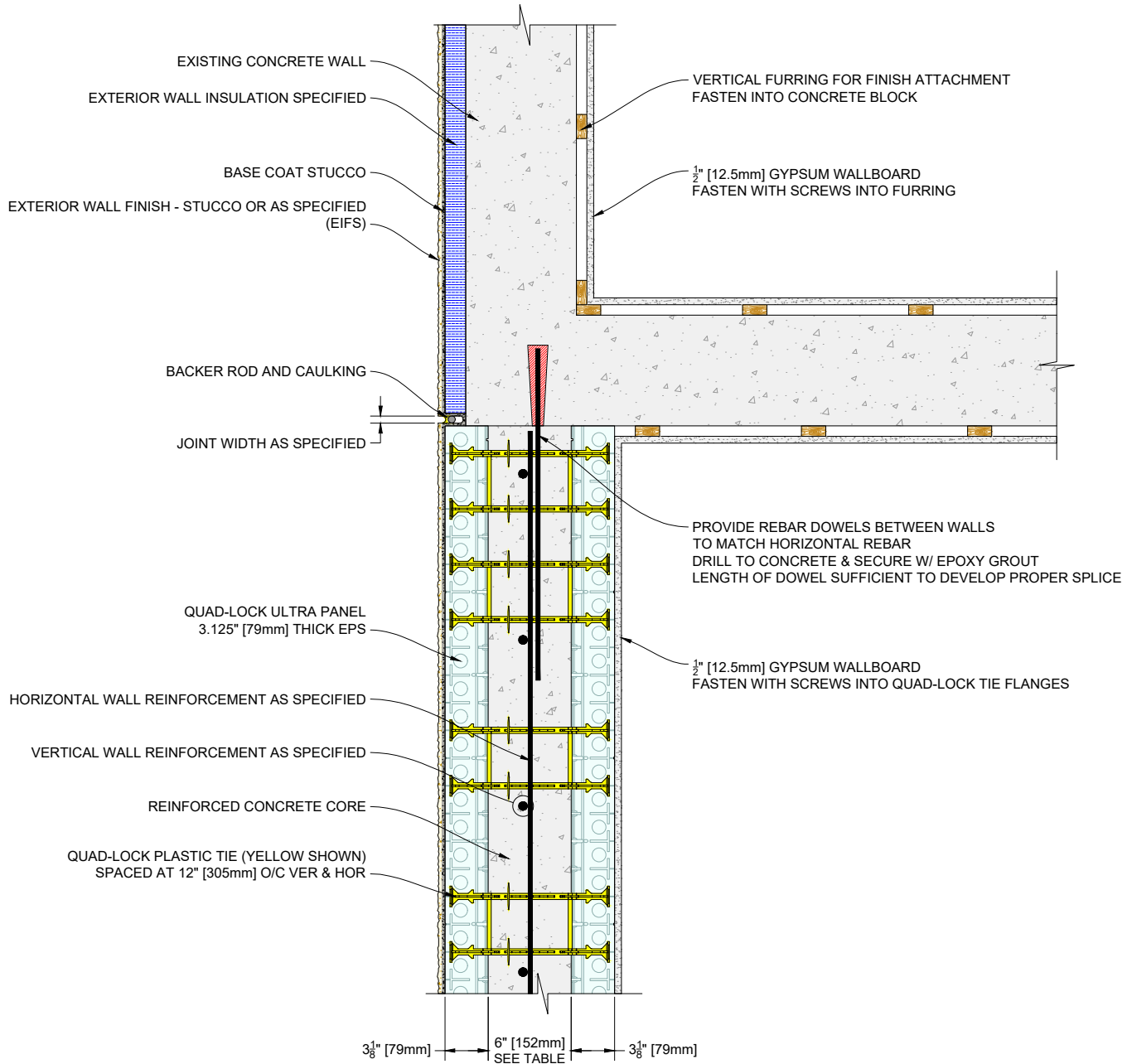
IT IS FURTHER THE RESPONSIBILITY OF THE USER TO RESEARCH AND UNDERSTAND SAFE METHODS OF USE AND HANDLING OF THESE PRODUCTS.

QUAD-LOCK LARGE PLUMBING DETAIL

| | | | |
|----------------|-------------|--------------|----------------------------|
| DATE DRAWN: | 2018-06-01 | SCALE: | NOT TO SCALE |
| REVISION NO: | N/A | SHEET SIZE: | 8.5" x 11" [216mm x 279mm] |
| REVISION DATE: | YYYY-MM-DD | APPROVED ON: | 2018-06-04 |
| DRAWN BY: | Z. PROSTRAN | APPROVED BY: | G. KUSTERMANN |
| | | | DRAWING NO: QLU-714 |

QUAD-LOCK R-28 [U-0.21] WALL

| TIE NAME | CONCRETE CORE THICKNESS |
|----------------|-------------------------|
| BLUE TIE | = 4" [102mm] |
| YELLOW TIE | = 6" [152mm] |
| GREEN TIE | = 8" [203mm] |
| RED TIE | = 10" [254mm] |
| BROWN TIE | = 12" [305mm] |
| BLACK TIE + XT | = 14" [356mm] |
| ETC. | |



QUAD-LOCK®
Building Systems

Quad-Lock Building Systems
7398 - 132nd Street
Surrey, BC V3W 4M7
Canada
888.711.5625 - Toll Free
604.590.3111
604.590.8412 - fax
www.quadlock.com

IT IS THE RESPONSIBILITY OF THE USER TO COMPLY WITH ALL APPLICABLE REGULATIONS AND BUILDING CODE REQUIREMENTS CONCERNING THE USE OF THESE PRODUCTS.

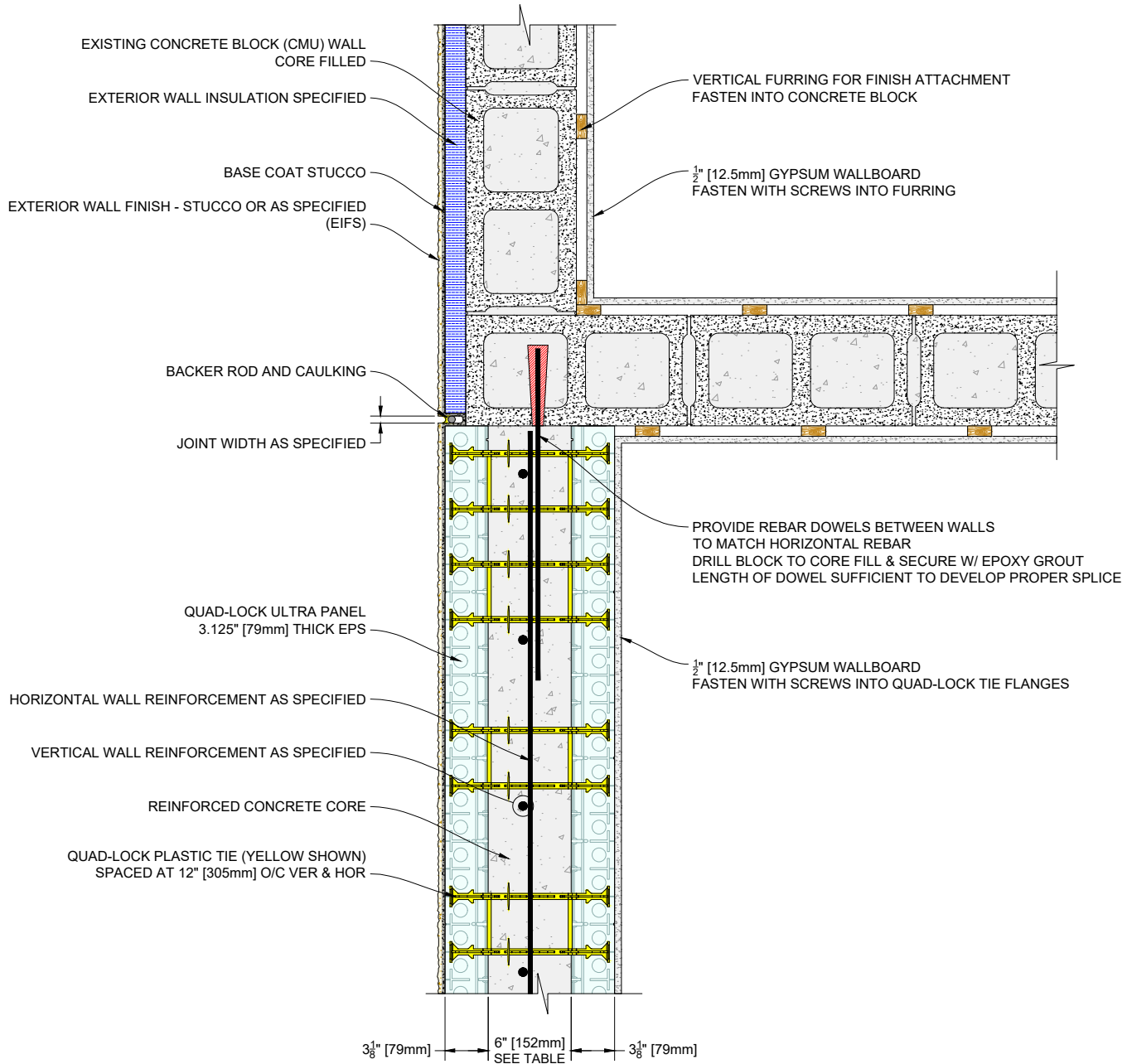
IT IS FURTHER THE RESPONSIBILITY OF THE USER TO RESEARCH AND UNDERSTAND SAFE METHODS OF USE AND HANDLING OF THESE PRODUCTS.

QUAD-LOCK WALL TO EXISTING CONCRETE WALL

| | | | |
|----------------|-------------|--------------|----------------------------|
| DATE DRAWN: | 2018-06-01 | SCALE: | NOT TO SCALE |
| REVISION NO.: | N/A | SHEET SIZE: | 8.5" x 11" [216mm x 279mm] |
| REVISION DATE: | YYYY-MM-DD | APPROVED ON: | 2018-06-04 |
| DRAWN BY: | Z. PROSTRAN | APPROVED BY: | G. KUSTERMANN |
| | | | DRAWING NO.: QLU-715 |

QUAD-LOCK R-28 [U-0.21] WALL

| TIE NAME | CONCRETE CORE THICKNESS |
|----------------|-------------------------|
| BLUE TIE | = 4" [102mm] |
| YELLOW TIE | = 6" [152mm] |
| GREEN TIE | = 8" [203mm] |
| RED TIE | = 10" [254mm] |
| BROWN TIE | = 12" [305mm] |
| BLACK TIE + XT | = 14" [356mm] |
| ETC. | |



QUAD-LOCK®
Building Systems

Quad-Lock Building Systems
7398 - 132nd Street
Surrey, BC V3W 4M7
Canada
888.711.5625 - Toll Free
604.590.3111
604.590.8412 - fax
www.quadlock.com

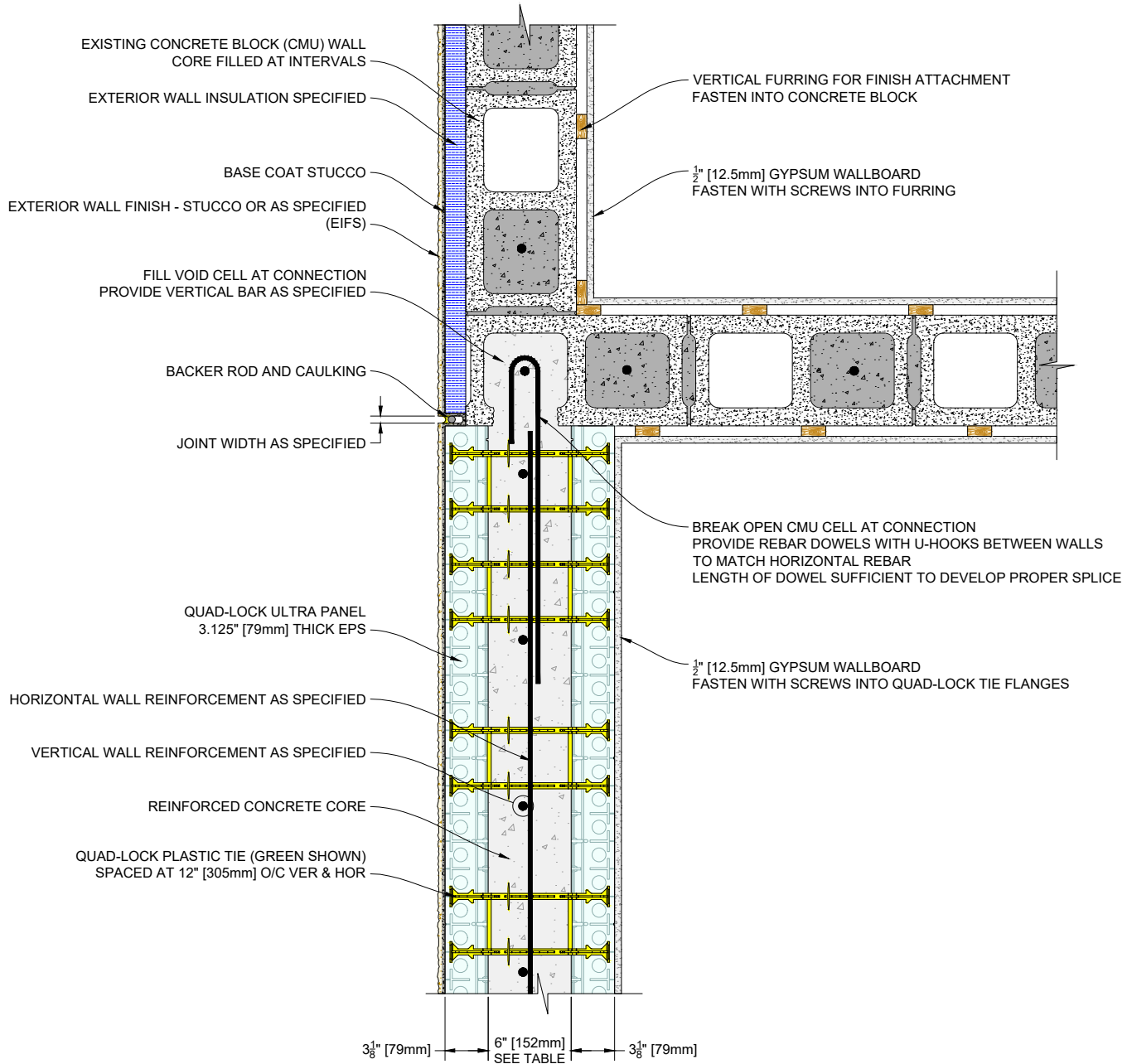
IT IS THE RESPONSIBILITY OF THE USER TO COMPLY WITH ALL APPLICABLE REGULATIONS AND BUILDING CODE REQUIREMENTS CONCERNING THE USE OF THESE PRODUCTS.
IT IS FURTHER THE RESPONSIBILITY OF THE USER TO RESEARCH AND UNDERSTAND SAFE METHODS OF USE AND HANDLING OF THESE PRODUCTS.

QUAD-LOCK WALL TO CONCRETE BLOCK WALL CMU CORES FILLED

| | | | |
|----------------|-------------|--------------|----------------------------|
| DATE DRAWN: | 2018-06-01 | SCALE: | NOT TO SCALE |
| REVISION NO.: | N/A | SHEET SIZE: | 8.5" x 11" [216mm x 279mm] |
| REVISION DATE: | YYYY-MM-DD | APPROVED ON: | 2018-06-04 |
| DRAWN BY: | Z. PROSTRAN | APPROVED BY: | G. KUSTERMANN |
| | | | DRAWING NO.: QLU-716 |

QUAD-LOCK R-28 [U-0.21] WALL

| TIE NAME | CONCRETE CORE THICKNESS |
|----------------|-------------------------|
| BLUE TIE | = 4" [102mm] |
| YELLOW TIE | = 6" [152mm] |
| GREEN TIE | = 8" [203mm] |
| RED TIE | = 10" [254mm] |
| BROWN TIE | = 12" [305mm] |
| BLACK TIE + XT | = 14" [356mm] |
| ETC. | |



QUAD-LOCK®
Building Systems

Quad-Lock Building Systems
7398 - 132nd Street
Surrey, BC V3W 4M7
Canada
888.711.5625 - Toll Free
604.590.3111
604.590.8412 - fax
www.quadlock.com

IT IS THE RESPONSIBILITY OF THE USER TO COMPLY WITH ALL APPLICABLE REGULATIONS AND BUILDING CODE REQUIREMENTS CONCERNING THE USE OF THESE PRODUCTS.

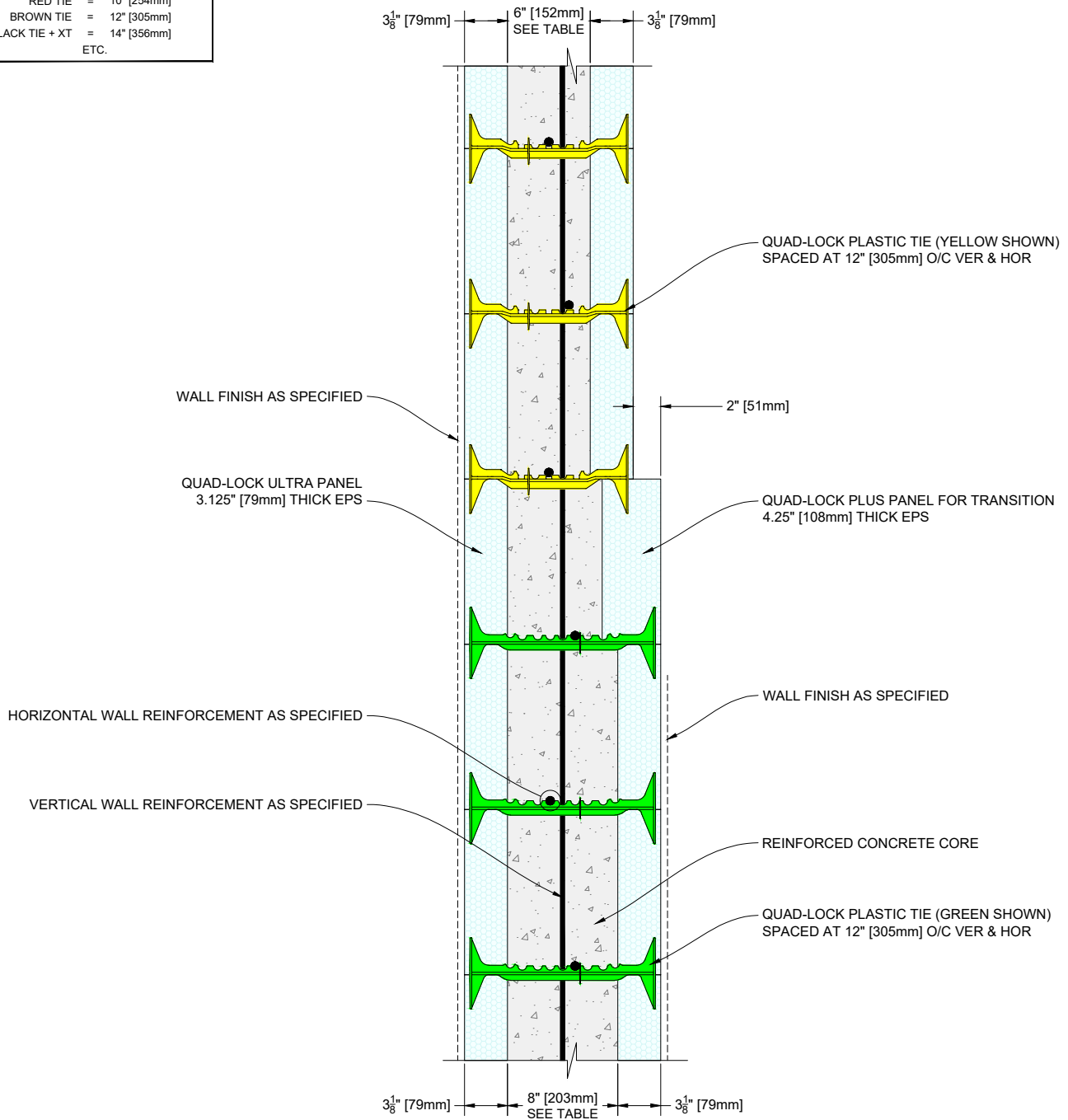
IT IS FURTHER THE RESPONSIBILITY OF THE USER TO RESEARCH AND UNDERSTAND SAFE METHODS OF USE AND HANDLING OF THESE PRODUCTS.

QUAD-LOCK WALL TO CONCRETE BLOCK WALL CMU CORES EMPTY

| | | | |
|----------------|-------------|--------------|----------------------------|
| DATE DRAWN: | 2018-06-01 | SCALE: | NOT TO SCALE |
| REVISION NO: | N/A | SHEET SIZE: | 8.5" x 11" [216mm x 279mm] |
| REVISION DATE: | YYYY-MM-DD | APPROVED ON: | 2018-06-04 |
| DRAWN BY: | Z. PROSTRAN | APPROVED BY: | G. KUSTERMANN |
| | | | QLU-717 |

QUAD-LOCK R-28 [U-0.21] WALL

| TIE NAME | CONCRETE CORE THICKNESS |
|------------------------------|-------------------------|
| BLUE TIE = 4" [102mm] | |
| YELLOW TIE = 6" [152mm] | |
| GREEN TIE = 8" [203mm] | |
| RED TIE = 10" [254mm] | |
| BROWN TIE = 12" [305mm] | |
| BLACK TIE + XT = 14" [356mm] | |
| ETC. | |



QUAD-LOCK®
Building Systems

Quad-Lock Building Systems
7398 - 132nd Street
Surrey, BC V3W 4M7
Canada
888.711.5625 - Toll Free
604.590.3111
604.590.8412 - fax
www.quadlock.com

IT IS THE RESPONSIBILITY OF THE USER TO COMPLY WITH ALL APPLICABLE REGULATIONS AND BUILDING CODE REQUIREMENTS CONCERNING THE USE OF THESE PRODUCTS.

IT IS FURTHER THE RESPONSIBILITY OF THE USER TO RESEARCH AND UNDERSTAND SAFE METHODS OF USE AND HANDLING OF THESE PRODUCTS.

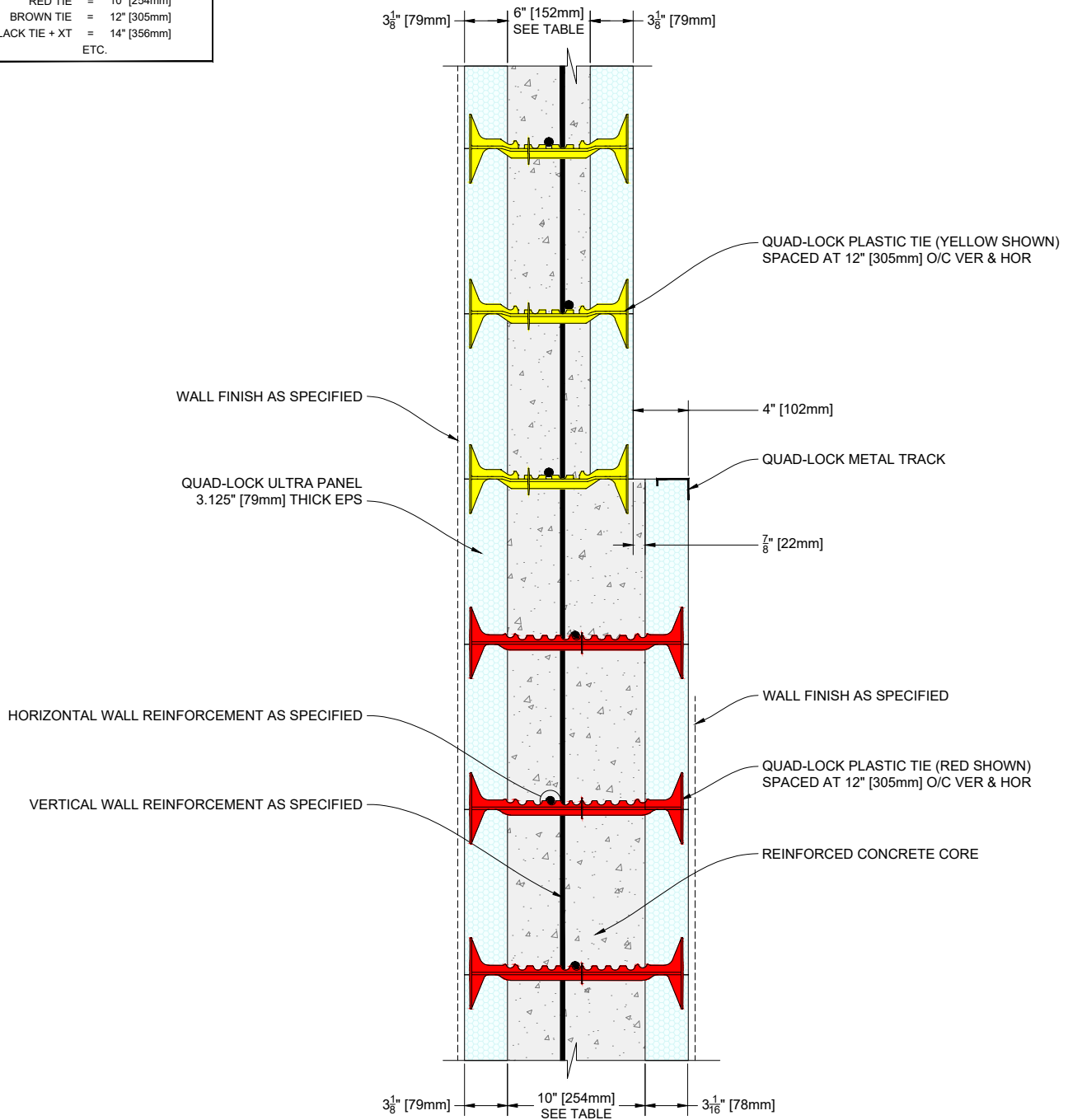
QUAD-LOCK WALL VERTICAL TRANSITION

2" [51mm] STEP

| | | | |
|----------------|-------------|--------------|----------------------------|
| DATE DRAWN: | 2018-06-01 | SCALE: | NOT TO SCALE |
| REVISION NO.: | N/A | SHEET SIZE: | 8.5" x 11" [216mm x 279mm] |
| REVISION DATE: | YYYY-MM-DD | APPROVED ON: | 2018-06-04 |
| DRAWN BY: | Z. PROSTRAN | APPROVED BY: | G. KUSTERMAN |
| | | | DRAWING NO. QLU-718 |

QUAD-LOCK R-28 [U-0.21] WALL

| TIE NAME | CONCRETE CORE THICKNESS |
|------------------------------|-------------------------|
| BLUE TIE = 4" [102mm] | |
| YELLOW TIE = 6" [152mm] | |
| GREEN TIE = 8" [203mm] | |
| RED TIE = 10" [254mm] | |
| BROWN TIE = 12" [305mm] | |
| BLACK TIE + XT = 14" [356mm] | |
| ETC. | |



QUAD-LOCK®
Building Systems

Quad-Lock Building Systems
7398 - 132nd Street
Surrey, BC V3W 4M7
Canada
888.711.5625 - Toll Free
604.590.3111
604.590.8412 - fax
www.quadlock.com

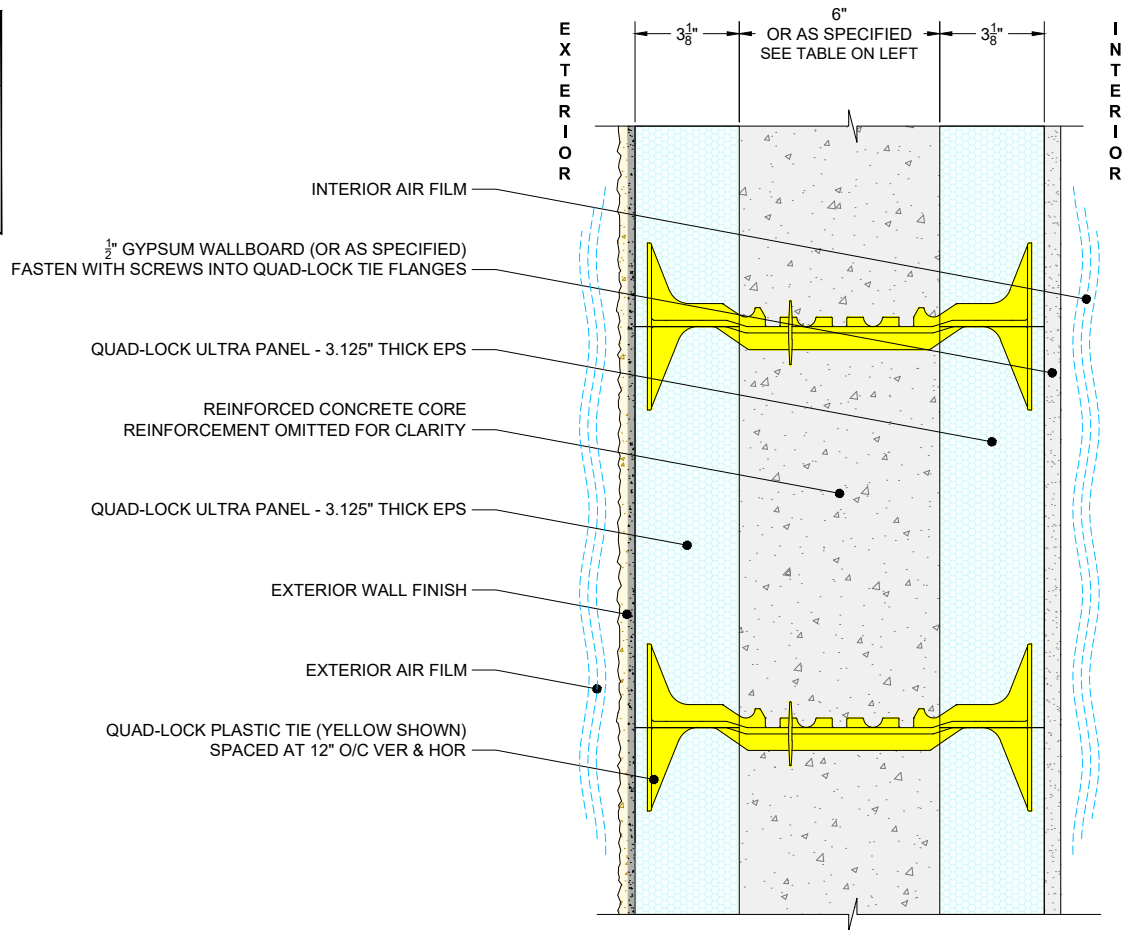
IT IS THE RESPONSIBILITY OF THE USER TO COMPLY WITH ALL APPLICABLE REGULATIONS AND BUILDING CODE REQUIREMENTS CONCERNING THE USE OF THESE PRODUCTS.

IT IS FURTHER THE RESPONSIBILITY OF THE USER TO RESEARCH AND UNDERSTAND SAFE METHODS OF USE AND HANDLING OF THESE PRODUCTS.

QUAD-LOCK WALL VERTICAL TRANSITION**4" [102mm] STEP**

| | | | |
|----------------|-------------|--------------|----------------------------|
| DATE DRAWN: | 2018-06-01 | SCALE: | NOT TO SCALE |
| REVISION NO.: | N/A | SHEET SIZE: | 8.5" x 11" [216mm x 279mm] |
| REVISION DATE: | YYYY-MM-DD | APPROVED ON: | 2018-06-04 |
| DRAWN BY: | Z. PROSTRAN | APPROVED BY: | G. KUSTERMAN |
| | | | QLU-719 |

| QUAD-LOCK R-28 WALL | | |
|---------------------|---|-------------------------|
| TIE NAME | | CONCRETE CORE THICKNESS |
| BLUE TIE | = | 4" |
| YELLOW TIE | = | 6" |
| GREEN TIE | = | 8" |
| RED TIE | = | 10" |
| BROWN TIE | = | 12" |
| BLACK TIE + XT | = | 14" |
| ETC. | | |



TYPICAL QUAD-LOCK R-28 WALL
FRONT (SECTION) VIEW

| ITEM | NOMINAL DENSITY (pcf) | MATERIAL THICKNESS (in) | R-VALUE PER INCH (h*ft ² *°F/BTU)/in) | R-VALUE PER LAYER (h*ft ² *°F/BTU) |
|--|-----------------------|-------------------------|---|---|
| EXTERIOR AIR FILM | | | | 0.25 |
| STUCCO FINISH | | | | 0.78 |
| QUAD-LOCK ULTRA PANEL EPS Type II in USA | 1.5 | 3.125 | 4.1 (Interpolated as per ASTM C-578) | 12.81 |
| CONCRETE CORE | 150 | 6 | 0.08 | 0.48 |
| QUAD-LOCK ULTRA PANEL EPS Type II in USA | 1.5 | 3.125 | 4.1 (Interpolated as per ASTM C-578) | 12.81 |
| GYPSUM WALLBOARD | 44 | 0.5 | | 0.45 |
| INTERIOR AIR FILM | | | | 0.68 |
| TOTAL R-VALUE (h*ft²*°F/BTU) | | | | 28.2 |

NOTES:

ASTM C-578 R-values taken at 75°F for 1.5pcf EPS

ASTM C578 summary available at <http://www.epsindustry.org/sites/default/files/C578%20Chart.pdf>

QUAD-LOCK®
Building Systems

Quad-Lock Building Systems
7398 - 132nd Street
Surrey, BC V3W 4M7
Canada
888.711.5625 - Toll Free
604.590.3111
604.590.8412 - fax
www.quadlock.com

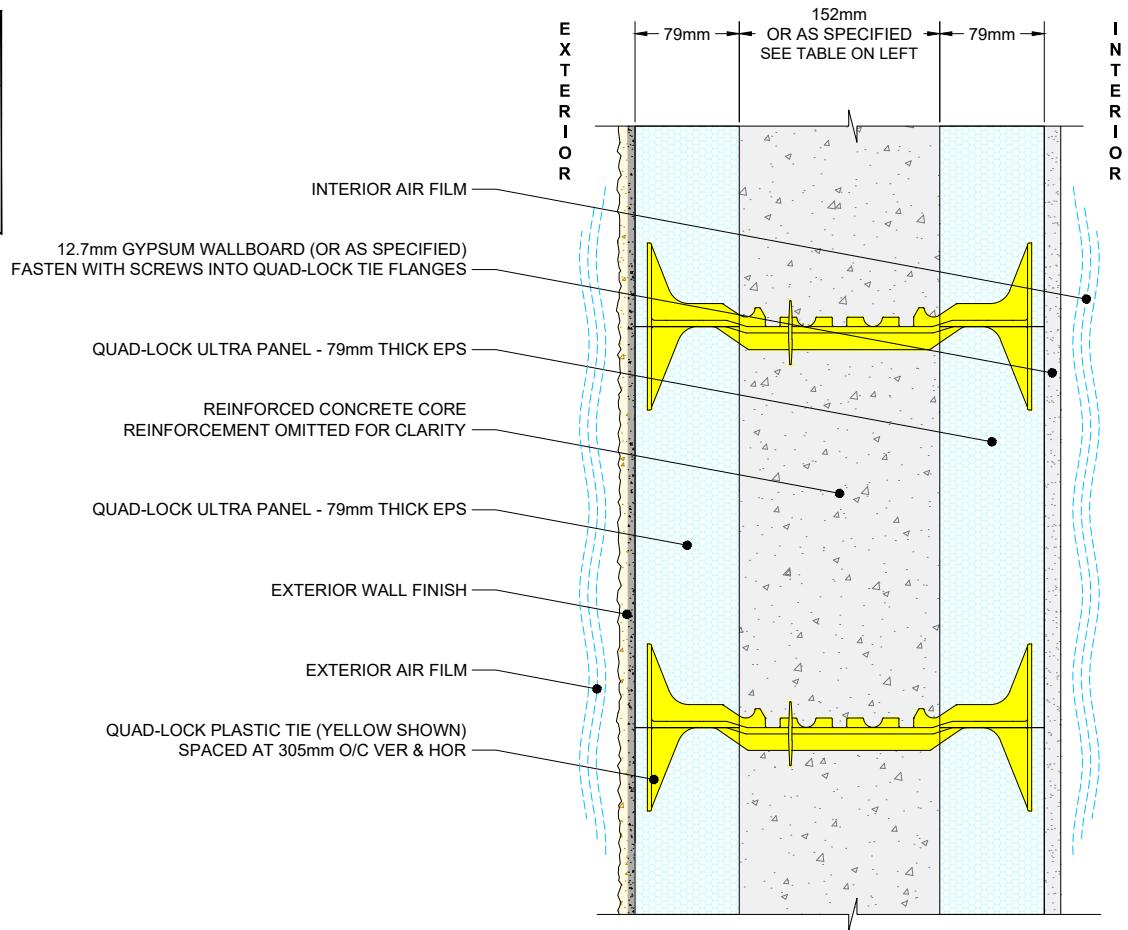
IT IS THE RESPONSIBILITY OF THE USER TO COMPLY WITH ALL APPLICABLE REGULATIONS AND BUILDING CODE REQUIREMENTS CONCERNING THE USE OF THESE PRODUCTS.

IT IS FURTHER THE RESPONSIBILITY OF THE USER TO RESEARCH AND UNDERSTAND SAFE METHODS OF USE AND HANDLING OF THESE PRODUCTS.

QUAD-LOCK R-28 WALL

| | | | |
|----------------|-------------|--------------|----------------------------|
| DATE DRAWN: | 2018-06-01 | SCALE: | NOT TO SCALE |
| REVISION NO.: | N/A | SHEET SIZE: | 8.5" x 11" [216mm x 279mm] |
| REVISION DATE: | YYYY-MM-DD | APPROVED ON: | 2018-06-04 |
| DRAWN BY: | Z. PROSTRAN | APPROVED BY: | G. KUSTERMANN |
| | | | DRAWING NO. QLU-720 |

| QUAD-LOCK U-0.21 WALL | | |
|-----------------------|-------------------------|-------|
| TIE NAME | CONCRETE CORE THICKNESS | |
| BLUE TIE | = | 102mm |
| YELLOW TIE | = | 152mm |
| GREEN TIE | = | 203mm |
| RED TIE | = | 254mm |
| BROWN TIE | = | 305mm |
| BLACK TIE + XT | = | 356mm |
| ETC. | | |



TYPICAL QUAD-LOCK U-0.21 WALL
FRONT (SECTION) VIEW

| Item | Nominal Density (kg/m ³) | Material Thickness (mm) | Design Thermal Conductivity, λ (W/(m·K)) | Design Thermal Resistance, R (W/(m ² ·K)) | Notes |
|--|--------------------------------------|-------------------------|--|--|--------------------------------------|
| EXTERIOR AIR FILM | | | | 0.04 | Source: ISO 10456 |
| EXTERIOR FINISH Gypsum & Sand or Lime & Sand | | 10 | 0.8 | 0.0125 | Source: ISO 10456 |
| QUAD-LOCK ULTRA PANEL EPS Type II in USA and Type 2 in CAN | 24 | 79.375 | 0.0335 | 2.35821 | Source: BASF EPS Data Specifications |
| CONCRETE CORE With 2% Rebar | 2400 | 152.4 | 2.5 | 0.06096 | Source: ISO 10456 |
| QUAD-LOCK ULTRA PANEL EPS Type II in USA and Type 2 in CAN | 24 | 79.375 | 0.0335 | 2.35821 | Source: BASF EPS Data Specifications |
| DRYWALL | | 12.5 | 0.21 | 0.05952 | Source: ISO 10456 |
| INTERIOR AIR FILM | | | | 0.13 | Source: ISO 10456 |
| TOTAL DESIGN THERMAL RESISTANCE, R_T | | | | 0.68 | |
| TOTAL THERMAL TRANSMITTANCE, U-VALUE (W/(m ² ·K)) With applied reduction factor of 0.961 | | | | 0.207 | $U = 1/R_T$ |

QUAD-LOCK®
Building Systems

Quad-Lock Building Systems
7398 - 132nd Street
Surrey, BC V3W 4M7
Canada
888.711.5625 - Toll Free
604.590.3111
604.590.8412 - fax
www.quadlock.com

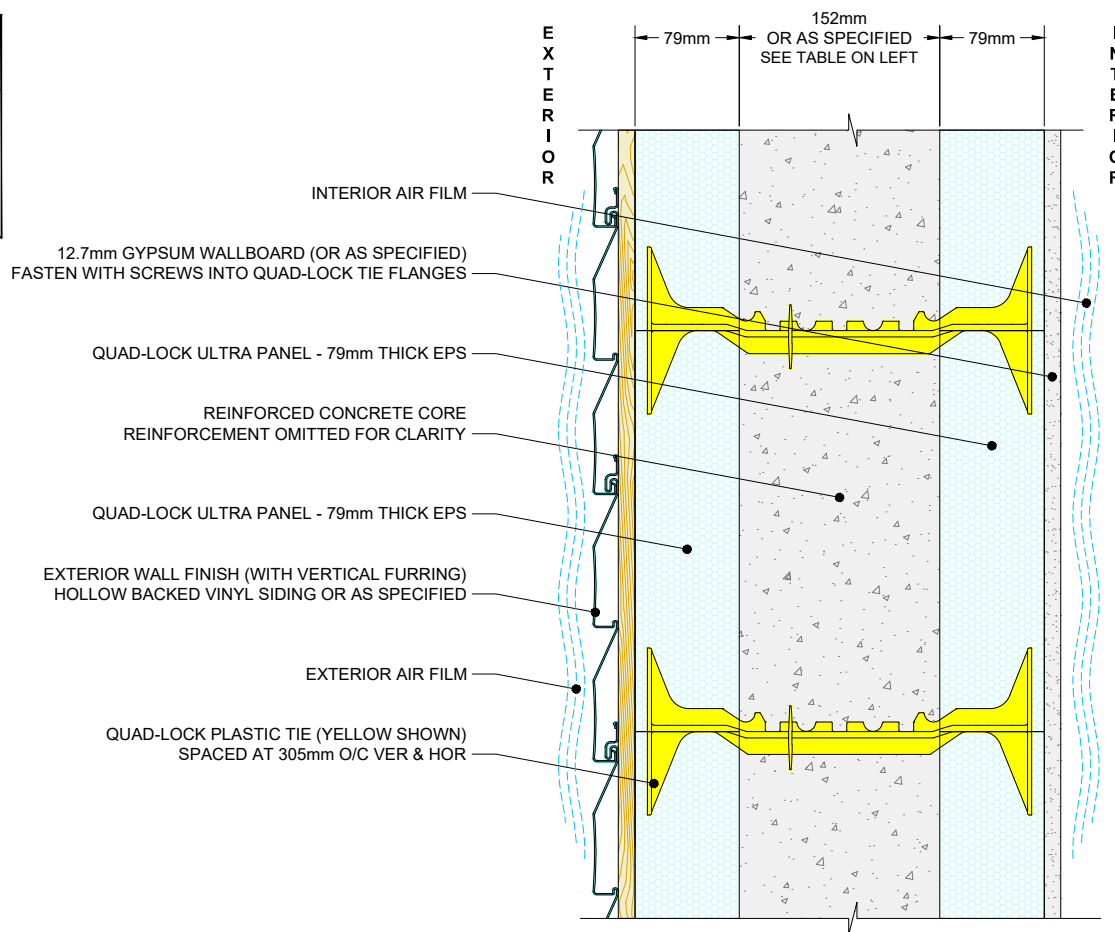
IT IS THE RESPONSIBILITY OF THE USER TO COMPLY WITH ALL APPLICABLE REGULATIONS AND BUILDING CODE REQUIREMENTS CONCERNING THE USE OF THESE PRODUCTS.

IT IS FURTHER THE RESPONSIBILITY OF THE USER TO RESEARCH AND UNDERSTAND SAFE METHODS OF USE AND HANDLING OF THESE PRODUCTS.

QUAD-LOCK U-0.21 WALL

| | | | |
|----------------|-------------|--------------|-----------------------------|
| DATE DRAWN: | 2018-06-01 | SCALE: | NOT TO SCALE |
| REVISION NO.: | N/A | SHEET SIZE: | 8.5" x 11" [216mm x 279mm] |
| REVISION DATE: | YYYY-MM-DD | APPROVED ON: | 2018-06-04 |
| DRAWN BY: | Z. PROSTRAN | APPROVED BY: | G. KUSTERMANN |
| | | | DRAWING NO.: QLU-721 |

| QUAD-LOCK RSI-4.87 WALL | | |
|-------------------------|-------------------------|-------|
| TIE NAME | CONCRETE CORE THICKNESS | |
| BLUE TIE | = | 102mm |
| YELLOW TIE | = | 152mm |
| GREEN TIE | = | 203mm |
| RED TIE | = | 254mm |
| BROWN TIE | = | 305mm |
| BLACK TIE + XT | = | 356mm |
| ETC. | | |



TYPICAL QUAD-LOCK RSI-4.84 WALL
FRONT (SECTION) VIEW

| Item | Nominal Density (kg/m ³) | Material Thickness (mm) | RSI/mm ((K·m ² /W)/mm) | Effective RSI/Layer (K·m ² /W) |
|--|--------------------------------------|-------------------------|-----------------------------------|---|
| EXTERIOR AIR FILM | | | | 0.03 |
| EXTERIOR FINISH Hollow Backed Vinyl Siding | | | | 0.11 |
| QUAD-LOCK ULTRA PANEL EPS Type 2 in CAN | 24 | 79.375 | 0.028 | 2.2225 |
| CONCRETE CORE | 2400 | 152.4 | 0.0004 | 0.06096 |
| QUAD-LOCK ULTRA PANEL EPS Type 2 in CAN | 24 | 79.375 | 0.028 | 2.2225 |
| GYPSUM WALLBOARD | | 12.7 | 0.0063 | 0.08001 |
| INTERIOR AIR FILM | | | | 0.12 |
| EFFECTIVE RSI-VALUE (K·m²/W) | | | | 4.846 |

NOTES:

RSI material values taken from: <http://www.nrcan.gc.ca/energy/efficiency/housing/new-homes/energy-star/14176>

QUAD-LOCK®
Building Systems

Quad-Lock Building Systems
7398 - 132nd Street
Surrey, BC V3W 4M7
Canada
888.711.5625 - Toll Free
604.590.3111
604.590.8412 - fax
www.quadlock.com

IT IS THE RESPONSIBILITY OF THE USER TO COMPLY WITH ALL APPLICABLE REGULATIONS AND BUILDING CODE REQUIREMENTS CONCERNING THE USE OF THESE PRODUCTS.

IT IS FURTHER THE RESPONSIBILITY OF THE USER TO RESEARCH AND UNDERSTAND SAFE METHODS OF USE AND HANDLING OF THESE PRODUCTS.

QUAD-LOCK RSI-4.84 WALL

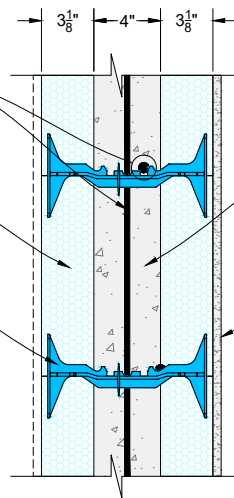
| | | | |
|----------------|-------------|--------------|-----------------------------|
| DATE DRAWN: | 2018-06-01 | SCALE: | NOT TO SCALE |
| REVISION NO.: | N/A | SHEET SIZE: | 8.5" x 11" [216mm x 279mm] |
| REVISION DATE: | YYYY-MM-DD | APPROVED ON: | 2018-06-04 |
| DRAWN BY: | Z. PROSTRAN | APPROVED BY: | G. KUSTERMAN |
| | | | DRAWING NO.: QLU-722 |

Wall Reinforcement (min. as tested)
#4 horizontal rebar spaced @ 12" o/c
#4 vertical rebar spaced @ 16" o/c centered in wall

Quad-Lock Ultra Panel
3.125" Thick EPS

Quad-Lock Blue Plastic Tie
Spaced at 12" O/C Ver & Hor

2hr 2 HOUR UL FIRE RATED WALL
UL Design No. U934



Normal Weight Concrete (min. as tested)
145 ±5 pcf density
2900 psi nominal compressive strength.

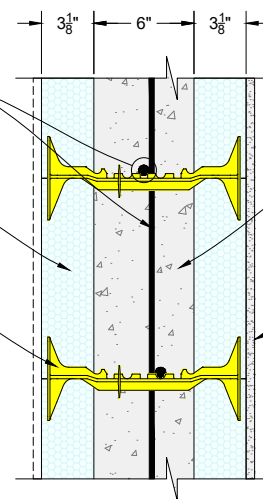
Min 1/2" thick, 1.5 psf min area density, 48 in. wide gypsum wallboard fastened to flanges of Quad-Lock Ties with 2" long drywall screws at 12" o/c ver & hor. Joints covered with joint compound, covered with joint tape, and covered with an additional coat of joint compound. Screwheads covered with joint compound. When the wall is used as an exterior wall, the Fire Resistance Rating is applicable from the inside only. The gypsum wallboard on the exterior face of the exterior wall may be omitted provided the EPS insulation is protected in accordance with building code requirements.

Wall Reinforcement (min. as tested)
#4 horizontal rebar spaced @ 12" o/c
#4 vertical rebar spaced @ 16" o/c centered in wall

Quad-Lock Ultra Panel
3.125" Thick EPS

Quad-Lock Yellow Plastic Tie
Spaced at 12" O/C Ver & Hor

3hr 3 HOUR UL FIRE RATED WALL
UL Design No. U934



Normal Weight Concrete (min. as tested)
145 ±5 pcf density
2900 psi nominal compressive strength.

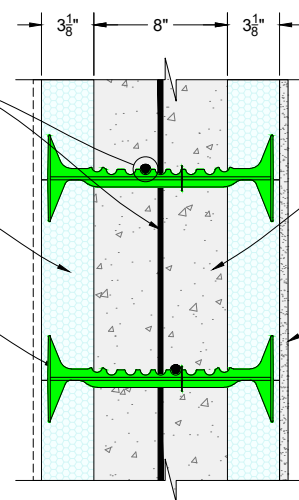
Min 1/2" thick, 1.5 psf min area density, 48 in. wide gypsum wallboard fastened to flanges of Quad-Lock Ties with 2" long drywall screws at 12" o/c ver & hor. Joints covered with joint compound, covered with joint tape, and covered with an additional coat of joint compound. Screwheads covered with joint compound. When the wall is used as an exterior wall, the Fire Resistance Rating is applicable from the inside only. The gypsum wallboard on the exterior face of the exterior wall may be omitted provided the EPS insulation is protected in accordance with building code requirements.

Wall Reinforcement (min. as tested)
#4 horizontal rebar spaced @ 12" o/c
#4 vertical rebar spaced @ 16" o/c centered in wall

Quad-Lock Ultra Panel
3.125" Thick EPS

Quad-Lock Red Plastic Tie
Spaced at 12" O/C Ver & Hor

4hr 4 HOUR UL FIRE RATED WALL
UL Design No. U934



Normal Weight Concrete (min. as tested)
145 ±5 pcf density
2900 psi nominal compressive strength.

Min 1/2" thick, 1.5 psf min area density, 48 in. wide gypsum wallboard fastened to flanges of Quad-Lock Ties with 2" long drywall screws at 12" o/c ver & hor. Joints covered with joint compound, covered with joint tape, and covered with an additional coat of joint compound. Screwheads covered with joint compound. When the wall is used as an exterior wall, the Fire Resistance Rating is applicable from the inside only. The gypsum wallboard on the exterior face of the exterior wall may be omitted provided the EPS insulation is protected in accordance with building code requirements.

QUAD-LOCK®
Building Systems

Quad-Lock Building Systems
7398 - 132nd Street
Surrey, BC V3W 4M7
Canada
888.711.5625 - Toll Free
604.590.3111
604.590.8412 - fax
www.quadlock.com

IT IS THE RESPONSIBILITY OF THE USER TO COMPLY WITH ALL APPLICABLE REGULATIONS AND BUILDING CODE REQUIREMENTS CONCERNING THE USE OF THESE PRODUCTS.
IT IS FURTHER THE RESPONSIBILITY OF THE USER TO RESEARCH AND UNDERSTAND SAFE METHODS OF USE AND HANDLING OF THESE PRODUCTS.

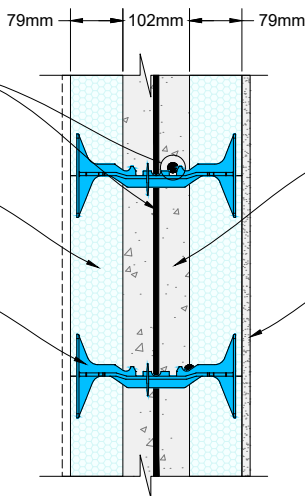
USA QUAD-LOCK WALL UL FIRE RESISTANCE RATINGS (FRR)

| | | | |
|----------------|-------------|--------------|-------------------------------|
| DATE DRAWN: | 2018-06-01 | SCALE: | NOT TO SCALE |
| REVISION NO: | N/A | SHEET SIZE: | 8.5" x 11" [216mm x 279mm] |
| REVISION DATE: | YYYY-MM-DD | APPROVED ON: | 2018-06-04 |
| DRAWN BY: | Z. PROSTRAN | APPROVED BY: | G. KUSTERMANN |
| | | | DRAWING NO: QLU-723 |

Wall Reinforcement (min. as tested)
10M horizontal rebar spaced @ 305mm o/c
10M vertical rebar spaced @ 400mm o/c centered in wall

Quad-Lock Ultra Panel
79mm Thick EPS

Quad-Lock Blue Plastic Tie
Spaced at 305mm O/C Ver & Hor



Sand-Limestone Concrete (min. as tested)
2300±50 Kg/m³ density
20 MPa nominal compressive strength.

12.7mm thick, 7.5 Kg/m² min. area density, 1220mm wide gypsum wallboard fastened to flanges of Quad-Lock Ties with 50mm long drywall screws at 305mm o/c ver & hor. Joints covered with joint compound, covered with joint tape, and covered with an additional coat of joint compound. Screwheads covered with joint compound. When the wall is used as an exterior wall, the Fire Resistance Rating is applicable from the inside only. The gypsum wallboard on the exterior face of the exterior wall may be omitted provided the EPS insulation is protected in accordance with building code requirements.

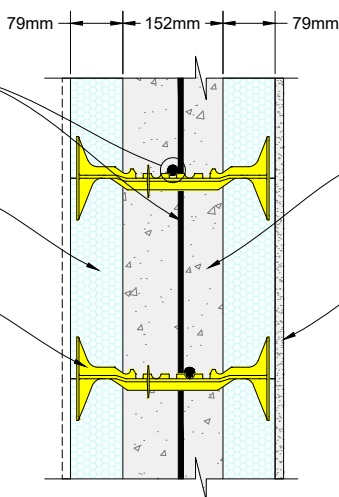
2hr 2 HOUR ULC FIRE RATED WALL

ULC Design No. W019

Wall Reinforcement (min. as tested)
10M horizontal rebar spaced @ 305mm o/c
10M vertical rebar spaced @ 400mm o/c centered in wall

Quad-Lock Ultra Panel
79mm Thick EPS

Quad-Lock Blue Plastic Tie
Spaced at 305mm O/C Ver & Hor



Sand-Limestone Concrete (min. as tested)
2300±50 Kg/m³ density
20 MPa nominal compressive strength.

12.7mm thick, 7.5 Kg/m² min. area density, 1220mm wide gypsum wallboard fastened to flanges of Quad-Lock Ties with 50mm long drywall screws at 305mm o/c ver & hor. Joints covered with joint compound, covered with joint tape, and covered with an additional coat of joint compound. Screwheads covered with joint compound. When the wall is used as an exterior wall, the Fire Resistance Rating is applicable from the inside only. The gypsum wallboard on the exterior face of the exterior wall may be omitted provided the EPS insulation is protected in accordance with building code requirements.

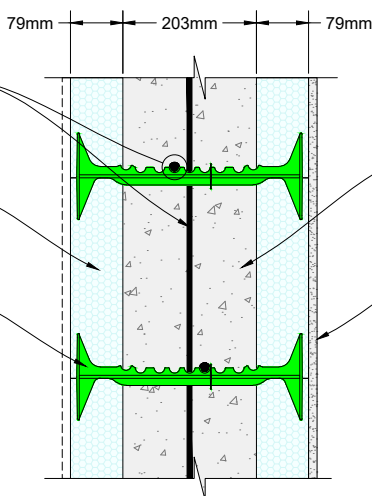
3hr 3 HOUR ULC FIRE RATED WALL

ULC Design No. W019

Wall Reinforcement (min. as tested)
10M horizontal rebar spaced @ 305mm o/c
10M vertical rebar spaced @ 400mm o/c centered in wall

Quad-Lock Ultra Panel
79mm Thick EPS

Quad-Lock Blue Plastic Tie
Spaced at 305mm O/C Ver & Hor



Sand-Limestone Concrete (min. as tested)
2300±50 Kg/m³ density
20 MPa nominal compressive strength.

12.7mm thick, 7.5 Kg/m² min. area density, 1220mm wide gypsum wallboard fastened to flanges of Quad-Lock Ties with 50mm long drywall screws at 305mm o/c ver & hor. Joints covered with joint compound, covered with joint tape, and covered with an additional coat of joint compound. Screwheads covered with joint compound. When the wall is used as an exterior wall, the Fire Resistance Rating is applicable from the inside only. The gypsum wallboard on the exterior face of the exterior wall may be omitted provided the EPS insulation is protected in accordance with building code requirements.

4hr 4 HOUR ULC FIRE RATED WALL

ULC Design No. W019

QUAD-LOCK®
Building Systems

Quad-Lock Building Systems
7398 - 132nd Street
Surrey, BC V3W 4M7
Canada
888.711.5625 - Toll Free
604.590.3111
604.590.8412 - fax
www.quadlock.com

IT IS THE RESPONSIBILITY OF THE USER TO COMPLY WITH ALL APPLICABLE REGULATIONS AND BUILDING CODE REQUIREMENTS CONCERNING THE USE OF THESE PRODUCTS.

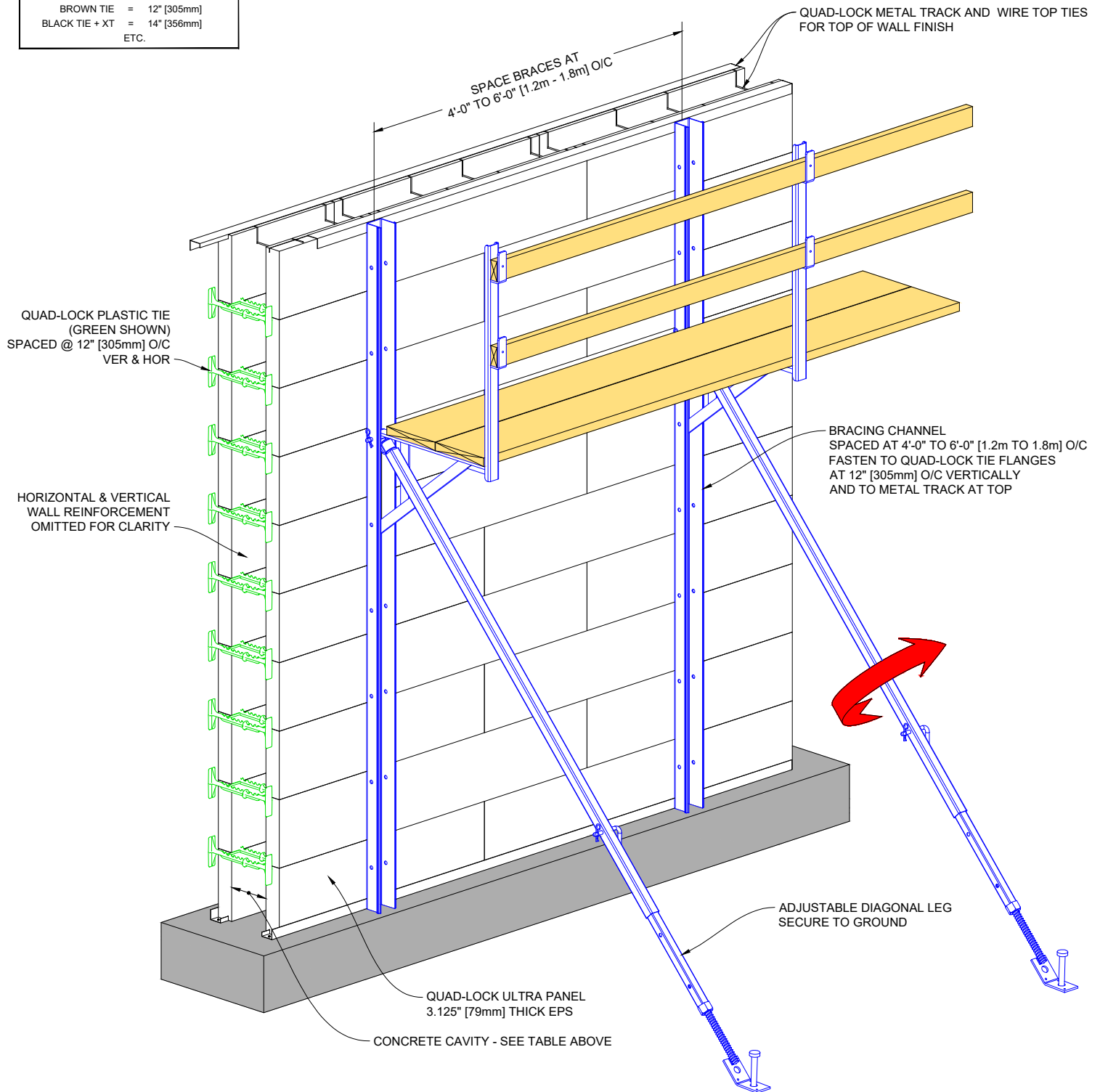
IT IS FURTHER THE RESPONSIBILITY OF THE USER TO RESEARCH AND UNDERSTAND SAFE METHODS OF USE AND HANDLING OF THESE PRODUCTS.

CDN QUAD-LOCK WALL ULC FIRE RESISTANCE RATINGS (FRR)

| | | | |
|----------------|-------------|--------------|----------------------------|
| DATE DRAWN: | 2018-06-01 | SCALE: | NOT TO SCALE |
| REVISION NO: | N/A | SHEET SIZE: | 8.5" x 11" [216mm x 279mm] |
| REVISION DATE: | YYYY-MM-DD | APPROVED ON: | 2018-06-04 |
| DRAWN BY: | Z. PROSTRAN | APPROVED BY: | G. KUSTERMAN |
| | | | QLU-724 |

QUAD-LOCK R-28 [U-0.21] WALL

| TIE NAME | CONCRETE CORE THICKNESS |
|------------------------------|-------------------------|
| BLUE TIE = 4" [102mm] | |
| YELLOW TIE = 6" [152mm] | |
| GREEN TIE = 8" [203mm] | |
| RED TIE = 10" [254mm] | |
| BROWN TIE = 12" [305mm] | |
| BLACK TIE + XT = 14" [356mm] | |
| ETC. | |



QUAD-LOCK®
Building Systems

Quad-Lock Building Systems
7398 - 132nd Street
Surrey, BC V3W 4M7
Canada
888.711.5625 - Toll Free
604.590.3111
604.590.8412 - fax
www.quadlock.com

IT IS THE RESPONSIBILITY OF THE USER TO COMPLY WITH ALL APPLICABLE REGULATIONS AND BUILDING CODE REQUIREMENTS CONCERNING THE USE OF THESE PRODUCTS.

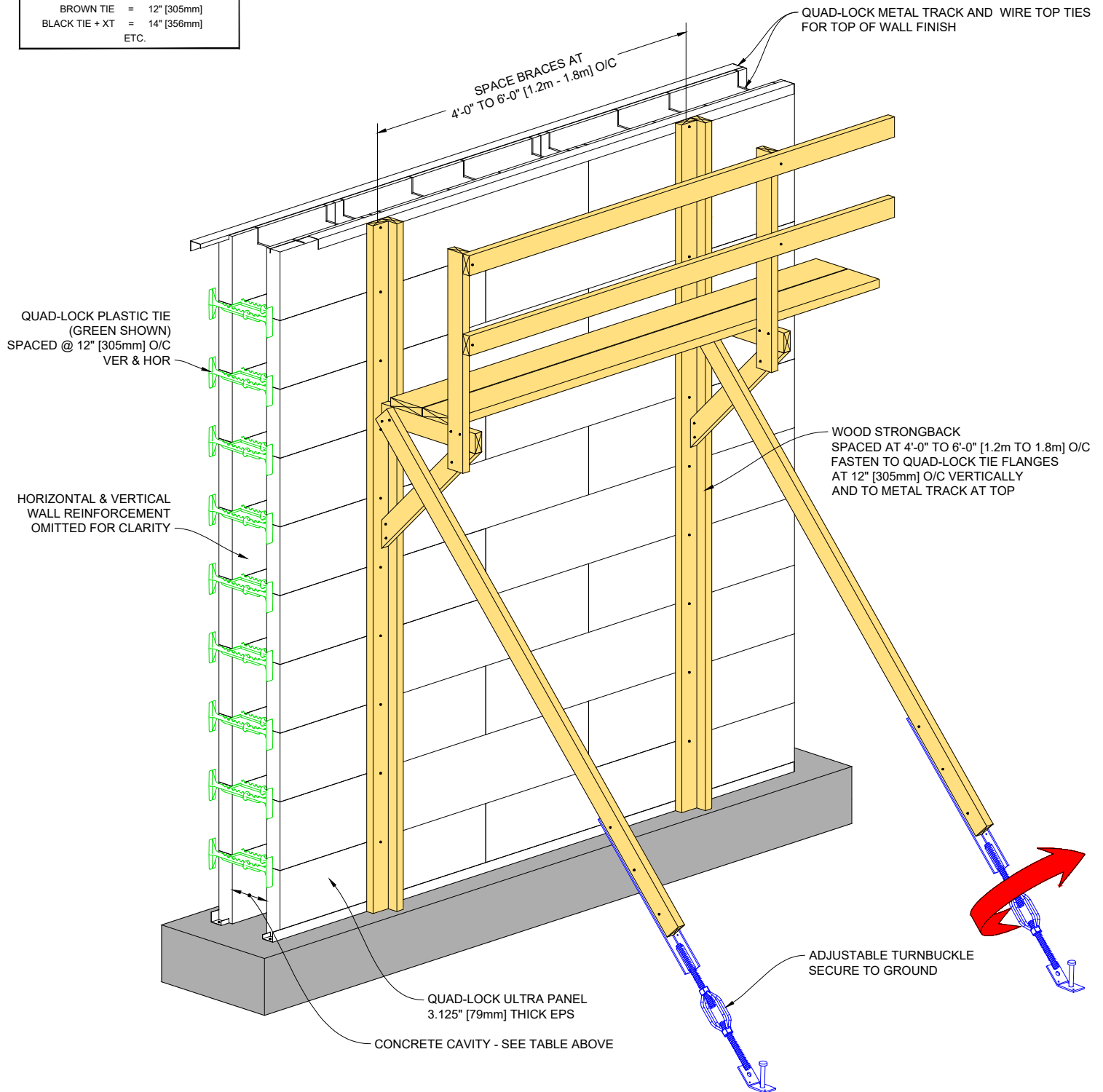
IT IS FURTHER THE RESPONSIBILITY OF THE USER TO RESEARCH AND UNDERSTAND SAFE METHODS OF USE AND HANDLING OF THESE PRODUCTS.

QUAD-LOCK WALL TYPICAL METAL BRACING DETAIL

| | | | |
|----------------|-------------|--------------|----------------------------|
| DATE DRAWN: | 2018-06-01 | SCALE: | NOT TO SCALE |
| REVISION NO.: | N/A | SHEET SIZE: | 8.5" x 11" [216mm x 279mm] |
| REVISION DATE: | YYYY-MM-DD | APPROVED ON: | 2018-06-04 |
| DRAWN BY: | Z. PROSTRAN | APPROVED BY: | G. KUSTERMAN |
| | | | DRAWING NO. QLU-725 |

QUAD-LOCK R-28 [U-0.21] WALL

| TIE NAME | CONCRETE CORE THICKNESS |
|------------------|-------------------------|
| BLUE TIE = | 4" [102mm] |
| YELLOW TIE = | 6" [152mm] |
| GREEN TIE = | 8" [203mm] |
| RED TIE = | 10" [254mm] |
| BROWN TIE = | 12" [305mm] |
| BLACK TIE + XT = | 14" [356mm] |
| ETC. | |



QUAD-LOCK®
Building Systems

Quad-Lock Building Systems
7398 - 132nd Street
Surrey, BC V3W 4M7
Canada
888.711.5625 - Toll Free
604.590.3111
604.590.8412 - fax
www.quadlock.com

IT IS THE RESPONSIBILITY OF THE USER TO COMPLY WITH ALL APPLICABLE REGULATIONS AND BUILDING CODE REQUIREMENTS CONCERNING THE USE OF THESE PRODUCTS.

IT IS FURTHER THE RESPONSIBILITY OF THE USER TO RESEARCH AND UNDERSTAND SAFE METHODS OF USE AND HANDLING OF THESE PRODUCTS.

QUAD-LOCK WALL TYPICAL WOOD BRACING DETAIL

| | | | |
|----------------|-------------|--------------|-------------------------------|
| DATE DRAWN: | 2018-06-01 | SCALE: | NOT TO SCALE |
| REVISION NO: | N/A | SHEET SIZE: | 8.5" x 11" [216mm x 279mm] |
| REVISION DATE: | YYYY-MM-DD | APPROVED ON: | 2018-06-04 |
| DRAWN BY: | Z. PROSTRAN | APPROVED BY: | G. KUSTERMANN |
| | | | DRAWING NO: QLU-726 |