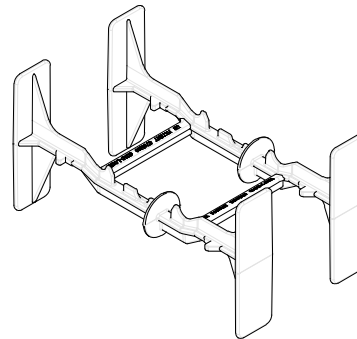
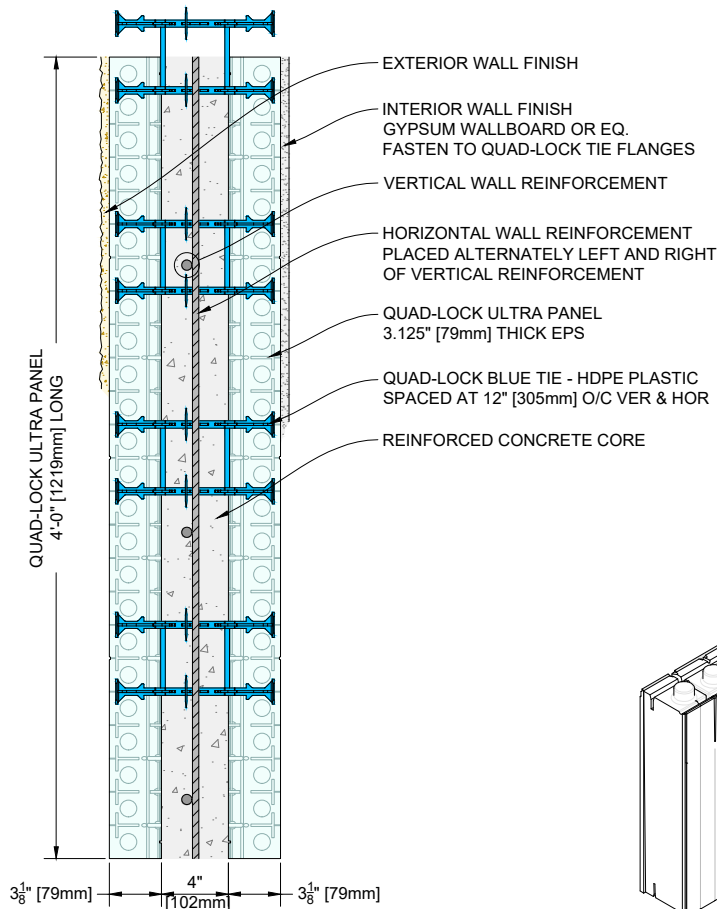


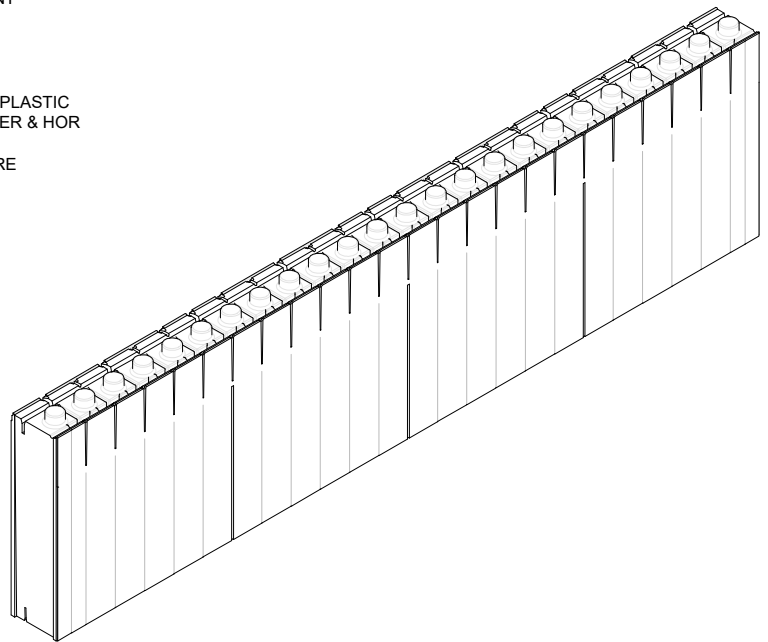
**1 SECTION (FRONT) VIEW**  
R28 [U-0.21] INSULATION WITH 4" [102mm] CONCRETE CORE



**3 QUAD-LOCK BLUE TIE**  
FTB6



**2 PLAN (TOP) VIEW**  
R28 [U-0.21] INSULATION WITH 4" [102mm] CONCRETE CORE



**4 QUAD-LOCK ULTRA PANEL**  
QPX3

**QUAD-LOCK®**  
Building Systems

Quad-Lock Building Systems  
7398 - 132nd Street  
Surrey, BC V3W 4M7  
Canada  
888.711.5625 - Toll Free  
604.590.3111  
604.590.8412 - fax  
www.quadlock.com

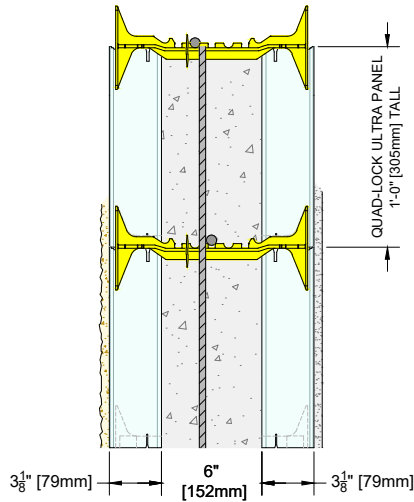
IT IS THE RESPONSIBILITY OF THE USER TO COMPLY WITH ALL APPLICABLE REGULATIONS AND BUILDING CODE REQUIREMENTS CONCERNING THE USE OF THESE PRODUCTS.

IT IS FURTHER THE RESPONSIBILITY OF THE USER TO RESEARCH AND UNDERSTAND SAFE METHODS OF USE AND HANDLING OF THESE PRODUCTS.

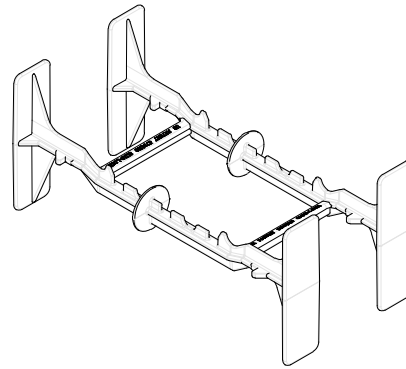
## QUAD-LOCK WALL ASSEMBLY

### R-28 [U-0.21] WITH 4" [102mm] CONCRETE CORE

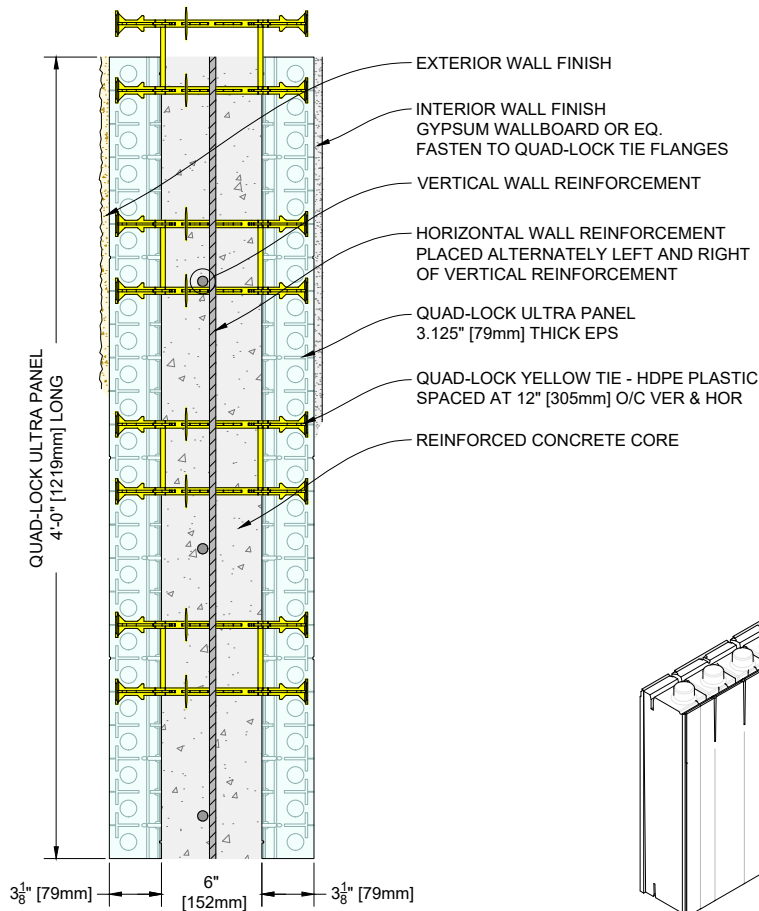
DATE DRAWN:	2018-06-01	SCALE:	NOT TO SCALE
REVISION NO:	N/A	SHEET SIZE:	8.5" x 11" [216mm x 279mm]
REVISION DATE:	YYYY-MM-DD	APPROVED ON:	2018-06-04
DRAWN BY:	Z. PROSTRAN	APPROVED BY:	G. KUSTERMAN
			DRAWING NO: QLU-801



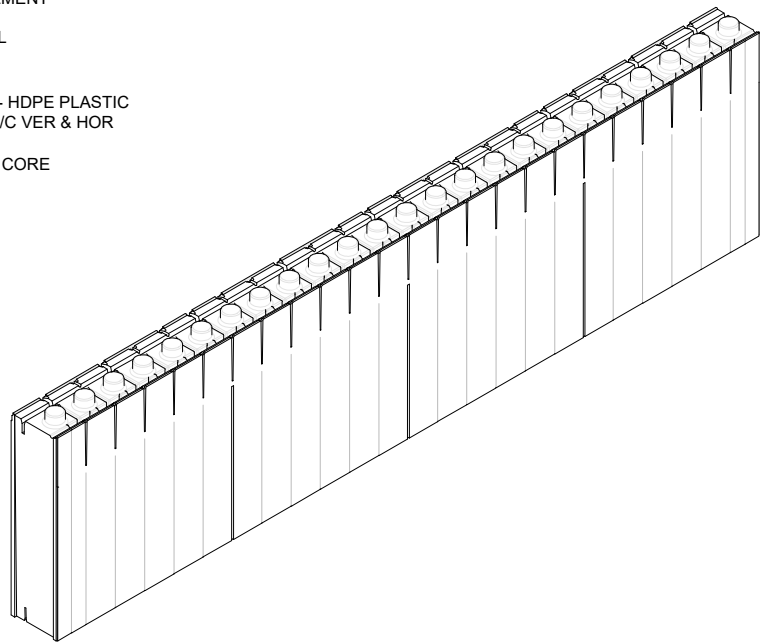
**1 SECTION (FRONT) VIEW**  
R28 [U-0.21] INSULATION WITH 6" [152mm] CONCRETE CORE



**3 QUAD-LOCK YELLOW TIE**  
FTY8



**2 PLAN (TOP) VIEW**  
R28 [U-0.21] INSULATION WITH 6" [152mm] CONCRETE CORE



**4 QUAD-LOCK ULTRA PANEL**  
QPX3

**QUAD-LOCK®**  
Building Systems

Quad-Lock Building Systems  
7398 - 132nd Street  
Surrey, BC V3W 4M7  
Canada  
888.711.5625 - Toll Free  
604.590.3111  
604.590.8412 - fax  
www.quadlock.com

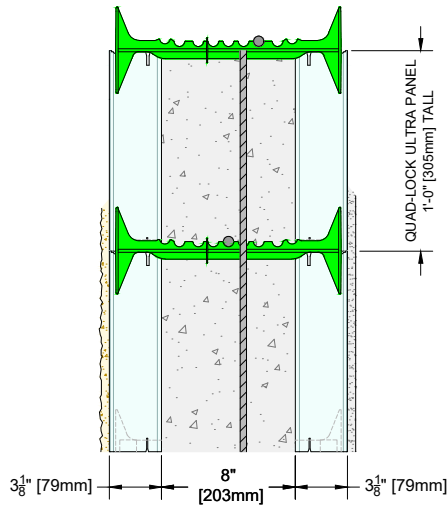
IT IS THE RESPONSIBILITY OF THE USER TO COMPLY WITH ALL APPLICABLE REGULATIONS AND BUILDING CODE REQUIREMENTS CONCERNING THE USE OF THESE PRODUCTS.

IT IS FURTHER THE RESPONSIBILITY OF THE USER TO RESEARCH AND UNDERSTAND SAFE METHODS OF USE AND HANDLING OF THESE PRODUCTS.

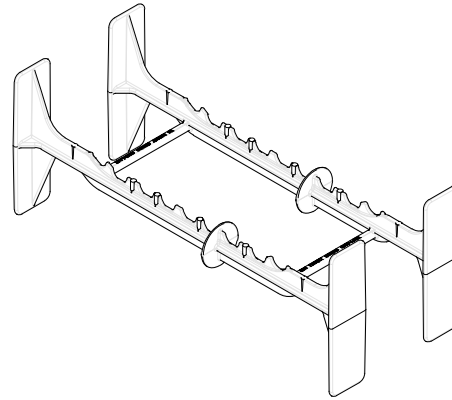
## QUAD-LOCK WALL ASSEMBLY

### R-28 [U-0.21] WITH 6" [152mm] CONCRETE CORE

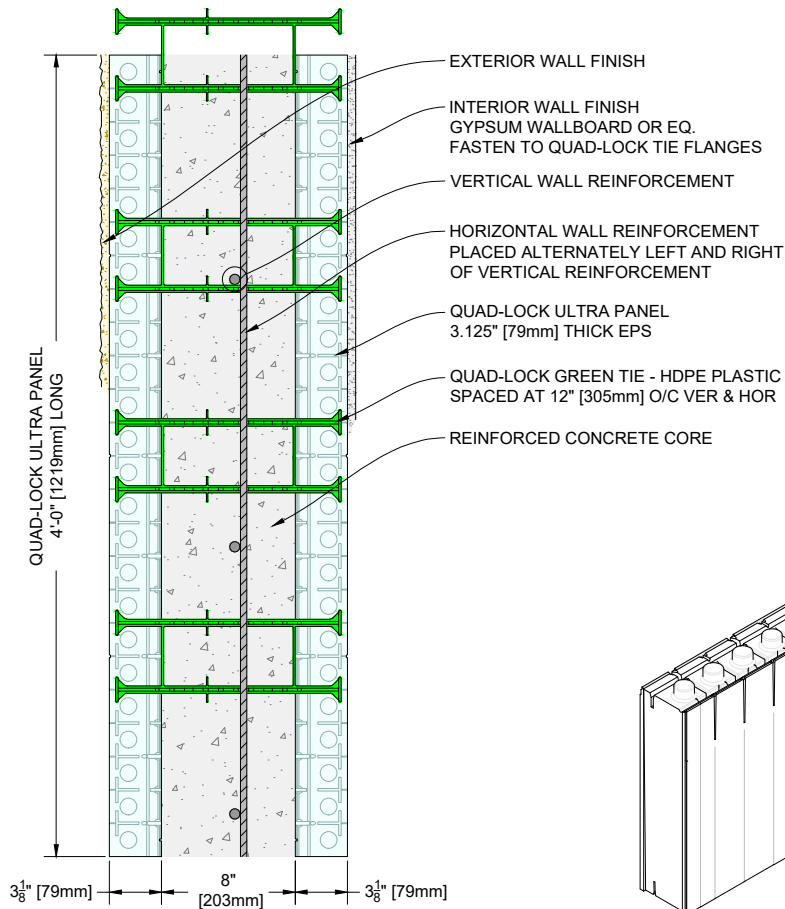
DATE DRAWN:	2018-06-01	SCALE:	NOT TO SCALE
REVISION NO:	N/A	SHEET SIZE:	8.5" x 11" [216mm x 279mm]
REVISION DATE:	YYYY-MM-DD	APPROVED ON:	2018-06-04
DRAWN BY:	Z. PROSTRAN	APPROVED BY:	G. KUSTERMAN
			DRAWING NO: QLU-802



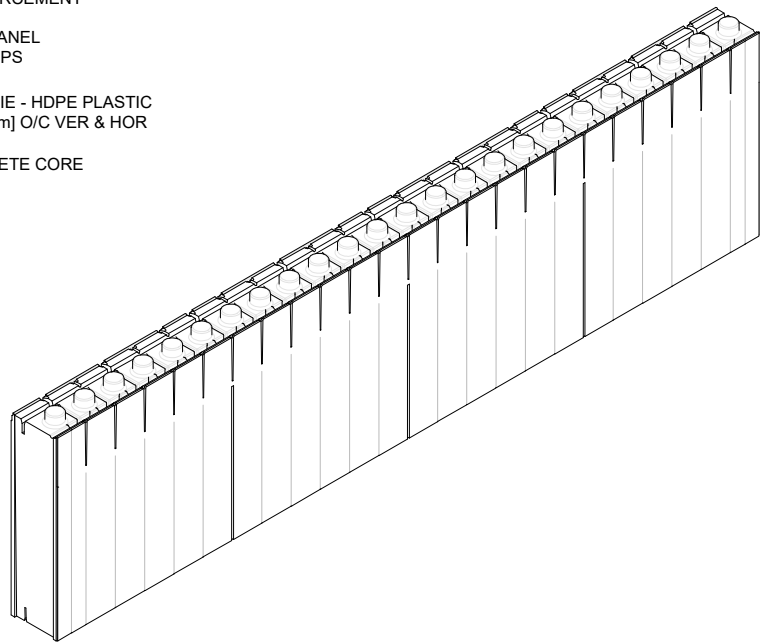
**1 SECTION (FRONT) VIEW**  
R28 [U-0.21] INSULATION WITH 8" [203mm] CONCRETE CORE



**3 QUAD-LOCK GREEN TIE**  
FTG10



**2 PLAN (TOP) VIEW**  
R28 [U-0.21] INSULATION WITH 8" [203mm] CONCRETE CORE



**4 QUAD-LOCK ULTRA PANEL**  
QPX3

**QUAD-LOCK®**  
Building Systems

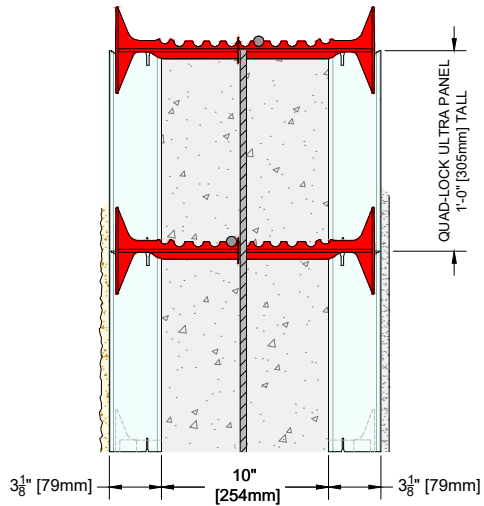
Quad-Lock Building Systems  
7398 - 132nd Street  
Surrey, BC V3W 4M7  
Canada  
888.711.5625 - Toll Free  
604.590.3111  
604.590.8412 - fax  
www.quadlock.com

IT IS THE RESPONSIBILITY OF THE USER TO COMPLY WITH ALL APPLICABLE REGULATIONS AND BUILDING CODE REQUIREMENTS CONCERNING THE USE OF THESE PRODUCTS.

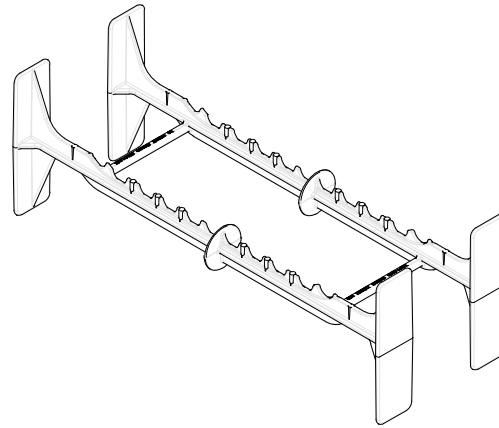
IT IS FURTHER THE RESPONSIBILITY OF THE USER TO RESEARCH AND UNDERSTAND SAFE METHODS OF USE AND HANDLING OF THESE PRODUCTS.

## QUAD-LOCK WALL ASSEMBLY R-28 [U-0.21] WITH 8" [203mm] CONCRETE CORE

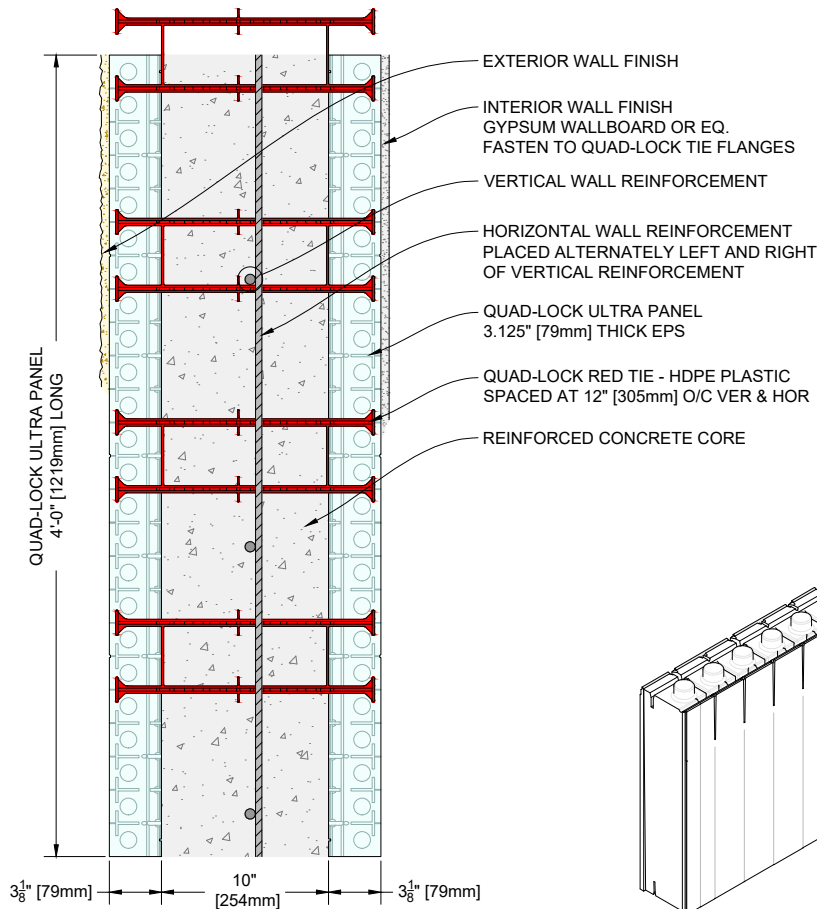
DATE DRAWN:	2018-06-01	SCALE:	NOT TO SCALE
REVISION NO:	N/A	SHEET SIZE:	8.5" x 11" [216mm x 279mm]
REVISION DATE:	YYYY-MM-DD	APPROVED ON:	2018-06-04
DRAWN BY:	Z. PROSTRAN	APPROVED BY:	G. KUSTERMAN
			DRAWING NO: <b>QLU-803</b>



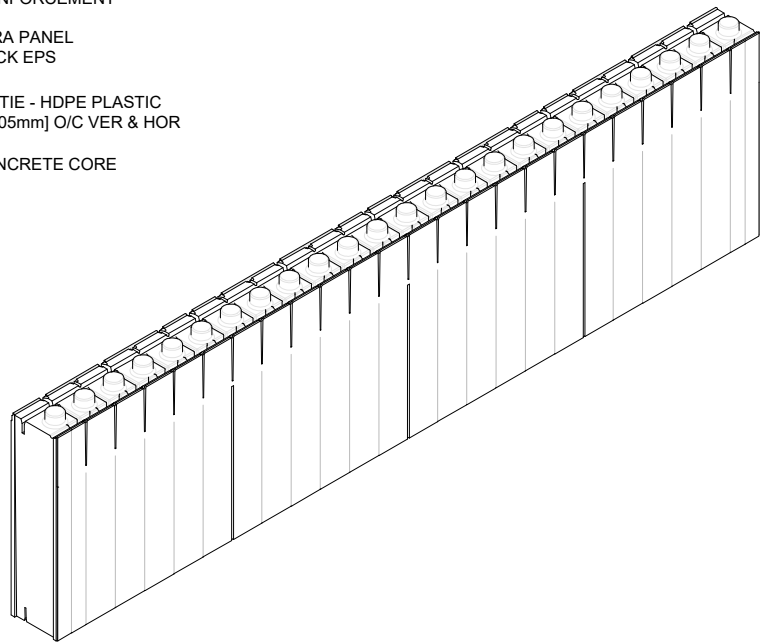
**1 SECTION (FRONT) VIEW**  
R28 [U-0.21] INSULATION WITH 10" [254mm] CONCRETE CORE



**3 QUAD-LOCK RED TIE**  
FTR12



**2 PLAN (TOP) VIEW**  
R28 [U-0.21] INSULATION WITH 10" [254mm] CONCRETE CORE



**4 QUAD-LOCK ULTRA PANEL**  
QPX3

**QUAD-LOCK®**  
Building Systems

Quad-Lock Building Systems  
7398 - 132nd Street  
Surrey, BC V3W 4M7  
Canada  
888.711.5625 - Toll Free  
604.590.3111  
604.590.8412 - fax  
www.quadlock.com

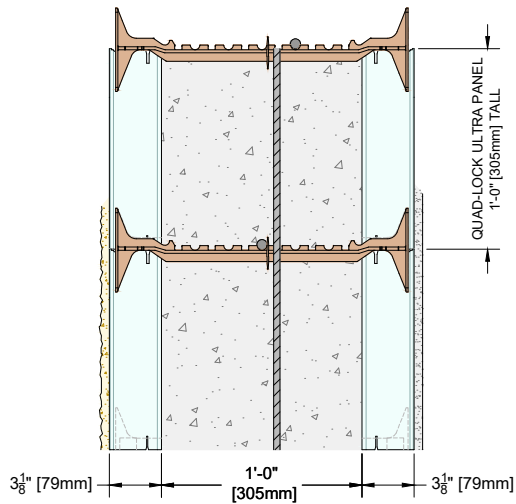
IT IS THE RESPONSIBILITY OF THE USER TO COMPLY WITH ALL APPLICABLE REGULATIONS AND BUILDING CODE REQUIREMENTS CONCERNING THE USE OF THESE PRODUCTS.

IT IS FURTHER THE RESPONSIBILITY OF THE USER TO RESEARCH AND UNDERSTAND SAFE METHODS OF USE AND HANDLING OF THESE PRODUCTS.

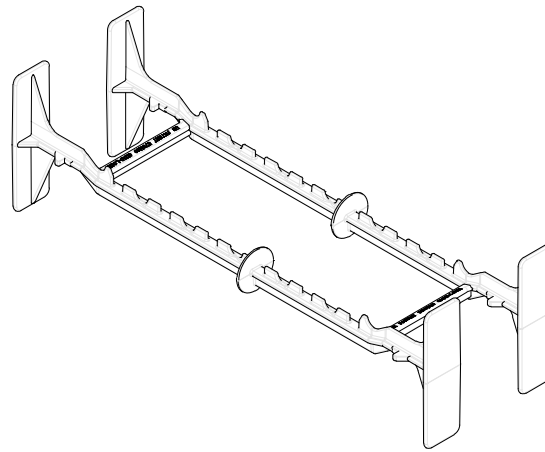
## QUAD-LOCK WALL ASSEMBLY

R-28 [U-0.21] WITH 10" [254mm] CONCRETE CORE

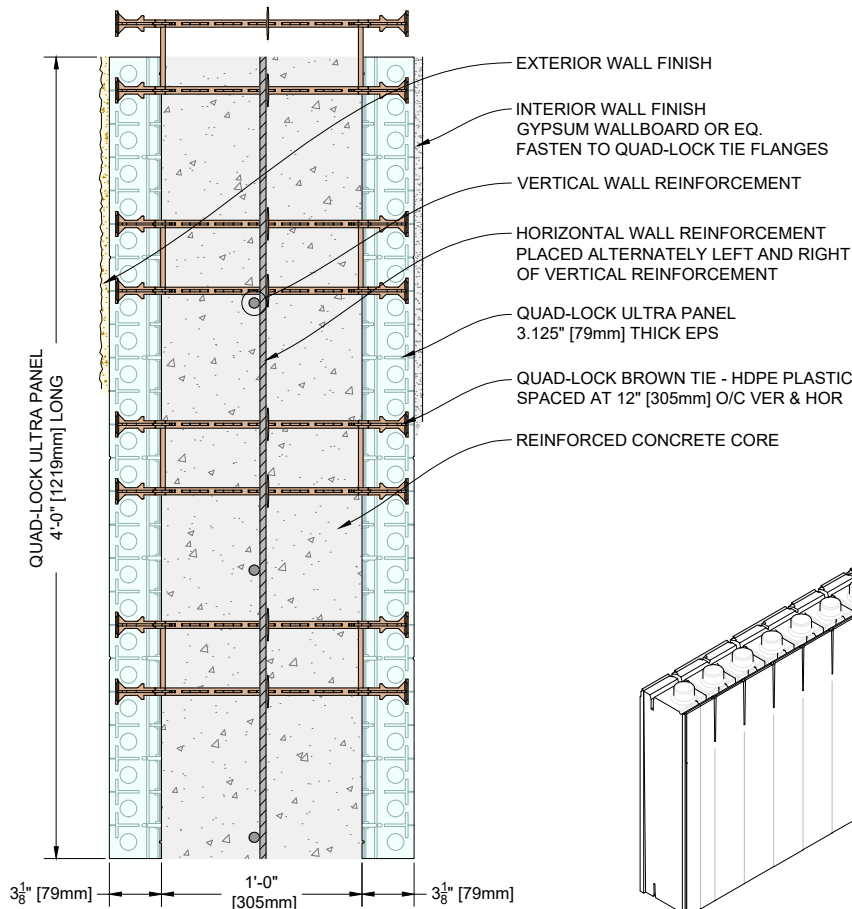
DATE DRAWN:	2018-06-01	SCALE:	NOT TO SCALE
REVISION NO:	N/A	SHEET SIZE:	8.5" x 11" [216mm x 279mm]
REVISION DATE:	YYYY-MM-DD	APPROVED ON:	2018-06-04
DRAWN BY:	Z. PROSTRAN	APPROVED BY:	G. KUSTERMANN
			DRAWING NO: QLU-804



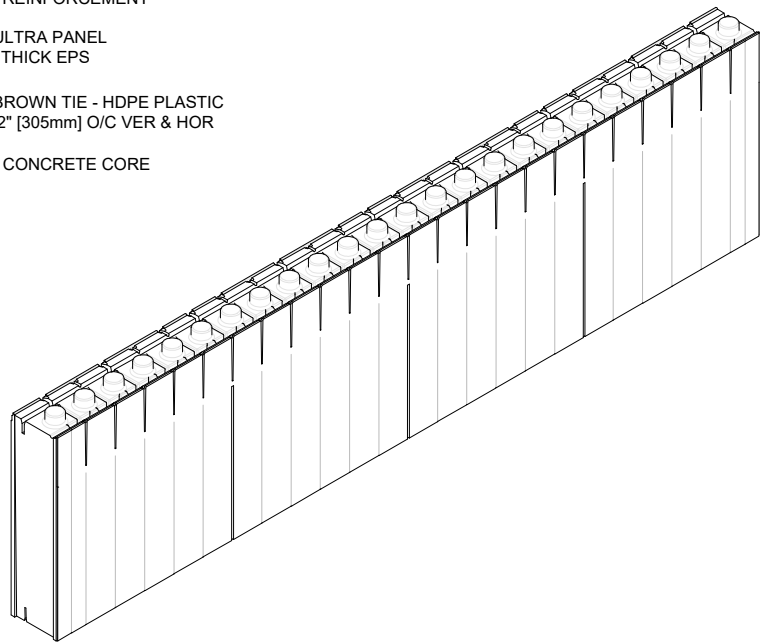
**1 SECTION (FRONT) VIEW**  
R28 [U-0.21] INSULATION WITH 12" [305mm] CONCRETE CORE



**3 QUAD-LOCK BROWN TIE**  
FTB14



**2 PLAN (TOP) VIEW**  
R28 [U-0.21] INSULATION WITH 12" [305mm] CONCRETE CORE



**4 QUAD-LOCK ULTRA PANEL**  
QPX3

**QUAD-LOCK®**  
Building Systems

Quad-Lock Building Systems  
7398 - 132nd Street  
Surrey, BC V3W 4M7  
Canada  
888.711.5625 - Toll Free  
604.590.3111  
604.590.8412 - fax  
www.quadlock.com

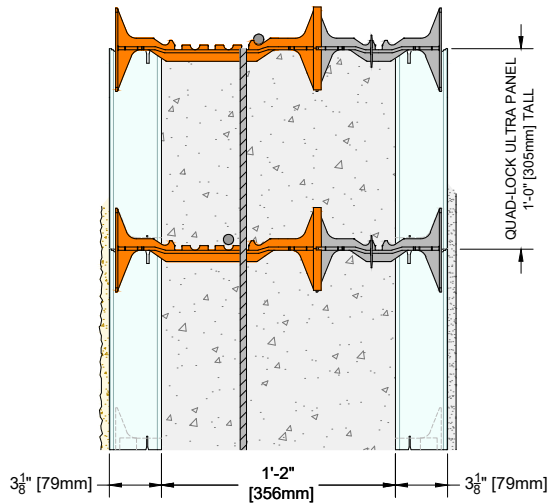
IT IS THE RESPONSIBILITY OF THE USER TO COMPLY WITH ALL APPLICABLE REGULATIONS AND BUILDING CODE REQUIREMENTS CONCERNING THE USE OF THESE PRODUCTS.

IT IS FURTHER THE RESPONSIBILITY OF THE USER TO RESEARCH AND UNDERSTAND SAFE METHODS OF USE AND HANDLING OF THESE PRODUCTS.

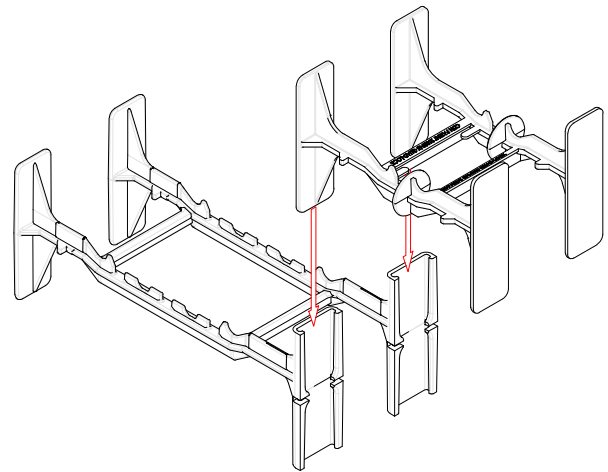
## QUAD-LOCK WALL ASSEMBLY

R-28 [U-0.21] WITH 12" [305mm] CONCRETE CORE

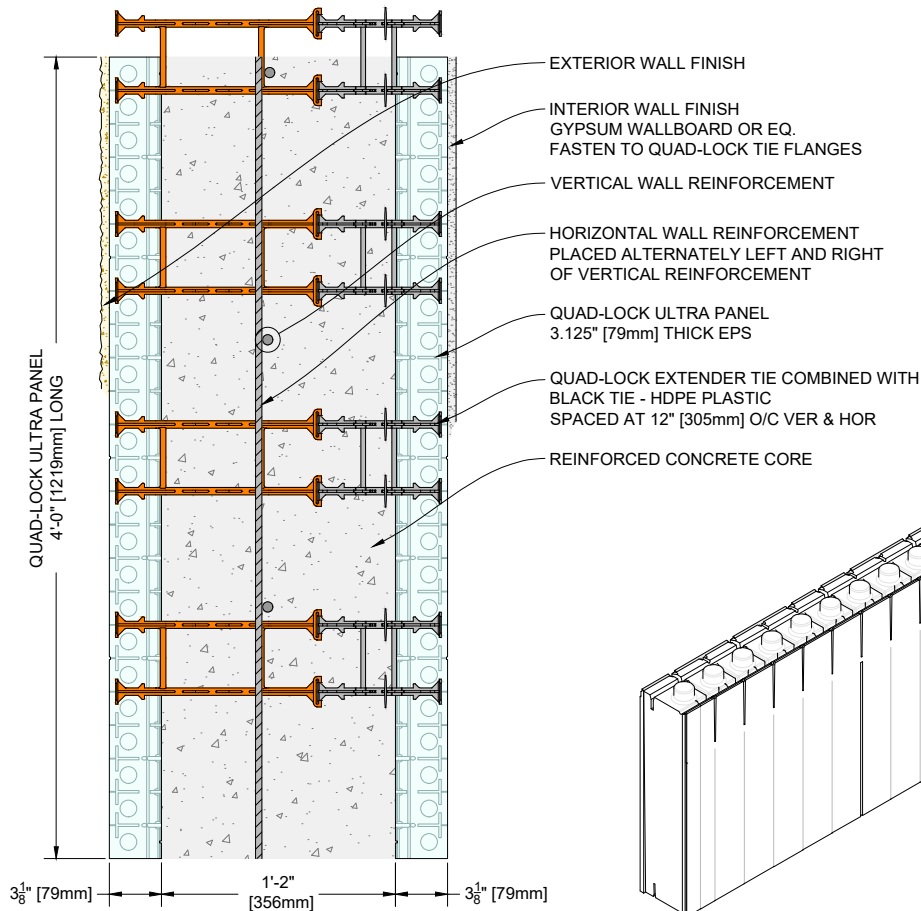
DATE DRAWN:	2018-06-01	SCALE:	NOT TO SCALE
REVISION NO.:	N/A	SHEET SIZE:	8.5" x 11" [216mm x 279mm]
REVISION DATE:	YYYY-MM-DD	APPROVED ON:	2018-06-04
DRAWN BY:	Z. PROSTRAN	APPROVED BY:	G. KUSTERMAN
			DRAWING NO. QLU-805



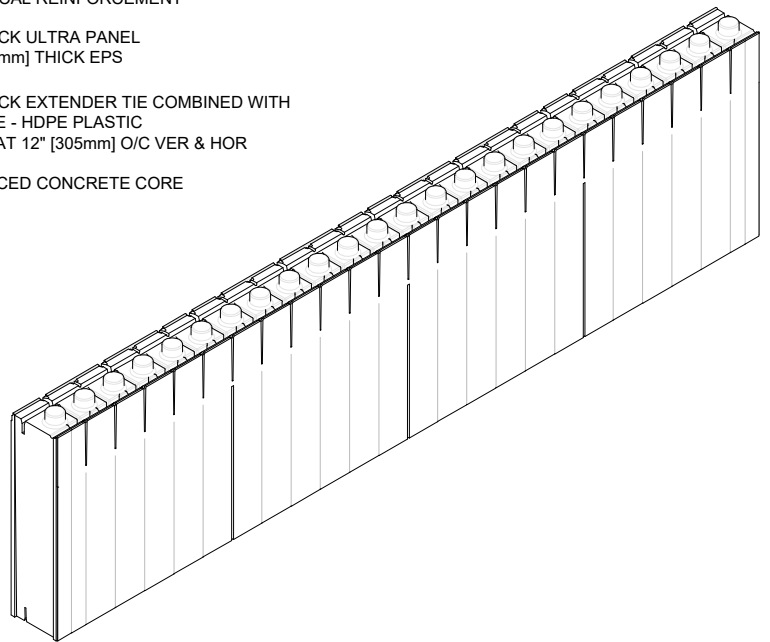
**1 SECTION (FRONT) VIEW**  
R28 [U-0.21] INSULATION WITH 14" [356mm] CONCRETE CORE



**3 QUAD-LOCK EXTENDER TIE & BLACK TIE**  
XT and FTB4



**2 PLAN (TOP) VIEW**  
R28 [U-0.21] INSULATION WITH 14" [356mm] CONCRETE CORE



**4 QUAD-LOCK ULTRA PANEL**  
QPX3

**QUAD-LOCK®**  
Building Systems

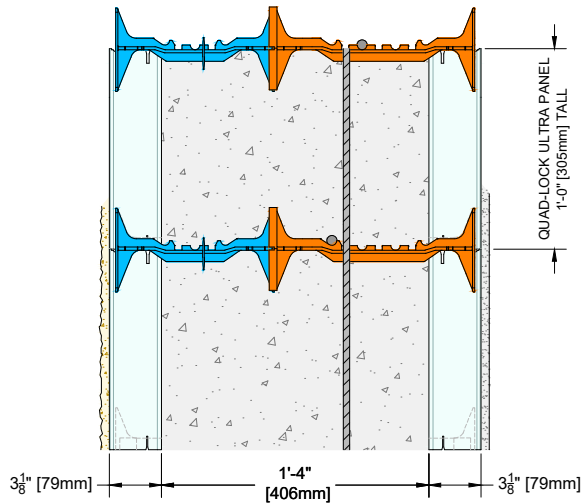
Quad-Lock Building Systems  
7398 - 132nd Street  
Surrey, BC V3W 4M7  
Canada  
888.711.5625 - Toll Free  
604.590.3111  
604.590.8412 - fax  
www.quadlock.com

IT IS THE RESPONSIBILITY OF THE USER TO COMPLY WITH ALL APPLICABLE REGULATIONS AND BUILDING CODE REQUIREMENTS CONCERNING THE USE OF THESE PRODUCTS.  
IT IS FURTHER THE RESPONSIBILITY OF THE USER TO RESEARCH AND UNDERSTAND SAFE METHODS OF USE AND HANDLING OF THESE PRODUCTS.

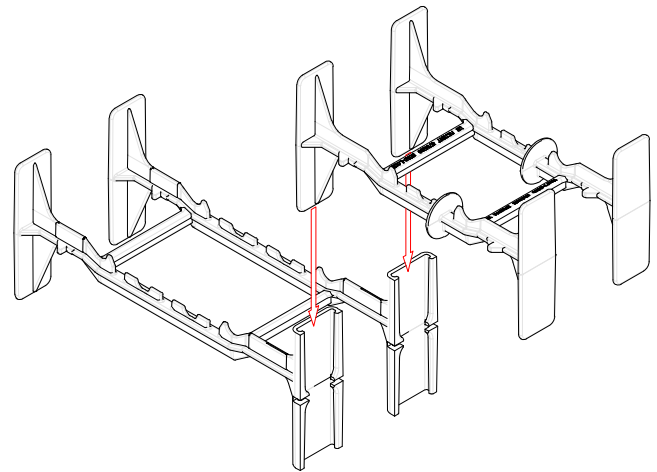
**QUAD-LOCK WALL ASSEMBLY**  
R-28 [U-0.21] WITH 14" [356mm] CONCRETE CORE

DATE DRAWN:	2018-06-01	SCALE:	NOT TO SCALE
REVISION NO:	N/A	SHEET SIZE:	8.5" x 11" [216mm x 279mm]
REVISION DATE:	YYYY-MM-DD	APPROVED ON:	2018-06-04
DRAWN BY:	Z. PROSTRAN	APPROVED BY:	G. KUSTERMAN
			<b>QLU-806</b>

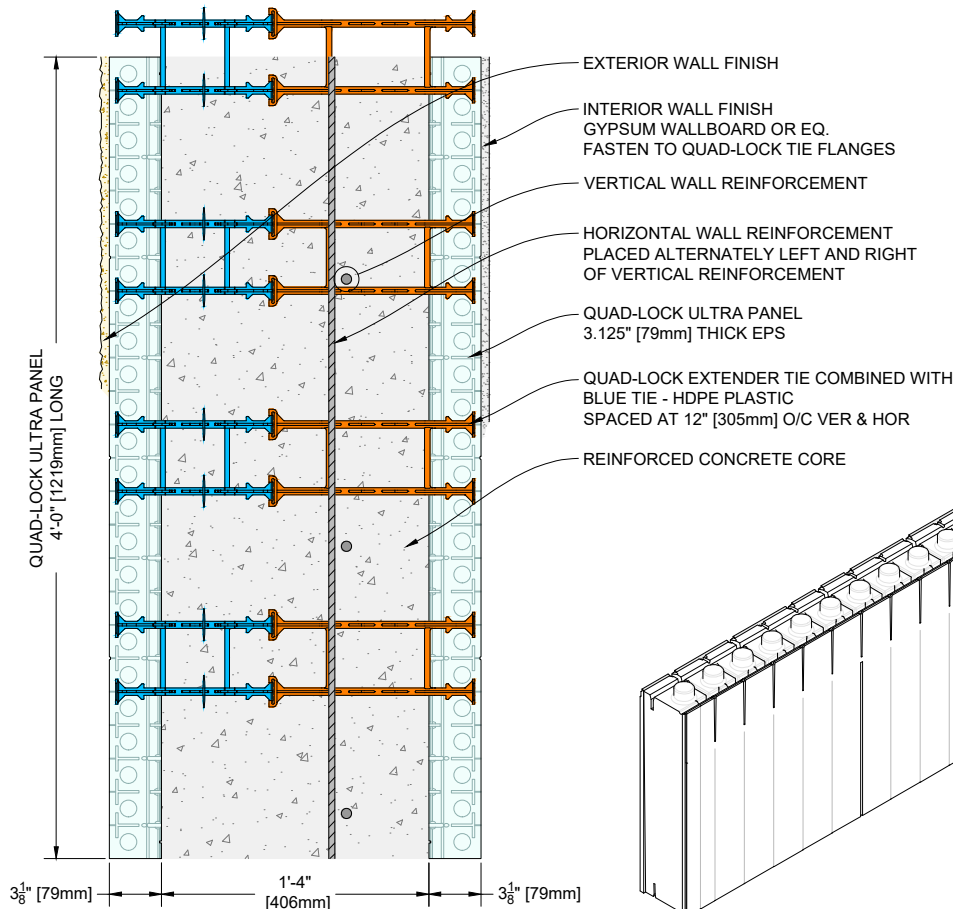




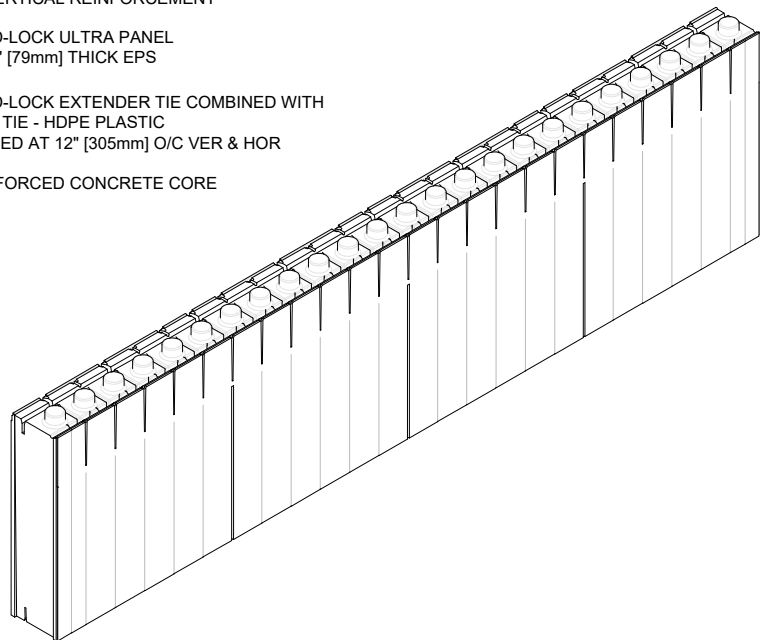
**1 SECTION (FRONT) VIEW**  
R28 [U-0.21] INSULATION WITH 16" [406mm] CONCRETE CORE



**3 QUAD-LOCK EXTENDER TIE & BLUE TIE**  
XT and FTB6



**2 PLAN (TOP) VIEW**  
R28 [U-0.21] INSULATION WITH 16" [406mm] CONCRETE CORE



**4 QUAD-LOCK ULTRA PANEL**  
QPX3

**QUAD-LOCK®**  
Building Systems

Quad-Lock Building Systems  
7398 - 132nd Street  
Surrey, BC V3W 4M7  
Canada  
888.711.5625 - Toll Free  
604.590.3111  
604.590.8412 - fax  
www.quadlock.com

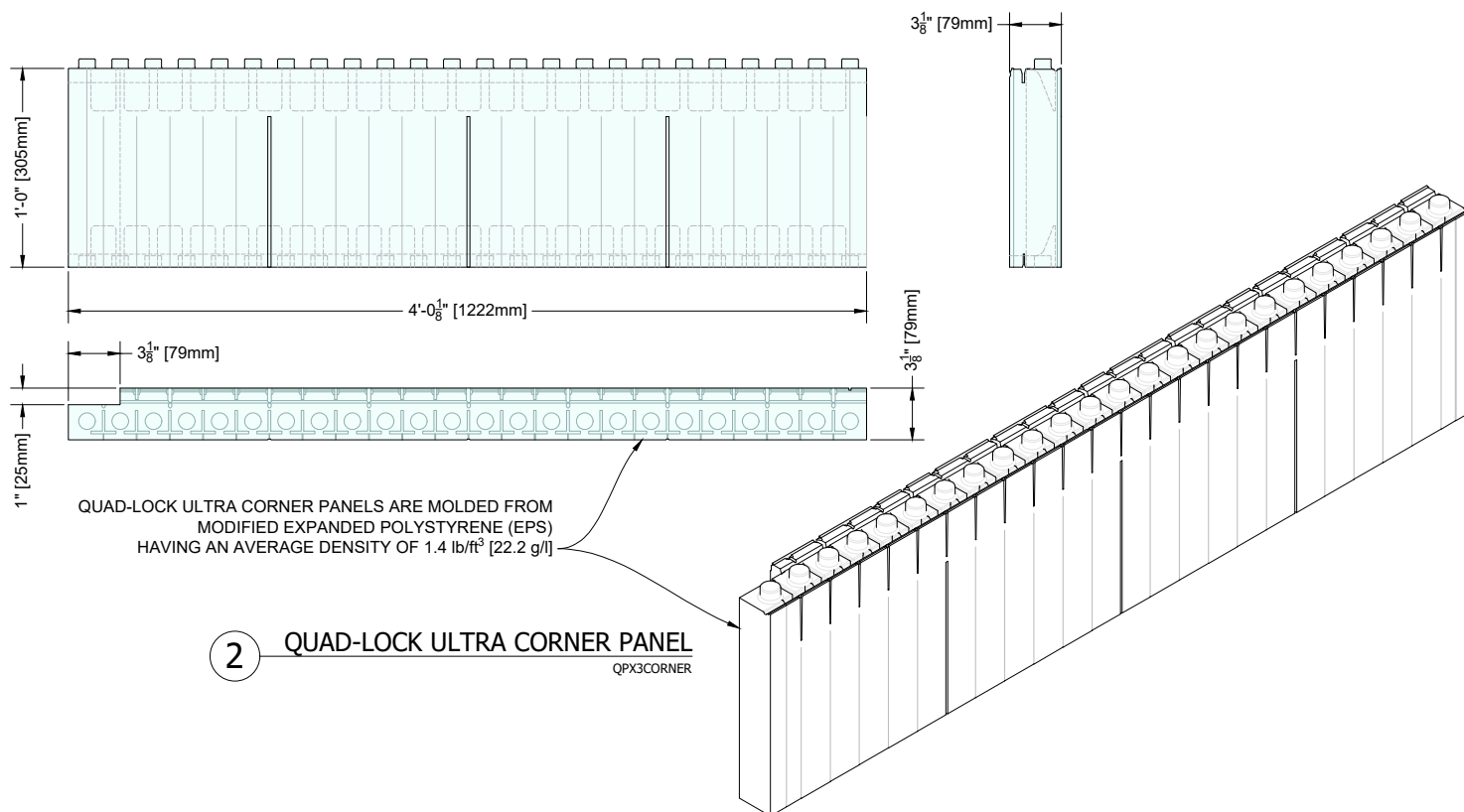
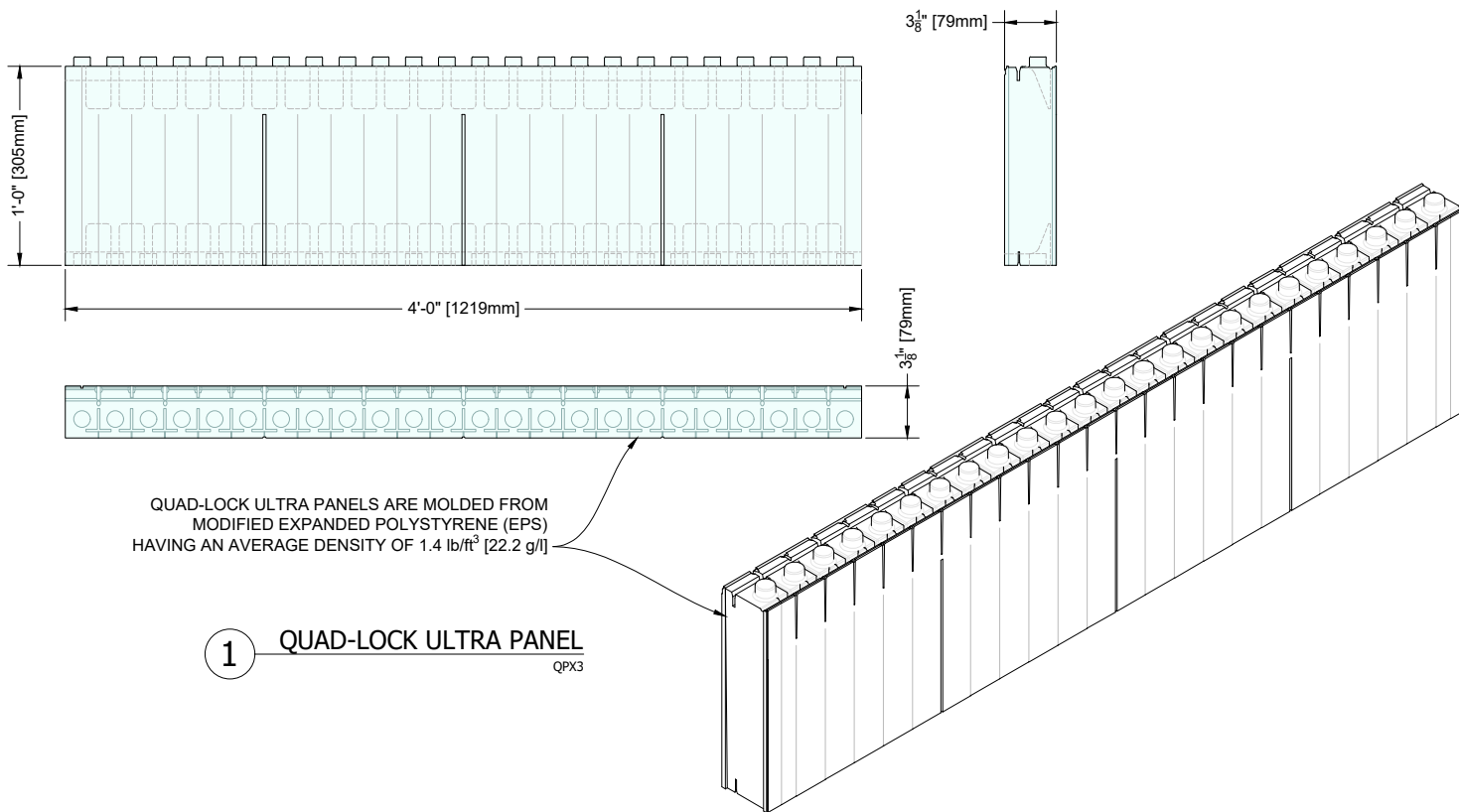
IT IS THE RESPONSIBILITY OF THE USER TO COMPLY WITH ALL APPLICABLE REGULATIONS AND BUILDING CODE REQUIREMENTS CONCERNING THE USE OF THESE PRODUCTS.

IT IS FURTHER THE RESPONSIBILITY OF THE USER TO RESEARCH AND UNDERSTAND SAFE METHODS OF USE AND HANDLING OF THESE PRODUCTS.

## QUAD-LOCK WALL ASSEMBLY

R-28 [U-0.21] WITH 16" [406mm] CONCRETE CORE

DATE DRAWN:	2018-06-01	SCALE:	NOT TO SCALE
REVISION NO:	N/A	SHEET SIZE:	8.5" x 11" [216mm x 279mm]
REVISION DATE:	YYYY-MM-DD	APPROVED ON:	2018-06-04
DRAWN BY:	Z. PROSTRAN	APPROVED BY:	G. KUSTERMANN
			QLU-807



**QUAD-LOCK®**  
Building Systems

Quad-Lock Building Systems  
7398 - 132nd Street  
Surrey, BC V3W 4M7  
Canada  
888.711.5625 - Toll Free  
604.590.3111  
604.590.8412 - fax  
www.quadlock.com

IT IS THE RESPONSIBILITY OF THE USER TO COMPLY WITH ALL APPLICABLE REGULATIONS AND BUILDING CODE REQUIREMENTS CONCERNING THE USE OF THESE PRODUCTS.

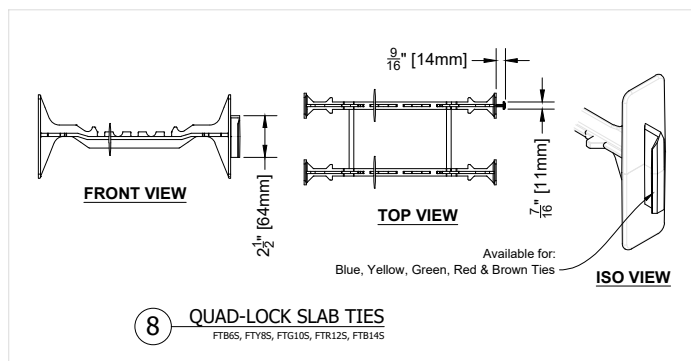
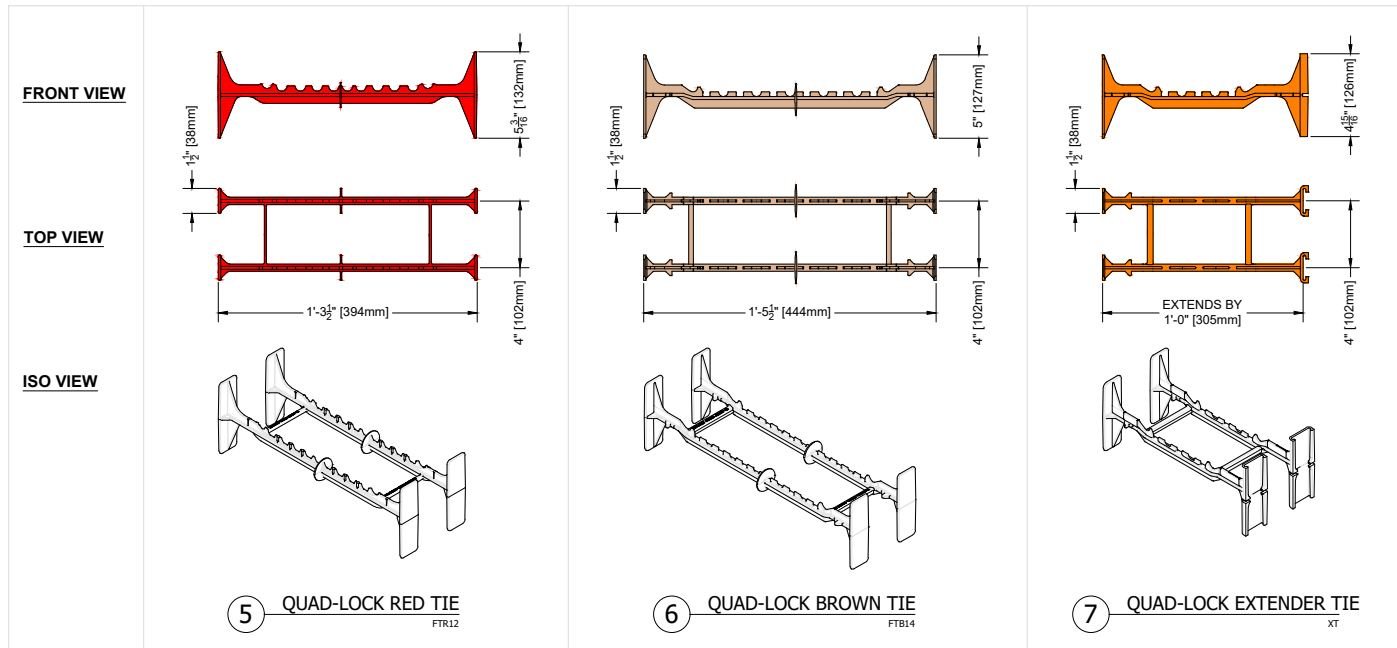
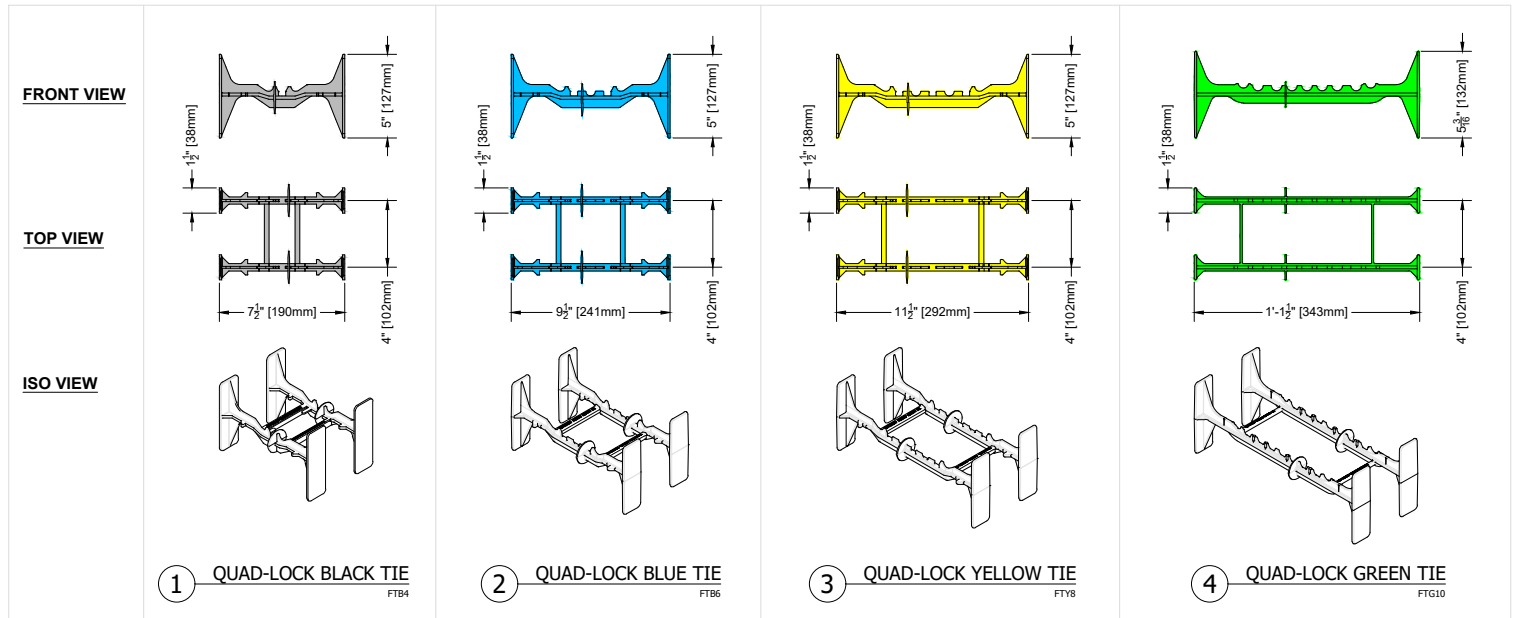
IT IS FURTHER THE RESPONSIBILITY OF THE USER TO RESEARCH AND UNDERSTAND SAFE METHODS OF USE AND HANDLING OF THESE PRODUCTS.

## QUAD-LOCK ULTRA AND ULTRA CORNER PANEL

DATE DRAWN:	2018-06-01	SCALE:	NOT TO SCALE
REVISION NO:	N/A	SHEET SIZE:	8.5" x 11" [216mm x 279mm]
REVISION DATE:	YYYY-MM-DD	APPROVED ON:	2018-06-04
DRAWN BY:	Z. PROSTRAN	APPROVED BY:	G. KUSTERMAN
			DRAWING NO:
			QLU-808



ALL QUAD-LOCK TIES ARE MADE OF HDPE PLASTIC (HIGH DENSITY POLYETHYLENE)



QUAD-LOCK R-28 [U-0.21] WALL		
TIE NAME	CONCRETE CORE THICKNESS	TOTAL QUAD-LOCK WALL THICKNESS (W/O FINISH)
BLUE TIE	4" [102mm]	10.25" [260mm]
YELLOW TIE	6" [152mm]	12.25" [311mm]
GREEN TIE	8" [203mm]	14.25" [362mm]
RED TIE	10" [254mm]	16.25" [413mm]
BROWN TIE	12" [305mm]	18.25" [464mm]
BLACK TIE + XT	14" [356mm]	20.25" [514mm]
BLUE TIE + XT	16" [406mm]	22.25" [565mm]
ETC.		

**QUAD-LOCK®**  
Building Systems

Quad-Lock Building Systems  
7398 - 132nd Street  
Surrey, BC V3W 4M7  
Canada  
888.711.5625 - Toll Free  
604.590.3111  
604.590.8412 - fax  
www.quadlock.com

IT IS THE RESPONSIBILITY OF THE USER TO COMPLY WITH ALL APPLICABLE REGULATIONS AND BUILDING CODE REQUIREMENTS CONCERNING THE USE OF THESE PRODUCTS.

IT IS FURTHER THE RESPONSIBILITY OF THE USER TO RESEARCH AND UNDERSTAND SAFE METHODS OF USE AND HANDLING OF THESE PRODUCTS.

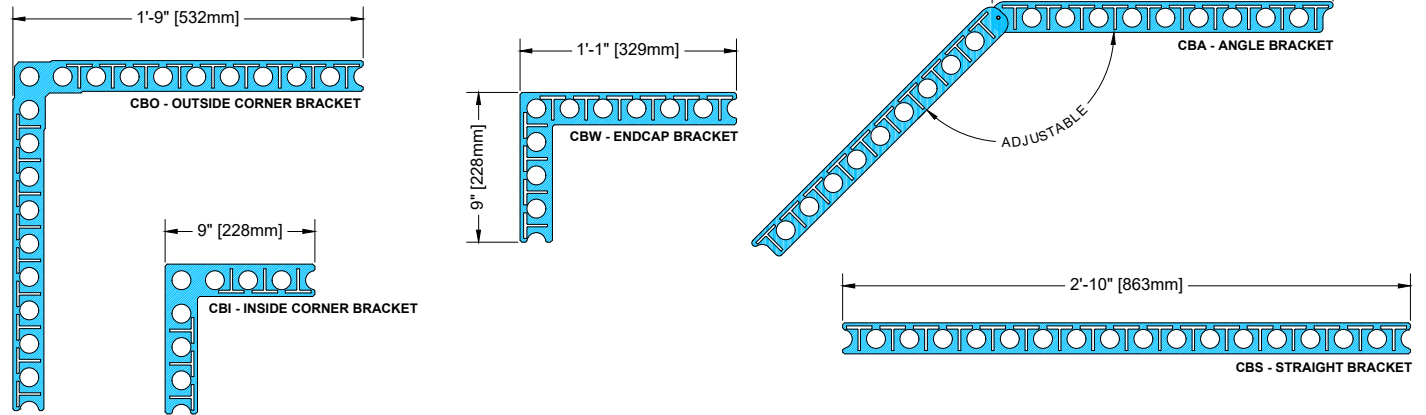
## QUAD-LOCK PLASTIC TIES

DATE DRAWN:	2018-06-01	SCALE:	NOT TO SCALE
REVISION NO.:	N/A	SHEET SIZE:	8.5" x 11" [216mm x 279mm]
REVISION DATE:	YYYY-MM-DD	APPROVED ON:	2018-06-04
DRAWN BY:	Z. PROSTRAN	APPROVED BY:	G. KUSTERMAN
			DRAWING NO. QLU-809

# **ALL QUAD-LOCK CORNER BRACKETS ARE MADE OF GALVANIZED SHEET STEEL**

CBO is 20 gauge; 0.0396" [1.005mm] Thickness.

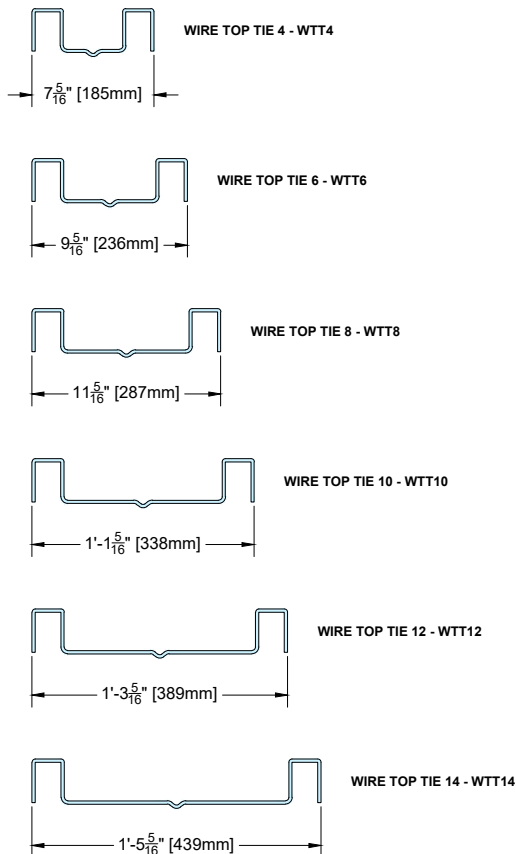
CBI, CBW, CBA and CBS are 22 gauge; Minimum 0.0336" [0.853mm] Thickness.



## **1 QUAD-LOCK CORNER BRACKETS**

CBO, CBI, CBW, CBA, CBS

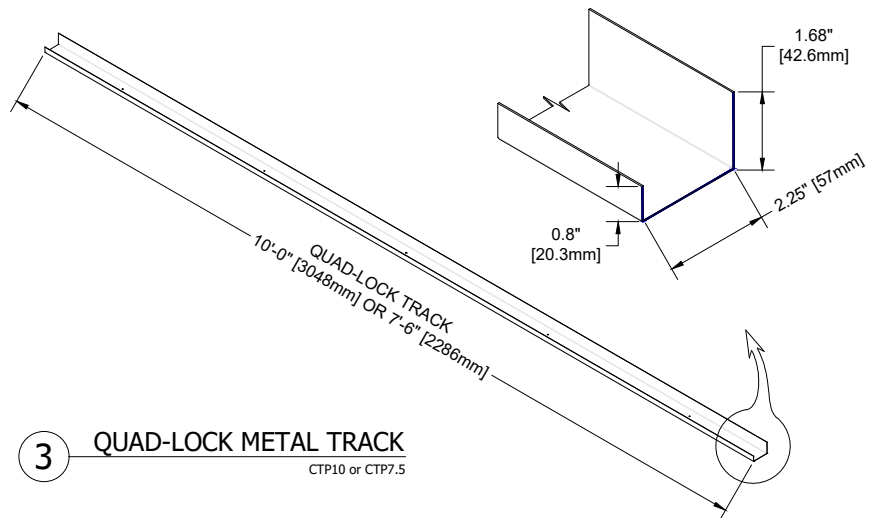
ALL QUAD-LOCK WIRE TOP TIES ARE MADE OF GALVANIZED WIRE 6 GAUGE; 0.192" [4.87mm]



## **2 QUAD-LOCK WIRE TOP TIES**

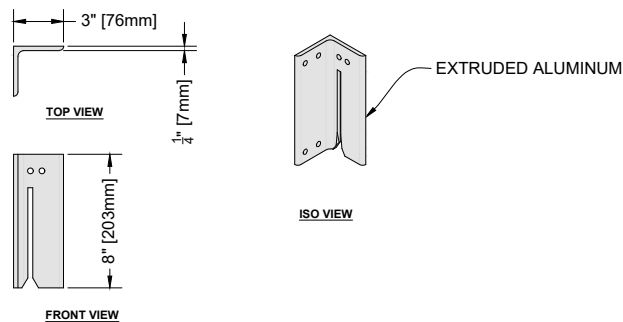
WTT4, WTT6, WTT8, WTT10, WTT12, WTT14

QUAD-LOCK CTP10 AND CTP7.5 TRACKS ARE MADE OF GALVANIZED SHEET STEEL  
20 gauge; 0.0396" [1.005mm] Thickness.



## **3 QUAD-LOCK METAL TRACK**

CTP10 or CTP7.5



## **4 QUAD-LOCK SLAB BRACKET**

SLABBRACKET

**QUAD-LOCK®**  
Building Systems

Quad-Lock Building Systems  
7398 - 132nd Street  
Surrey, BC V3W 4M7  
Canada  
888.711.5625 - Toll Free  
604.590.3111  
604.590.8412 - fax  
www.quadlock.com

IT IS THE RESPONSIBILITY OF THE USER TO COMPLY WITH ALL APPLICABLE REGULATIONS AND BUILDING CODE REQUIREMENTS CONCERNING THE USE OF THESE PRODUCTS.

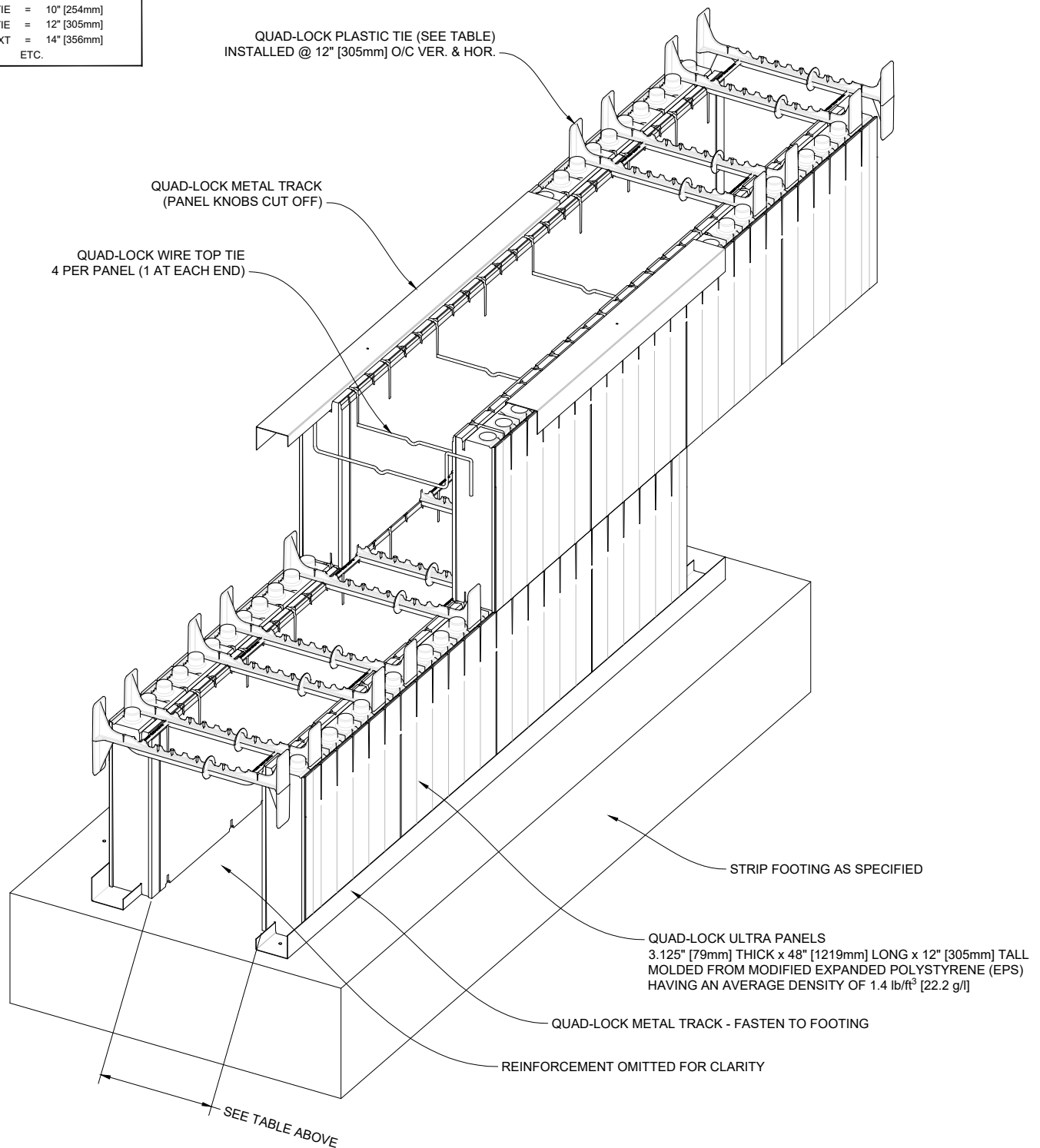
IT IS FURTHER THE RESPONSIBILITY OF THE USER TO RESEARCH AND UNDERSTAND SAFE METHODS OF USE AND HANDLING OF THESE PRODUCTS.

## **QUAD-LOCK METAL COMPONENTS**

DATE DRAWN:	2018-06-01	SCALE:	NOT TO SCALE
REVISION NO:	N/A	SHEET SIZE:	8.5" x 11" [216mm x 279mm]
REVISION DATE:	YYYY-MM-DD	APPROVED ON:	2018-06-04
DRAWN BY:	Z. PROSTRAN	APPROVED BY:	G. KUSTERMANN
			DRAWING NO: QLU-810

**QUAD-LOCK R-28 [U-0.21] WALL**

TIE NAME	CONCRETE CORE THICKNESS
BLUE TIE =	4" [102mm]
YELLOW TIE =	6" [152mm]
GREEN TIE =	8" [203mm]
RED TIE =	10" [254mm]
BROWN TIE =	12" [305mm]
BLACK TIE + XT =	14" [356mm]
ETC.	



**QUAD-LOCK®**  
Building Systems

Quad-Lock Building Systems  
7398 - 132nd Street  
Surrey, BC V3W 4M7  
Canada

888.711.5625 - Toll Free  
604.590.3111  
604.590.8412 - fax  
www.quadlock.com

IT IS THE RESPONSIBILITY OF THE USER TO COMPLY WITH ALL APPLICABLE REGULATIONS AND BUILDING CODE REQUIREMENTS CONCERNING THE USE OF THESE PRODUCTS.

IT IS FURTHER THE RESPONSIBILITY OF THE USER TO RESEARCH AND UNDERSTAND SAFE METHODS OF USE AND HANDLING OF THESE PRODUCTS.

**QUAD-LOCK WALL WITH BASIC COMPONENTS**

DATE DRAWN:	2018-06-01	SCALE:	NOT TO SCALE
REVISION NO:	N/A	SHEET SIZE:	8.5" x 11" [216mm x 279mm]
REVISION DATE:	YYYY-MM-DD	APPROVED ON:	2018-06-04
DRAWN BY:	Z. PROSTRAN	APPROVED BY:	G. KUSTERMANN
			DRAWING NO: <b>QLU-811</b>